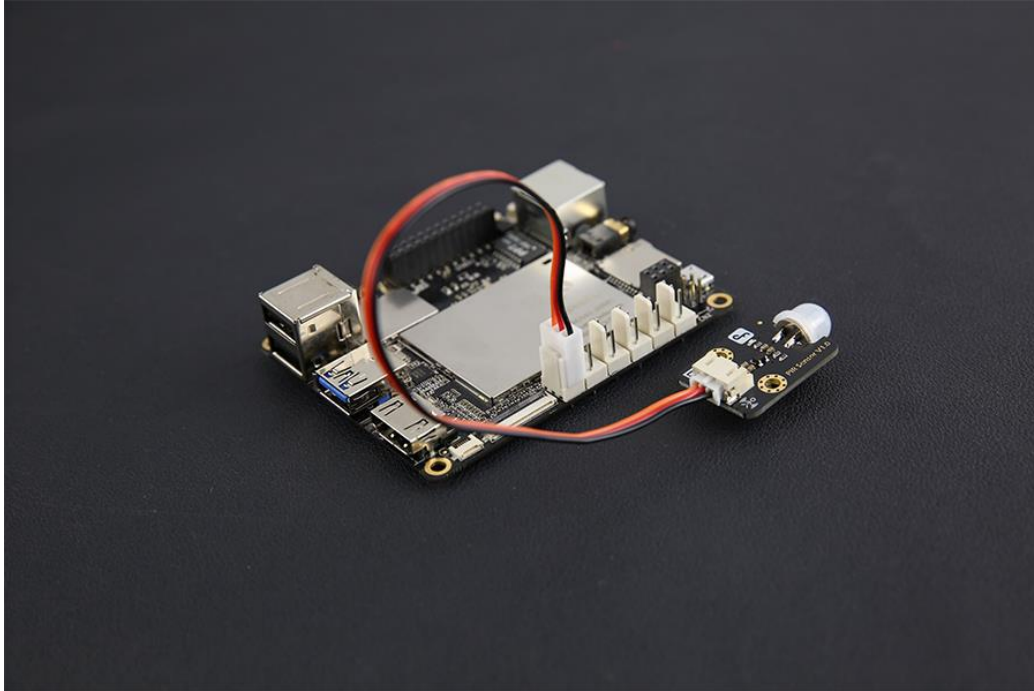


Gravity: Starter Sensor Set for LattePanda V1.0

SKU:KIT0112

If you want to use your LattePanda V1.0 for physical computing, this kit is the perfect choice to get started! You don't need a PhD degree in electronic engineering to use it - it is aimed at tinkerers who like to experiment and play. Every sensor comes with a LattePanda-compatible Gravity interface connector, so no need to worry about compatibility issues!

The LattePanda Starter Sensor Set is a DFRobot Gravity series product. The DFRobot Gravity Series is an open-source, plug and play electronics toolkit for anyone to create anything. With dozens of standardized functional modules and powerful expansion boards, Gravity Series allows users of any skill level to easily connect, mix and develop their own projects that are compatible with Arduino and other microcontroller platforms. [Click here to learn more about this product series.](#)



PIR motion sensor connected with LattePanda

What is LattePanda?

LattePanda is a complete Windows 10 computer on a single board!

It includes everything a regular PC has and can do anything that a regular PC does. It is compatible with almost every gadget you know: printers, joysticks, cameras and more. Any peripherals that work on your PC will work on LattePanda.

LattePanda comes pre-installed with a pre-activated full edition of Windows 10, including powerful tools such as Visual Studio, NodeJS, Java, Processing, and more. Using existing APIs, you can develop your own software and hardware projects on LattePanda as you would on a normal PC - C#, Javascript, Ruby and so on. Say goodbye to your bulky laptop!

Please note LattePanda is not included in the kit.

SPECIFICATION

- Suitable for LattePanda V1.0 (**not compatible with LattePanda Alpha & Delta**)
- Great for experimenting and learning
- Useful for a wide array of projects
- Bundles the most popular DFRobot Sensors

SHIPPING LIST

PIR (Motion) Sensor x 1

https://media.digikey.com/pdf/Data%20Sheets/DFRobot%20PDFs/SEN0171_Web.pdf

Analog Gas Sensor(MQ2) x 1

https://media.digikey.com/pdf/Data%20Sheets/DFRobot%20PDFs/SEN0127_Web.pdf

Analog Flame Sensor x 1

https://media.digikey.com/pdf/Data%20Sheets/DFRobot%20PDFs/DFR0076_Web.pdf

Gravity: Analog LM35 Temperature Sensor For Arduino x 1

https://media.digikey.com/pdf/Data%20Sheets/DFRobot%20PDFs/DFR0023_Web.pdf

Analog Ambient Light Sensor x1

https://media.digikey.com/pdf/Data%20Sheets/DFRobot%20PDFs/SEN0043_Web.pdf

Crash sensor(Left) x 1

https://media.digikey.com/pdf/Data%20Sheets/DFRobot%20PDFs/SEN0138-L_Web.pdf

Crash sensor(Right) x 1

https://media.digikey.com/pdf/Data%20Sheets/DFRobot%20PDFs/SEN0138-R_Web.pdf

Digital Push Button (White) x 1

https://media.digikey.com/pdf/Data%20Sheets/DFRobot%20PDFs/DFR0029-W_Web.pdf

Digital Push Button (Blue) x 1

https://media.digikey.com/pdf/Data%20Sheets/DFRobot%20PDFs/DFR0029-B_Web.pdf

Analog Rotation Sensor V2 x 1

https://media.digikey.com/pdf/Data%20Sheets/DFRobot%20PDFs/DFR0058_Web.pdf

Digital Blue LED Light Module x 1

https://media.digikey.com/pdf/Data%20Sheets/DFRobot%20PDFs/DFR0021-B_Web.pdf

Digital RED LED Light Module x 1

https://media.digikey.com/pdf/Data%20Sheets/DFRobot%20PDFs/DFR0021-R_Web.pdf

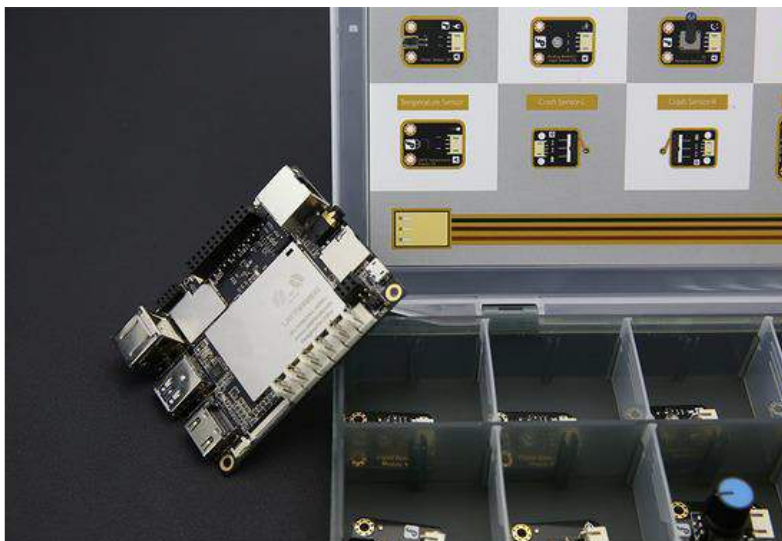
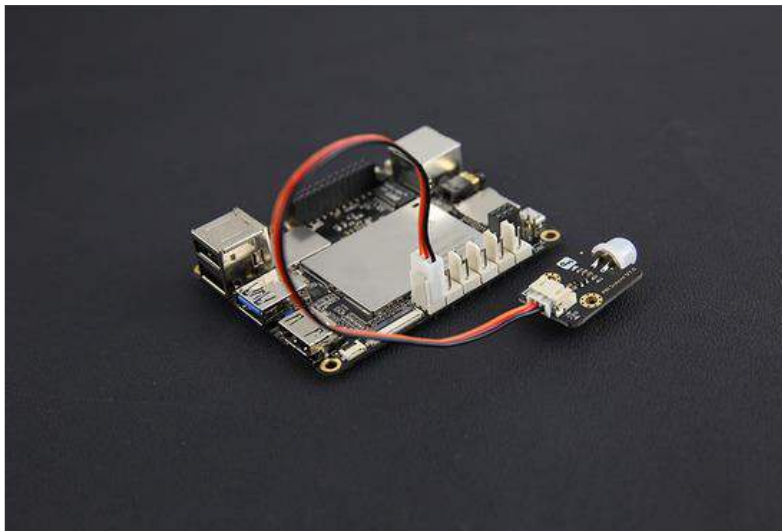
Digital White LED Light Module x 1

https://media.digikey.com/pdf/Data%20Sheets/DFRobot%20PDFs/DFR0021-W_Web.pdf

Relay Module V3.1 (Arduino Compatible) x 1

https://media.digikey.com/pdf/Data%20Sheets/DFRobot%20PDFs/DFR0017_Web.pdf

Gravity Sensor cable x 14



<https://www.dfrobot.com/product-1428.html/10-14-19>