



PUIaudio



Data Sheet

HD-EMB1604-LW26-R

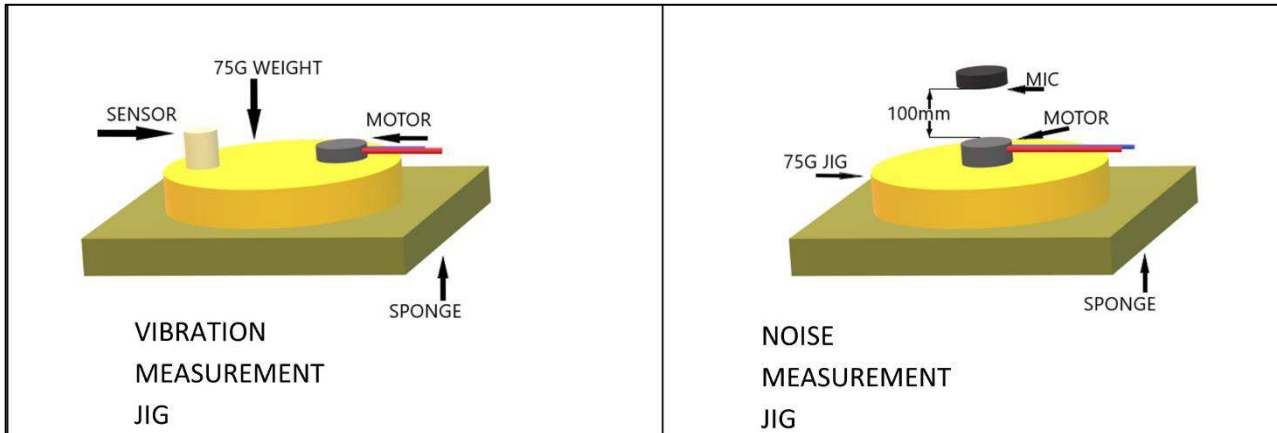
Features:

- Designed to be driven with 1.5 VDC
- 26mm lead wires for easy implementation
- Generates 14,000 RPMs with no more than 50 dBA acoustic noise

Specifications

Parameters	Values	Units
Rated Voltage	1.5	V _{DC}
Starting Voltage	1.2	V _{DC}
Operating Voltage Range	1.2 ~ 1.5	V _{DC}
Direction of Rotation	CW/CCW	-
Terminal Resistance	14 ± 20%	Ohms
Rated Speed (at 3 VDC)	14,000 ± 3,500	RPMs
Rated Current (at 3 VDC)	90	mA
Starting Current (Max)	140	mA
Shaft Pull Strength	3	Kg
Shaft End Play (Max)	0.3	mm
Mechanical Noise (Max)	50	dBA
Housing Material	SPC	-
Environmental Compliances	RoHS/REACH	-
Weight	0.8	Grams
Storage Temperature	-40 ~ +85	°C
Operating Temperature	-20 ~ +60	°C

Measurement Methods

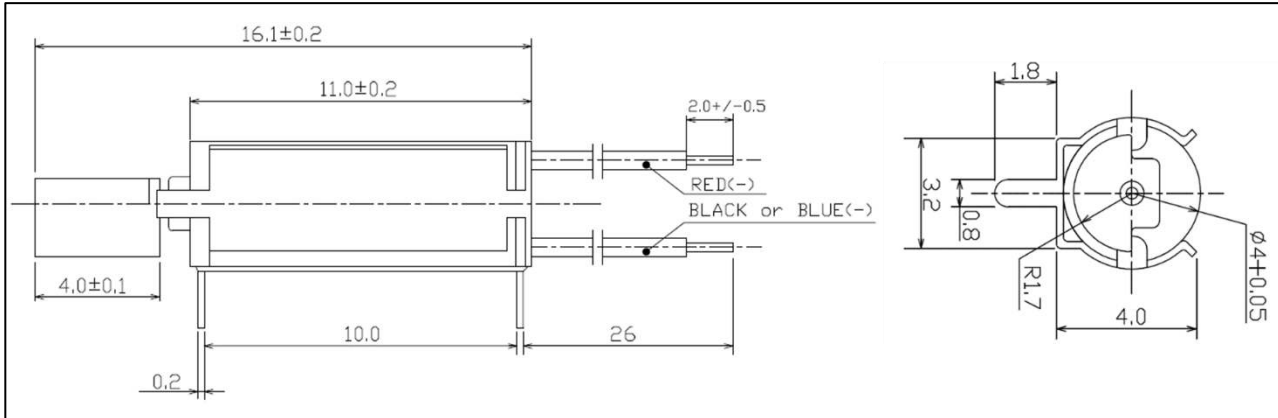


Reliability Testing

Type of Test	Test Specifications
High Temperature Test	Temperature: 85°C Test Duration Time: 96 hours
Low Temperature Test	Temperature: -40°C Test Duration Time: 96 hours
Humidity Test	Temperature: 70°C Room Humidity: 90% Test Duration Time: 96 hours
Temperature Cycle Testing	Run for two cycles with the motor driving for 0.5 seconds on 0.5 seconds off:
Vibration Test	3mm deflection at 1000 cycles per minute, for 10 minutes in each axis (X, Y, Z).
Drop Test	Weight: Set linear vibration motor to ~100g (including linear vibration motor) weight of block. Drop Height: 150cm Floor Material: Steel Test Axis: ±X, ±Y, ±Z; total 6 faces Test Repetition: 2 time per face (12 total)
Load Test	200,000 operating cycles at room temperature Test Cycle: 0.5 seconds on, 0.5 second off

Acceleration, resistance, rated current and noise must meet specifications after allowing the device to rest for 12 hours after test.

Dimensions



Packaging

Item	Tray	Inner Box	Outer Box
DIV.	PET	Carton box	Carton box
Dimension	141(L) x 150(W) x 11(H)	150(L) x 160(W) x 115(H)	330(L) x 330(W) x 270(H)
Quantity	50ea	1,000ea	8,000ea

Specifications Revisions

Revision	Description	Date
A	RELEASED FROM ENGINEERING	04/07/2022

Note:

- Unless otherwise specified:
 - All dimensions are in millimeters.
 - Default tolerances are $\pm 0.5\text{mm}$ and angles are $\pm 3^\circ$.
- Specifications subject to change or withdrawal without notice.