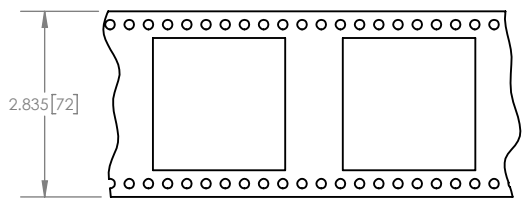
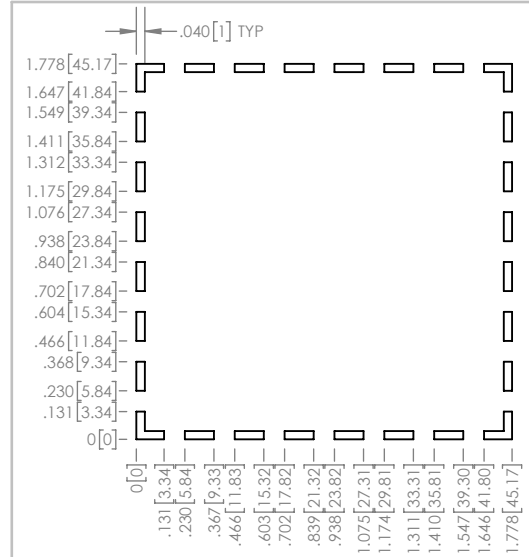
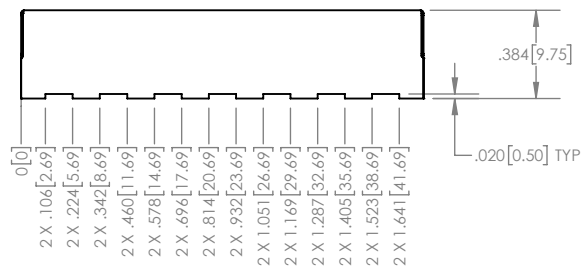
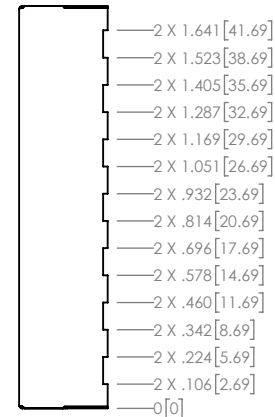
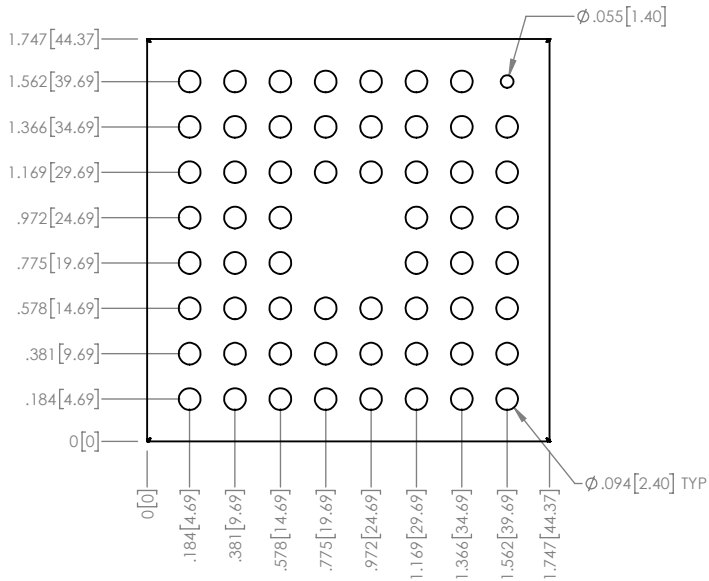
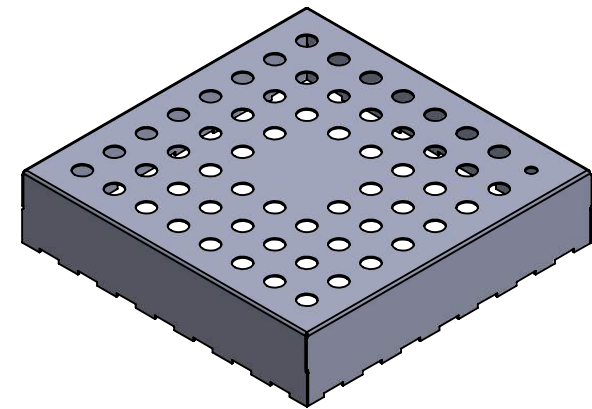


NOTES:

1. MATERIAL: 0.008" TIN PLATED STEEL PER ASTM A623/A624
2. PARTS PER REEL: 80



TAPE AND REEL

PROPRIETARY NOTICE: THESE DRAWINGS, LISTS OR SPECIFICATIONS ARE THE CONFIDENTIAL INFORMATION AND/OR TRADE SECRETS OF 3G SHIELDING SPECIALTIES, INC. AND SHALL REMAIN STRICTLY CONFIDENTIAL EXCEPT AS AUTHORIZED BY 3G SHIELDING SPECIALTIES, INC. IN WRITING. THESE DRAWINGS, LISTS OR SPECIFICATIONS SHALL NOT BE REPRODUCED, RE-TRANSMITTED, USED FOR THE DESIGN, MANUFACTURE OR SALE OF EQUIPMENT OR USED FOR ANY OTHER PURPOSES WITHOUT THE WRITTEN EVALUATION.

UNLESS OTHERWISE SPECIFIED  
U/M INCHES TOLERANCE  $\pm 0.005$

ROHS COMPLIANCE 2011/65/EU

DATE 16-01-26



PART NUMBER	REV.
<b>PIC-S-107</b>	<b>0</b>
DESCRIPTION	SHIELD CAN
SCALE	SHEET
1.2:1	1 OF 1