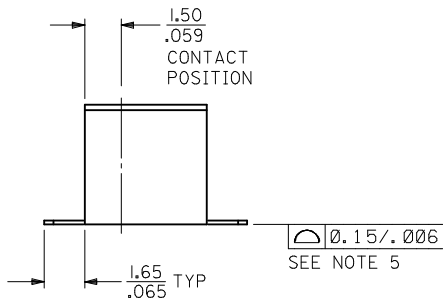
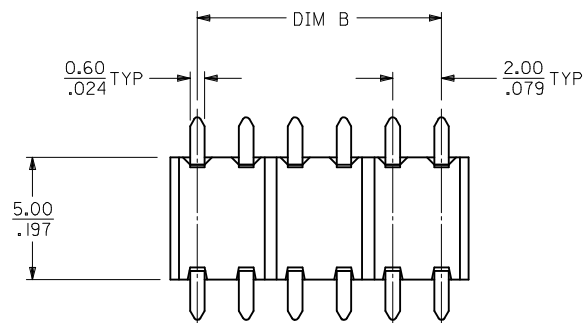
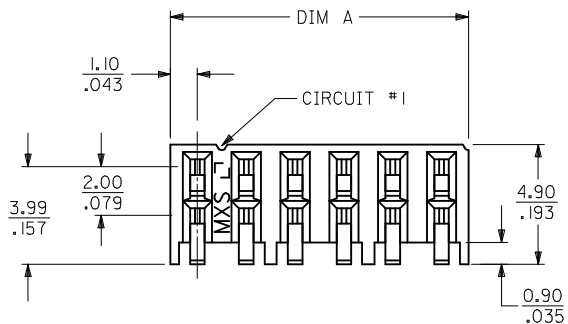
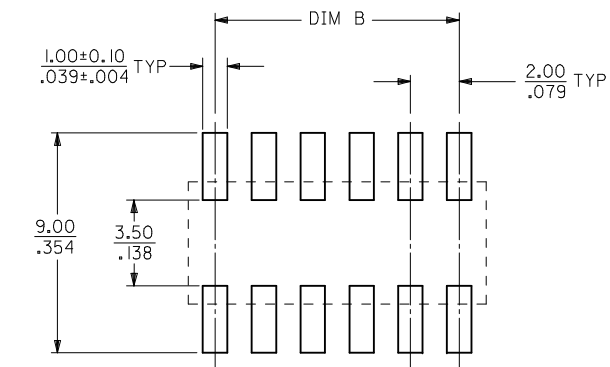


PART NUMBER IN TAPE/REEL	PART NUMBER IN TAPE/REEL	CKT. SIZE	DIM A	DIM B	W	EMBOSSED TYPE
0.76um/30u" GOLD	0.38um/15 u" GOLD					
-	87368-1110	10	10.20/0.402	8.00/0.315	24.00/0.945	A
-	87368-1112	12	12.20/0.480	10.00/0.394	24.00/0.945	A
87368-0320	87368-1120	20	20.20/0.795	18.00/0.709	32.00/1.260	B
-	87368-1140	40	40.20/1.583	38.00/1.496	56.00/2.205	C
-	87368-1150	50	50.20/1.976	48.00/1.890	72.00/2.835	B



NOTE:

- MATERIAL: HOUSING - NYLON, GLASS FILLED, UL94V-0
COLOR: BLACK
TERMINAL - PHOSPHOR BRONZE
- FINISHES: TERMINAL - SELECTIVE GOLD IN THE CONTACT AREA:
THICKNESS = SEE TABLE
2.54um/100Mn MIN. SELECTIVE TIN
IN THE PC SOLDER TAIL AREA
BOTH OVER 1.27um/50Mn MIN. NICKEL OVERALL
- PRODUCT SPECIFICATION: PS-87264
- CIRCUIT SIZE 12 IS SHOWN FOR ILLUSTRATION ONLY, SEE CHART FOR AVAILABLE CIRCUIT SIZES.
- COPLANARITY OF SOLDER TAIL IS TO BE MEASURED BY RESTING THE PART ON A FLAT GAUGE SURFACE.
- PART MATEABLE TO ALL MILLI-GRID HEADERS WITH MATING PIN LENGTH BETWEEN 2.50mm AND 4.20mm.
- PART IS PACK IN TAPE AND REEL.
- PARTS SHALL BE PACKED IN MOISTURE BARRIER BAG.



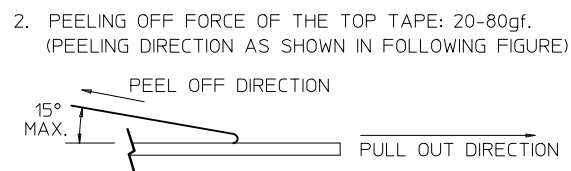
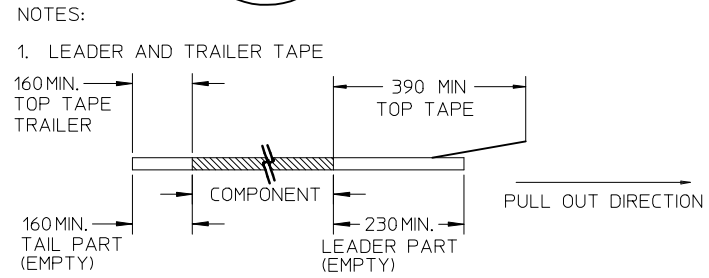
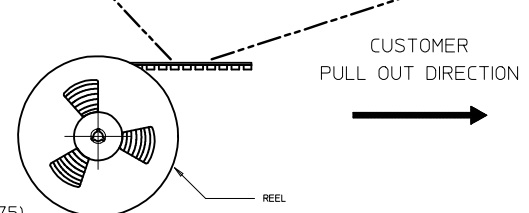
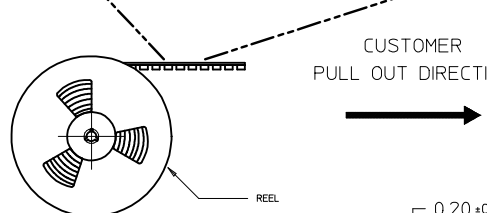
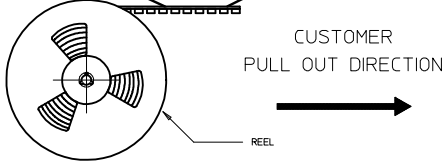
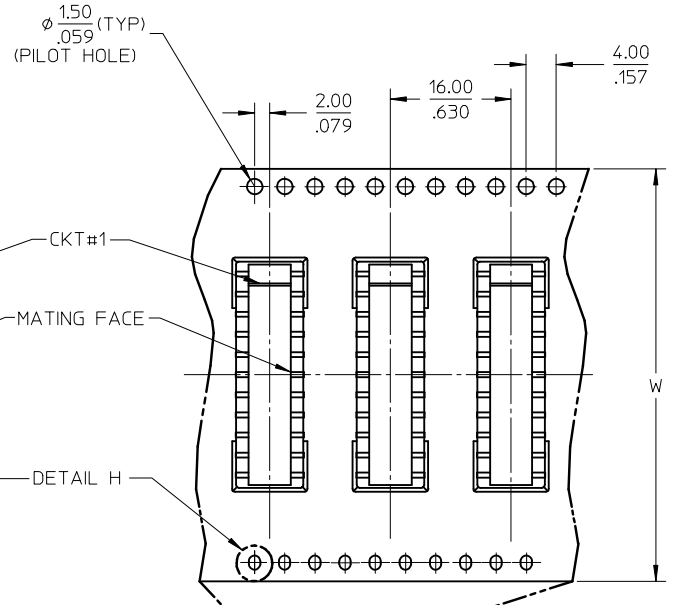
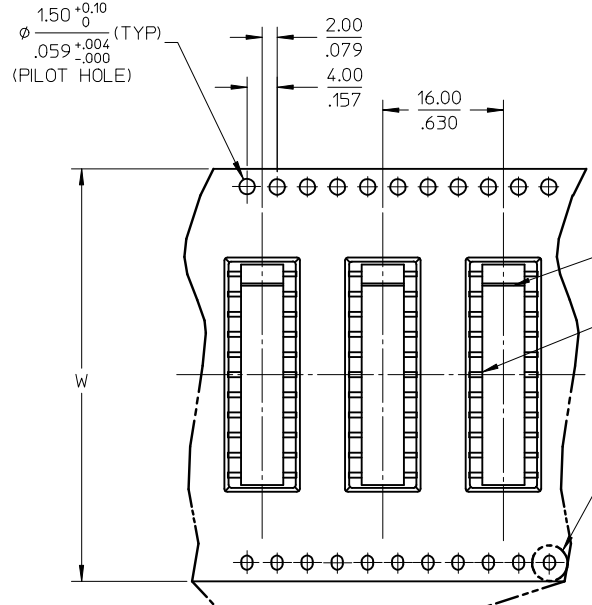
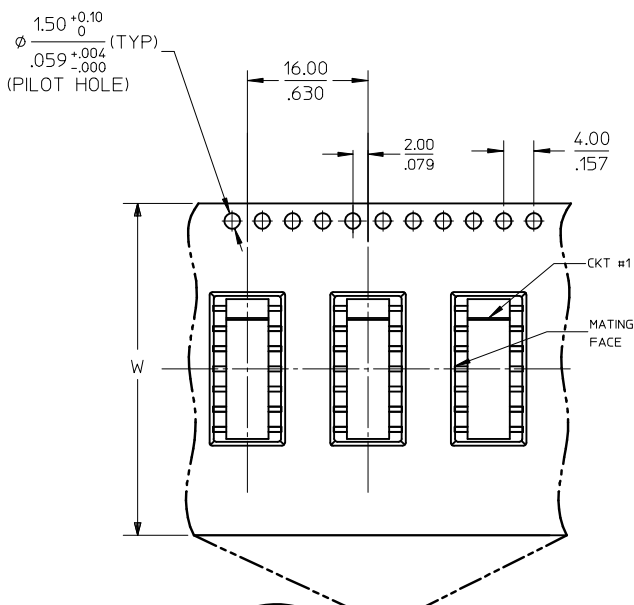
RECOMMENDED PC BOARD LAYOUT

CORRECT PILOT HOLES LOCATION EC NO: S2010-0008 DRWN:SKANG 2009/07/14 CHKD:ATSEE 2009/07/14 APPR:MLONG 2009/07/17	QUALITY SYMBOLS ▽=0 ∇=0	GENERAL TOLERANCES (UNLESS SPECIFIED)		DIMENSION STYLE MM/IN		SCALE NTS	DESIGN UNITS METRIC	THIRD ANGLE PROJECTION		
			mm	INCH	DRAWN BY JSGOH	DATE 1999/02/12	TITLE MGRID SIDE ENTRY RECEPTACLE SMT			
		4 PLACES	± ---	± ---	CHECKED BY LCHANG	DATE 1999/06/10	MATERIAL NO. SD-87368-001			
		3 PLACES	± ---	± .008	APPROVED BY JLIM	DATE 1999/06/17	DOCUMENT NO. SD-87368-001			
		2 PLACES	± 0.20	± ---	DRAFT WHERE APPLICABLE MUST REMAIN WITHIN DIMENSIONS		SIZE A3		SHEET NO. 1 OF 2	
		1 PLACE	± ---	± ---	THIS DRAWING CONTAINS INFORMATION THAT IS PROPRIETARY TO MOLEX INCORPORATED AND SHOULD NOT BE USED WITHOUT WRITTEN PERMISSION					
		ANGULAR ± 3 °								

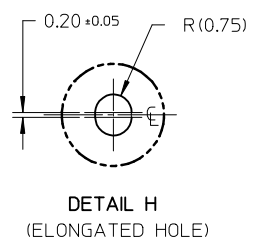
EMBOSSED TYPE A

EMBOSSED TYPE B

EMBOSSED TYPE C

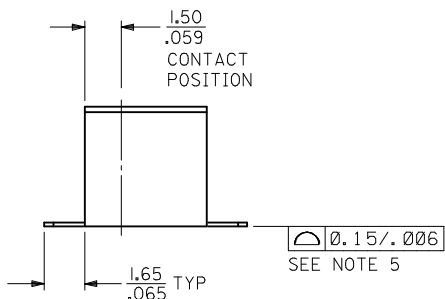
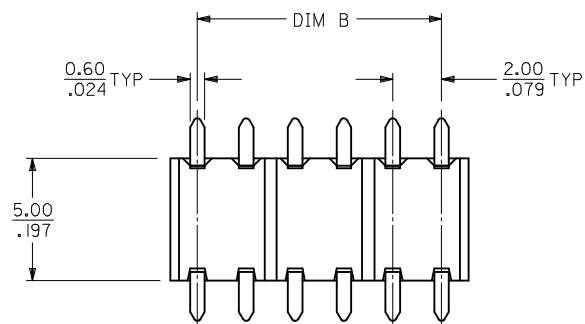
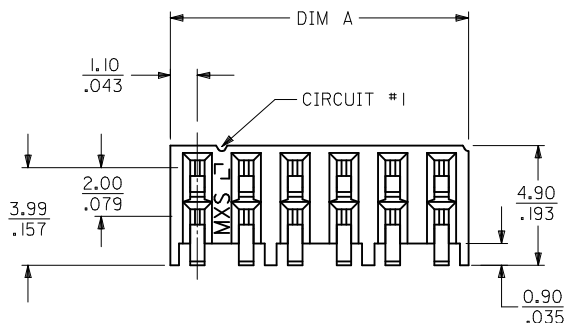


- 1. LEADER AND TRAILER TAPE
- 2. PEELING OFF FORCE OF THE TOP TAPE: 20-80gf. (PEELING DIRECTION AS SHOWN IN FOLLOWING FIGURE)
- 3. PACKAGING STANDARD IS AS PER EIA-481.
- 4. TAPE & REEL QUANTITY = 750PCS/REEL



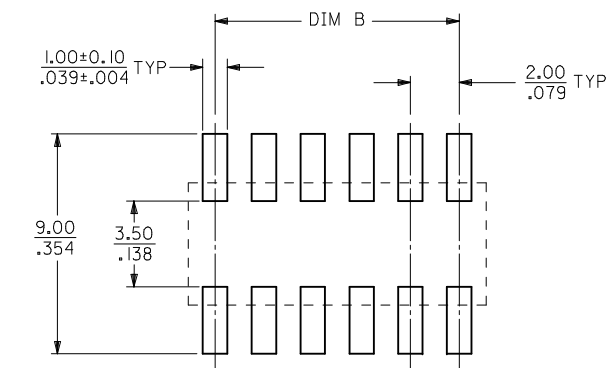
CORRECT PILOT HOLES LOCATION EC NO: S2010-0008 DRWN:SKANG 2009/07/14 CHKD:ATSEE 2009/07/14 APPR:MLONG 2009/07/17	DESCRIPTION D4	QUALITY SYMBOLS ▽=0 ◻=0	GENERAL TOLERANCES (UNLESS SPECIFIED)		DIMENSION STYLE MM/IN		SCALE NTS	DESIGN UNITS METRIC	THIRD ANGLE PROJECTION	
			mm	INCH	DRAWN BY JSGOH	DATE 1999/02/12	TITLE MGRID SIDE ENTRY RECEPTACLE SMT			
			4 PLACES ± --- ± ---	3 PLACES ± --- ± .008	CHECKED BY LCHANG	DATE 1999/06/10				
			2 PLACES ± 0.20 ± ---	1 PLACE ± --- ± ---	APPROVED BY JLIM	DATE 1999/06/17	MATERIAL NO. SEE TABLE DOCUMENT NO. SD-87368-001 SHEET NO. 2 OF 2			
DRAFT WHERE APPLICABLE MUST REMAIN WITHIN DIMENSIONS			ANGULAR ± 3 °		THIS DRAWING CONTAINS INFORMATION THAT IS PROPRIETARY TO MOLEX INCORPORATED AND SHOULD NOT BE USED WITHOUT WRITTEN PERMISSION					

PART NUMBER IN TAPE/REEL	PART NUMBER IN TAPE/REEL	CKT. SIZE	DIM A	DIM B	W	EMBOSSED TYPE
0.76um/30u" GOLD	0.38um/15 u" GOLD					
-	87368-1110	10	10.20/0.402	8.00/0.315	24.00/0.945	A
-	87368-1112	12	12.20/0.480	10.00/0.394	24.00/0.945	A
87368-0320	87368-1120	20	20.20/0.795	18.00/0.709	32.00/1.260	B
-	87368-1140	40	40.20/1.583	38.00/1.496	56.00/2.205	C
-	87368-1150	50	50.20/1.976	48.00/1.890	72.00/2.835	B



NOTE:

- MATERIAL: HOUSING - NYLON, GLASS FILLED, UL94V-0
COLOR: BLACK
TERMINAL - PHOSPHOR BRONZE
- FINISHES: TERMINAL - SELECTIVE GOLD IN THE CONTACT AREA:
THICKNESS = SEE TABLE
2.54um/100Mn MIN. SELECTIVE TIN
IN THE PC SOLDER TAIL AREA
BOTH OVER 1.27um/50Mn MIN. NICKEL OVERALL
- PRODUCT SPECIFICATION: PS-87264
- CIRCUIT SIZE 12 IS SHOWN FOR ILLUSTRATION ONLY, SEE CHART FOR AVAILABLE CIRCUIT SIZES.
- COPLANARITY OF SOLDER TAIL IS TO BE MEASURED BY RESTING THE PART ON A FLAT GAUGE SURFACE.
- PART MATEABLE TO ALL MILLI-GRID HEADERS WITH MATING PIN LENGTH BETWEEN 2.50mm AND 4.20mm.
- PART IS PACK IN TAPE AND REEL.
- PARTS SHALL BE PACKED IN MOISTURE BARRIER BAG.



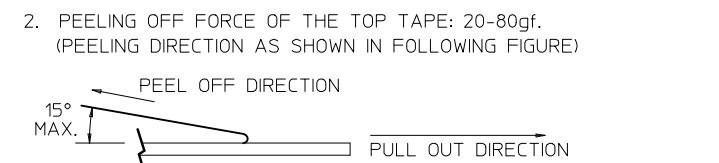
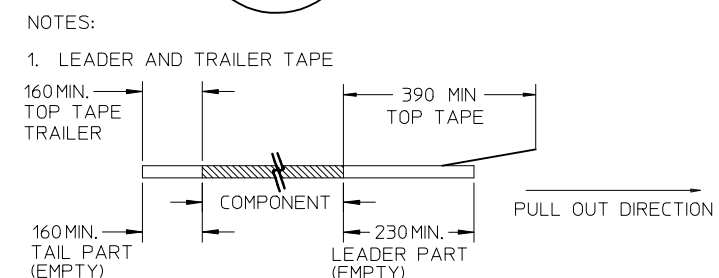
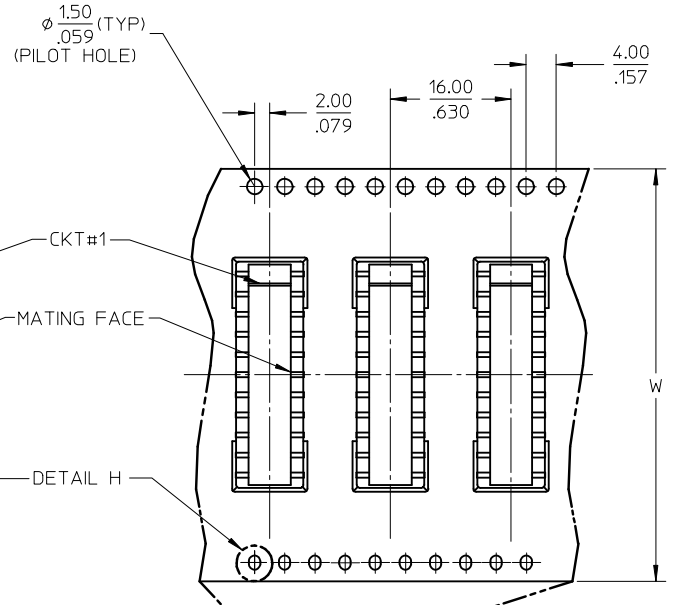
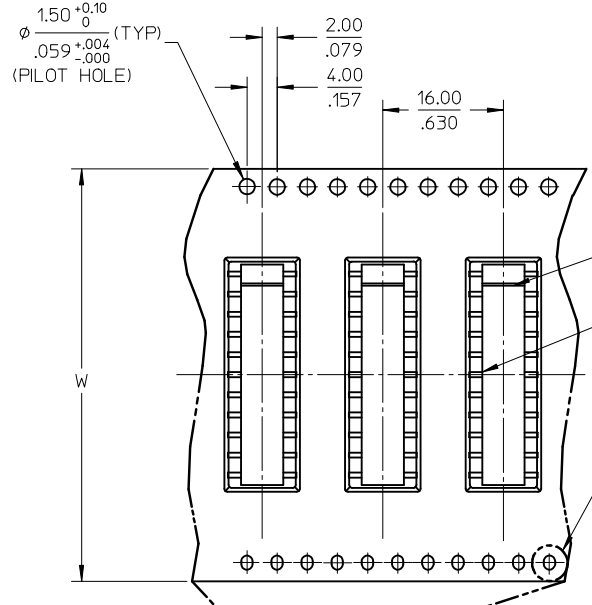
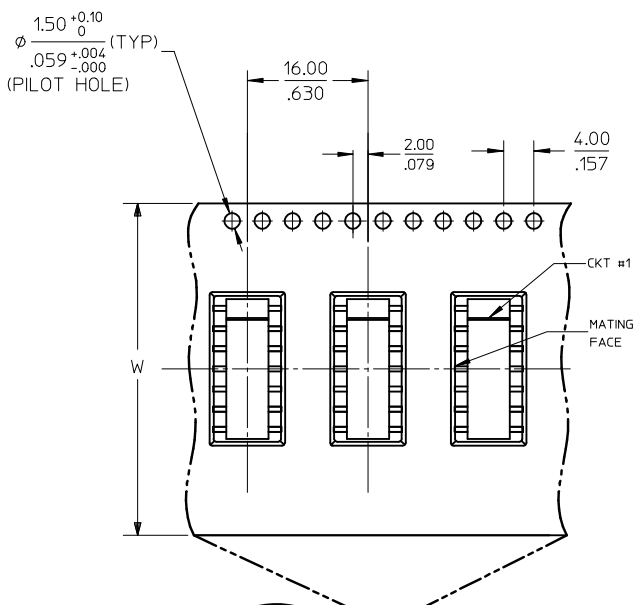
RECOMMENDED PC BOARD LAYOUT

CORRECT PILOT HOLES LOCATION EC NO: S2010-0008 DRWN:SKANG 2009/07/14 CHKD:ATSEE 2009/07/14 APPR:MLONG 2009/07/17	QUALITY SYMBOLS ▽=0 C=0	GENERAL TOLERANCES (UNLESS SPECIFIED)		DIMENSION STYLE MM/IN		SCALE NTS	DESIGN UNITS METRIC	THIRD ANGLE PROJECTION		
			mm	INCH	DRAWN BY JSGOH	DATE 1999/02/12	TITLE MGRID SIDE ENTRY RECEPTACLE SMT			
		4 PLACES	± ---	± ---	CHECKED BY LCHANG	DATE 1999/06/10	MATERIAL NO. SD-87368-001			
		3 PLACES	± ---	± .008	APPROVED BY JLIM	DATE 1999/06/17	DOCUMENT NO. SD-87368-001			
		2 PLACES	± 0.20	± ---	DRAFT WHERE APPLICABLE MUST REMAIN WITHIN DIMENSIONS					
		1 PLACE	± ---	± ---	SIZE A3 THIS DRAWING CONTAINS INFORMATION THAT IS PROPRIETARY TO MOLEX INCORPORATED AND SHOULD NOT BE USED WITHOUT WRITTEN PERMISSION					
		ANGULAR ± 3 °		SHEET NO. 1 OF 2						

EMBOSSED TYPE A

EMBOSSED TYPE B

EMBOSSED TYPE C



- PACKAGING STANDARD IS AS PER EIA-481.
- TAPE & REEL QUANTITY = 750PCS/REEL

CORRECT PILOT HOLES LOCATION EC NO: S2010-0008 DRWN:SKANG 2009/07/14 CHYKD:ATSEE 2009/07/14 APPR:MLONG 2009/07/17 D4	QUALITY SYMBOLS ▽=0 ▽=0	GENERAL TOLERANCES (UNLESS SPECIFIED)		DIMENSION STYLE MM/IN		SCALE NTS	DESIGN UNITS METRIC	THIRD ANGLE PROJECTION																	
		<table border="1"> <tr> <th></th> <th>mm</th> <th>INCH</th> </tr> <tr> <td>4 PLACES</td> <td>± ---</td> <td>± ---</td> </tr> <tr> <td>3 PLACES</td> <td>± ---</td> <td>± .008</td> </tr> <tr> <td>2 PLACES</td> <td>± 0.20</td> <td>± ---</td> </tr> <tr> <td>1 PLACE</td> <td>± ---</td> <td>± ---</td> </tr> </table>			mm	INCH	4 PLACES	± ---	± ---	3 PLACES	± ---	± .008	2 PLACES	± 0.20	± ---	1 PLACE	± ---	± ---	DRAWN BY: JSGOH DATE: 1999/02/12		TITLE: MGRID SIDE ENTRY RECEPTACLE SMT		MOLEX INCORPORATED		SHEET NO. 2 OF 2
			mm	INCH																					
		4 PLACES	± ---	± ---																					
3 PLACES	± ---	± .008																							
2 PLACES	± 0.20	± ---																							
1 PLACE	± ---	± ---																							
ANGULAR ± 3 °		APPROVED BY: JLIM DATE: 1999/06/17		MATERIAL NO.: SEE TABLE		DOCUMENT NO.: SD-87368-001		THIS DRAWING CONTAINS INFORMATION THAT IS PROPRIETARY TO MOLEX INCORPORATED AND SHOULD NOT BE USED WITHOUT WRITTEN PERMISSION																	
DRAFT WHERE APPLICABLE MUST REMAIN WITHIN DIMENSIONS		SIZE: A3		INCORPORATED AND SHOULD NOT BE USED WITHOUT WRITTEN PERMISSION																					