

HIGH DENSITY DOUBLE ROW LED FLEX RIBBON

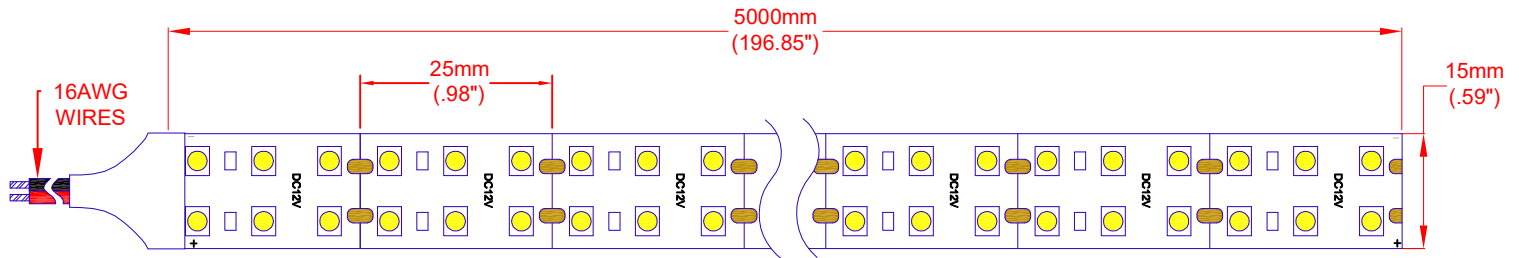
Features

VOLTAGE: 12V DC
 CURRENT: 4.3 Amps
 LED VIEWING ANGLE (2 θ 1/2): 120°

STANDARD PACKAGING:
 5 METER REEL (1200 LED'S)

OPTIONAL PACKAGING:
 INDIVIDUAL 500mm Sections (120 LED's)
 Order as ZFS-155000-CW/SEC

NOTE: Individual sections ARE NOT supplied with insulated wire connection.



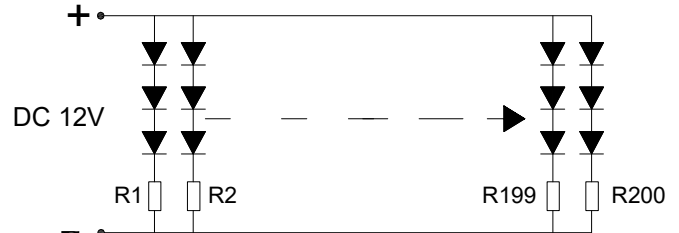
Accessories

- ZPS-1235 12V, 35 Watt Power Supply
- ZPS-1260 12V, 60 Watt Power Supply
- ZDM-01 PWM LED Dimmer

Note: ZPS-1235 and ZPS-1260 require use of wire nuts for connections.

Absolute Maximum Rating at Ta = 25°C

Parameter	Symbol	Rating	Units
Forward Current	IF	4.3	A
Power Dissipation	PD	57.25	W
Electrostatic Discharge	ESD	800	V
Operating Temperature	Topr	-20~+50	°C
Storage Temperature	Tstg	-30~+80	°C



Electro-Optical Characteristics (Ta = 25°C)

JKL Part Number	Color	Number of LED's	Input Voltage (V DC)	Power (W)	Current (A)	Radiance Angle	CCT (K)	Lumen Flux (lm)
ZFS-155000-CW	Cool White	1200	12	57.25	4.3	120°	6500°K	6925

Note

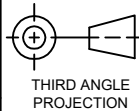
Please refer to JKL Application Sheet JKL-AS-ZFS-LED FLEX for Installation and Power Recommendations.



ATTENTION

OBSERVE PRECAUTION FOR HANDLING ELECTROSTATIC DISCHARGE SENSITIVE DEVICES

METRIC



THIRD ANGLE PROJECTION

DIMENSIONS ARE IN mm (INCHES)

TOLERANCE UNLESS OTHERWISE SPECIFIED
 1 PL +/- REF.
 2 PL +/- REF.
 ANGLE +/-

JKL COMPONENTS CORPORATION

TITLE
 12V HIGH DENSITY DOUBLE ROW LED FLEX RIBBON

REV. NO.	DESCRIPTION/ECO	APPVD DATE	APPROVED	DATE	SCALE	RELEASED DATE	REVISION DATE	SHEET
A	CHANGE SOLDER PADS TO 3 RELEASED	8/7/18	L. WENGSTROM	8/7/18	A	3/21/16	8/7/18	1 OF 1

- CAD DRAWING -
 MANUAL REVISIONS NOT PERMITTED

SIZE	FSCM NO.	DRAWING NO.	REVISION	SHEET
A	55335	ZFS-155000-CW	8/7/18	1 OF 1