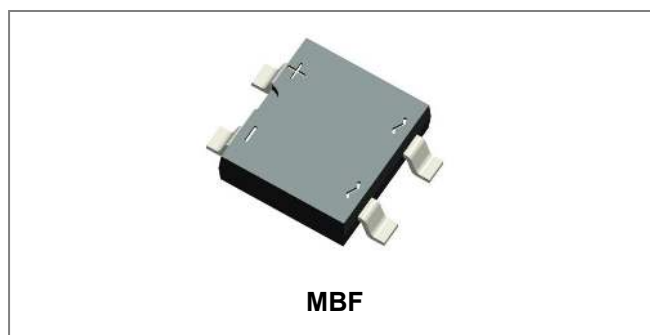


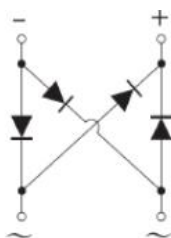
KMB12F THRU KMB120F SINGLE PHASE 1.0 AMP SURFACE MOUNT SCHOTTKY BRIDGE RECTIFIER



Features

- Schottky Barrier Chip
- Low Power Loss, High Efficiency
- Ideally Suited for Automatic Assembly
- Surge Overload Rating to 30A Peak
- Plastic Case Material has UL Flammability Classification 94V-0
- This is a Pb – Free Device
- All SMC parts are traceable to the wafer lot
- Additional testing can be offered upon request

Circuit Diagram



Mechanical Data

- Case: MBF, Molded plastic
- Terminals: Plated leads solderable per MIL-STD-202, Method 208
- Polarity: as marked on case
- Mounting Position: Any
- Marking: Type Number
- Lead Free: For RoHS / Lead Free Version

Maximum Ratings: @T_A=25°C unless otherwise specified

Type Number	Symbol	KMB 12F	KMB 13F	KMB 14F	KMB 145F	KMB 15F	KMB 16F	KMB 18F	KMB 110F	KMB 115F	KMB 120F	Unit
Peak Repetitive Reverse Voltage DC Blocking Voltage	V _{RRM} V _{DC}	20	30	40	45	50	60	80	100	150	200	V
RMS Voltage	V _{RMS}	14	21	28	31	35	42	56	70	105	140	V
Average Rectified Output Current (Note1)@T _A =90°C	I _o	1.0										A
Non-Repetitive Peak Forward Surge Current 8.3ms Single half sine-wave superimposed on rated load (JEDEC Method)	I _{FSM}	30										A
I ² t Rating for fusing (t < 8.3ms)	I ² t	5										A ² s

Electrical Characteristics @ $T_A=25^{\circ}\text{C}$ unless otherwise specified

Type Number	Symbol	KMB 12F	KMB 13F	KMB 14F	KMB 145F	KMB 15F	KMB 16F	KMB 18F	KMB 110F	KMB 115F	KMB 120F	Unit
Forward Voltage (per element) @ $I_F = 1\text{A}$	V_F	0.55			0.70			0.85		0.90		V
Peak Reverse Current @ $T_A = 25^{\circ}\text{C}$ At Rated DC Blocking Voltage @ $T_A = 100^{\circ}\text{C}$	I_{RM}	0.1						0.05				mA
		10						5				
Typical Junction Capacitance (per leg) (Note 2)	C_J	28										pF

* Pulse width < 300 μs , duty cycle < 2%

Thermal-Mechanical Specifications:

Type Number	Symbol	KMB 12F	KMB 13F	KMB 14F	KMB 145F	KMB 15F	KMB 16F	KMB 18F	KMB 110F	KMB 115F	KMB 120F	Unit
Typical Thermal Resistance (per leg) (Note 3)	$R_{\theta JA}$	75										$^{\circ}\text{C/W}$
Operating junction temperature range	T_J	-55 to +150										$^{\circ}\text{C}$
Storage Temperature Range	T_{STG}	-55 to +150										$^{\circ}\text{C}$
Case Style		MB-F										

Note: 1. Mounted on glass epoxy PC board with 1.3mm² solder pad.
2. Measured at 1.0 MHz and applied reverse voltage of 4.0V D.C.
3. Thermal RESistance From Junction to Ambient

Ratings and Characteristics Curves

FIG. 1- FORWARD CURRENT DERATING CURVE

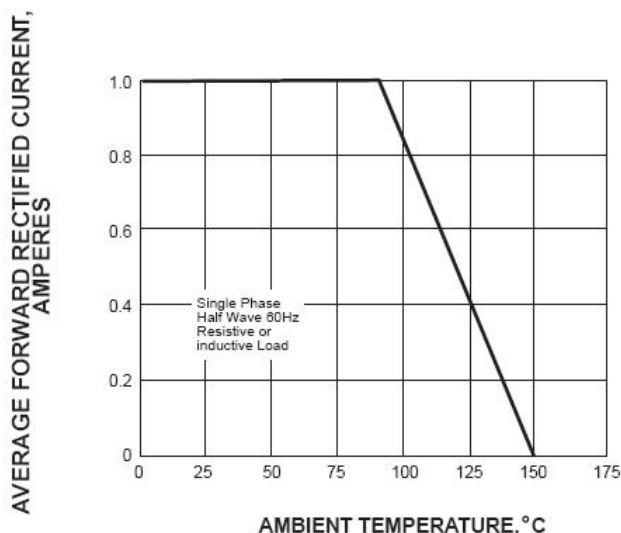
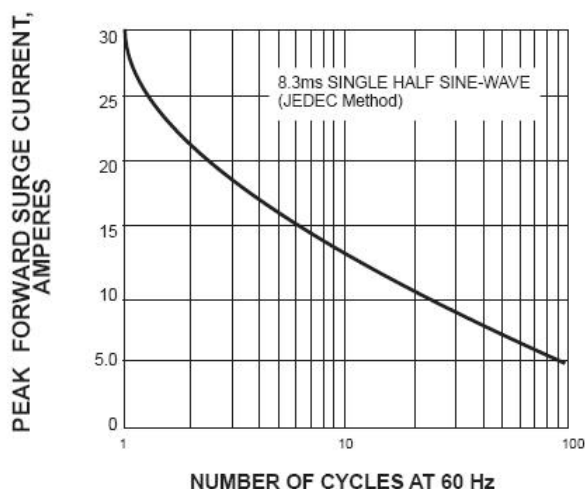
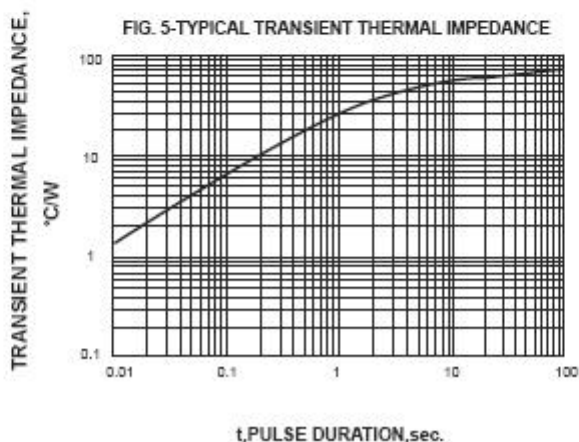
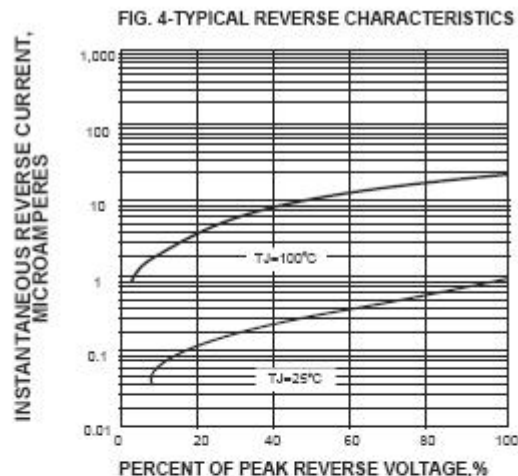
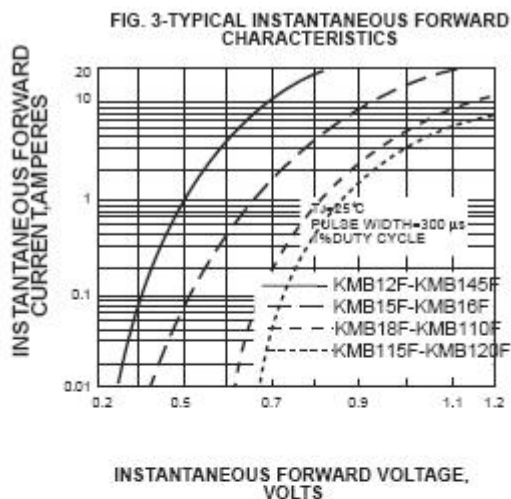


FIG. 2-MAXIMUM NON-REPETITIVE PEAK FORWARD SURGE CURRENT



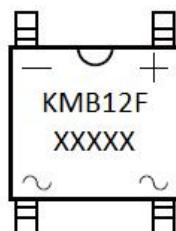


Ordering Information

Device	Package	Plating	Shipping
KMB12F THRU KMB120F	MBF (Pb-Free)	Pure Sn	5000pcs / reel

For information on tape and reel specifications, including part orientation and tape sizes, please refer to our tape and reel packaging specification.

Marking Diagram

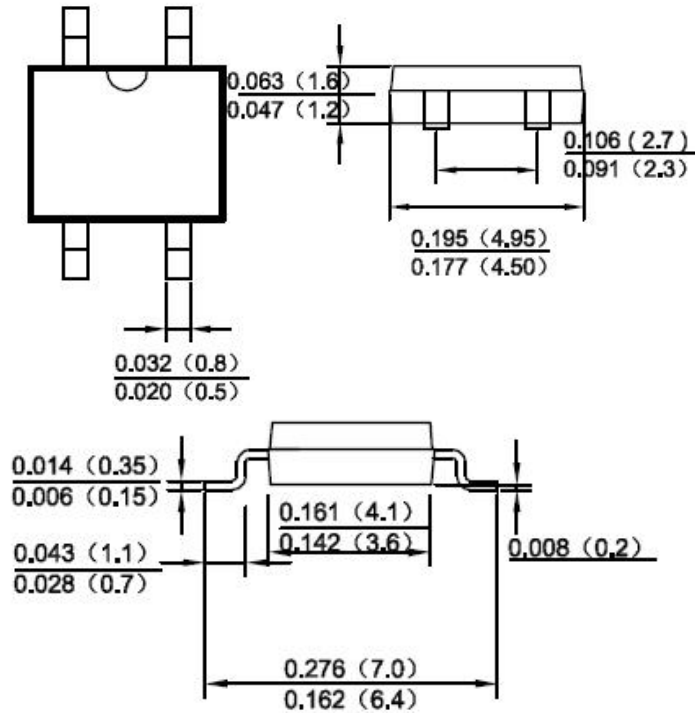


Where XXXXX is YYWWL

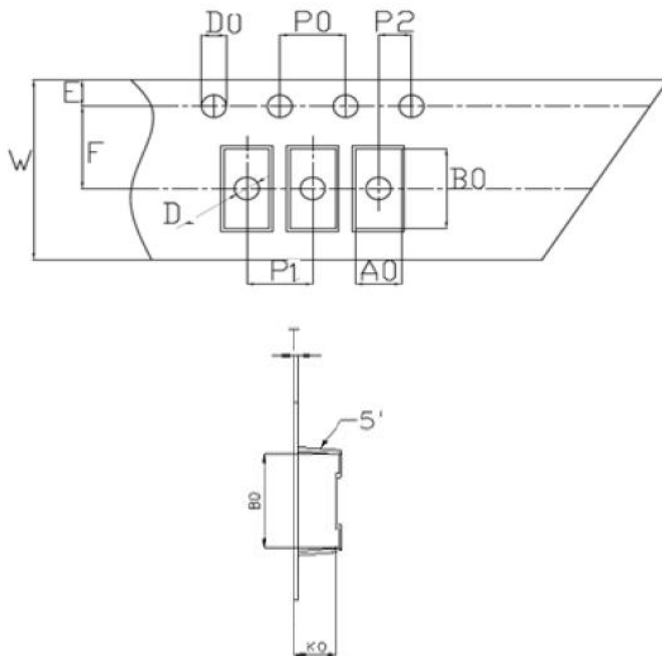
KMB12F = Type Number
YY = Year
WW = Week
L = Lot Number

Cautions: Molding resin
Epoxy resin UL:94V-0

Mechanical Dimensions MBF(Inches/Millimeters)



Carrier Tape & Reel Specification MBF



SYMBOL	Millimeters	
	Min.	Max.
A0	5.21	5.41
B0	7.10	7.30
D0	1.50	1.60
D1	1.40	1.60
P0	3.90	4.10
P1	7.90	8.10
P2	1.95	2.05
E	1.65	1.85
K0	1.55	1.75
F	5.45	5.55
W	11.90	12.10
T	0.24	0.30
10P0	39.80	40.20



**KMB12F
THRU
KMB120F**

**Technical Data
Data Sheet N1777, Rev. A**



DISCLAIMER:

- 1- The information given herein, including the specifications and dimensions, is subject to change without prior notice to improve product characteristics. Before ordering, purchasers are advised to contact the SMC Diode Solutions sales department for the latest version of the datasheet(s).
- 2- In cases where extremely high reliability is required (such as use in nuclear power control, aerospace and aviation, traffic equipment, medical equipment, and safety equipment), safety should be ensured by using semiconductor devices that feature assured safety or by means of users' fail-safe precautions or other arrangement.
- 3- In no event shall SMC Diode Solutions be liable for any damages that may result from an accident or any other cause during operation of the user's units according to the datasheet(s). SMC Diode Solution assumes no responsibility for any intellectual property claims or any other problems that may result from applications of information, products or circuits described in the datasheets.
- 4- In no event shall SMC Diode Solutions be liable for any failure in a semiconductor device or any secondary damage resulting from use at a value exceeding the absolute maximum rating.
- 5- No license is granted by the datasheet(s) under any patents or other rights of any third party or SMC Diode Solutions.
- 6- The datasheet(s) may not be reproduced or duplicated, in any form, in whole or part, without the expressed written permission of SMC Diode Solutions.
- 7- The products (technologies) described in the datasheet(s) are not to be provided to any party whose purpose in their application will hinder maintenance of international peace and safety nor are they to be applied to that purpose by their direct purchasers or any third party. When exporting these products (technologies), the necessary procedures are to be taken in accordance with related laws and regulations.