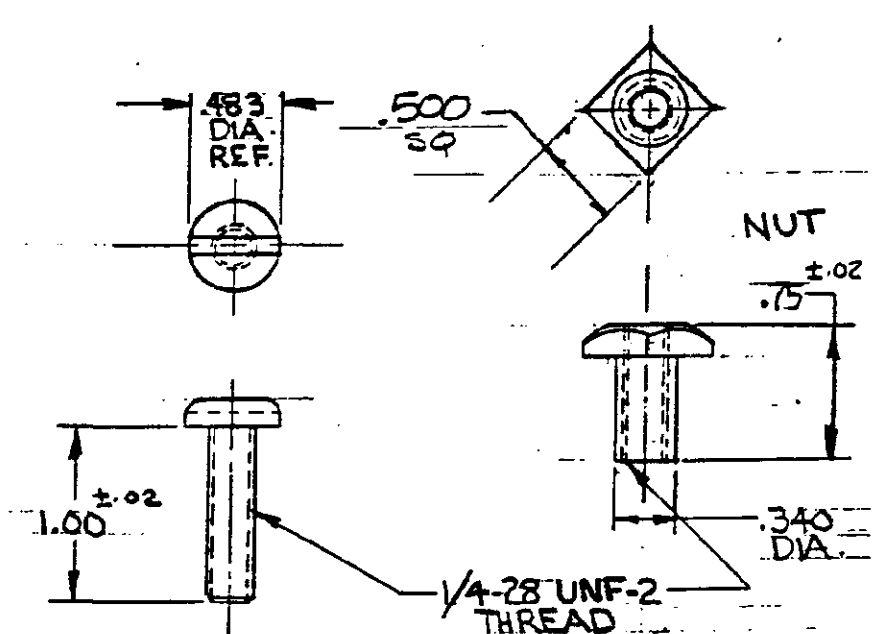
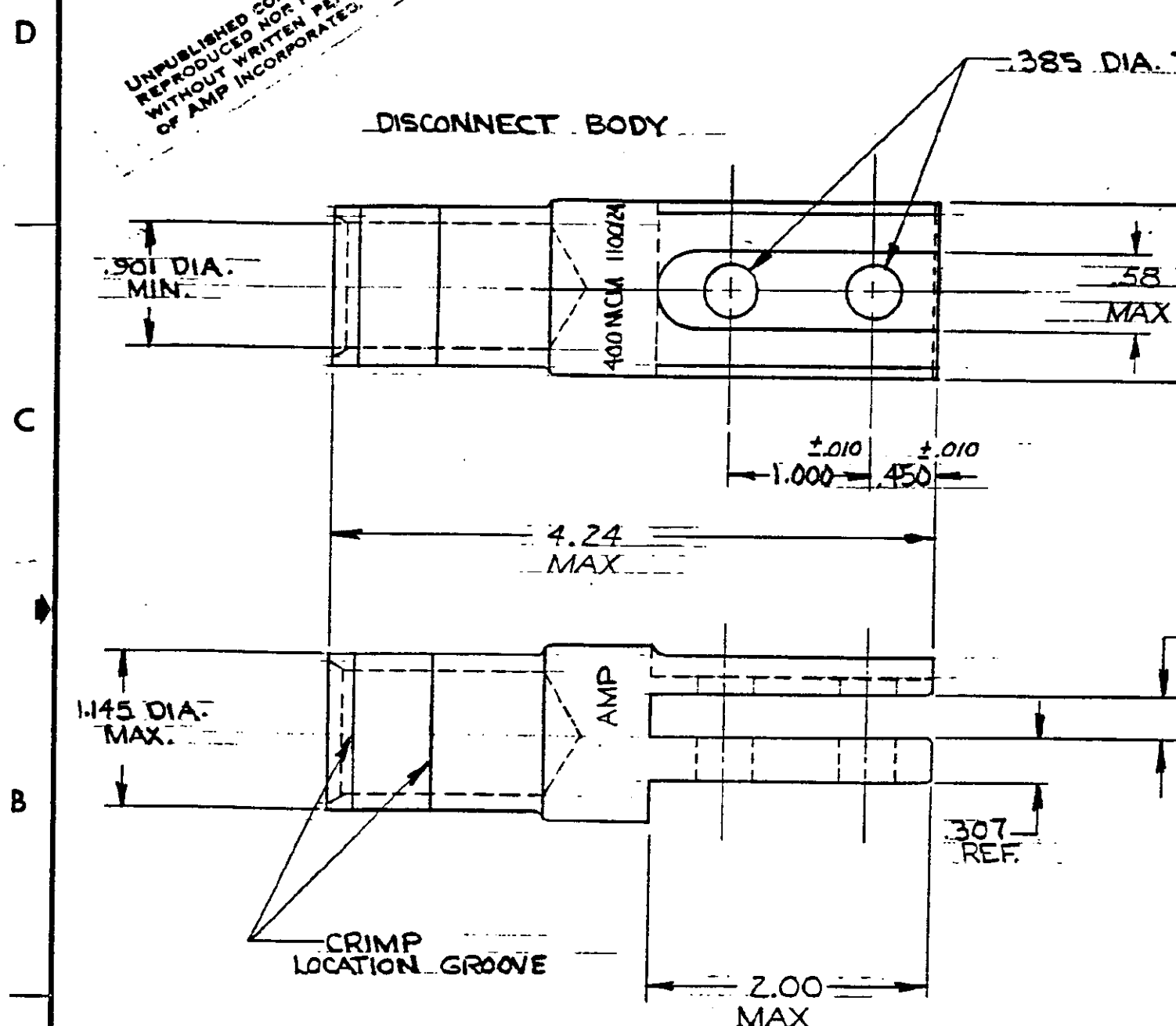


© COPYRIGHT 1975 BY AMP INCORPORATED, HARRISBURG, PA. ALL INTERNATIONAL RIGHTS RESERVED. AMP INCORPORATED PRODUCTS COVERED BY U. S. AND FOREIGN PATENTS AND/OR PATENTS PENDING.

REVISIONS						
P	F	ZONE	LTR	DESCRIPTION	DATE	APPROVED
		0		NPS 74-0542	RCH	10-20-75
		A		REV U-1037	DP	9/24/78
		B		ECN 850727		7-78
		C		ECN 1-12-90		1-90
		D		REV 0720-0856-96		6/96

UNPUBLISHED COPY NO. 10
REPRODUCED NOR PUBLISHED
WITHOUT WRITTEN PERMISSION
OF AMP INCORPORATED.



SCREW, PAN HEAD (ASA B18.6.3-1962)

NOTE:
1. ASSEMBLY CONSISTS OF ONE (1) EACH DISCONNECT BODY, SCREW, & NUT

DISCONNECT BODY: BRASS (QQ-B-626)		NUT: STEEL (QQ-S-631 OR 634) OR BRASS (QQ-B-626)		53661-1
TIN PLATED (MIL-T-10727)		SCREW: STEEL, TIN PLATED (MIL-T-10727)		
MATERIAL & FINISH				PART NO.
UNLESS OTHERWISE SPECIFIED DIMENSIONS ARE IN INCHES. TOLERANCES ON: DECIMALS ±.008 ANGLES ±5°	CONTRACT NO		AMP INCORPORATED Harrisburg, Pa.	
	DR	10/3/75		
MATERIAL	APPD	CHK	NAME	
SEE ABOVE	APPD	Abel 10-20-75	WIRE TERMINAL	
FINISH	DSGN APPD	OTHER APPD	AMPOWER DISCONNECT - BOLTED	
SEE ABOVE	R. Hoffman 10/3/75	Abel 10-20-75	WIRE SIZE: 400 MCM	
	SIZE	CODE IDENT NO	DRAWING NO	
	B	00779	53661	
	SCALE	1:1	SHEET	