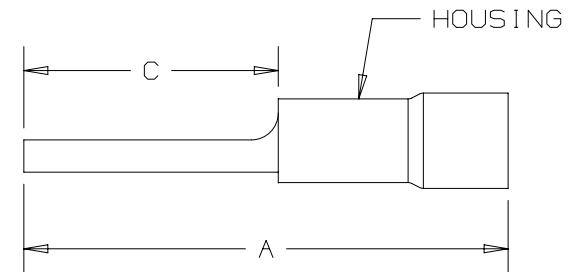
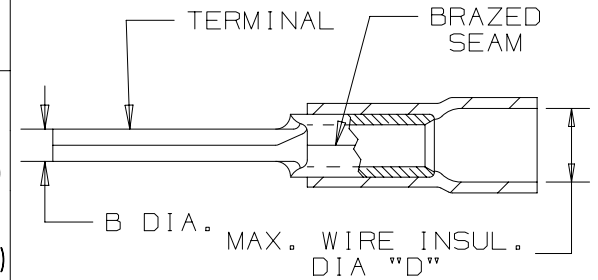


THIS COPY IS PROVIDED ON A RESTRICTED BASIS AND IS NOT TO BE USED IN ANY WAY DETRIMENTAL TO THE INTERESTS OF PANDUIT CORP.

2

1

PANDUIT PART #	WIRE RANGE		MAX. WIRE INSUL. DIA.	HOUSING COLOR	DIMENSIONS in. [mm]				TOOLS
	ENGLISH	METRIC			A ± .03 [0,8]	B ± .01 [0,3]	C ± .02 [0,3]	D DIA	
PV18-P47	22-18	0,5-1,0	.15 [3,8]	RED	.97 [24,6]	.07 [1,8]	.49 [12,4]	.15 [3,8]	CT-100# **CT-260 CT-600A (CT-550CH) CT-1550 CT-1551 CT-2500 (CT-2550CH)
PV14-P47	16-14	1,5-2,5	.17 [4,3]	BLUE	.97 [24,6]	.07 [1,8]	.49 [12,4]	.17 [4,3]	
PV10-P55*	12-10	4,0-6,0	.25 [6,4]	YELLOW	1.10 [27,9]	.10 [2,5]	.55 [14,0]	.25 [6,35]	



*NOT UL LISTED
**PANDUIT APPROVED TOOL

- NOTES:
- UL LISTED FOR:
 - A. SOLID OR STRANDED COPPER WIRE ONLY
 - B. 221°F [105°C] MAX. OPERATING TEMPERATURE
 - C. 600V. MAX. VOLTAGE RATING
 - SEE www.panduit.com FOR PACKAGE QUANTITIES
 - MATERIAL:
 - A. STAMPING: .03" [0,8] THK COPPER, TIN PLATED
 - B. HOUSING: VINYL, COLOR CODED
 - DIMENSIONS IN BRACKETS ARE METRIC EQUIVALENT
 - WIRE STRIP LENGTH: 5/16" +^{1/32} [7,9 +⁰/₃₂]
 - TOOLS MAY BE FOLLOWED BY A LETTER TO DESIGNATE REVISION.



LISTED
587H
E52164

					TITLE					PIN TERMINAL, VINYL INSULATED, FUNNEL ENTRY CUSTOMER DRAWING									
					ITEM REVISION NAME										N41335BA/15				
					DATASET FILE NAME					N41335BA/15									
					UNLESS OTHERWISE SPECIFIED, DIMENSIONAL TOLERANCES ARE: IN (mm)					MATERIAL: SEE NOTES									
					15 9/19 JHNU TMR MRJS 14 8/14 MBY JHNU RGB					REVISED LISTING: UL WAS cULus ADDED NOTE 6 051570 REVISED NOTES, MOVED TOOLS TO TABLE, REVISED CERTIFICATION N41335BA-A41335					DRAWING NUMBER: A41335				
REV	DATE	BY	CHK	APR	DESCRIPTION	ECN	DRAWN BY	DATE	CHK	SCALE	SHT 1 OF 1	SIZE							
							DAW	-	RLS	N.T.S.		A							

D101000DA/16

2

1