
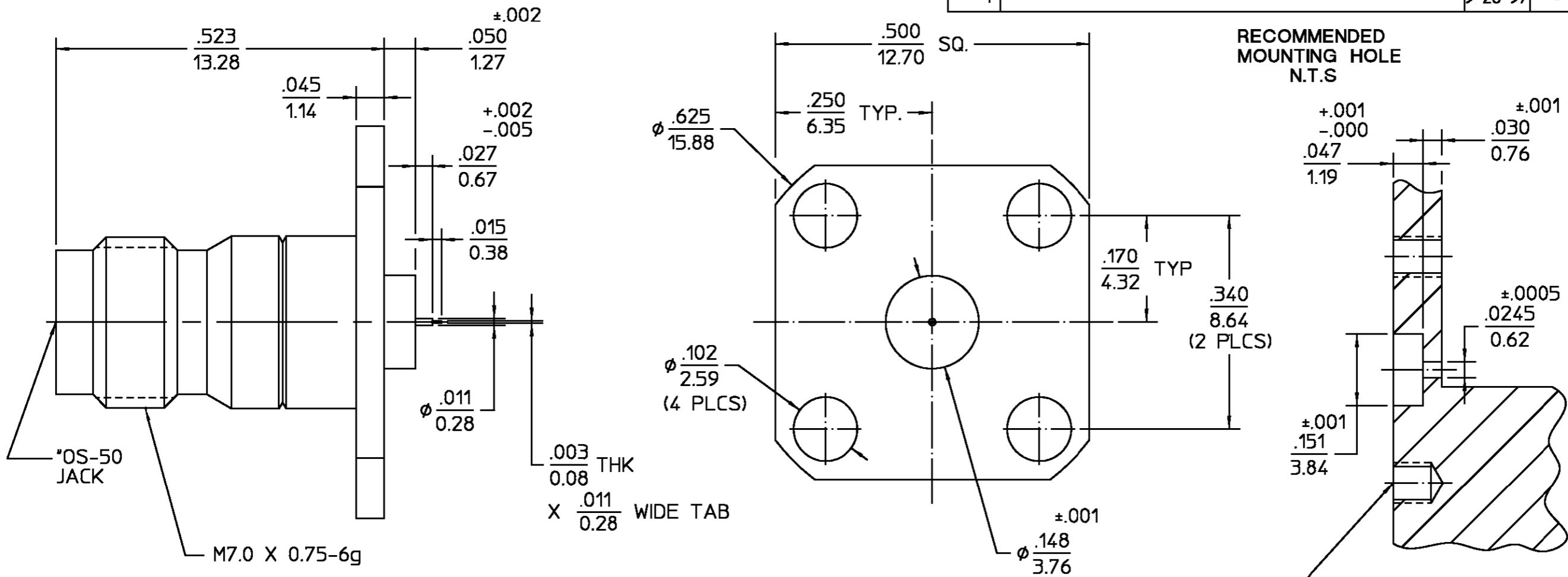


| REVISIONS | | | |
|-----------------|-------------|-----------------|---|
| REV | DESCRIPTION | DATE | APPROVED |
| 01 ₁ | REVISED | KYLE 9-26-97 |  10/21/97 |



RECOMMENDED LAUNCH GEOMETRY

| | |
|-----------|-------------|
| SUBSTRATE | .010 / .015 |
| LINE SIZE | .012 / .018 |

.XXX = in
XX.X = mm (REF)

| | | | | | |
|-----------------|--|----------------------------|---|-----------------------------|---|
| HOUSING BUSHING | STAINLESS STEEL PER ASTM-A484 AND ASTM-A582, TYPE 303 | PASSIVATE PER QQ-P-35 | UNLESS OTHERWISE SPECIFIED DIMENSIONS ARE IN INCHES FRAC. DEC. ANGLES ± 1/64 ±.005 ± 1° | DRAWN BY S.M DATE 8-15-88 | AMP Incorporated 140 Fourth Avenue Waltham, MA 02451-7599 |
| DIELECTRIC | PTFE FLUOROCARBON PER ASTM-D-1457 | N/A | | CHECKED BY DAC DATE 6-19-90 | |
| CENTER CONTACT | BERYLLIUM COPPER PER ASTM-B-196 OR ASTM-B-197, ALLOY C17300, CONDITION H | GOLD PLATE PER MIL-G-45204 | These drawings and specifications are the property of M/A COM Interconnect Div. and shall not be reproduced or copied or used in whole or in part as the basis for the manufacture or sale of item(s) without written permission. | APPD BY SR DATE 6-19-90 | TITLE "OS-50" JACK 4 HOLE FLANGE MOUNT TO MICROSTRIP |
| COMPONENT | MATERIAL | FINISH | | USE ASSY PROCEDURE | |
| | | | | SCALE 6:1 | SHEET 1 OF 1 |

CUSTOMER DRAWING

AMP PART # 1063357-1
SHEET 1 OF 1 REV A