

4

3

2

1

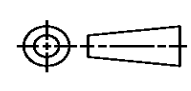

THIS DRAWING IS UNPUBLISHED. RELEASED FOR PUBLICATION
 © COPYRIGHT ALL RIGHTS RESERVED.

LOC	DIST	REVISIONS			
P	LTR	DESCRIPTION	DATE	DWN	APVD
	B1	ECR-16-009824	28JUL2016	GK	SD

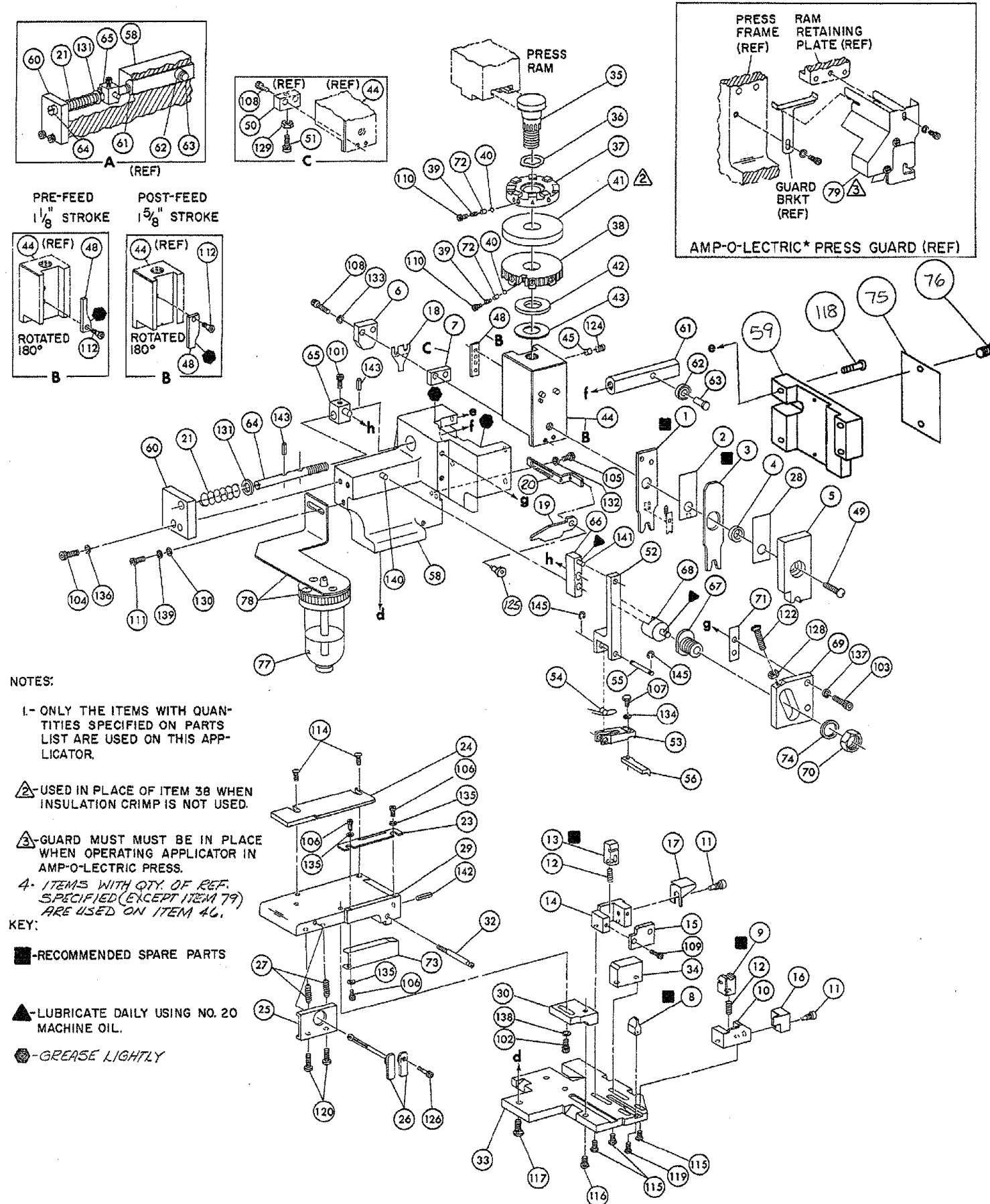
REPLACED BY OCEAN STYLE APPLICATOR PART NUMBER 2836284-1

FOR REPLACEMENT PARTS FOR APPLICATOR 466441-6
 REFER TO ADDITIONAL PAGE(S). SPARE PARTS KIT (IF LISTED)
 WILL REMAIN AVAILABLE.

THE REPLACEMENT OCEAN STYLE APPLICATOR HAS THE
 SAME TERMINATOR/PRESS INTERFACE AS APPLICATOR
 466441-6

THIS DRAWING IS A CONTROLLED DOCUMENT.		DWN	GOPALAKRISHNA HV		
DIMENSIONS:		CHK	GOPALAKRISHNA HV		
		TOLERANCES UNLESS OTHERWISE SPECIFIED:		 TE Connectivity	
		APVD	STOUGH DALE		
		PRODUCT SPEC	NAME		
		APPLICATION SPEC	MINIATURE QUICK CHANGE APPLICATOR SIDE FEED FASTON TAB		
MATERIAL		WEIGHT	SIZE	CAGE CODE	DRAWING NO
FINISH			A3		©- 466441-6
		CUSTOMER DRAWING	SCALE	SHEET 1 OF 2	REV B1

THIS IS A CONTROLLED DOCUMENT.



NOTES:

1- ONLY THE ITEMS WITH QUANTITIES SPECIFIED ON PARTS LIST ARE USED ON THIS APPLICATOR.

2- USED IN PLACE OF ITEM 38 WHEN INSULATION CRIMP IS NOT USED.

3- GUARD MUST BE IN PLACE WHEN OPERATING APPLICATOR IN AMP-O-LECTRIC PRESS.

4- ITEMS WITH QTY. OF REF. SPECIFIED (EXCEPT ITEM 79) ARE USED ON ITEM 46.

KEY:

■ - RECOMMENDED SPARE PARTS

▲ - LUBRICATE DAILY USING NO. 20 MACHINE OIL.

● - GREASE LIGHTLY

REF.	QTY	PART NO	DESCRIPTION	ITEM NO	REF.	QTY	PART NO	DESCRIPTION	ITEM NO
21045-3			RING, RETAINING 'C' (.187 DIA) FEED FINGER PIN	145	454220-1			CAP, HOUSING	59
5-21028-1			PIN, SLOT SPR (.125 DIA X .50) ADJ ROD	143	454485-1			HOUSING	58
4-21028-0			PIN, SLOT SPR (.093 DIA X .75) STR G PLATE	142	690542-2			PAWL, FEED	56
1-21030-1			PIN, DOWEL (.187 DIA X .50) LEVER	141	240624-1			PIN, FEED FINGER	55
1-21030-6			PIN, DOWEL (.187 DIA X 1.25) HOUSING	140	691499-1			SPRING, FEED FINGER	54
21024-5			WASHER, LOCK (NO 10) LUB ASSY	139	690541-1			FINGER, FEED	53
21024-5			WASHER, LOCK (NO 10) STRIP GUIDE ADJ BLOCK	138	455679-1			LEVER, TERMINAL FEED ARM	52
21024-5			WASHER, LOCK (NO 10) ADJ PLATE	137				BUMPER, HOLDDOWN	51
21024-5			WASHER, LOCK (NO 10) FEED GUIDE ROD	136				SPACER, TONKER	50
21057-2			WASHER, LOCK (NO 4) FRONT STRIP GUIDE	135	7-21002-9			BOLT, CRIMPER	49
21024-4			WASHER, LOCK (NO 8) FEED FINGER	134	690602-6			CAM PRE-FEED	48
21024-4			WASHER, LOCK (NO 8) DEPRESSOR	133					47
21024-4			WASHER, LOCK (NO 8) STRIPPER	132					46
21899-4			WASHER, FLAT (5/16 DIA) SCREW ADJ	131	459456-1			APPLICATOR, BASIC (SUB ASSY)	45
21899-2			WASHER, FLAT (NO 10) LUB ASSY	130	690191-1			PLUG, NYLON	44
21068-5			NUT, HEX MACH (6-32) HOLDDOWN	129	455673-1			RAM	43
21068-5			NUT, HEX MACH (6-32) FEED ADJ	128	690125-1			WASHER, LAMINATED	42
				127	690124-1			WASHER, RAM	41
				126				DISC, SPACER	40
22353-8			SCR, SHLD. (.187 DIA X .250 LG) DRAG LEVER	125	23241-6			BALL, STEEL	39
992031-1			PIN, CLEVIS	124	690170-1			SPRING, COMPRESSION	38
21009-2			SCR, SKT SET (1/4-20 X .25) (LOC-WEL) RAM	123	690142-1			DISC, INSULATION	37
				122	5-690141-1			DISC, WIRE	36
6-23715-4			SCR, PANHD MACH (6-32 X 1.25) FEED ADJ	121	22480-5			WASHER, SPRING	35
				120	690212-1			POST, RAM	34
3-21002-0			SCR, BUT HD SKT CAP (10-32 X .88) DRAG	119	690786-2			SUPPORT, TERMINAL	33
2-2733-8			SCR, BUT HD SKT CAP (8-32 X .38) (LOC-WEL) ANVIL	118	455675-1			PLATE, BASE	32
2-21002-9			SCR, BUT HD SKT CAP (10-32 X .75) CAP	117	690432-3			SCREW, ADJUSTMENT	31
2-22733-8			SCR, BUT HD SKT CAP (1/4-20 X .62) HOUSING	116					30
2-21002-7			SCR, BUT HD SKT CAP (10-32 X .50) SG ADJ BLOCK	115	455689-1			BLOCK, STRIP GUIDE ADJ	29
2-21002-2			SCR, BUT HD SKT CAP (8-32 X .50) SHEAR	114	455671-2			PLATE, STRIP GUIDE	28
2-21002-2			SCR, BUT HD SKT CAP (8-32 X .50) R STRIP GUIDE	113	455888-4			SPACER, FRONT SHEAR DEPRESSOR	27
				112	1-22284-0			SPRING, DRAG	26
1-21002-7			SCR, BUT HD SKT CAP (6-32 X .38) CAM	111	690546-1			LEVER, DRAG RELEASE	25
3-21000-4			SCR, SKT HD CAP (10-32 X .38) LUBRICATOR ASSY	110	240792-1			DRAG, STOCK	24
2-3030-1			SCR, SKT HD CAP (6-32 X .25) (LOC-WEL) CP DISC	109	690440-6			GUIDE STRIP (REAR)	23
				108	690438-1			GUIDE, STRIP (FRONT)	22
				107					21
2-22603-0			SCR, HEX HD MACH (8-32 X .31) FEED FINGER	106	4-22284-9			SPRING, FEED RETURN	20
1-21000-3			SCR, SKT HD CAP (4-40 X .25) F STRIP GUIDE	105	679218-1			ARM, STRIPPER	19
2-21000-7			SCR, SKT HD CAP (10-32 X .75) STRIPPER	104	455949-1			STRIPPER	18
3-21000-6			SCR, SKT HD CAP (10-32 X .62) FEED ADJ BLOCK	103					17
3-21000-4			SCR, SKT HD CAP (10-32 X .38) SG ADJ BLOCK	102					16
3-21000-4			SCR, SKT HD CAP (10-32 X .38) PIVOT BLOCK	101	318563-1			GUARD, CHIP (FRONT)	15
455749-1			GUARD, WINDOW	79				PLATE, SHEAR (REAR)	14
1-465184-0			LUBRICATOR ASSY	78				HOLDER, SHEAR (REAR)	13
				77				SHEAR, FLOAT (REAR)	12
				76	5-22280-0			SPRING, SHEAR	11
21017-2			SCR, DRIVE (#2 X .19) ID PLATE	75	690461-1			STOP, SHEAR	10
461264-1			PLATE, ID	74	690459-1			HOLDER, SHEAR (FRONT)	9
458109-1			WASHER, SPECIAL	73	454276-1			SHEAR, FLOAT (FRONT)	8
151877-8			PLATE, STRIP GUIDE COVER	72	690471-4			ANVIL	7
690603-1			SPRING, ASSIST	71				SPACER, DEPRESSOR (REAR)	6
690517-1			SPACER	70	1-455889-4			DEPRESSOR, SHEAR (REAR)	5
22594-8			NUT, HEX	69	238011-4			DEPRESSOR, SHEAR (FRONT)	4
240628-1			PLATE, ADJUSTMENT	68	683454-1			SPACER, TUBULAR, INS CRIMPER	3
240626-1			SHAFT, PIVOT	67	455888-9			CRIMPER, INSULATION	2
240633-1			BUSHING	66	2-456406-0			SPACER, CRIMPER	1
455680-1			LEVER, INTERMEDIATE	65				CRIMPER, WIRE	
240629-1			BLOCK, PIVOT	64					
240632-2			SCREW, ADJUSTMENT FEED ROD	63					
240659-3			PIN, CAM ROLLER	62					
240658-1			ROLLER, CAM	61					
454398-2			ROD, FEED	60					
454178-1			GUIDE, FEED ROD	59					

CRIMPING DATA				APPLICATOR WILL APPLY	
PAD LTR	CRIMP HEIGHT	WIRE SIZE	WIRE STRIP LENGTH		
A	.062	18			12490
B	.060	20			63857
C	.057	22			
D	NOT USED				
CRIMP	SIZE	TYPE	FEED	APPL INST	
WIRE	.090	F	.440	A18040	
INSUL	.155	O			
WIRE RANGE	22-18	INSULATION RANGE	1.880-.120	PRESS NO	354500-1
REMARKS: PRE-FEED BENCH G-TEAM					

REMARKS	NO	REV
APPL USED ON MACHINE PART NO	MACH SERIAL NO	DISTRIBUTION
CUSTOMER NAME	APPL SERIAL NO	ORIGINAL
ADDRESS	PURCHASE ORDER	CUSTOMER COPY
CITY	ENG APP	FIELD ENG COPY

SET UP PAGE 10-1	458637-1 43	DR C. ERILMAN 11-02	DR C. ERILMAN 11-01	APP T. ELBIN 11-01
ECN 6150-116-04	ECN 0150-050-03	NAME	MINIATURE QUICK CHANGE APPLICATOR	SIDE FEED (FASTON TAB)

AMP 2993-3 (9-73)