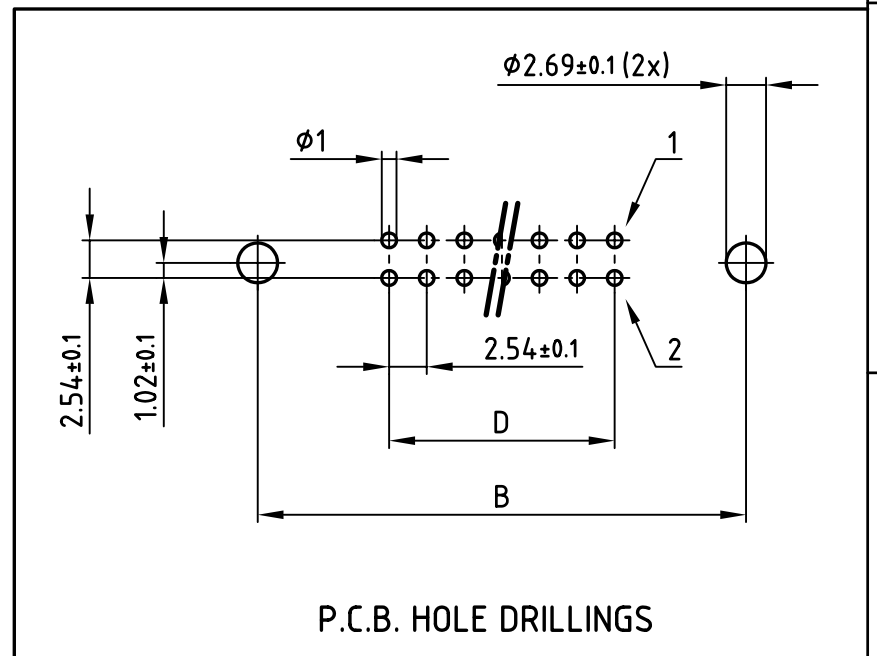
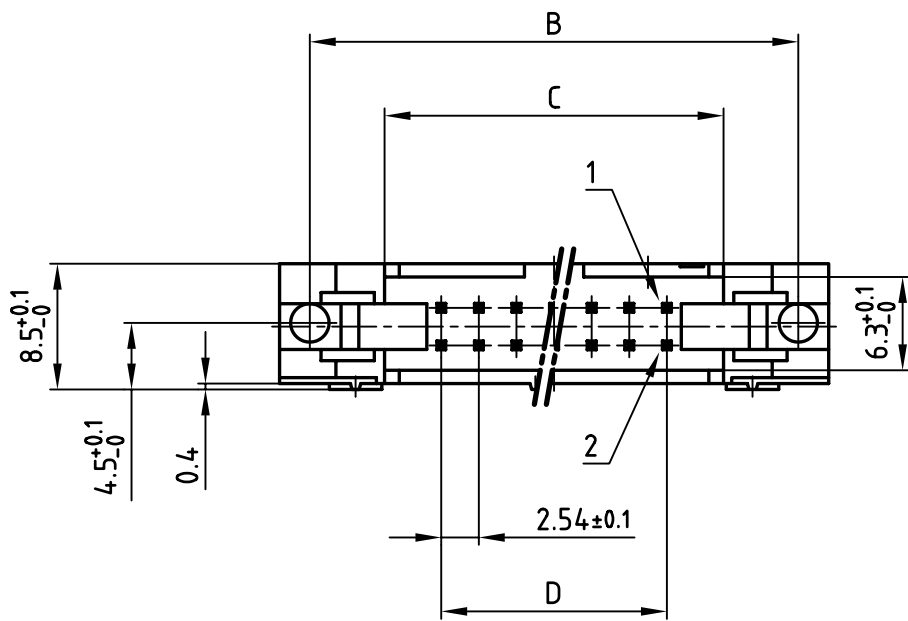
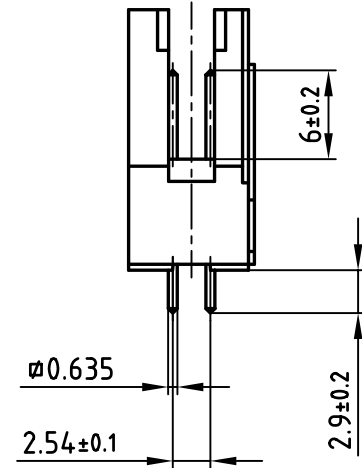
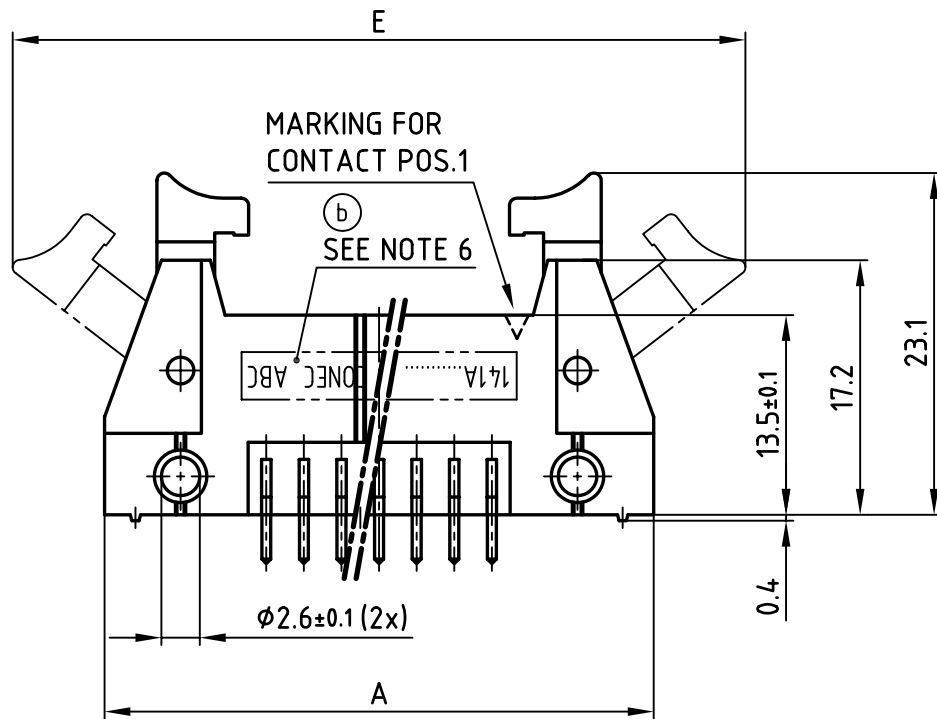


used for: DIN 41651



No. of pos.	A ±0.2	B ±0.1	C +0.2	D ±0.1	E	Part-NO.
10	32.00	27.94	17.82	4x2.54=10.16	44.50	141A10199X
14	37.08	33.02	22.90	6x2.54=15.24	49.50	141A10209X
16	39.62	35.56	25.44	7x2.54=17.78	52.10	141A10219X
20	44.70	40.64	30.52	9x2.54=22.86	57.00	141A10229X
26	52.32	48.26	38.14	12x2.54=30.48	64.60	141A10239X
34	62.48	58.42	48.30	16x2.54=40.64	74.80	141A10249X
40	70.10	66.04	55.92	19x2.54=48.26	82.40	141A10259X
50	82.80	78.74	68.62	24x2.54=60.96	95.20	141A10269X
60	95.50	91.44	81.32	29x2.54=73.66	107.90	141A10279X
64	100.58	96.52	86.40	31x2.54=78.74	113.02	141A12319X

**NOTES:**

- INSULATORS: PBTP UL 94 V-0, GREY
- CONTACTS: COPPER ALLOY  
PLATING: GOLD over NICKEL  
50 MATING CYCLES
- OPERATING TEMPERATURE RANGE: -40°C TO +105°C
- CURRENT CARRYING CAPACITY: 1A
- TEST VOLTAGE: 1000 Veff.
- CONNECTOR IS PART MARKED: PART-NO. CONEC ABC



APPROVAL # FREIGABE # DEBLOCAGE # AUTOR/ZACION # APPROVAL

CUSTOMER APPROVAL DATE:

NAME: TITLE:

COMPANY NAME:

APPROVAL # FREIGABE # DEBLOCAGE # AUTOR/ZACION # APPROVAL

THIS DRAWING MAY NOT BE COPIED OR REPRODUCED IN ANY WAY, AND MAY NOT BE PASSED ON TO A THIRD PARTY WITHOUT WRITTEN PERMISSION.  
OWNERSHIP AND COPYRIGHT OF CONEC GmbH

**DO NOT ALTER CAD DRAWING BY HAND**

2 x b	Ä 3115	24.09.2008	Lehmen
a	Origin		
rev.	description	date	name

tolerance		scale:	2:1
		material:	SEE NOTES
2007	date	name	title: <b>HEADER</b> 10-64pos. STRAIGHT SOLDER PINS 2.9mm with short latch
drawn	27.06.	Lehmenkühler	
appd.	27.06.	Mickenbecker	
		norm	DIN 41651
		d-old	
dwg no:		AutoCAD 2006	DIN-A
part no:		14K1A018	3
			sh:1/1
part no:		SEE TABLE	

