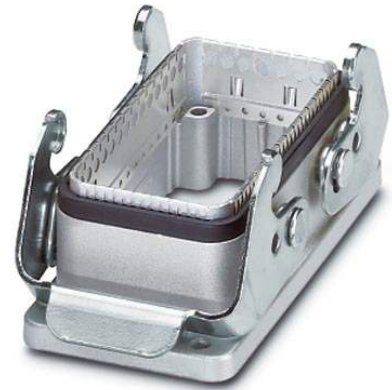



HC-B 10-AMQ-EMV

Order No.: 1642522

<http://eshop.phoenixcontact.de/phoenix/treeViewClick.do?UID=1642522>HEAVYCON panel mounting base B10, with double locking latch,
EMC version. Not suitable for D series terminal adapters

Commercial data	
GTIN (EAN)	 4 046356 028462
sales group	D002
Pack	10 pcs.
Customs tariff	85389099
Catalog page information	Page 519 (PC-2009)

Product notesWEEE/RoHS-compliant since:
07/03/2006

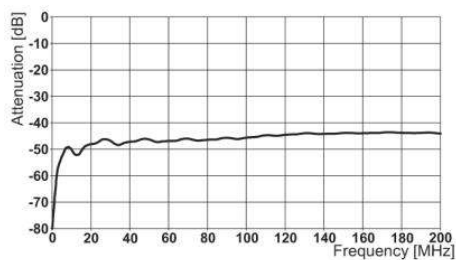
<http://www.download.phoenixcontact.com>
Please note that the data given here has been taken from the online catalog. For comprehensive information and data, please refer to the user documentation. The General Terms and Conditions of Use apply to Internet downloads.

Technical data	
General data	
Note	For contact inserts HC-B10, BB18, DD42, M, K8/24
Design	B10
Height	30.5 mm
Width	48 mm

Length	93 mm
Housing type	EMC housings
Locking type	With double locking latch
Degree of protection	IP65
Ambient temperature (operation)	-40 °C ... 100 °C
Housing material	Aluminum, die-cast
Housing surface material	EMC coating, silver
Seal material	NBR, conductive
Material lock	Steel, galvanized
Length of the assembly cutout	60 mm
Width of the assembly cutout	35 mm
Assembly instructions	Cannot be used for HC-D... series terminal adapters.
Connection	If insulating powder coating is present on the control cabinet panel, it should be removed from the profile gasket area in order to ensure optimum shielding.

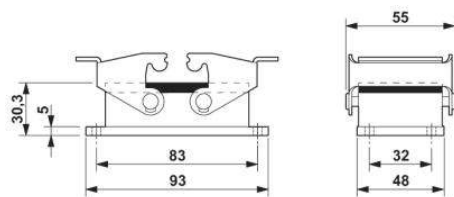
Diagrams/Drawings

Diagram

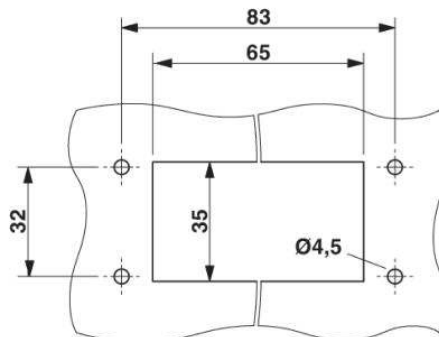


Shield attenuation

Dimensioned drawing



Dimensional drawing



Panel cutout

Address

PHOENIX CONTACT Deutschland GmbH
Flachmarktstr. 8
32825 Blomberg, Germany
Phone +49 5235 3 12000
Fax +49 5235 3 41200
<http://www.phoenixcontact.de>



© 2010 Phoenix Contact
Technical modifications reserved;