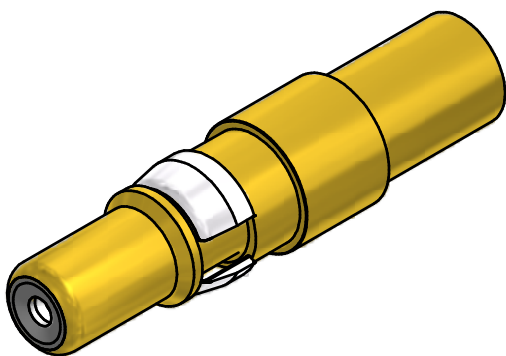
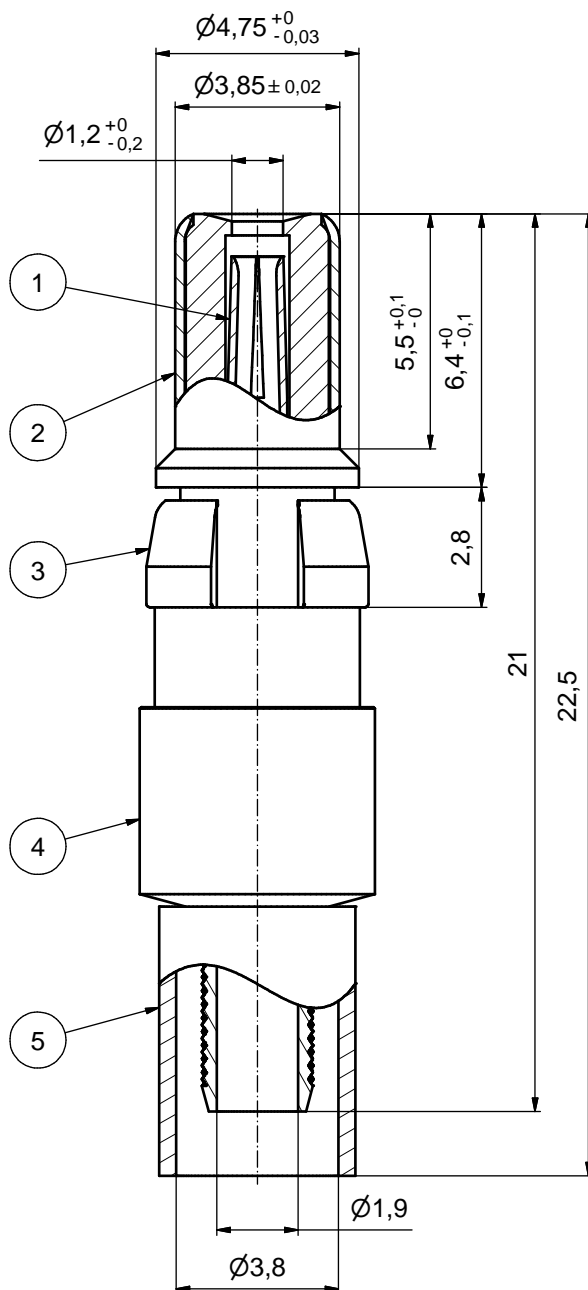
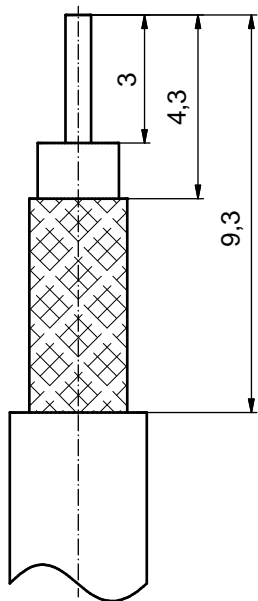


STRIPPING DIMENSIONS



**ASSEMBLY TOOLING:**

1. CENTER CONTACT:  
 USE CRIMP TOOL: 360X10329X  
 WITH TOOL INSERT: 360X11049X  
 SELECTOR SETTING: 5 (FOR AWG26 CENTER CONDUCTOR OF CABLE)
2. CRIMP FERRULE:  
 USE CRIMP TOOL: 360X10519X  
 WITH TOOL INSERT: 360X11039X  
 INSERT CAVITY B: HEX 3.83/.151

Part no.	Finish Pos.1	Finish Pos.2	Finish Pos.3	Finish Pos. 4/5
131J21029X	min. 50µin HARD GOLD over min. 50µin NICKEL	min. 30µin HARD GOLD over min. 50µin NICKEL	NICKEL PLATED	GOLD FLASH over NICKEL
131A21029X	GOLD FLASH over NICKEL	GOLD FLASH over NICKEL	NICKEL PLATED	GOLD FLASH over NICKEL

Directive 2002/95/EC RoHS compliant

THIS DRAWING MAY NOT BE COPIED OR REPRODUCED IN ANY WAY, AND MAY NOT BE PASSED ON TO A THIRD PARTY WITHOUT WRITTEN PERMISSION. OWNERSHIP AND COPYRIGHT OF CONEC GmbH  DO NOT ALTER CAD DRAWING BY HAND	tolerance		dim. in mm	scale: 8:1	
				material: COPPER ALLOY (Pos.1 - 5)	
	drawn	06.10.10	Schmidt	title: COAXIAL CONTACT PLUG 50 OHM	
	appd.	06.10.10	Koch	inner + outer conductor for crimp termination for cable 316U double braided	
	norm			dwg no: Inventor 10	
d-old			DIN-A3		
a	Origin		13K2A032A		
rev.	description	date	name	part no: see table	
				sh: 1	