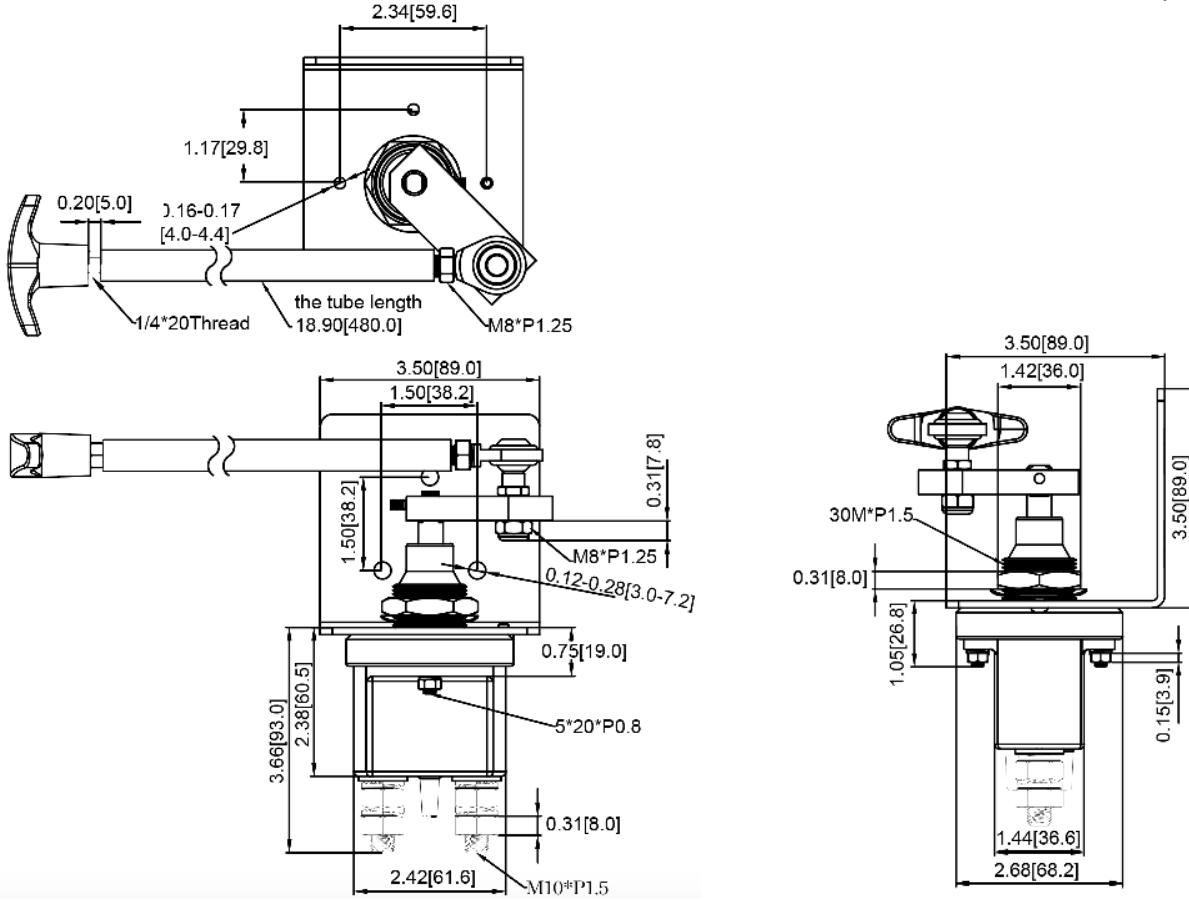
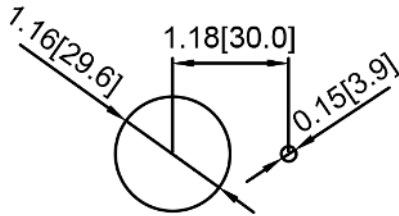


## Mechanical Dimensions: Inches [mm]

Tolerances  $\pm 0.012$  [0.3] Unless Otherwise Specified

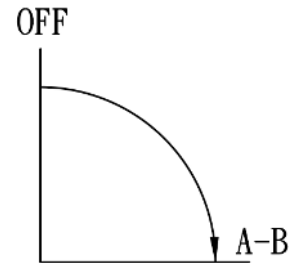


## Mounting Hole



## Circuit Diagram

**SPST:** Does not disconnect alternator or generator field circuit.



## Electrical Specifications

Continuous Rating	300A 24VDC
Intermittent Rating	2000A for 5secs intervals
Insulation Resistance	DC 500V 100M ohm Min
Dielectric Strength	AC 1000V 1 minute

## Material Specifications

- Includes Fixed Handle
- Includes Extension Handle
- Doesn't include Mounting Bracket

**Rev      Date of issue      Revision Notes**

**Designed      Approved**

A	05-12-2020	Initial Drawing	RC	OF
---	------------	-----------------	----	----