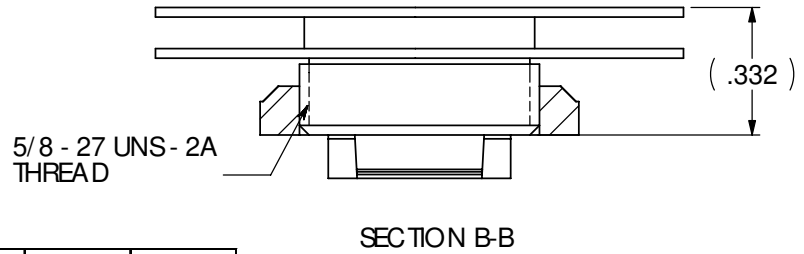
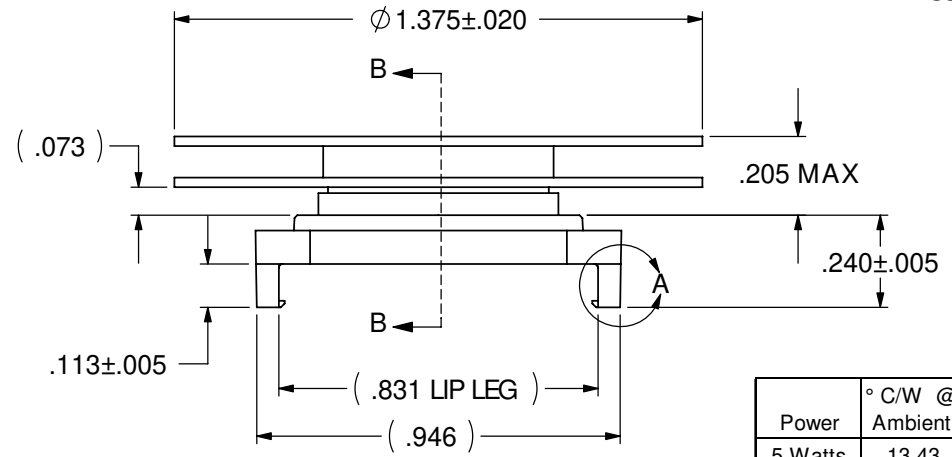
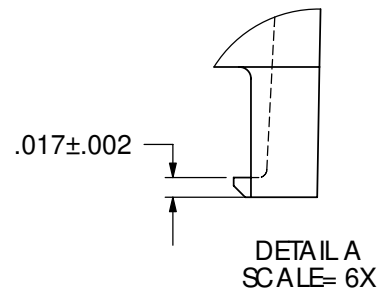
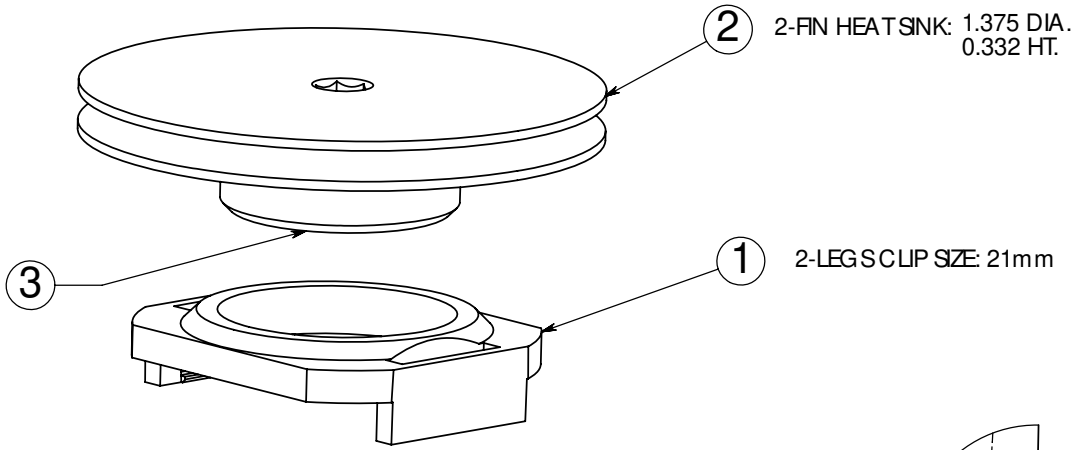


REVISION(S)			
LTR	DESCRIPTION	INIT	APP'D
O	0S60-0040-04	E.T 02/18/04	B.P 02/23/04
A	ECR-06-014978	E.T 6/23/06	V.K 6/26/06



Power	° C/W @ Ambient	° C/W @ 200 LFM	° C/W @ 400 LFM	° C/W @ 600 LFM
5 Watts	13.43	7.22	4.85	4.05
10 Watts	12.23	7.08	4.67	3.96
15 Watts	11.26	7.24	4.70	3.92

CUSTOMER DRAWING
SPECIFICATIONS ARE SUBJECT TO CHANGE WITHOUT NOTICE

ITEM	DESCRIPTION	QTY	SCALE
1	MOUNTING CLIP	1	DO NOT SCALE
2	HEAT SINK	1	
3	INTERFACE	1	

tyco / Electronics Attleboro Falls Massachusetts 02763

UNLESS OTHERWISE SPECIFIED TO LEFANCES ARE: .XX ± .XXX ± .XXXX ± ANGLES ± *

DRAWN BY: E.TAO DATE: 02/18/04 MATERIAL: SEE NOTE

ENGINEER: B.P DATE: 02/23/04 FINISH: SEE NOTE

FILENAME: PROJECT: SYSTEM:

CONFIDENTIAL PROPERTY OF TYCO ELECTRONICS NOT TO BE DISCLOSED TO OTHERS REPRODUCED OR USED FOR ANY PURPOSES EXCEPT AS AUTHORIZED IN WRITING BY AN AUTHORIZED OFFICIAL OF TYCO. MUST BE RETURNED TO TYCO ON DEMAND, ON COMPLETION OF ORDERS OR OTHER PURPOSES FOR WHICH LENT.

TITLE: 21mm HEATSINK ASSEMBLY (HTS144-P)

DIMENSIONS ARE IN: INCHES SCALE: 2:1 PART NO.: 2-1542000-8 SHEET: 1 OF 1

TYPED ANGLE PROJECTION: SIZE: A DWG. NO. C-2-1542000-8 REV: A

D
C
B
A

D
C
B
A