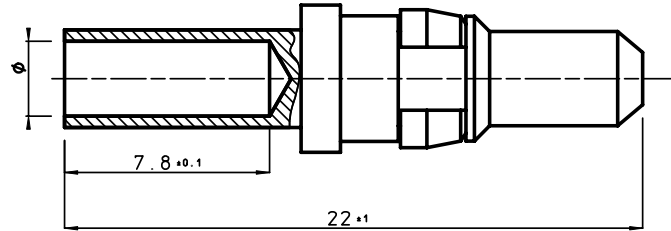


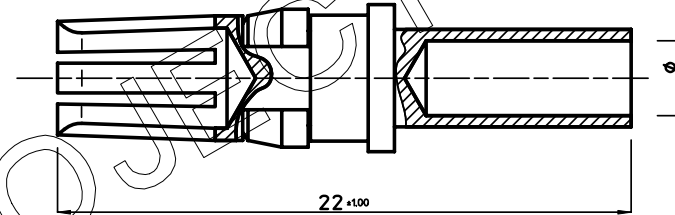
GEN. ST.	01	02	03	04	05	06	07	08	0D	50	60	70	80	90																	
INT. ST.	10	11	12	13	14	18	20	31	32	33	34	38	39	40	42	43	44	45	46	48	56	70	72	73	75	76	81	82	83	84	88

REV.	DATE	DESCRIPTION	BY	C'K'D'
A	2001-09-14	CONVERSION REVISION 03	KN	
B	2005-11-21	105-0246	ALEX B	BKP
C	2006-07-03	106-0095	VIVEK	BKP

RM**PIE5---LF
PIN CONTACT



RC**PIE5---LF
SOCKET CONTACT



CATALOGUE NUMBER	WIRE SIZE			MAX. CURRENT	STRIP LENGTH (MM)	CRIMP TOOLS		
	AWG	MM ²	Ø			M10S1		M50F012
						DIESET	STOP	ADAPTOR
R*16PIE5--LF	16	1.3	1.7	10 A	6.4	S16	SL19E1	N° 1
R*12PIE5--LF	12	4.0	2.8	20 A	8.5	S16E1	SL19E1	N° 1
R*10PIE5--LF	10	6.0	3.5	30 A	8.5	S16E2	SL19E1	N° 3

PLATING CODE

PERFORMANCE CHARACTERISTICS

- INSERTION FORCE: 10 N MAX.
- WITHDRAWAL FORCE: 1.6 N MIN.
- CONTACT RESISTANCE: < 1mΩ UNDER 10 A

NOTE: 1. FOR MISSING INFO SEE DRAWING BS,C,201624,028
2. THE PRODUCT (LF) MEETS EUROPEAN UNION DIRECTIVES AND OTHER COUNTRY REGULATIONS AS DESCRIBED IN GS-22-008

THIS IS OUR EXCLUSIVE PROPERTY. IT IS NOT TO BE COPIED, REPRINTED OR DISCLOSED TO A THIRD PARTY, NOR USED FOR MANUFACTURING WITHOUT OUR WRITTEN CONSENT, AND HAS TO BE RETURNED TO US IN CASE OF NO USAGE

DIT IS ONZE EIGENDOM EN MAG NOCH NAGEMAAKT, HERDRUKT, OVERGEMAAKT AAN DERDEN, NOCH VOOR FABRIKATIE GEBRUIKT WORDEN, ZONDER ONZE SCHRIFTELIJKE TOELATING. BIJ NIET GEBRUIK IS TERUGGEGANG VERPLICHT.

1DEC ± 0,2 2DEC ± 0,1 ANGLES ± 1°	APPR. DRAFT CHECKED	DATE 1993-05-05	SIGN. W. P.	MALE/FEMALE POWER CONTACTS (CRIMP CONTS.)
WE RESERVE THE RIGHT TO CHANGE DIMENSIONS OR REQUIREMENTS WITHOUT PRIOR NOTICE.	PROD. MGR. PR. ENG. MGR. PR. MGT. MGR.			CAT. No. R---PIE5---LF
ALL DIMENSIONS IN MM	REFERENCES		FCJ www.fciconnect.com	SCALE 5/1
				BS,C,201624,001
				C
				DRAWING No. CUSTOMER DRAWING REVISION