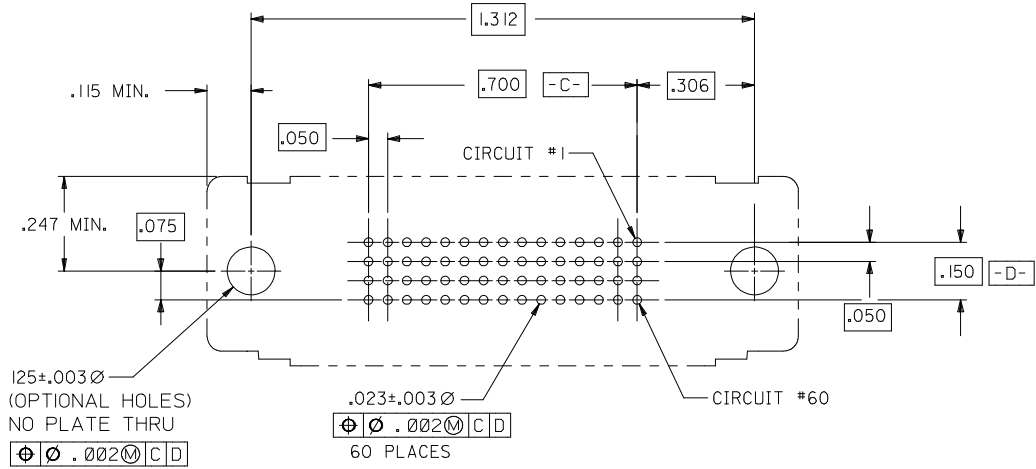


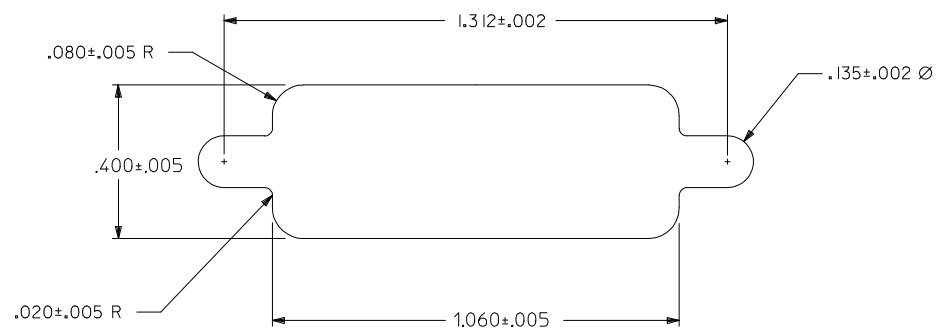
- NOTES:
- 1) MATERIALS:
    - HOUSING: GLASS FILLED LCP (LIQUID CRYSTAL POLYMER), UL 94V-0, COLOR: BLACK.
    - MOLDED STICK: GLASS FILLED LCP (LIQUID CRYSTAL POLYMER), UL 94V-0, COLOR: BLACK.
    - FEMALE TERMINAL: HIGH PERFORMANCE COPPER ALLOY
    - OUTER SHELL: DEEP DRAWN STEEL.
  - 2) PLATING:
    - TERMINAL: 30 MICROINCHES / 0.76 MICROMETER MIN. GOLD IN SELECTIVE AREA, 100 MICROINCHES / 2.54 MICROMETERS MIN. TIN IN SELECTIVE AREA, OVER NICKEL UNDERPLATE OVERALL.
    - OUTER SHELL: 100 MICROINCHES / 2.54 MICROMETER MIN. BRIGHT NICKEL OVER COPPER FLASH (OPTIONAL).
  - 3) CONFORMS TO PRODUCT SPECIFICATION PS-70928.
  - 4) PARTS PACKAGED PER PK-70873-0291.
  - 5) THREAD GAUGE MAY REQUIRE UP TO 1 IN.-LB. OF TORQUE DURING GAUGING PROCESS.
  - 6) PART COMPLIES WITH CLASS B OF COSMETIC SPECIFICATION PS-45499-002

SECTION X-X

<b>MOD PANEL CUT-OUT</b> EC NO: UCP2012-0335 DRW:DMORGAN 2011/08/15 CHKD:MPHOFF 2014/04/11 APPR:SMILLER 2014/05/12	QUALITY SYMBOLS 	GENERAL TOLERANCES (UNLESS SPECIFIED)		DIMENSION STYLE		SCALE	DESIGN UNITS	THIRD ANGLE PROJECTION			
				INCH ONLY		4:1	METRIC				
				mm	INCH	DRAWN BY	DATE	SALES ASSY, .050 PITCH 60 CKT LFH VERTICAL I/O M3 SHIELDED RECEPTACLE 			
				4 PLACES ± ---	± ---	BSMART	2005/02/14				
		3 PLACES ± ---	± .010	CHECKED BY	DATE						
		2 PLACES ± ---	± ---	BBARKER	2005/02/14						
		1 PLACE ± ---	± ---	APPROVED BY	DATE	DOCUMENT NO. SD-70928-002 SHEET NO. 1 OF 2					
		0 PLACE ± ---	± ---	SMILLER	2005/02/14						
		ANGULAR ±1/2°		MATERIAL NO.							
		DRAFT WHERE APPLICABLE MUST REMAIN WITHIN DIMENSIONS		70928-0092							
				SIZE C		THIS DRAWING CONTAINS INFORMATION THAT IS PROPRIETARY TO MOLEX INCORPORATED AND SHOULD NOT BE USED WITHOUT WRITTEN PERMISSION					



RECOMMENDED P.C.B. LAYOUT  
COMPONENT SIDE



RECOMMENDED PANEL CUT-OUT

<b>SEE SHEET 1</b> EC NO: UCP2012-0335 DRWN:DMORGAN 2011/08/15 CHKD:MPOFF 2014/04/11 APPR:SMILLER 2014/05/12	QUALITY SYMBOLS ▽=0 ▽=0 ▽=0	GENERAL TOLERANCES (UNLESS SPECIFIED)		DIMENSION STYLE <b>INCH ONLY</b>		SCALE <b>4:1</b>	DESIGN UNITS <b>METRIC</b>	THIRD ANGLE PROJECTION		
		4 PLACES ± --- ± ---	3 PLACES ± --- ± .010	DRAWN BY BSMART	DATE 2005/02/14	TITLE <b>SALES ASSY, .050 PITCH 60 CKT LFH VERTICAL I/O M3 SHIELDED RECEPTACLE</b>				
		2 PLACES ± --- ± ---	1 PLACE ± --- ± ---	CHECKED BY BBARKER	DATE 2005/02/14	APPROVED BY SMILLER				
		0 PLACE ± --- ± ---	ANGULAR ±1/2°	DRAFT WHERE APPLICABLE MUST REMAIN WITHIN DIMENSIONS		MATERIAL NO. <b>70928-0092</b>	DOCUMENT NO. <b>SD-70928-002</b>	SHEET NO. <b>2 OF 2</b>		