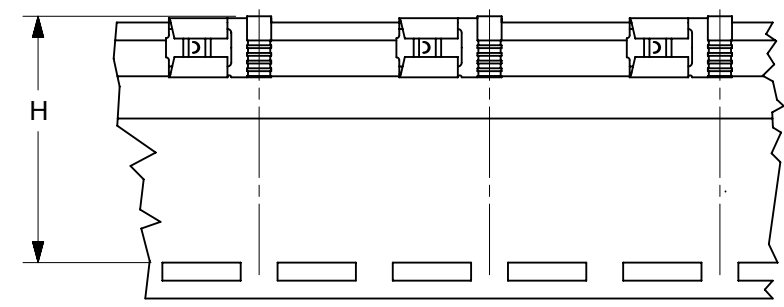
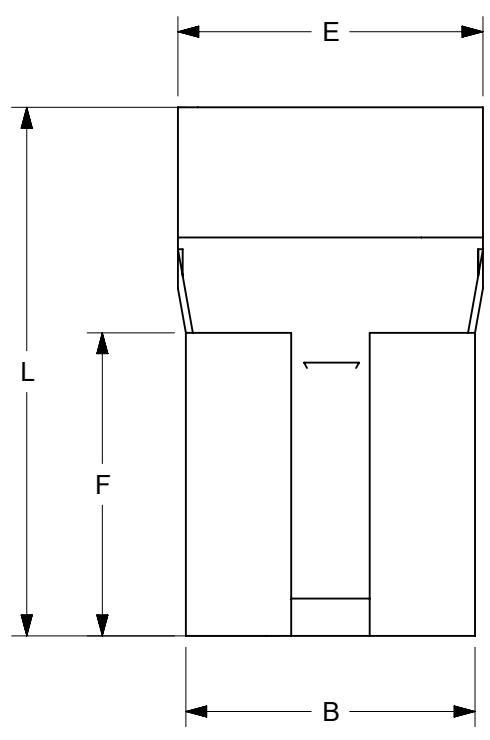
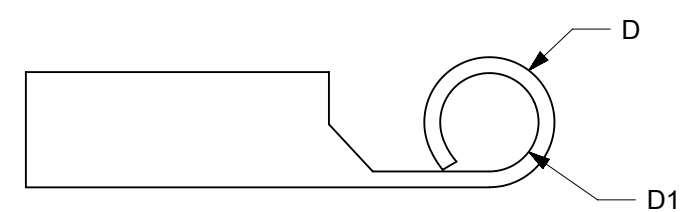
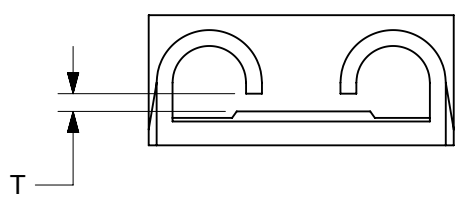


MATERIAL NUMBER LOOSE PIECE	MATERIAL NUMBER TAPE MOUNTED	WIRE RANGE AWG	T MAX	B MAX	F MAX	L MAX	E MAX	D1 MIN	D MAX	H NOMINAL
192030375	192030525	16-14	.036/.90	.302/7.66	.331/8.40	.587/14.92	.311/7.90	.083/2.10	.134/3.40	1.255/31.88
192030380	-	12-10	.036/.90	.302/7.66	.331/8.40	.619/15.72	.378/9.60	.149/3.78	.193/4.90	-



PARTS ON TAPE



- NOTES:
1. MATERIAL: STEEL. 016/0.40 THICK REF
 2. PLATING: NICKEL PLATED WITH OPTIONAL COPPER FLASH UNDERPLATING, IS ALLOWED FOR IMPROVED ADHESION.
 3. WIRE RANGE: SEE CHART
 4. PART IS ROHS COMPLIANT.
 5. AMBIENT OPERATING TEMPERATURE UP TO 900 °F (483 °C).
 6. PART IS ROHS COMPLIANT.

D1

THIS DRAWING CONTAINS INFORMATION THAT IS PROPRIETARY TO MOLEX ELECTRONIC TECHNOLOGIES, LLC AND SHOULD NOT BE USED WITHOUT WRITTEN PERMISSION											
FUNCTIONAL SYMBOLS		DIMENSION UNITS		SCALE		CURRENT REV DESC: REMASTERED IN ECTR AND UPDATED NOTE					
▽ _A = 0		IN/MM		NTS		EC NO: 708789 DRWN: PAWANC 2022/05/12 CHKD: DMYRICK 2022/06/01 APPR: JMACNEIL 2022/06/02 INITIAL REVISION: DRWN: ASAYDEH 05/12/05 APPR: RDEROSS 05/12/05					
▽ _B = 0		GENERAL TOLERANCES (UNLESS SPECIFIED)									
▽ _C = 0		MM		INCH							
DIVISIONAL SYMBOLS		4 PLACES ±		±		PRODUCT CUSTOMER DRAWING DOCUMENT NUMBER: SD-19203-024 DOC TYPE: PSD DOC PART: 001 REVISION: D1					
		3 PLACES ±		±							
		2 PLACES ±		±							
		1 PLACE ±		±		MATERIAL NUMBER: SEE CHART CUSTOMER: GENERAL MARKET SHEET NUMBER: 1 OF 1					
		0 PLACES ±		±							
		ANGULAR TOL ± °		± °							
DRAFT WHERE APPLICABLE MUST REMAIN WITHIN DIMENSIONS				THIRD ANGLE PROJECTION		DRAWING		SERIES		MATERIAL NUMBER	
						B-SIZE		19203		SEE CHART	