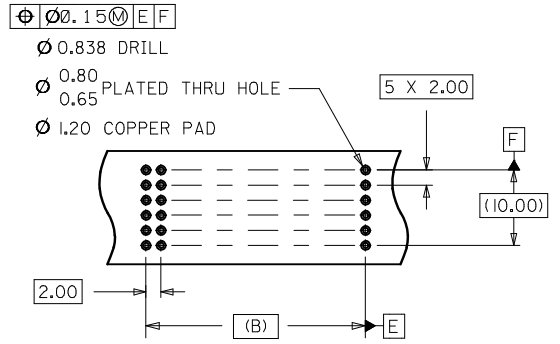
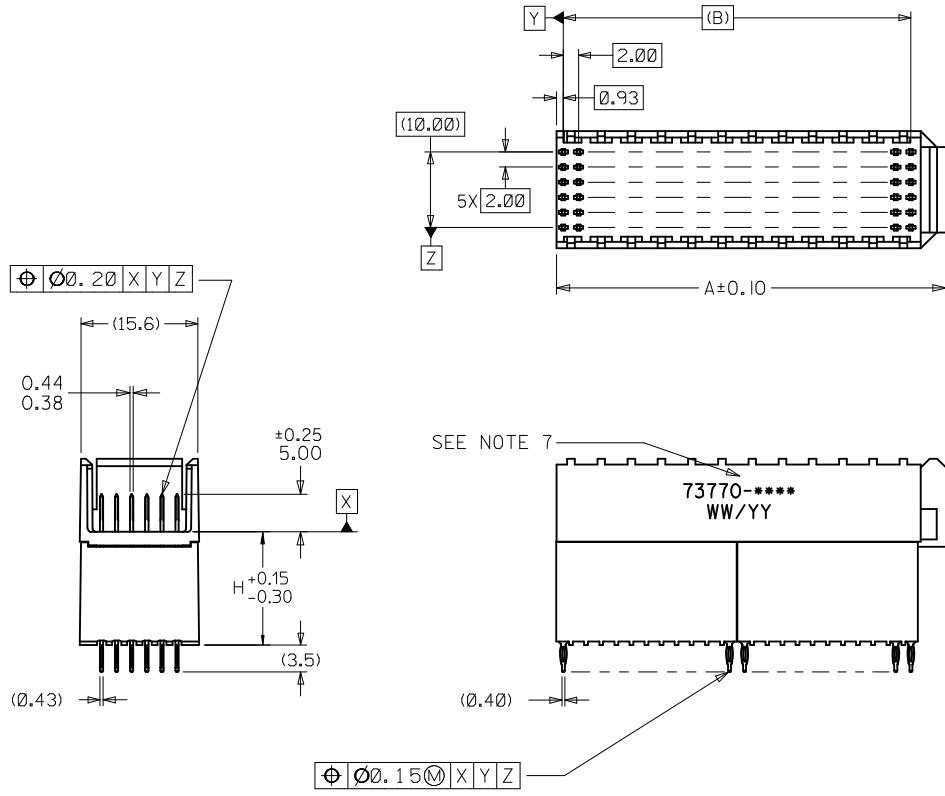


ASSEMBLY P/N	TOTAL NUMBER OF SIGNAL CONTACTS	DIM "A"	DIM "B"	DIM "H"	PACKAGING SPECIFICATION
73770-0100	72	27.6	22.00	15.05	PK-70873-1873
73770-0200	72	27.6	22.00	6.05	PK-70873-0875
73770-0300	72	27.6	22.00	10.05	PK-70873-0871
73770-1100	144	51.6	46.00	15.05	PK-70873-1873
73770-1200	144	51.6	46.00	6.05	PK-70873-0875
73770-1300	144	51.6	46.00	10.05	PK-70873-0871



- NOTES:
1. MATERIALS: HOUSING-LIQUID CRYSTAL POLYMER (LCP), GLASS FILLED, UL94-0, COLOR: BLACK, TERMINAL - PHOSPHOR BRONZE
  2. FINISH: SELECTIVE GOLD (Au) IN CONTACT AREA, 0.76 micrometer THICKNESS; SELECTIVE MATTE TIN (Sn) ON TAILS, NICKEL (Ni) OVERALL.
  3. THIS PART CONFORMS TO MOLEX PRODUCT SPECIFICATION PS-73780-999.
  4. THIS PART CONFORMS TO MOLEX COSMETIC SPECIFICATION PS-45499-002 CLASS C.
  5. RECOMMENDED PCB THICKNESS: 2.50 MINIMUM.
  6. SEE TABLE FOR PACKAGING SPECIFICATION.
  7. PARTS MARKED WITH PART NUMBER AND DATE CODE APPROXIMATELY WHERE SHOWN.

<b>MODIFY NOTE 2</b> EC NO: UCP2014-4192 DRWNR:MHIPPLE 2013/08/23 CHKDR:MWOLFE 2013/08/23 APPR:SMILLER 2014/06/09	QUALITY SYMBOLS 	GENERAL TOLERANCES (UNLESS SPECIFIED)		DIMENSION STYLE <b>MM ONLY</b>		SCALE <b>2:1</b>	DESIGN UNITS <b>METRIC</b>	THIRD ANGLE PROJECTION		
		4 PLACES	± ---	± ---	DRAWN BY	DATE	TITLE <b>SALES ASSEMBLY HDM          BACKPLANE STACKING MOD          CLOSED END OPT PRESSFIT</b>			
		3 PLACES	± ---	± ---	CHECKED BY	DATE				
		2 PLACES	± 0.05	± ---	SREED	1997/03/07	<b>molex</b>			
1 PLACE	± 0.10	± ---	APPROVED BY	DATE						
0 PLACE	± ---	± ---	CBIXLER	1997/03/07	MATERIAL NO. <b>SEE TABLE</b>		DOCUMENT NO. <b>SD-73770-001</b>	SHEET NO. <b>1 OF 1</b>		
DRAFT WHERE APPLICABLE MUST REMAIN WITHIN DIMENSIONS			SIZE 	THIS DRAWING CONTAINS INFORMATION THAT IS PROPRIETARY TO MOLEX INCORPORATED AND SHOULD NOT BE USED WITHOUT WRITTEN PERMISSION						