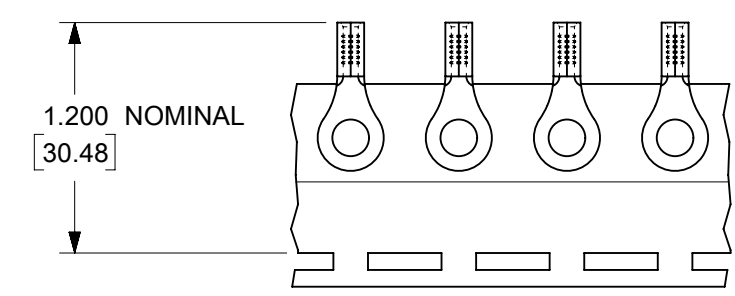
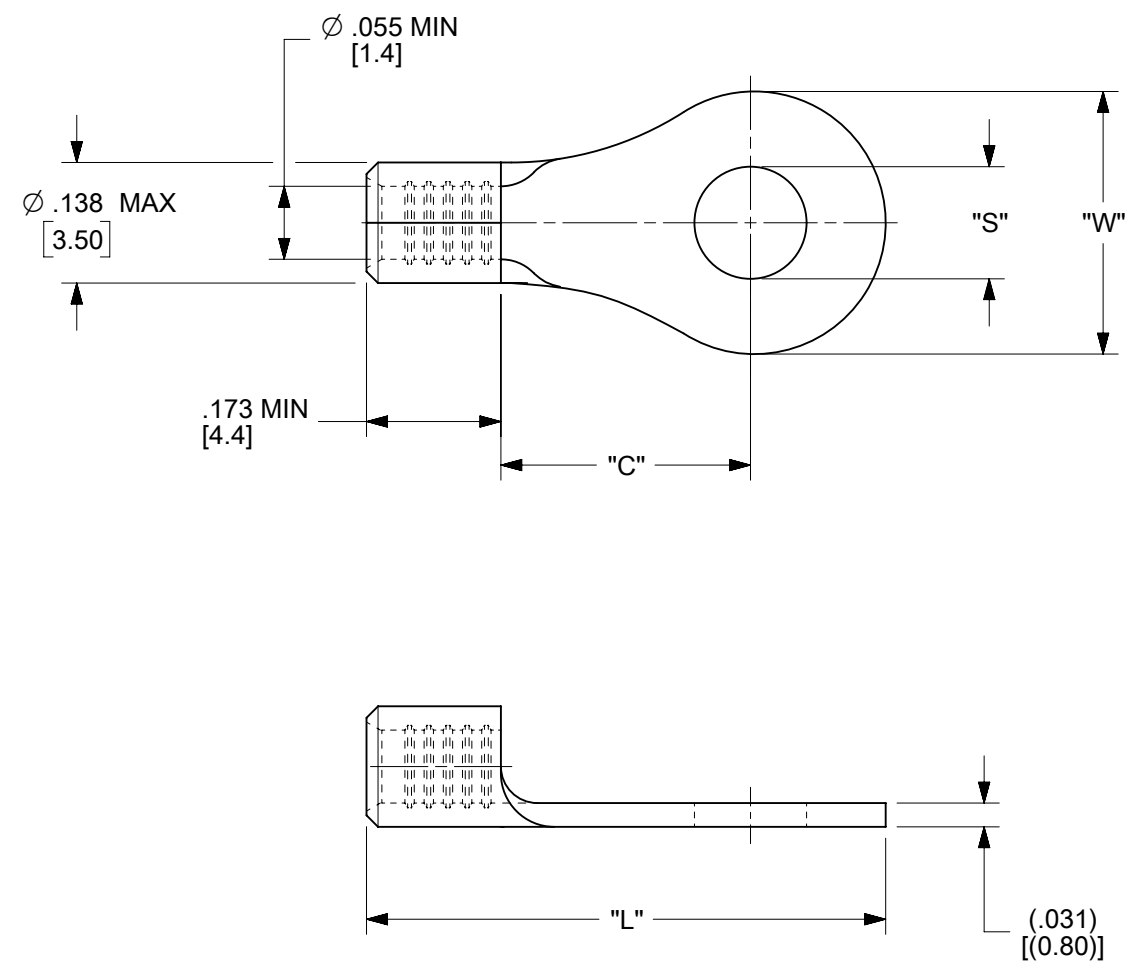


LOOSE PIECE		TAPE MOUNTED		STUD SIZE	DIMENSIONS			
MATERIAL NO.	ENG. NO.	MATERIAL NO.	ENG. NO.		"S" ±.007/0.18	"W" MAX	"C" MIN	"L" MAX
192030486	A-S-122-14	192030005	A-S-122-14T	1/4"	.256/6.50	.467/11.86	.427/10.85	.894/22.71
192030483	A-S-132-06	192030011	A-S-132-06T	06	.146/3.71	.270/6.86	.238/6.05	.611/15.52
192030485	A-S-132-08	192030014	A-S-132-08T	08	.169/4.29	.270/6.86	.238/6.05	.611/15.52
192030387	A-S-133-10	192030016	A-S-133-10T	10	.209/5.31	.325/8.26	.270/6.86	.666/16.92



PARTS ON TAPE

- NOTES:
1. MATERIAL: STEEL
 2. WIRE SIZE: 22-18 AWG (0.25-1.5 MM²)
 3. FINISH: NICKEL PLATED WITH OPTIONAL COPPER FLASH UNDERPLATING, IS ALLOWED FOR IMPROVED ADHESION.
 4. PARTS ARE ROHS COMPLIANT.
 5. AMBIENT OPERATING TEMPERATURE UP TO 900 °F (483 °C).

C1

THIS DRAWING CONTAINS INFORMATION THAT IS PROPRIETARY TO MOLEX ELECTRONIC TECHNOLOGIES, LLC AND SHOULD NOT BE USED WITHOUT WRITTEN PERMISSION										
FUNCTIONAL SYMBOLS	DIMENSION UNITS	SCALE	CURRENT REV DESC: REMASTERED IN ECTR AND UPDATED NOTE							
	IN/MM	4:1	<p>molex</p> <p>RING TONGUE TERMINAL, 22-18 AWG, KRIMPTITE, 900 DEG F (483 DEG C)</p> <p>PRODUCT CUSTOMER DRAWING</p>							
GENERAL TOLERANCES (UNLESS SPECIFIED)										
DIVISIONAL SYMBOLS	4 PLACES	±	MM	INCH	EC NO: 708789	2022/05/12	<p>DOCUMENT NUMBER</p> <p>SD-19203-036</p>			
	3 PLACES	±	MM	INCH	DRWN: PAWANC	2022/06/01				
	2 PLACES	±	MM	INCH	CHKD: DMYRICK	2022/06/02	DOC TYPE	DOC PART	REVISION	
	1 PLACE	±	MM	INCH	APPR: JMACNEIL	2022/06/02	PSD	001	C1	
	0 PLACES	±	MM	INCH	INITIAL REVISION:	2006/09/22	<p>MATERIAL NUMBER</p> <p>SEE CHART</p>			
ANGULAR TOL	±	°	°	DRWN: EHILE	2006/09/22	<p>CUSTOMER</p> <p>GENERAL MARKET</p>				
DRAFT WHERE APPLICABLE MUST REMAIN WITHIN DIMENSIONS		THIRD ANGLE PROJECTION		DRAWING	SERIES				SHEET NUMBER	
		B-SIZE		19203						