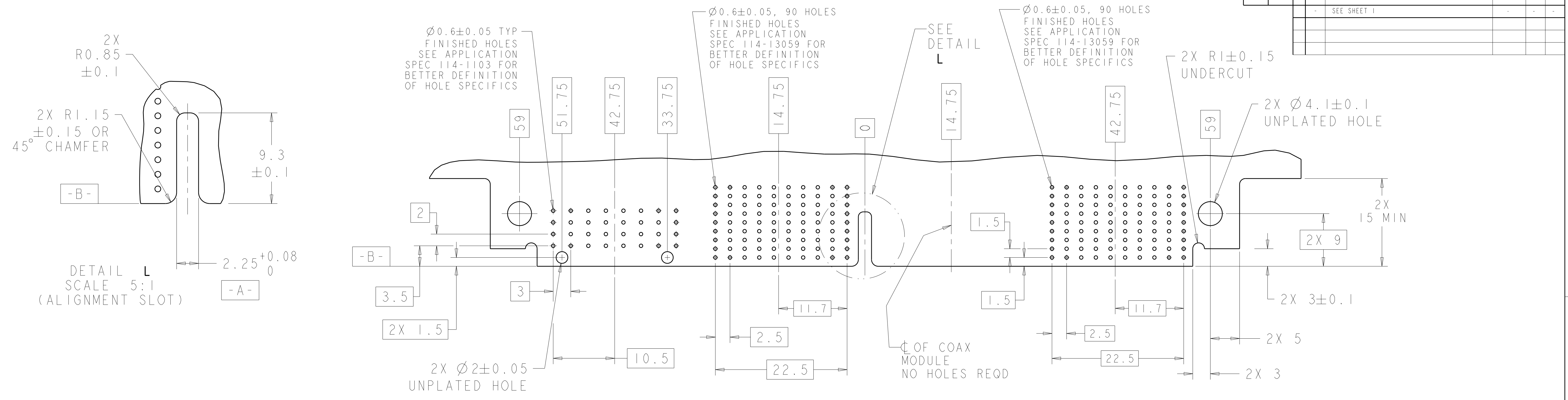
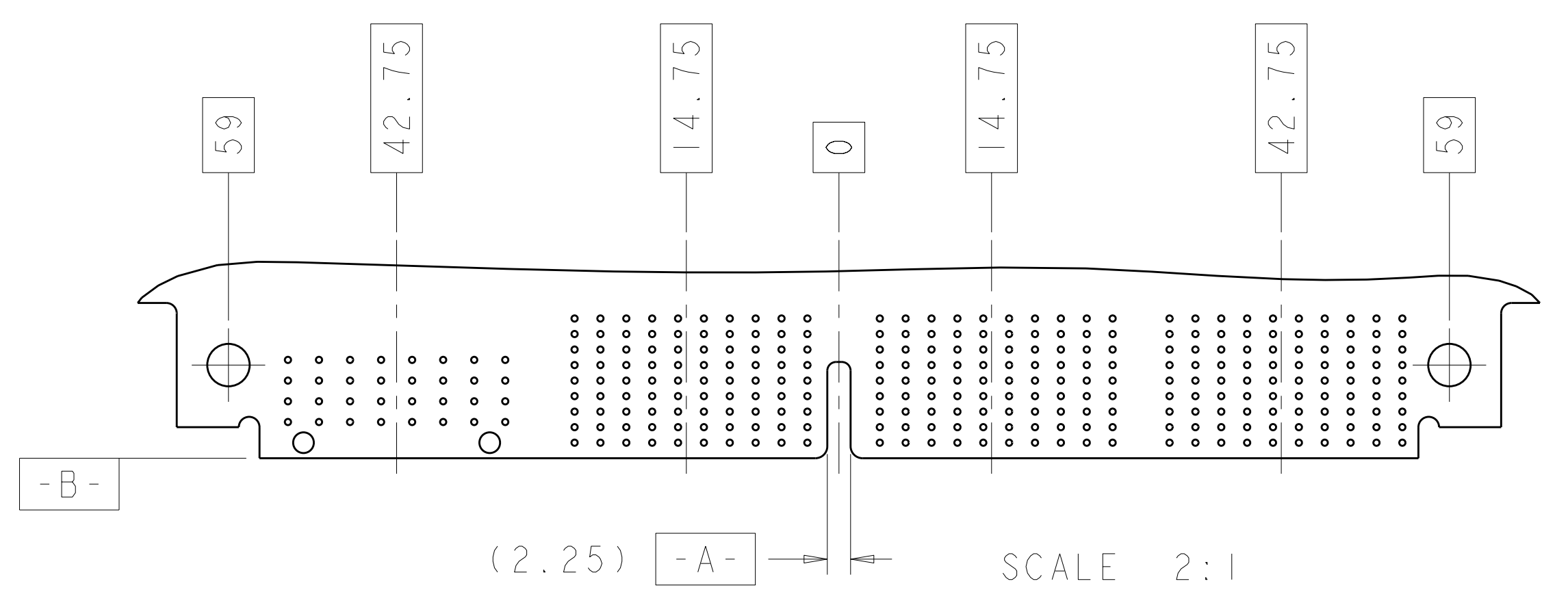
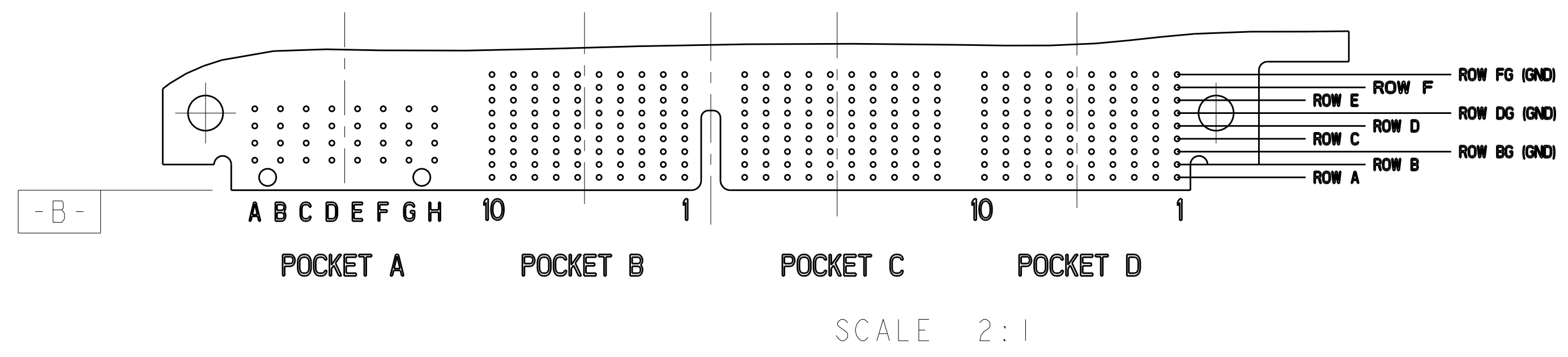




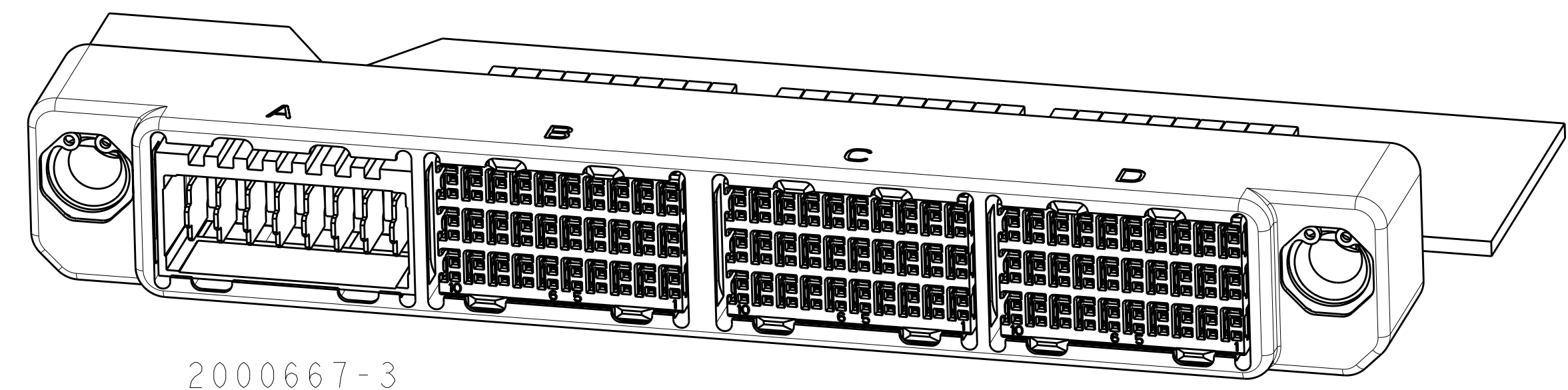
| LOC         | DIST | REV | DATE | BY | APPD |
|-------------|------|-----|------|----|------|
| -           | -    | 1   | -    | -  | -    |
| REVISIONS   |      |     |      |    |      |
| DESCRIPTION |      |     | DATE | BY | APPD |
| SEE SHEET 1 |      |     | -    | -  | -    |



RECOMMENDED PC BOARD HOLE LAYOUT  
 AS VIEWED FROM TOP OF PC BOARD  
 NO SPECIFIC PART NUMBER SHOWN



RECOMMENDED PC BOARD HOLE LAYOUT  
 AS VIEWED FROM TOP OF PCB  
 2000667-3 SHOWN (3 HM-Zd MODULES  
 AND 1 UPM MODULE)



|                        |  |  |  |   |  |  |  |
|------------------------|--|--|--|---|--|--|--|
| DIMENSIONS:<br>mm<br>  |  | TOLERANCES UNLESS OTHERWISE SPECIFIED:<br>9 PLC ±.<br>1 PLC ±.<br>5 PLC ±.<br>4 PLC ±.<br>ANGLES ±.<br>FINISH ±. |  | DWN: Brent D. Yohn<br>CHK: HUNG T. NGUYEN<br>APVD: CHONG YI<br>DATE: 1 DEC 2009<br>NAME: DAUGHTER CARD CONNECTOR, HIGH SPEED RUGGEDIZED (HSR), 4 BAY, UNSEALED, RIGHT ANGLE<br>SIZE: A11<br>CAGE CODE: 00779<br>DRAWING NO: 2000667<br>CUSTOMER DRAWING |  | Tyco Electronics<br>Harrisburg, PA 17105-3608<br>TDC2009<br>Tyco Electronics |  |
| MATERIAL: .            |  | WEIGHT: .  |  | SCALE: 1:1  |  | SHEET 2 OF 2   |  |
| AMP 4805 REV 31MAR2000 |  |  |  |   |  | REV D  |  |