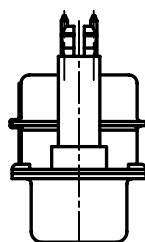
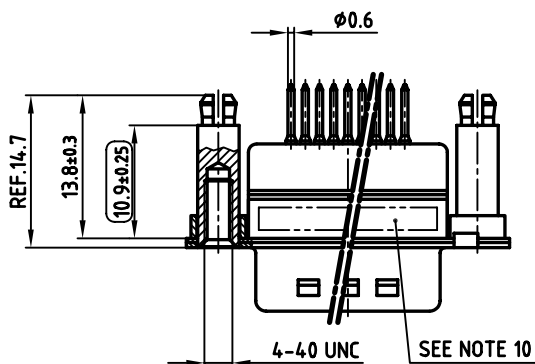
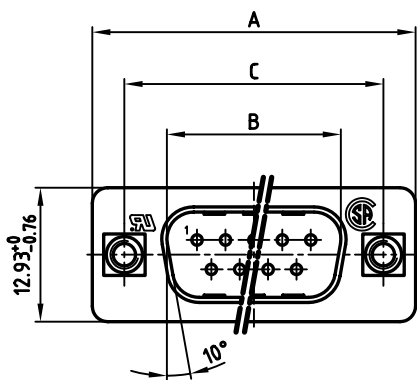
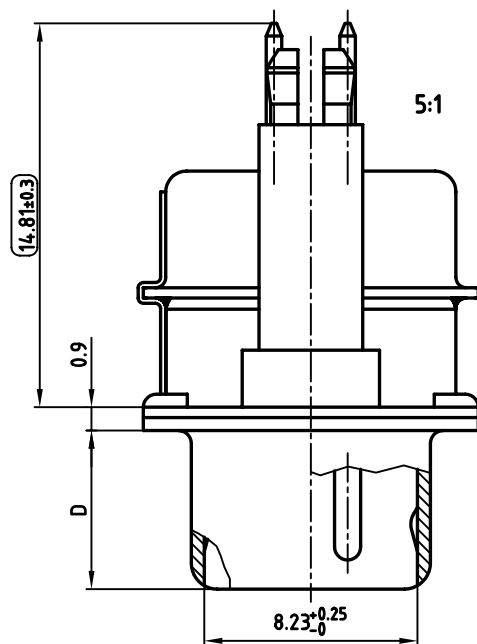


used for: D-SUB π FILTER

POS.	A -0.76	B $+0.25$	C	D -0.3	PART-NO.
9	31.19	16.79	25.00 $+0.12$ -0.13	6.12	241A26360X
15	39.52	25.12	33.30 $+0.15$ -0.1	6.12	241A26370X
25	53.42	38.84	47.04 ± 0.13	5.99	241A26380X
37	69.70	55.30	63.50 ± 0.13	5.99	241A26390X



NOTES:

- METALSHELLS: STEEL; min. 320 μ " TIN
- INSULATORS: PBT GF UL 94 V-0, BLACK
- CONTACTS: COPPER ALLOY
PLATING: 8 μ " HARD GOLD OVER min. 50 μ " NICKEL
- THREADED SPACER CLIP: COPPER ALLOY; min. 200 μ " TIN over 80 μ " NICKEL
PCB-HOLE: $\phi 3.1 \pm 0.1$; PCB THICKNESS 1.6mm
- COLLAR: COPPER ALLOY; min. 200 μ " TIN over 80 μ " NICKEL
- P.C.B. HOLE DRILLINGS ON DRAWING NO.: 16K11UA
- CAPACITANCE: 2 x 180pF $\pm 20\%$
- DIELECTRIC WITHSTANDING VOLTAGE: 300 VDC
- MAXIMUM TORQUE VALUE FOR THREAD: 6" LBS
- CONNECTOR IS PART MARKED: PART-NO. CONEC ABC
- = CHECK DIMENSION

Directive 2002/95/EC
RoHS-Compliant

APPROVAL * FREIGABE * DEBLOCAGE * AUTORIZACION * APPROVAL	
CUSTOMER APPROVAL DATE:	
NAME:	TITLE:
COMPANY NAME:	
APPROVAL * FREIGABE * DEBLOCAGE * AUTORIZACION * APPROVAL	

THIS DRAWING MAY NOT BE COPIED OR REPRODUCED IN ANY WAY, AND MAY NOT BE PASSED ON TO A THIRD PARTY, WITHOUT WRITTEN PERMISSION. OWNERSHIP AND COPYRIGHT OF CONEC Gmbh DO NOT ALTER CAD DRAWING BY HAND

rev.	description	date	name

tolerance		scale:	2:1 (5:1)		
	dim. in mm	material:	SEE NOTES		
2004	date	name	D-SUB π FILTER MALE 9-37pos. SOLDER PIN STRAIGHT with threaded spacer clip		
drawn	02.09.	Lehmenkühler			
appd.	02.09.	Mickenbecker			
norm	DIN 41652				
d-old			dwg no:	AutoCAD 2004	DIN-A
			24K1A563	3	sh: 1/1
part no:			SEE TABLE		