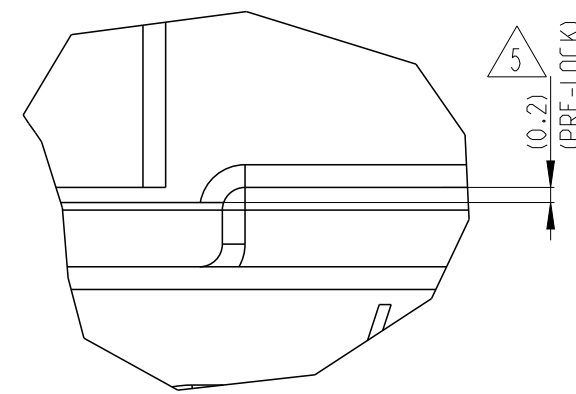
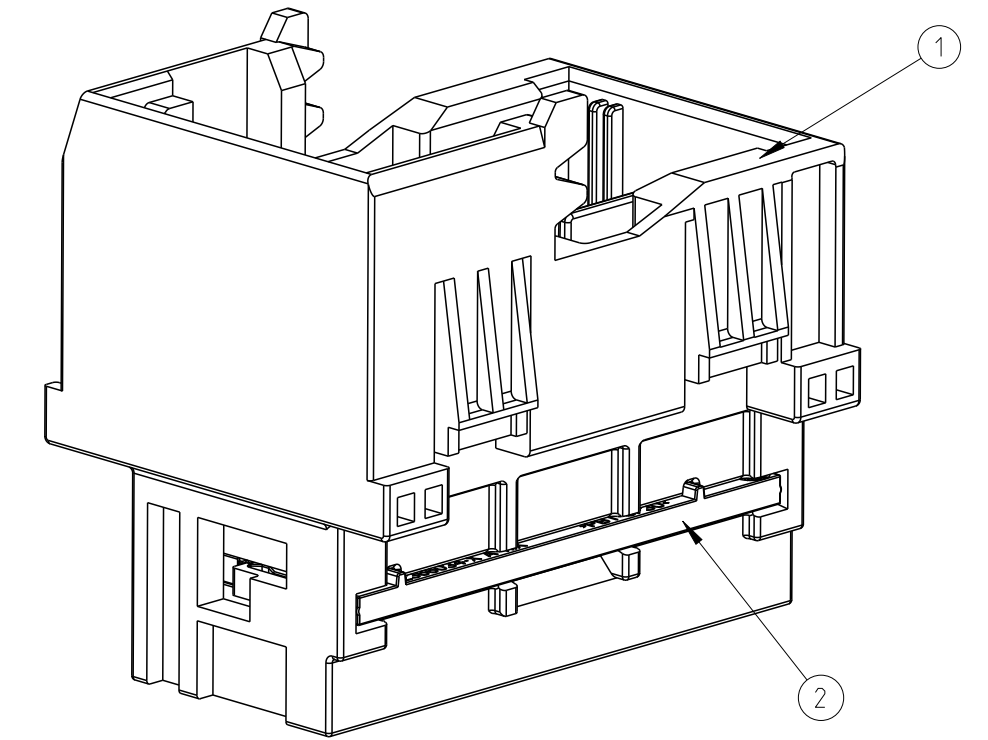
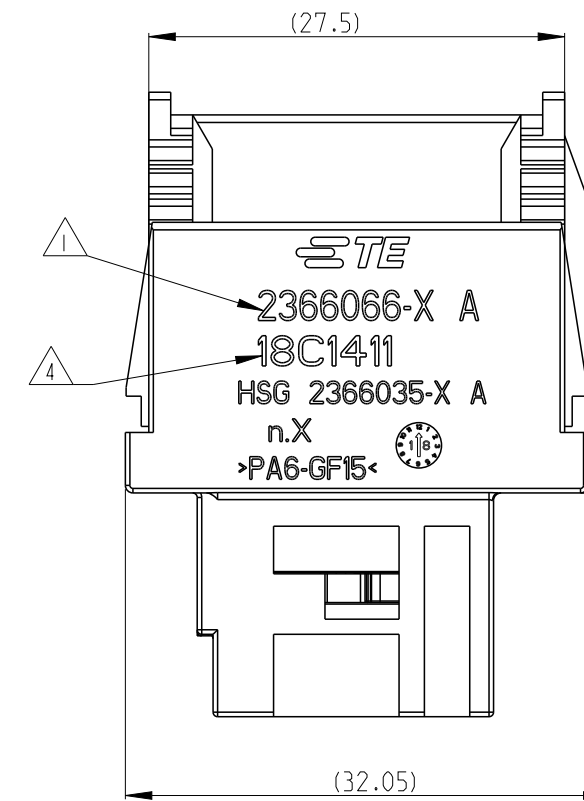
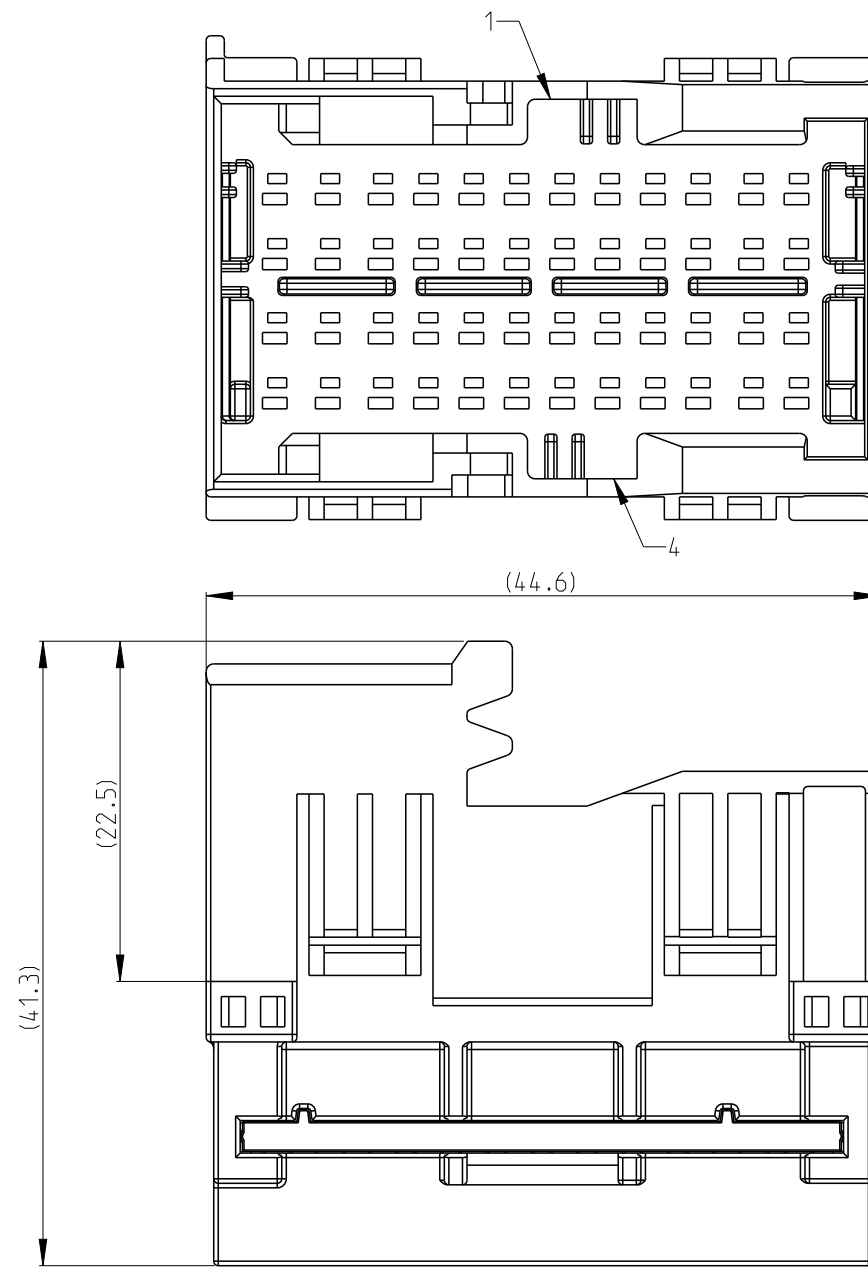
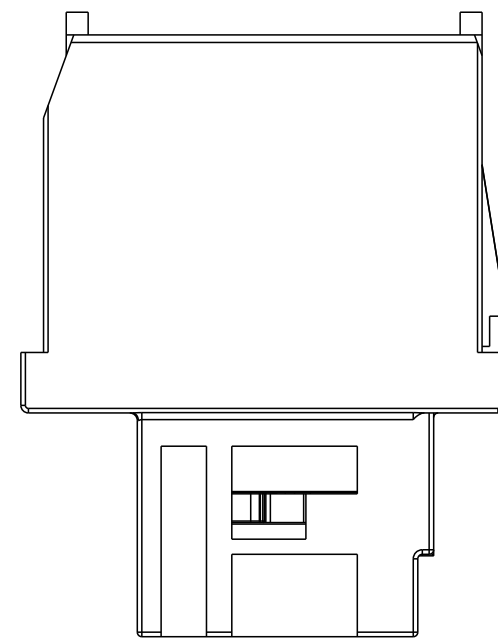


2366066-1 SHOWN AS

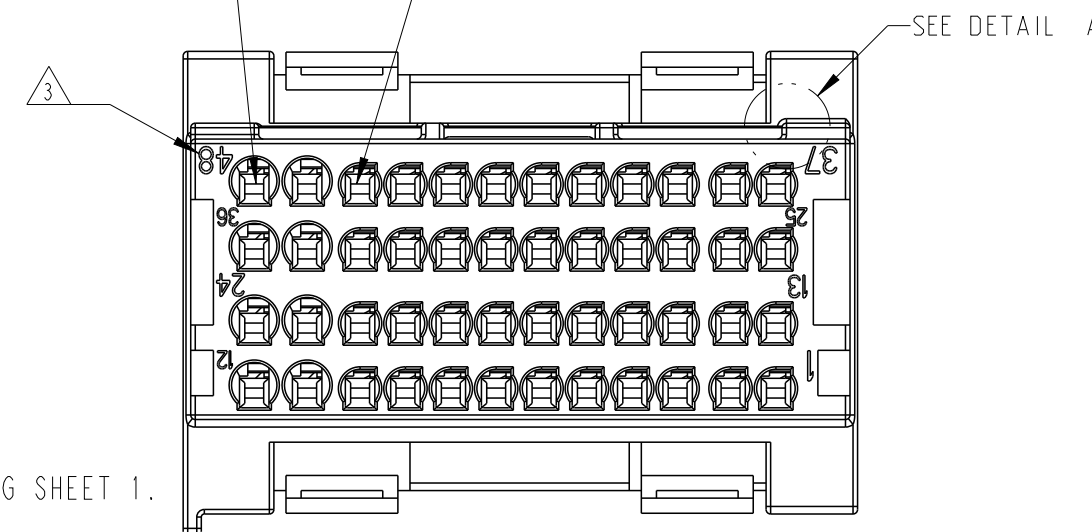
REVISIONS					
P	LTR	DESCRIPTION	DATE	DWN	APVD
A		INITIAL RELEASE DRAWING	15JAN2020	V.T	I.Y
A1		REVISE	15JAN2021	S.Z	I.Y
B		REVISED PER PCN -E-21-004518	16APR2021	S.Z	Z.Z
B1		REVISE ECN-22-186969	28NOV2022	W.W	Z.Z



DETAIL A  
SCALE 10:1

8Pos FOR  
WIRE SIZE 1.5(mm<sup>2</sup>) max.  
INSULATION Ø2.4 mm max.

40Pos FOR  
WIRE SIZE 1.0(mm<sup>2</sup>) max.  
INSULATION Ø2.1 mm max.



NOTES:

- 1 ASSEMBLY PN AND PART REVISION:  
2366066-X A  
X: X=1, 2, 3, 4 FOR VARIOUS CODE.  
A: PART REVISION, DETAIL SEE TABLE ON THE DRAWING SHEET 1.
2. MATERIAL: SEE DRAWING TABLE
- 3 IDENTIFICATION FOR CABLE PINOUT.
- 4 THE ASSEMBLY DATE CODE: IDENTIFIES THE YEAR, MONTH, DAY AND HOUR OF ASSEMBLY.  
SUCH AS :18C1411  
18: YEAR, FIRST AND SECOND DIGITS (18=2018)  
C: MONTH, THIRD DIGIT, EXCLUDING "1", A=JAN, B=FEB, C=MARCH...H=AUGUST, J=SEPTEMBER...  
14: DAY, FOURTH AND FIFTH DIGITS(14=14th DAY)  
11: HOUR, SIXTH AND SEVENTH DIGITS(11=11AM)
- 5 VERIFY THE SECOND LOCK SEATED ON PRE-LOCK POSITION FOR DELIVERY.  
PULL SECOND LOCK TO PRE-LOCK BEFORE TERMINAL INSERTION IN CASE OF SECOND LOCK BEING HIT TO END-LOCK POSITION.
6. APPLICABLE TERMINAL PART NUMBERS AND WIRE SIZE SHOWN AS BELOW FOR RECOMMEND,  
CONSULT TE CONNECTIVITY FOR MORE APPLICATION INFORMATION.

B1

1418760-1	TIN	0.50-0.75	Ø1.40-Ø1.90
5-1418760-1	TIN	0.50-0.75	Ø1.40-Ø1.90
1418762-1	TIN	1.0-1.5	Ø1.90-Ø2.40
TERMINAL PN	TERMINAL PLATING	WIRE SIZE (MM2)	INSULATION WIRES OD(MM)

7. THIS TAB MATES WITH 2366036-X PLUG (X=1, 2, 3, 4 FOR RELEVANT CODE).

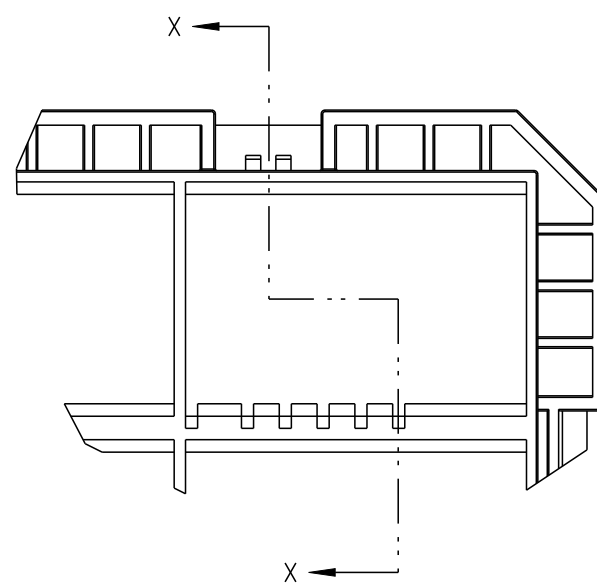
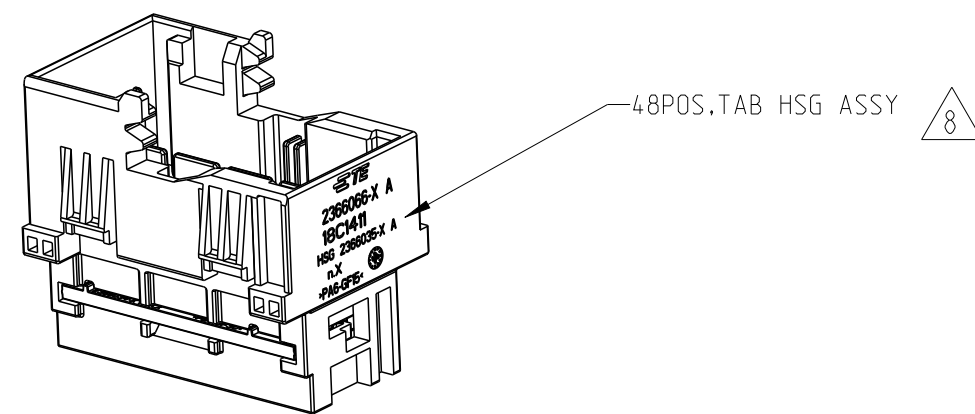
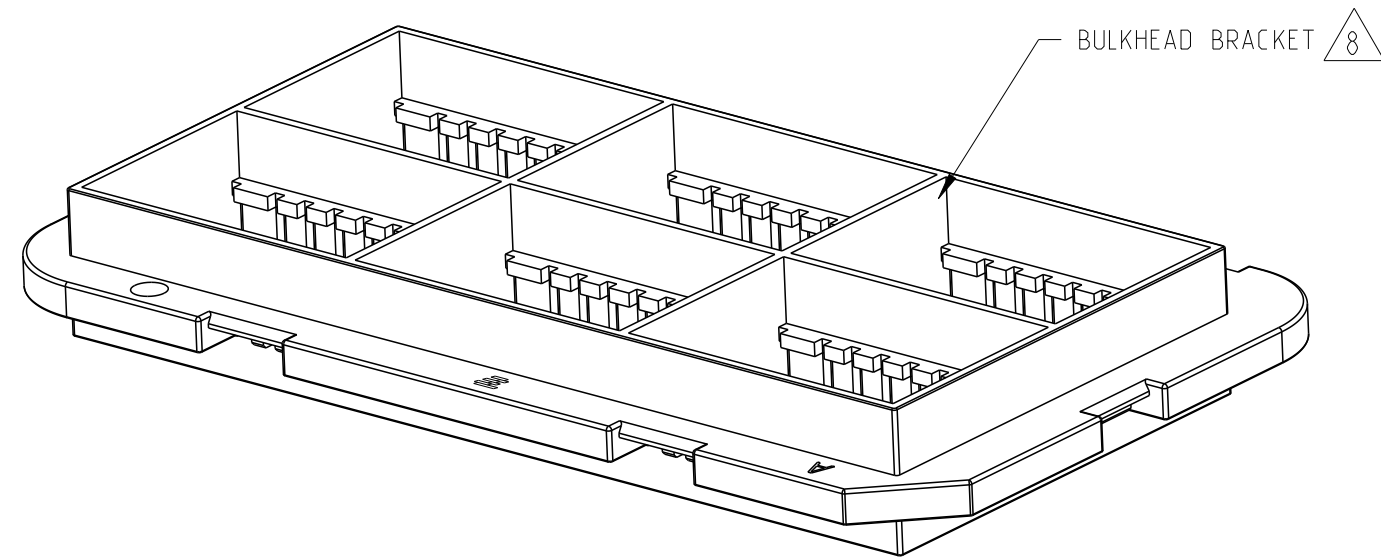
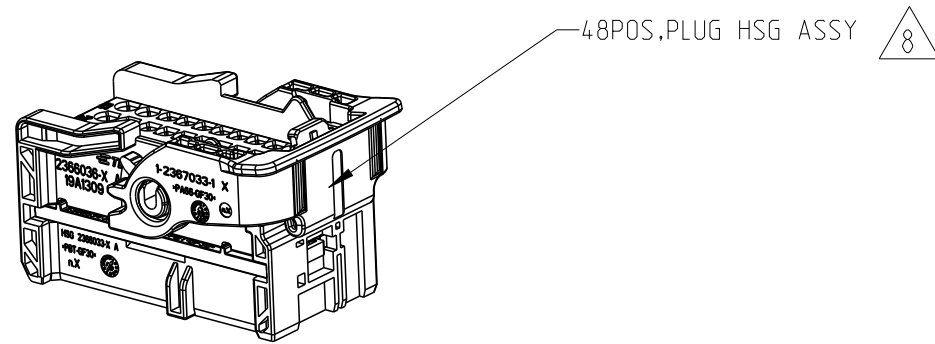
CODING A PN: 2366066-1	CODING B PN: 2366066-2	CODING C PN: 2366066-3	CODING D PN: 2366066-4

1	1	1	1	YELLOW	PBT-GF30	SECOND LOCK	2
1				BLUE	PA6-GF15	HOUSING.CODE D	1
	1			GREEN	PA6-GF15	HOUSING.CODE C	
		1		GREY	PA6-GF15	HOUSING.CODE B	
			1	BLACK	PA6-GF15	HOUSING.CODE A	
QTY. REQUEST PER ASSY				COLOR	MATERIAL	DESCRIPTION	ITEM NO
19.61	19.61	19.61	19.61	WEIGHT OF EACH ASSY NO. (g)			
B	B	B	B	REVISION OF EACH ASSY NO.			
2366066-4	2366066-3	2366066-2	2366066-1	TE ASSEMBLY PN			

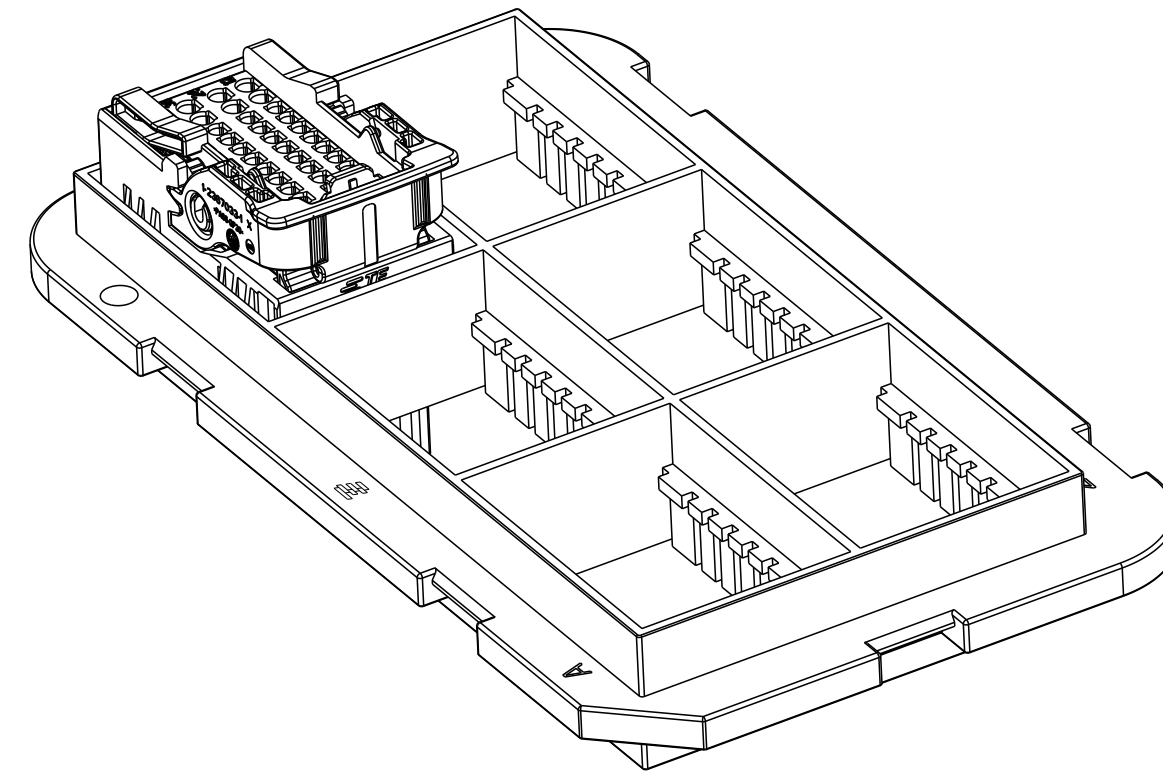
THIS DRAWING IS A CONTROLLED DOCUMENT.		DWN V. TANG	03JAN2020	TE Connectivity
DIMENSIONS: mm		CHK E. JIANG	03JAN2020	
TOLERANCES UNLESS OTHERWISE SPECIFIED:		APVD J. YIN	03JAN2020	
		PRODUCT SPEC 108-32618	NAME 48POS, MCON 1.2 LL, TAB HSG ASSY UNSEALED, CONNECTOR	
MATERIAL		APPLICATION SPEC 114-32365	SIZE A2	CAGE CODE 00779
		FINISH	WEIGHT	DRAWING NO C-2366066
			RESTRICTED CUSTOMER	RESTRICTED TO
			SCALE 2:1	SHEET 1 OF 2
				REV B1

P	LTR	DESCRIPTION	DATE	DWN	APVD
-	-	SEE SHEET 1	-	-	-

APPLICATION AS SHOWN



BULKHEAD BRACKET INTERFACE



SCALE 1:1

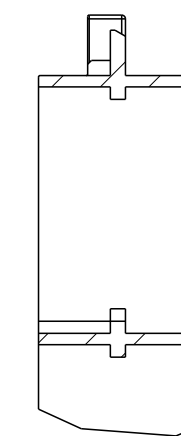
NOTES:

8 .48POS.TAB AND PLUG HSG ASSY MATES WITH BULKHEAD BRACKET.

48POS. HSG ASSY P/N: MALE SIDE:2366066-\*.FEMALE SIDE:2366036-\*

BULKHEAD BRACKET P/N: 2050752-1 OR FOLLOW DIMENSIONS ON INTERFACE.

IF THERE ARE ANY OTHER APPLICATIONS FOR THIS BRACKET, PLEASE CONFIRM WITH TE PRODUCT ENGINEER FIRST.



SECTION X-X

THIS DRAWING IS A CONTROLLED DOCUMENT.		DWN V. TANG 03JAN2020		NAME			
DIMENSIONS: mm		CHK E. JIANG 03JAN2020		48POS, MCON 1.2 LL, TAB HSG ASSY UNSEALED, CONNECTOR			
		APVD J. YIN 03JAN2020		SIZE	CAGE CODE	DRAWING NO	RESTRICTED TO
TOLERANCES UNLESS OTHERWISE SPECIFIED:		PRODUCT SPEC	108-32618	114-32365	A2100779	C-2366066	RESTRICTED CUSTOMER
0 PLC ±0.5 1 PLC ±0.3 2 PLC ±0.20 3 PLC ±0.100 4 PLC ±0.0500 ANGLES ±5° FINISH -		APPLICATION SPEC	114-32365	WEIGHT	-	SCALE	2:1
MATERIAL		RESTRICTED CUSTOMER	SHEET		2 OF 2	REV	B1