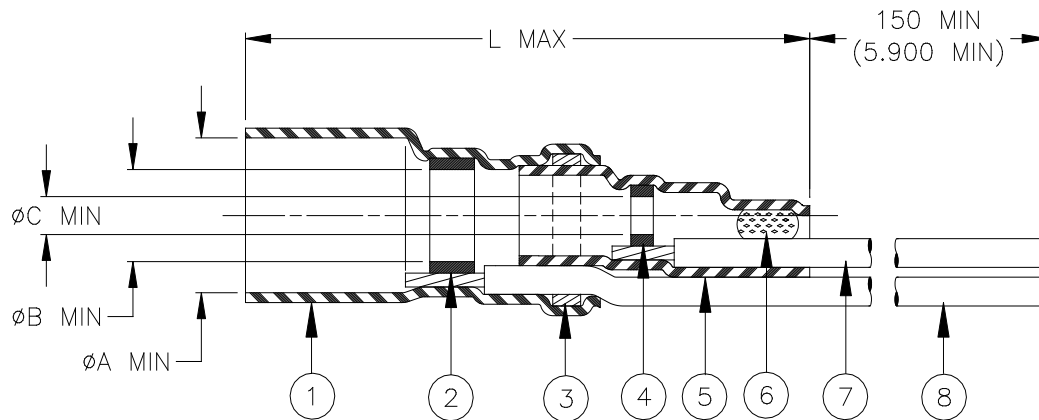


## CUSTOMER DRAWING



Product Name	Component Dimensions				"GA" Wire Gauge (AWG)	Cable Dimensions				
	L max	φA min	φB min	φC min		φD	φE	φF min	G±0.5 (G±0.02)	M±0.5 (M±0.02)
B-040-20-N	30.0 (1.180)	4.40 (0.175)	2.80 (0.110)	1.60 (0.060)	20	1.70	1.50	0.30 (0.012)	16.0 (0.630)	6.0 (0.235)
B-040-22-N					22	(0.065)	(0.060)			
B-040-24-N					24	to	to			
B-040-26-N					26	4.40	2.80			
B-040-28-N					28	(0.175)	(0.110)			
B-040-30-N					30					

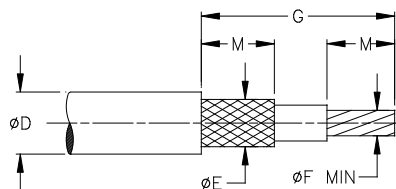
### MATERIALS

1. & 5. INSULATION SLEEVE: Heat-shrinkable, radiation cross-linked modified polyvinylidene fluoride. Transparent blue.
2. & 4. SOLDER PREFORMS WITH FLUX:  
SOLDER: TYPE Sn63 per ANSI J-STD-006.  
FLUX: TYPE ROL0 per ANSI J-STD-004.
3. & 6. MELTABLE RINGS: Thermally stabilized thermoplastic.
7. CONDUCTOR LEAD: RAYCHEM 55A0111 in accordance with MIL-W-22759/32. See table for AWG. ETFE insulated, stranded tin plated copper.  
Color: white.
8. GROUND LEAD: RAYCHEM 55A0111 in accordance with MIL-W-22759/32. See table for AWG. ETFE insulated, stranded tin plated.  
Copper.  
Color: blue.

### APPLICATION

1. The parts covered by this document are for use in terminating the primary conductor and the braided shield of a coaxial cable having tin or silver-plated conductor and shield, rated for at least 125° C and meeting the dimensional requirements listed.
2. Parts will meet the requirements of Raychem Specification RT-1404 when installed per Raychem RPIP-500-03.
3. Temperature range: -55°C to +150°C.

For best results, prepare the cable as shown:



		<b>Raychem</b> Products	TITLE: <b>COAXIAL SOLDER SLEEVE DEVICE WITH PRE-INSTALLED STRANDED WIRES</b>			
UNLESS OTHERWISE SPECIFIED DIMENSIONS ARE IN MILLIMETERS. INCHES DIMENSIONS ARE BETWEEN BRACKETS.			DOCUMENT NO.: B-040-GA-N			
TOLERANCES: 0.00 N/A 0.0 N/A 0 N/A	ANGLES: N/A  ROUGHNESS IN MICRON	TE Connectivity reserves the right to amend this drawing at any time. Users should evaluate the suitability of the product for their application.	DOCUMENT REVISION: <b>E</b>	REVISION ISSUE DATE: <b>01-DEC-2021</b>		
DRAWN BY: MALLIKA.D	DATE: 19-NOV-2021	CAGE CODE: 06090	ECN NUMBER: ECN-21-128737	SCALE: None	SIZE: A	SHEET: 1 of 1