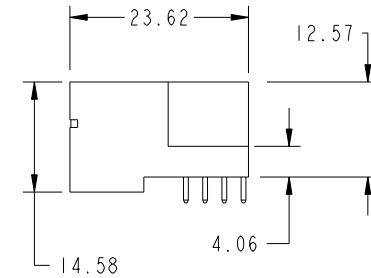
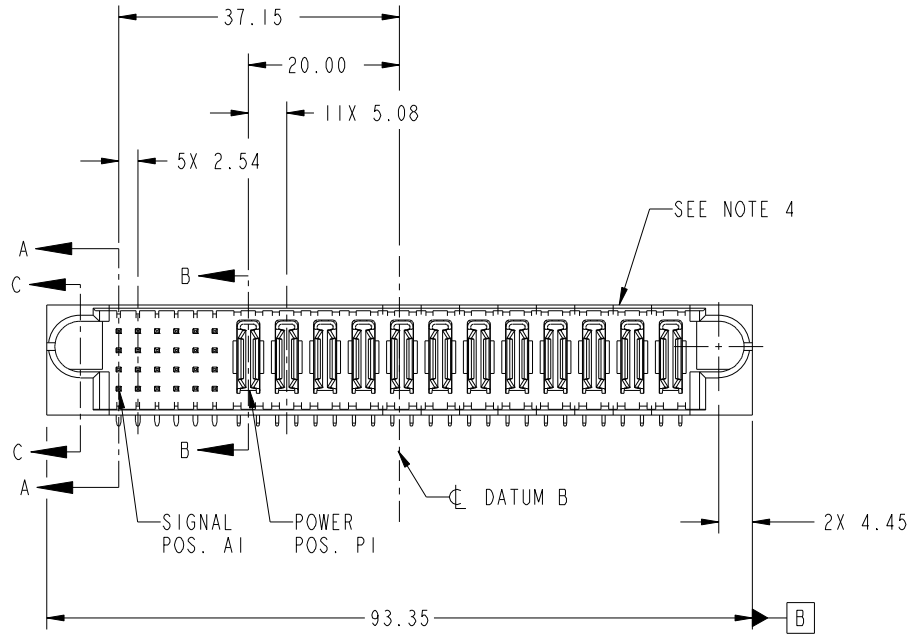


Tous droits strictement reserves. Reproduction ou communication a des tiers interdite sous quelque forme que ce soit sans autorisation ecrite du proprietaire. Propriete de c.FCI. Droits de reproduction FCI.

All rights strictly reserved. Reproduction or issue to third parties in any form whatever is not permitted without written authority from the proprietor. Property of FCI. Copyright FCI.



| | | | | | | | | | | | | | | | | | | | | | |
|--------------------------------------|--------------------------|--------|---------|--------|--------|----|----|-------|----|----|----|----|----|----|----|----|----|-----|-----|----|-----|
| PRODUCT NO. 51939-375-- NOTE 3 | ROWS D C B A | SIGNAL | | | | | | POWER | | | | | | | | | | | | E2 | |
| | | E1 | 1 | 2 | 3 | 4 | 5 | 6 | P1 | P2 | P3 | P4 | P5 | P6 | P7 | P8 | P9 | P10 | P11 | | P12 |
| | | UUUUUU | TTTTTTT | SSSSSS | RRRRRR | PA | PA | PA | PA | PA | PA | PA | PA | PA | PA | PA | PA | PA | PA | PA | PA |



| CODE | DIM "M" MATING LENGTH | CONTACT TYPE |
|------|-----------------------|--------------|
| U | [6.86] | SIGNAL |
| T | [6.86] | SIGNAL |
| S | [6.86] | SIGNAL |
| R | [6.86] | SIGNAL |
| PA | [N/A] | POWER |
| F | [5.59] | SIGNAL |

| | | | | | | | | | | | |
|-------------|----------------|-----|----------|----------|----------------------|---------------------------------------|--|------------------|--|--------------------|--|
| mat'l code | | | | SEE NOTE | | tolerances unless otherwise specified | | CUSTOMER | | FCI | |
| lir | ecn no. | dr | date | linear | 0.X ±0.5 | COPY | | projection | | www.fciconnect.com | |
| A | DG08-0203 | W D | 08/04/08 | angles | 0.XX ±0.25 | MM | | title | | 24S + 12P | |
| | | | | | 0.XXX ±0.1 | scale | | product family | | PwrBlade | |
| | | | | dr | 0° ±2° | 1:1 | | size | | 213 | |
| | | | | enr | Warren Du 07/28/08 | | | dwg no | | 51939-375 | |
| | | | | enr | Jerome Chen 07/28/08 | | | sheet | | 1 of 4 | |
| | | | | chr | Gary Hsieh 07/28/08 | | | cage code | | 2856 | |
| | | | | appd | Joseph Hsia 07/28/08 | | | STAT | | Released | |
| sheet index | revision sheet | A 1 | A 2 | A 3 | A 4 | | | Printed: Dec 20, | | 2010 | |

A

B

A

B

1 | 2

Pro/E

PDM: Rev: A

STAT: Released

Printed: Dec 20, 2010

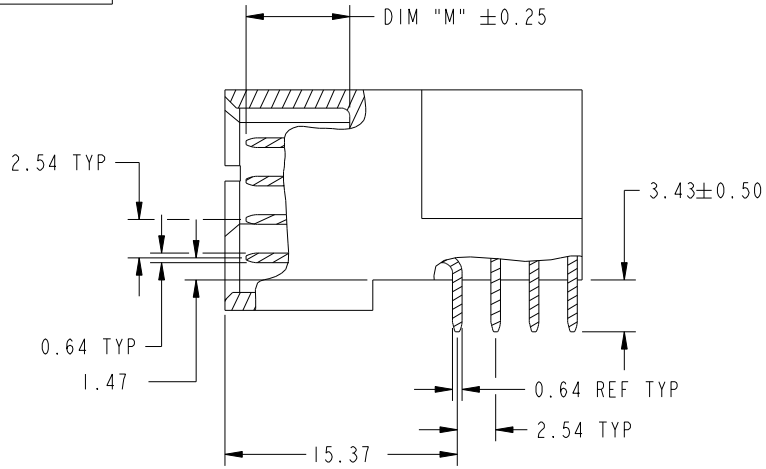
Tous droits strictement reserves. Reproduction ou communication a des tiers interdite sous quelque forme que ce soit sans autorisation ecrite du proprietaire. Propriete de c FCI. Droits de reproduction FCI.

All rights strictly reserved. Reproduction or issue to third parties in any form whatever is not permitted without written authority from the proprietor. Property of FCI. Copyright FCI.

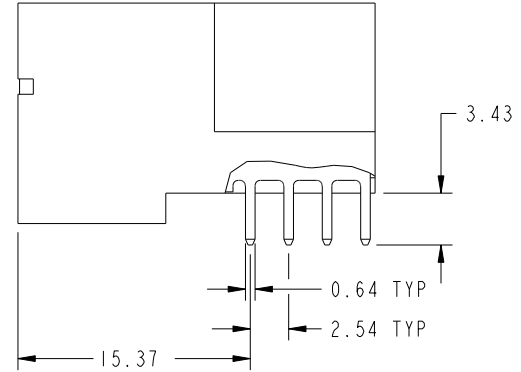


PRODUCT NUMBER

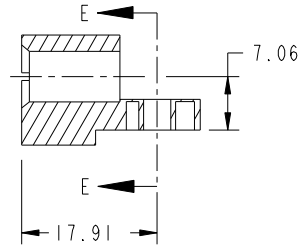
51939-375__
NOTE: 3



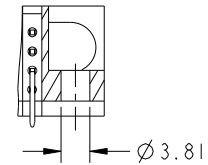
BROKEN-OUT SECTION A-A
SCALE 2:1



BROKEN-OUT SECTION B-B
SCALE 2:1



SECTION C-C



PARTIAL SECTION E-E

| | | | | | | | | | | | |
|-------------|---------|----------------|------|----------|-------------|---------------------------------------|------------|-----------|---------------------------|------------------------|--|
| mat'l code | | | | SEE NOTE | | tolerances unless otherwise specified | | CUSTOMER | | www.fciconnect.com | |
| lir | ecn no. | dr | date | linear | 0.X ± 0.5 | | COPY | | title | | |
| A | | | | | 0.XX ± 0.25 | | projection | | 24S + 12P | | |
| | | | | | 0.XXX ± 0.1 | | | | RIGHT ANGLE SOLDER HEADER | | |
| | | | | angles | 0° ± 2° | | | | product family | | |
| | | | | dr | Warren Du | 07/28/08 | MM | | PwrBlade | | |
| | | | | enr | Jerome Chen | 07/28/08 | | | code | | |
| | | | | chr | Gary Hsieh | 07/28/08 | 1:1 | | 213 | | |
| | | | | appd | Joseph Hsia | 07/28/08 | A | | sheet | | |
| sheet index | | revision sheet | | | | | | 51939-375 | | 2 of 4 | |
| | | | | | | | | A | | | |

cage code 28506

Pro/E

PDM: Rev: A

STATUS: Released

Printed: Dec 20, 2010

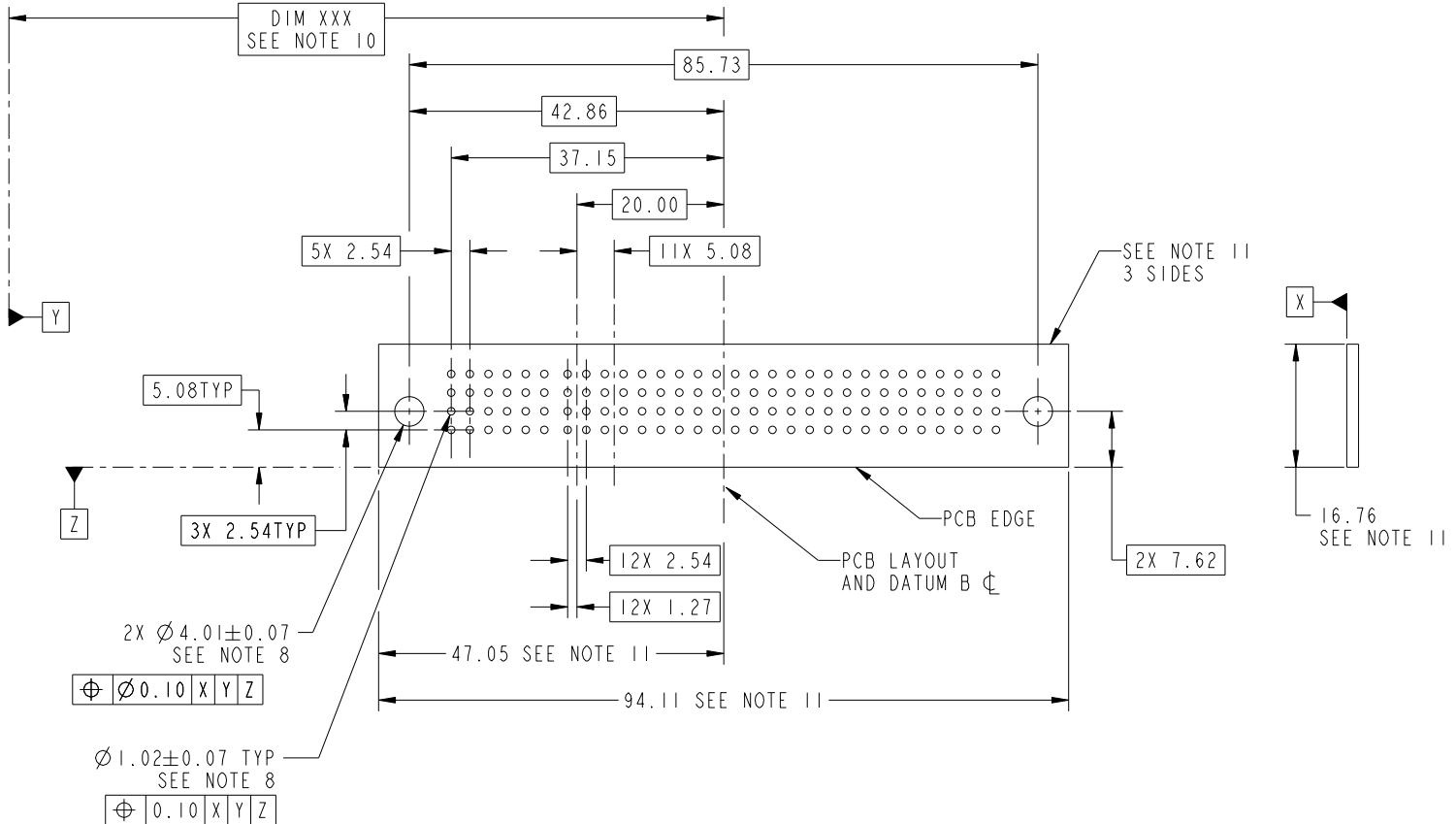
Tous droits strictement réservés. Reproduction ou communication a des tiers interdite sous quelque forme que ce soit sans autorisation écrite du propriétaire. Propriété de c.FCI. Droits de reproduction FCI.

All rights strictly reserved. Reproduction or issue to third parties in any form whatever is not permitted without written authority from the proprietor. Property of FCI. Copyright FCI.



PRODUCT NUMBER

51939-375__
NOTE: 3



RECOMMENDED PCB LAYOUT

| | | | | | | | | | |
|-------------|----------------|----------|------|---------------------------------------|----------------------|------------|--|---------------------------|--|
| mat'l code | | SEE NOTE | | tolerances unless otherwise specified | | CUSTOMER | | www.fciconnect.com | |
| lir | ecn no. | dr | date | linear | 0.X ±0.5 | COPY | | title | |
| A | | | | | 0.XX ±0.25 | projection | | 24S + 12P | |
| | | | | angles | 0.XXX ±0.1 | | | RIGHT ANGLE SOLDER HEADER | |
| | | | | | 0° ±2° | | | product family | |
| | | | | dr | Warren Du 07/28/08 | MM | | PwrBlade | |
| | | | | enr | Jerome Chen 07/28/08 | scale | | code | |
| | | | | chr | Gary Hsieh 07/28/08 | 1:1 | | 213 | |
| | | | | appd | Joseph Hsia 07/28/08 | A | | 51939-375 | |
| sheet index | revision sheet | | | | | | | sheet 3 of 4 | |

cage code 2856

Tous droits strictement réservés. Reproduction ou communication a des tiers interdite sous quelque forme que ce soit sans autorisation écrite du propriétaire. Propriété de c.FCI. Droits de reproduction FCI.

All rights strictly reserved. Reproduction or issue to third parties in any form whatever is not permitted without written authority from the proprietor. Property of FCI. Copyright FCI.



1 | 2

3

4

PRODUCT NUMBER

51939-375__
NOTE: 3

NOTES:

1. DIMENSIONS AND TOLERANCES ARE IN ACCORDANCE WITH ASME Y14.5M, 1994 UNLESS OTHERWISE SPECIFIED.

CONNECTOR NOTES:

2. HOUSING MATERIAL: UL 94 V-0 GLASS FILLED HIGH-TEMP THERMOPLASTIC
POWER CONTACT MATERIAL: COPPER ALLOY
SIGNAL PIN MATERIAL: COPPER ALLOY

3. 51939-375; 51939-375LF PLATING SPEC. SEE PRINT:10064183

4. MANUFACTURER'S NAME, P/N, AND DATE CODE TO APPEAR ON THIS SURFACE.

5. PRODUCT SPECIFICATION GS-12-149.
APPLICATION SPECIFICATION BUS-20-067.

6. PACKAGED IN TRAYS.

PCB NOTES:

7. ALL HOLE DIAMETERS ARE FINISHED HOLE SIZE.

8. MOUNTING HOLES, WHERE APPLICABLE, ARE UNPLATED.

9. $\varnothing 1.151 \pm 0.025$ DRILLED HOLES PLATED WITH
0.008 MIN SnPb OR Sn OVER 0.03
TO 0.08 Cu PLATING TO ACHIEVE
 $\varnothing 1.02 \pm .07$ HOLE.

10. "DIM XXX" TO BE DETERMINED BY THE CUSTOMER.

11. CONNECTOR KEEP-OUT ZONE.

A

A

B

B

| | | | | | | | | | | |
|-------------|----------------|----------|------|---------------------------------------|-------------|----------|--------------|------------------------|---|--------|
| mat'l code | | SEE NOTE | | tolerances unless otherwise specified | | CUSTOMER | | www.fciconnect.com | | |
| ltr | ecn no. | dr | date | linear | 0.X ±0.5 | | COPY | | title 24S + 12P RIGHT ANGLE SOLDER HEADER | |
| A | | | | | 0.XX ±0.25 | | projection | | | |
| | | | | | 0.XXX ±0.1 | | | | | |
| | | | | angles | 0° ±2° | | | | product family PwrBlade | |
| | | | | dr | Warren Du | 07/28/08 | | | | code |
| | | | | enrg | Jerome Chen | 07/28/08 | size A | | | 213 |
| | | | | chr | Gary Hsieh | 07/28/08 | scale 1:1 | | | sheet |
| | | | | appd | Joseph Hsia | 07/28/08 | 51939-375 | | | 4 of 4 |
| sheet index | revision sheet | | | | | | | | | |

1 | 2

Pro/E

PDM: Rev: A

STAT: Released

Printed: Dec 20, 2010

cage code 2856

4