



EP10 POWER TRANSFORMER

AEP10-4619



- EP10 Transformer Package
- SMD Design
- Extended Operating Temperature Range: -40°C to +130°C

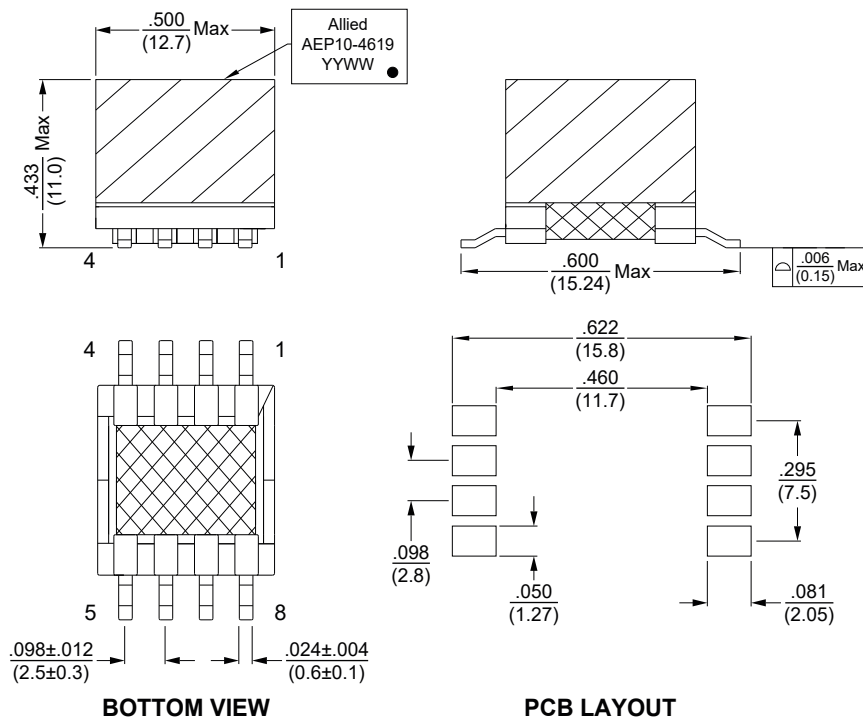
Electrical Specifications @25°C

Inductance @400KHz, 0.4V No Load	Inductance @400KHz, 0.4V @ 1.3A	Leakage Inductance @100KHz, 0.1V (Short pins 5,6-7,8)	Turns Ratio @15.75KHz, 1.0V (±3%)	DC Resistance (mΩ Max)		HiPot 3mA / 60Sec
(3 - 2)	(3 - 2)	(3 - 2)	(3-2) : (5,6-7,8)	(3 - 2)	(5,6-7,8)	Pri - Sec
40.0μH ±10%	36.0μH Min	0.5μH Max	1 : 0.3	98	23	1500VAC

All specifications subject to change without notice

MECHANICAL

Dimensions:  $\frac{\text{inch}}{\text{mm}}$



SCHEMATIC

