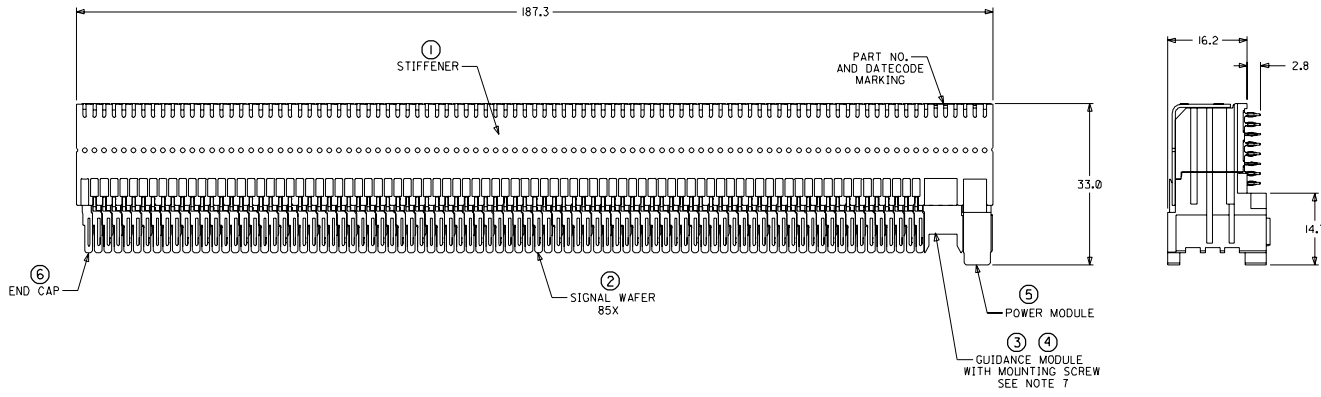
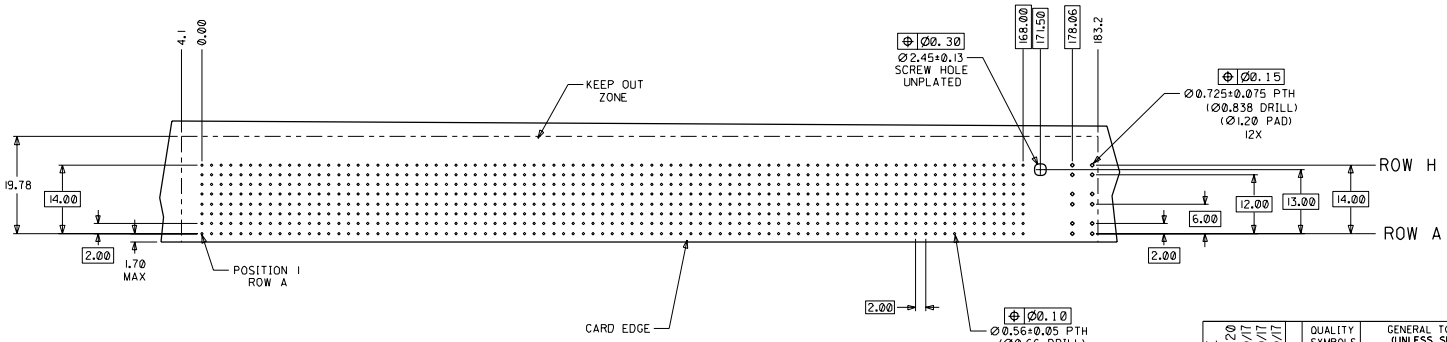
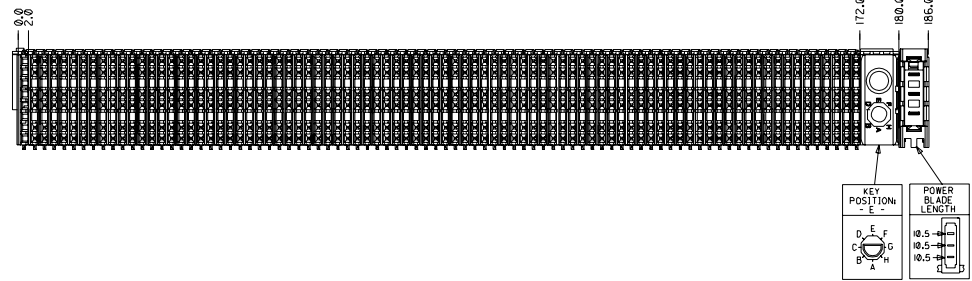


CUSTOMER: PROCKET NETWORKS



- NOTES: (UNLESS OTHERWISE SPECIFIED)
1. MATERIALS: HOUSING - LIQUID CRYSTAL POLYMER (LCP), GLASS-FILLED, UL94V-0, BLACK.
TERMINALS - HIGH PERFORMANCE COPPER ALLOY.
STIFFENER - STAINLESS STEEL.
 2. FINISH: SELECTIVE GOLD (Au) IN CONTACT AREA, 0.00076mm MINIMUM THICKNESS; SELECTIVE TIN/LEAD (Sn/Pb) ON PCB TAILS, NICKEL (Ni) OVERALL.
 3. REFER TO MOLEX PRODUCT SPECIFICATION PS-74031-999 FOR PERFORMANCE SPECIFICATIONS.
 4. REFER TO MOLEX DOCUMENT SD-74681-002 FOR ADDITIONAL DETAIL ON THE HSD8 SIGNAL WAFER.
 5. REFER TO MOLEX DOCUMENT SD-74037-006 FOR ADDITIONAL DETAIL ON THE GUIDANCE MODULE.
 6. REFER TO MOLEX DOCUMENT SD-74026-002 FOR ADDITIONAL DETAIL ON THE POWER MODULE.
 7. MOUNTING SCREWS WILL BE BAGGED WITH EACH CONNECTOR.
 8. PARTS ARE PACKAGED IN TUBES PER PK-70873-5041.



ITEM	PART NUMBER	DESCRIPTION	QTY
1	74046-0187	STIFFENER	1
2	74681-0001	HSD8 WAFER	85
3	74037-8005	POLARIZING/GUIDE MODULE	1
4	73726-0000	GUIDE MODULE MNTG SCREW	1
5	74026-8333	POWER MODULE	1
6	74038-1001	END CAP	1

DAUGHTERCARD HOLE PATTERN (CONNECTOR SIDE)

INITIAL RELEASE EC NO. UDT2002-0620 DRAWN: ATP 01/10/17 CHKS: LAURX 01/10/17 APPR: BIXLER 01/10/17	QUALITY SYMBOLS MAJOR: ∇ CRITICAL: \triangle	GENERAL TOLERANCES (UNLESS SPECIFIED) mm INCH 4 PLACES ±0. -- 2. -- 3 PLACES ±0. -- 2. -- 2 PLACES ±0. -- 2. -- 1 PLACE ±0. -- 2. -- ANGULAR: ± 2°	SCALE: 2:1 DESIGN UNITS: mm INCH DRAWN BY & DATE: ATP 01/10/17 CHECKED BY & DATE: LAURX 01/10/17 APPROVED BY & DATE: BIXLER 01/10/17	DIMENSIONS: mm INCH mm ONLY SHT: 1 REV: 1	
	TITLE: 8 ROW HSD DAUGHTERCARD ASSEMBLY SALES DRAWING			MOLEX INCORPORATED	
	CAD FILENAME: SD-74680-061		MATERIAL NO.: 74680-0061	DRAWING NO.: SD-74680-061	SHEET NO.: 1 OF 1
	DRAFT WHERE APPLICABLE MUST REMAIN WITHIN DIMENSIONS THIS DRAWING CONTAINS INFORMATION THAT IS PROPRIETARY TO MOLEX INCORPORATED AND SHOULD NOT BE USED WITHOUT WRITTEN PERMISSION.				