



## OPTOMX®

### Up to 2-in-1 High Performance External IP67 Antenna

A rugged outdoor antenna, OPTOMX is designed to provide high performance connectivity for wireless machine to machine applications. This antenna mounts to virtually any M2M or IoT enabled asset and requires no servicing through its lifetime.

#### FEATURES

- Up to 2 x Wideband Cellular LTE elements with powerful MIMO technology that operate over multiple bands in one IP67 rated housing
- Available in black or white

#### ADVANTAGES

- High gain provides bigger cellular footprint
- 5 year limited warranty included<sup>1</sup>
- Covered by one or more patents and pending applications<sup>2</sup>

<sup>1</sup>See terms and conditions at [airgain.com/antenna-plus-support/](http://airgain.com/antenna-plus-support/)

<sup>2</sup>For a list of the patents covering this product please visit <https://airgain.com/product-support/patents/>

#### PART NUMBER(S)

CONFIGURATION	CELLULAR ELEMENTS	Wi-Fi ELEMENTS	GNSS	PART NUMBER	DESCRIPTION
2-in-1	2	0	No	AP-M2M3-CC-Q-S22-BL-6	MIMO Cell/LTE x 2, Threaded bolt mount, SMA x 2, Black, 6 feet coax
Single Cellular	1	0	No	AP-M2M3-C-Q-S2-BL-6	Cell/LTE x 1, Threaded bolt mount, SMA x 1, Black, 6 feet coax

## TECHNICAL SPECIFICATIONS

### ELECTRICAL

Frequency Range	Elements 1 up to 2	689-960/1700-2700 MHz
Operational Bands	Elements 1 up to 2	LTE/Cellular
Peak Gain: Isotropic	Elements 1 up to 2	698-960 MHz, 3.5 dBi
		1710-2700 MHz, 5 dBi
Isolation	Elements 1 up to 2	>10 dB
Correlation Co-efficient	Elements 1 up to 2	<0.3

### ENVIRONMENTAL

Hazardous Substances	RoHS Compliant	
Temperature	-40°C to 65°C (-40°F to + 149°F) Operating and Storage conformance to IEC 60068	
Humidity (Non-Condensing)	5% to 96% Operating and Storage conformance to IEC 60068	
Water Ingress	IP67	
Military Spec	MIL-STD 810 conformance to vibration	

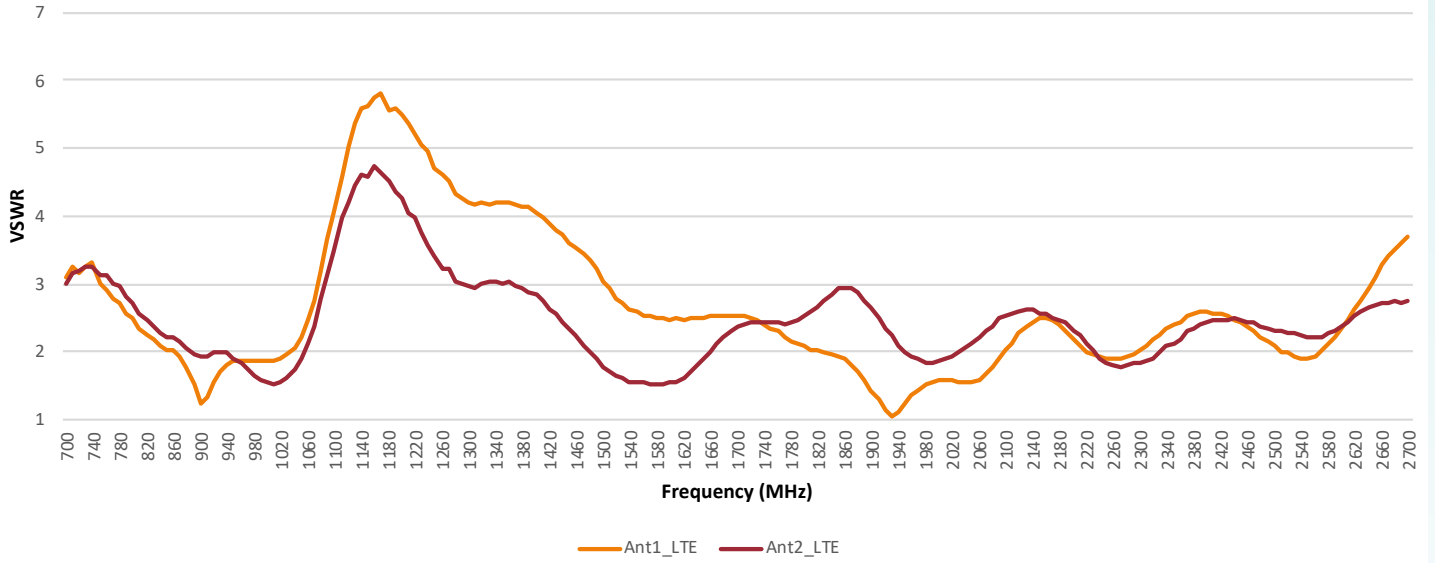
### MOUNTING

Dimensions	Height	3.62" (92mm)
	Diameter	2.49" (63.3mm)
Color	Black (BL) or White (WH)	

### CABLE

Cell	Type	LMR-195 Low Loss
	Diameter	0.195" (4.953mm)
	Length	1 ft (0.3m)
	Termination	SMA Male

### VSWR of LTE Antennas



### Isolation of LTE Antennas

