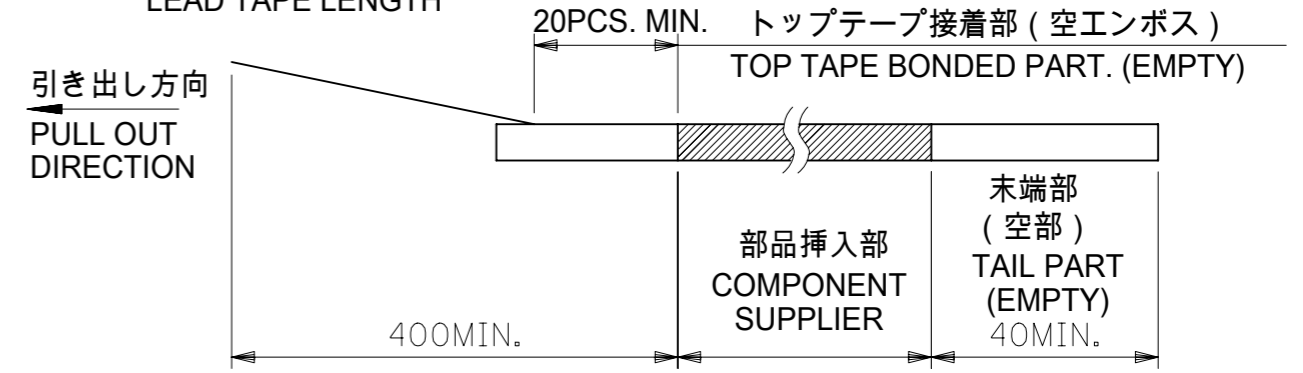


注記 NOTES

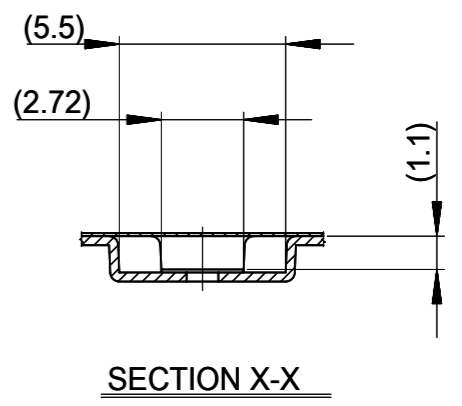
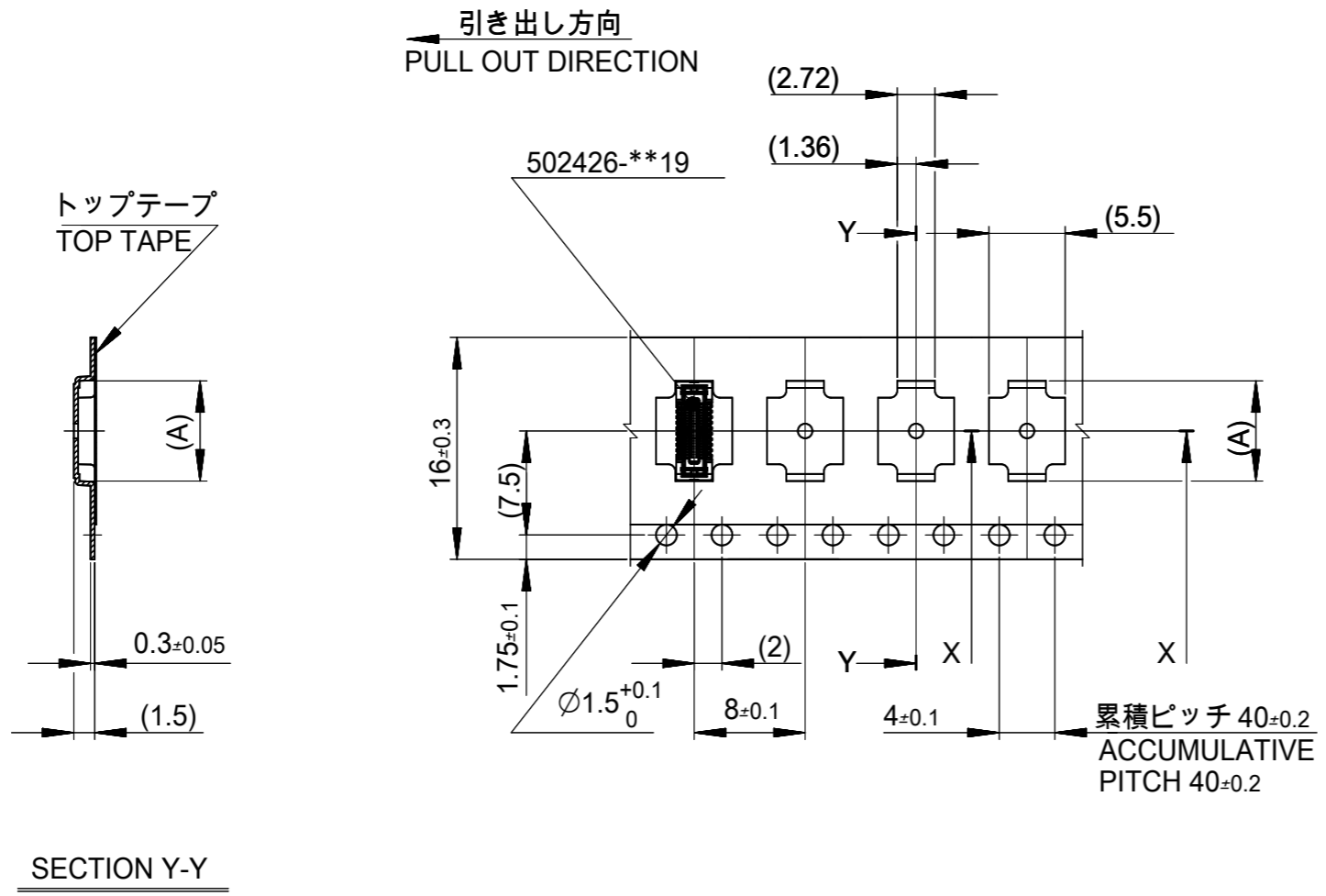
- 製品詳細寸法については製品単体図面を参照下さい。
DETAIL DIMENSIONS, SEE PRODUCT DRAWING.
- 梱包数量 : 7000個 / リール
NUMBER OF CONNECTORS : 7000PCS/REEL
- リードテープ長さ
LEAD TAPE LENGTH



- 材料 MATERIAL
キャリアテープ(CARRIER TAPE) : ポリスチレン(POLYSTYRENE)
トップテープ(TOP TAPE) : PET,OTHER
リール(REEL):ポリスチレン(PS)<リサイクル材を含む>
POLYSTYRENE(PS) < RECYCLE MATERIAL CONTAINED >
- ELV 及び RoHS適合品
ELV AND RoHS COMPLIANT

MODEL NO. 502426-**12

THIS DRAWING CONTAINS INFORMATION THAT IS PROPRIETARY TO MOLEX ELECTRONIC TECHNOLOGIES, LLC AND SHOULD NOT BE USED WITHOUT WRITTEN PERMISSION		CURRENT REV DESC: REVISED		molex	
DIMENSION UNITS	SCALE				
mm	NTS			PRODUCT CUSTOMER DRAWING	
GENERAL TOLERANCES (UNLESS SPECIFIED)		EC NO: 639809		DOCUMENT NUMBER	
ANGULAR TOL ± 3.0°		DRWN: SCV 2020/06/24		5024260000	
4 PLACES ± 0.03		CHK'D: HSHIMUYAMA 2020/07/02		DOC TYPE DOC PART REVISION	
3 PLACES ± 0.03		APPR: SHOSHIKAWA 2020/07/02		PSD 000 C	
2 PLACES ± 0.05		INITIAL REVISION:		MATERIAL NUMBER	
1 PLACE ± 0.1		DRWN: YSHIBATA 2016/12/13		CUSTOMER	
0 PLACES ± 0.2		APPR: MSASAO 2017/01/19		GENERAL	
DRAFT WHERE APPLICABLE MUST REMAIN WITHIN DIMENSIONS		THIRD ANGLE PROJECTION	DRAWING	SERIES	SHEET NUMBER
			A3-SIZE	502426	1 OF 4



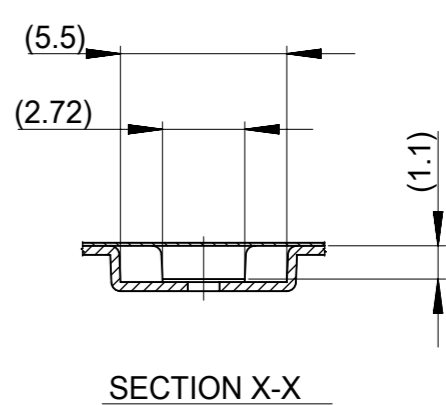
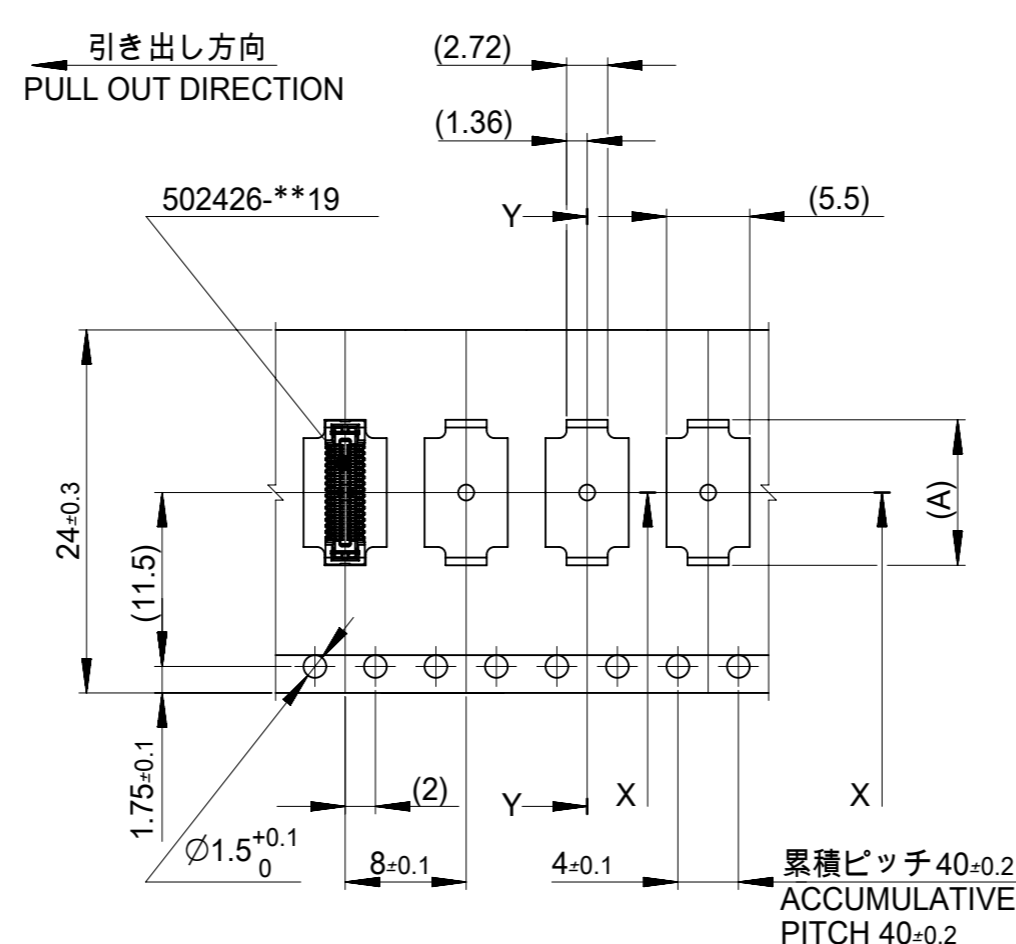
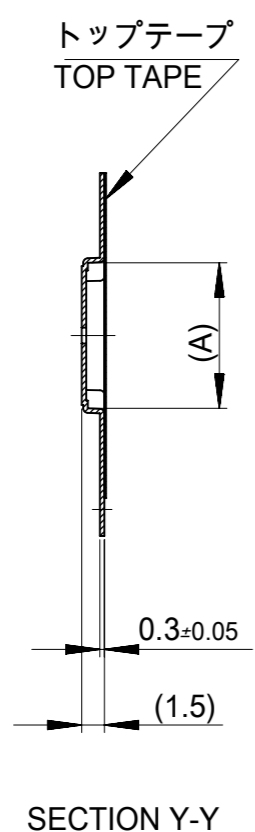
16mm 幅キャリアテープ
16mm WIDTH CARRIER TAPE

16	21.4	17.4	8.42	502426-2612	26	
			8.02	502426-2412	24	
			7.62	502426-2212	22	
			7.22	502426-2012	20	
			6.02	502426-1412	14	
			4.82	502426-0812	8	
キャリアテープ幅 CARRIER TAPE WIDTH		C	B	(A)	MATERIAL No.	CKT.
				MODEL No.	502426-**12	

CONNECTOR SERIES NO.:502426**19

THIS DRAWING CONTAINS INFORMATION THAT IS PROPRIETARY TO MOLEX ELECTRONIC TECHNOLOGIES, LLC AND SHOULD NOT BE USED WITHOUT WRITTEN PERMISSION

DIMENSION UNITS mm	SCALE NTS	CURRENT REV DESC: REVISED		molex			
GENERAL TOLERANCES (UNLESS SPECIFIED)		EC NO: 639809					0.4 B TO B CONN. HGT=1.0 REC ASSY EMBSTP PKG
ANGULAR TOL	± 3.0°	DRWN: SCV		2020/06/24			
4 PLACES	± 0.03	CHK'D: HSHIMUYAMA		2020/07/02			
3 PLACES	± 0.03	APPR: SHOSHIKAWA		2020/07/02			
2 PLACES	± 0.05	INITIAL REVISION:		DOCUMENT NUMBER			
1 PLACE	± 0.1	DRWN: YSHIBATA		5024260000		DOC TYPE	
0 PLACES	± 0.2	APPR: MSASAO		2016/12/13		DOC PART	
DRAFT WHERE APPLICABLE MUST REMAIN WITHIN DIMENSIONS		THIRD ANGLE PROJECTION	DRAWING	SERIES	MATERIAL NUMBER	CUSTOMER	REVISION
			A3-SIZE	502426	SEE TABLE	GENERAL	C
							SHEET NUMBER
							2 OF 4



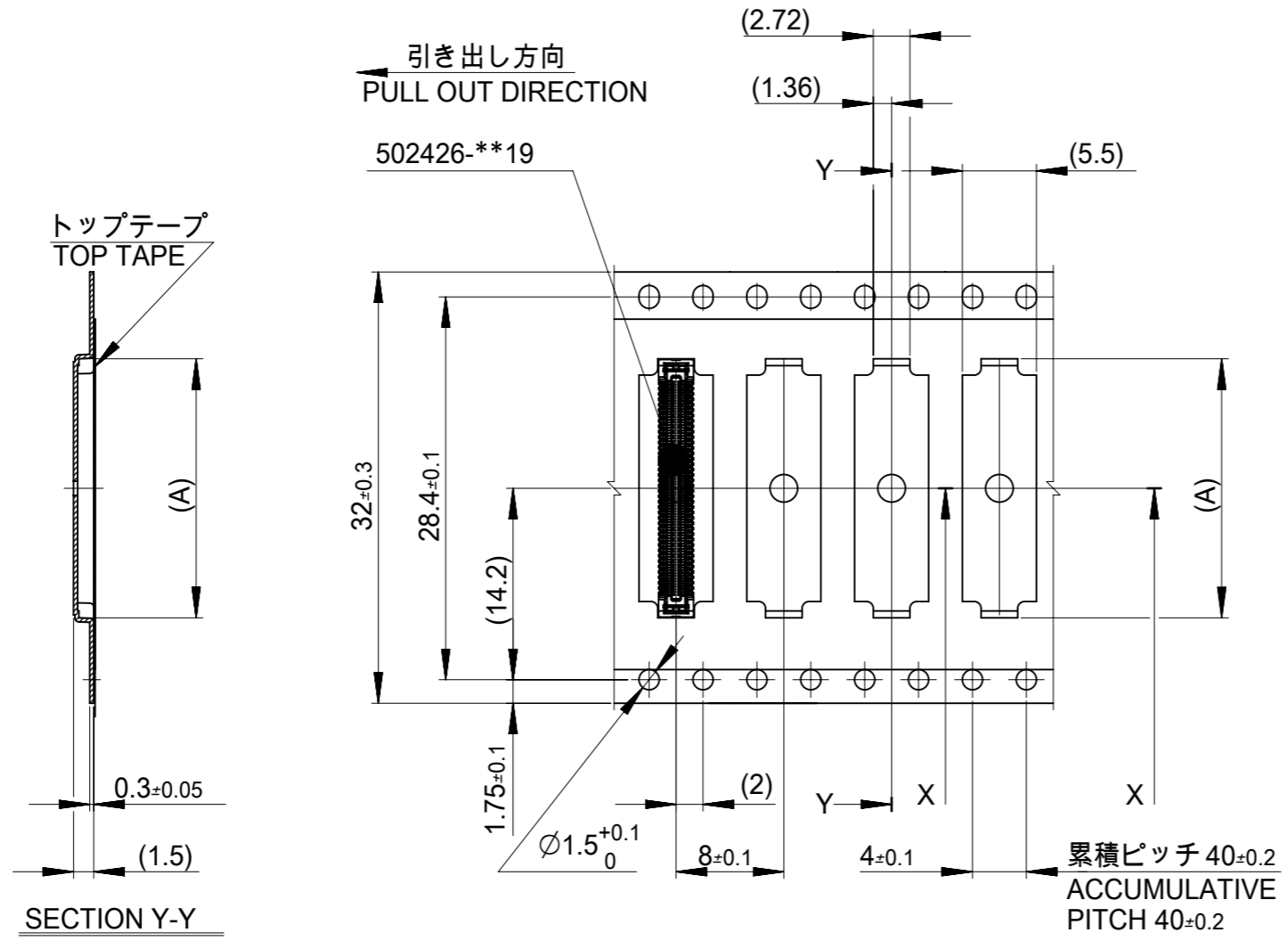
24mm 幅キャリアテープ
24mm WIDTH CARRIER TAPE

24	29.4	25.4	16.02	502426-6412	64
			15.22	502426-6012	60
			13.22	502426-5012	50
			12.02	502426-4412	44
			11.22	502426-4012	40
			10.02	502426-3412	34
			9.62	502426-3212	32
			9.22	502426-3012	30
キャリアテープ幅 CARRIER TAPE WIDTH	C	B	(A)	MATERIAL No.	CKT.
				MODEL No.	502426-**-12

CONNECTOR SERIES NO.:502426-**-19

THIS DRAWING CONTAINS INFORMATION THAT IS PROPRIETARY TO MOLEX ELECTRONIC TECHNOLOGIES, LLC AND SHOULD NOT BE USED WITHOUT WRITTEN PERMISSION

DIMENSION UNITS mm	SCALE NTS	CURRENT REV DESC: REVISED		molex		
GENERAL TOLERANCES (UNLESS SPECIFIED)		EC NO: 639809				
ANGULAR TOL	± 3.0°	DRWN: SCV		PRODUCT CUSTOMER DRAWING		
4 PLACES	± 0.03	CHK'D: HSHIMUYAMA		DOCUMENT NUMBER		
3 PLACES	± 0.03	APPR: SHOSHIKAWA		5024260000		
2 PLACES	± 0.05	INITIAL REVISION:		DOC TYPE		
1 PLACE	± 0.1	DRWN: YSHIBATA		PSD		
0 PLACES	± 0.2	APPR: MSASAO		DOC PART		
DRAFT WHERE APPLICABLE MUST REMAIN WITHIN DIMENSIONS		THIRD ANGLE PROJECTION		REVISION		
		DRAWING		C		
		SERIES		SHEET NUMBER		
		A3-SIZE		3 OF 4		
		502426				
		MATERIAL NUMBER				
		SEE TABLE				
		CUSTOMER				
		GENERAL				



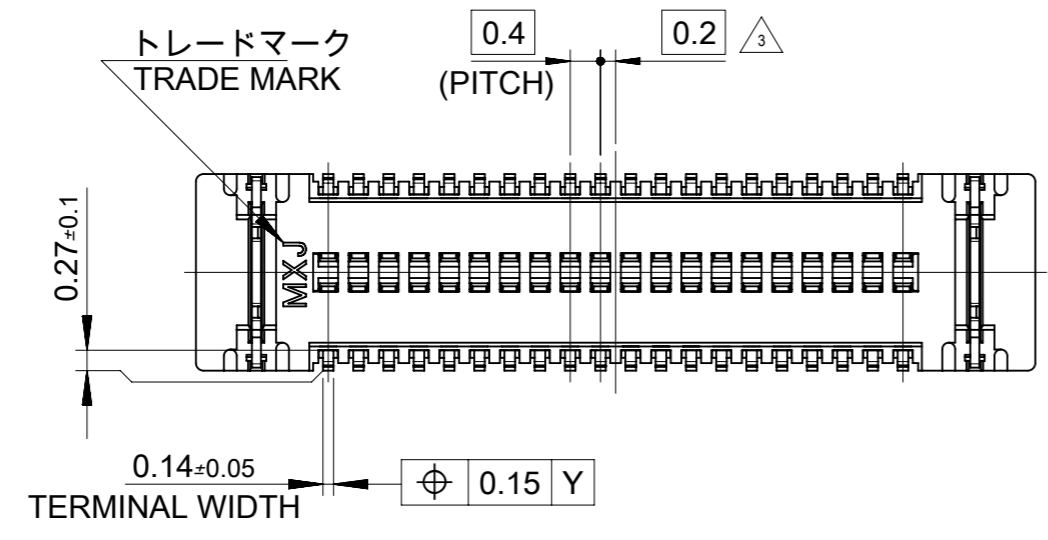
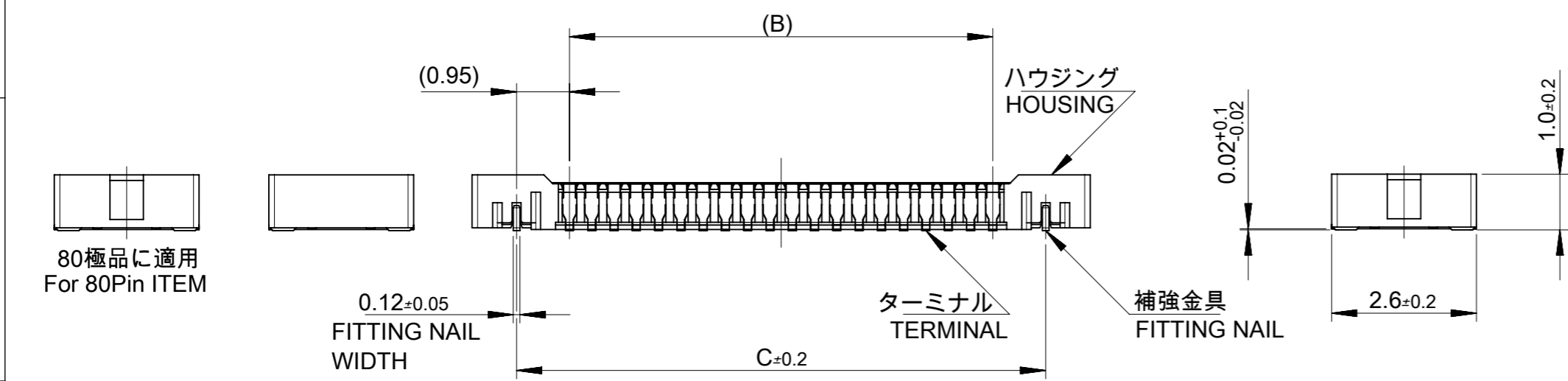
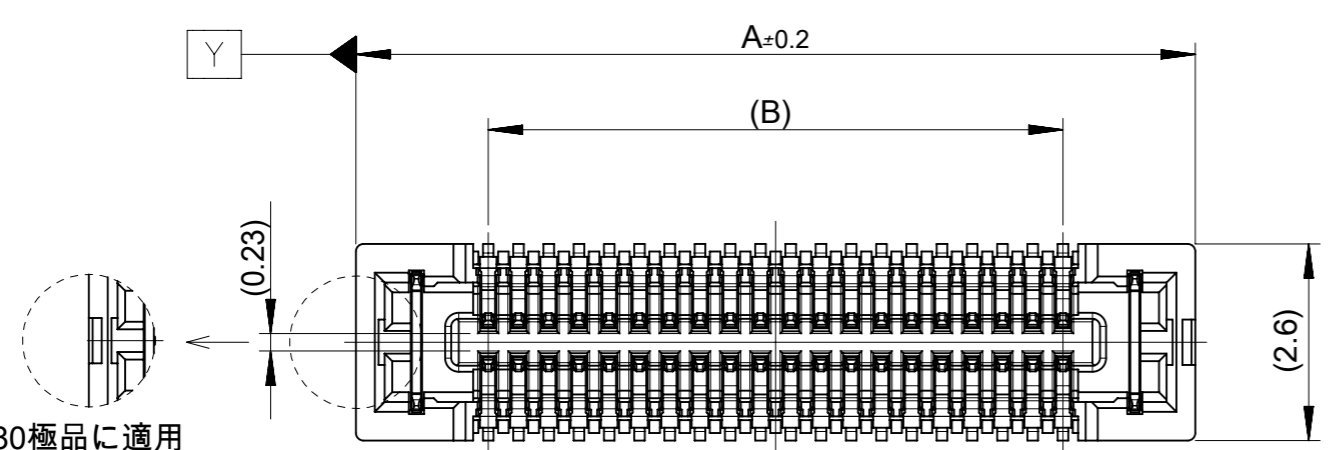
32mm 幅キャリアテープ
32mm WIDTH CARRIER TAPE

32	37.4	33.4	19.22	502426-8012	80
			17.22	502426-7012	70
キャリアテープ幅 CARRIER TAPE WIDTH	C	B	(A)	MATERIAL No.	CKT.
				MODEL No.	502426-**12

CONNECTOR SERIES NO. :502426-**19

THIS DRAWING CONTAINS INFORMATION THAT IS PROPRIETARY TO MOLEX ELECTRONIC TECHNOLOGIES, LLC AND SHOULD NOT BE USED WITHOUT WRITTEN PERMISSION

DIMENSION UNITS mm	SCALE NTS	CURRENT REV DESC: REVISED	molex		
GENERAL TOLERANCES (UNLESS SPECIFIED)					
ANGULAR TOL	± 3.0 °	EC NO: 639809	PRODUCT CUSTOMER DRAWING		
4 PLACES	± 0.03	DRWN: SCV 2020/06/24	DOCUMENT NUMBER		
3 PLACES	± 0.03	CHK'D: HSHIMOYAMA 2020/07/02	5024260000		
2 PLACES	± 0.05	APPR: SHOSHIKAWA 2020/07/02	DOC TYPE	DOC PART	REVISION
1 PLACE	± 0.1	INITIAL REVISION:	PSD	000	C
0 PLACES	± 0.2	DRWN: YSHIBATA 2016/12/13	SHEET NUMBER		
DRAFT WHERE APPLICABLE MUST REMAIN WITHIN DIMENSIONS		THIRD ANGLE PROJECTION	DRAWING	SERIES	MATERIAL NUMBER
			A3-SIZE	502426	SEE TABLE
			CUSTOMER	GENERAL	4 OF 4



17.5	15.6	19.1	502426-8012	80
15.5	13.6	17.1	502426-7012	70
14.3	12.4	15.9	502426-6412	64
13.5	11.6	15.1	502426-6012	60
11.5	9.6	13.1	502426-5012	50
10.3	8.4	11.9	502426-4412	44
9.5	7.6	11.1	502426-4012	40
8.3	6.4	9.9	502426-3412	34
7.9	6.0	9.5	502426-3212	32
7.5	5.6	9.1	502426-3012	30
6.7	4.8	8.3	502426-2612	26
6.3	4.4	7.9	502426-2412	24
5.9	4.0	7.5	502426-2212	22
5.5	3.6	7.1	502426-2012	20
4.3	2.4	5.9	502426-1412	14
3.1	1.2	4.7	502426-0812	8
C	B	A	EMBOSSED PACKAGE オーダー番号 ORDER No.	極数 CIRCUITS

CONNECTOR SERIES No. 502426-**19

THIS DRAWING CONTAINS INFORMATION THAT IS PROPRIETARY TO MOLEX ELECTRONIC TECHNOLOGIES, LLC AND SHOULD NOT BE USED WITHOUT WRITTEN PERMISSION		CURRENT REV DESC: REVISED		molex	
DIMENSION UNITS mm	SCALE 10:1				
GENERAL TOLERANCES (UNLESS SPECIFIED)		EC NO: 639809		PRODUCT CUSTOMER DRAWING	
ANGULAR TOL ± 3.0°		DRWN: SCV 2020/06/24		DOCUMENT NUMBER 5024261000	
4 PLACES ± 0.03		CHK'D: HSHIMUYAMA 2020/07/02		DOC TYPE PSD	
3 PLACES ± 0.03		APPR: SHOSHIKAWA 2020/07/02		DOC PART 000	
2 PLACES ± 0.05		INITIAL REVISION:		REVISION C	
1 PLACE ± 0.1		DRWN: YSHIBATA 2016/12/13			
0 PLACES ± 0.2		APPR: MSASAO 2017/01/19			
DRAFT WHERE APPLICABLE MUST REMAIN WITHIN DIMENSIONS		THIRD ANGLE PROJECTION	DRAWING A3-SIZE	SERIES 502426	MATERIAL NUMBER SEE TABLE
				CUSTOMER GENERAL	SHEET NUMBER 1 OF 2

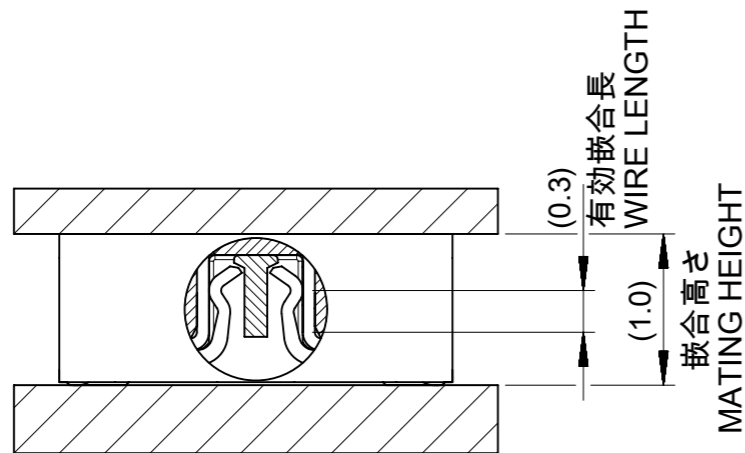
注記 NOTE

1. 使用材料 MATERIAL
 ハウジング：液晶ポリマー (LCP) ガラス充填 UL94V-0 (黒)
 HOUSING: LIQUID CRYSTAL POLYMER (GLASS FILLED) UL94V-0 (COLOR: BLACK)
 ターミナル：りん青銅 (t=0.1)
 TERMINAL : PHOSPHOR BRONZE (t=0.1)
 金具：りん青銅 (t=0.12)
 FITTING NAIL : PHOSPHOR BRONZE (t=0.12)

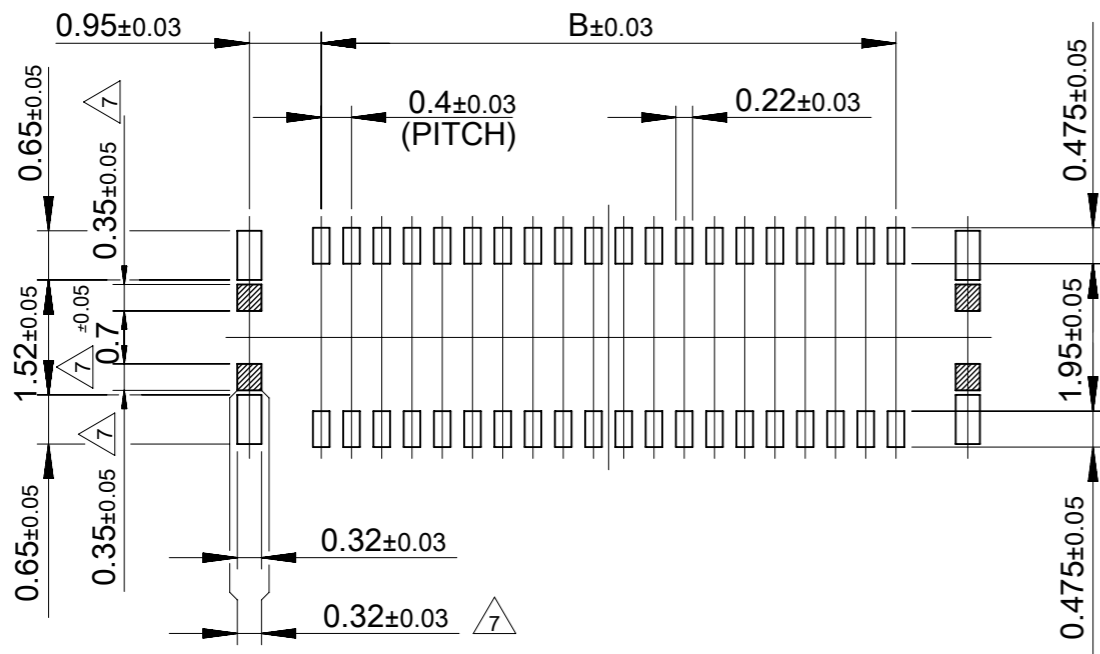
2. メッキ仕様 PLATING
 ターミナル TERMINAL
 コンタクト部：金メッキ0.1マイクロメートル以上
 CONTACT AREA : GOLD 0.1 MICROMETER MINIMUM.
 テール部：金メッキ0.05マイクロメートル以上
 TAIL AREA : GOLD 0.05 MICROMETER MINIMUM.
 下地メッキ：ニッケルメッキ 1.0マイクロメートル以上
 UNDER PLATING : NICKEL 1.0 MICROMETER MINIMUM
 ※コンタクト部とテール部はニッケルメッキによって分断されている金メッキです。
 DIVIDE INTO PARTS THE GOLD PLATING OF THE CONTACT AND THE TAIL PART BY THE NICKEL PLATING.

- 金具 FITTING NAIL
 フラッシュ金メッキ
 FLASH Au PLATING
 下地メッキ：ニッケルメッキ 1.0マイクロメートル以上
 UNDER PLATING : NICKEL 1.0 MICROMETER MINIMUM

- △₃ (全極数 / 2) = 偶数の場合に適用。
 APPLY FOR (CIRCUIT/2)=EVEN.
4. 嵌合相手：502430シリーズ
 MATE WITH : 502430 SERIES.
5. テール平坦度は、0.08以下
 TAIL COPLANARITY TO BE 0.08 MAXIMUM.
 テール及び金具の平坦度は、0.1以下
 TAIL AND FITTING NAIL COPLANARITY TO BE 0.1 MAXIMUM.
6. ELV 及び RoHS 適合品
 ELV AND RoHS COMPLIANT.
- △₇ 斜線部はパターン書込み禁止範囲と半田禁止範囲を示す。
 ただし、斜線部に補強金具と同一配線を配置する場合はレジストを施し、この部分に半田は無きこと。
 NO PATTERN CIRCUIT AND NO SOLDER ALLOWED IN THE SHADED AREA.
 HOWEVER, IF NEEDED TO ADD A TRACE OF THE SAME CIRCUIT, PUT THE SOLDER-RESIST,
 YET NO SOLDER ALLOWED IN THE AREA.



嵌合断面図 (参考)
 MATED DRAWING (REFERENCE)



P.C. BOARD PATTERN LAYOUT
 (REFERENCE)

THIS DRAWING CONTAINS INFORMATION THAT IS PROPRIETARY TO MOLEX ELECTRONIC TECHNOLOGIES, LLC AND SHOULD NOT BE USED WITHOUT WRITTEN PERMISSION		CURRENT REV DESC: REVISED		molex		
DIMENSION UNITS	SCALE					0.4 B TO B CONN. HGT=1.0 W=2.6 REC ASSY
mm	10:1					
GENERAL TOLERANCES (UNLESS SPECIFIED)		EC NO: 639809		DOCUMENT NUMBER		
ANGULAR TOL	± 3.0°	DRWN: SCV 2020/06/24		5024261000		
4 PLACES	± 0.03	CHK'D: HSHIMOYAMA 2020/07/02		DOC TYPE DOC PART REVISION		
3 PLACES	± 0.03	APPR: SHOSHIKAWA 2020/07/02		PSD 000 C		
2 PLACES	± 0.05	INITIAL REVISION:				
1 PLACE	± 0.1	DRWN: YSHIBATA 2016/12/13				
0 PLACES	± 0.2	APPR: MSASAO 2017/01/19				
DRAFT WHERE APPLICABLE MUST REMAIN WITHIN DIMENSIONS		THIRD ANGLE PROJECTION	DRAWING	SERIES	MATERIAL NUMBER	CUSTOMER
			A3-SIZE	502426	SEE SHEET 1	GENERAL
						SHEET NUMBER
						2 OF 2