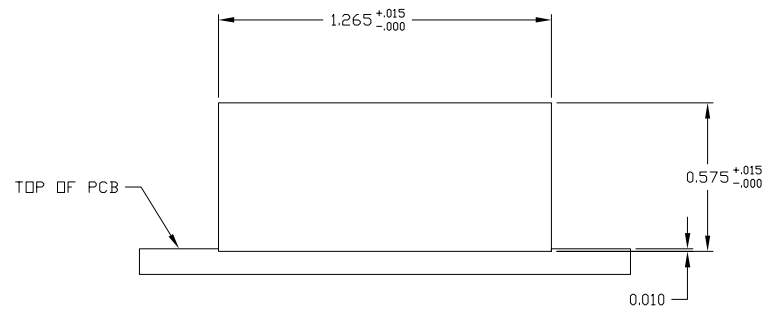
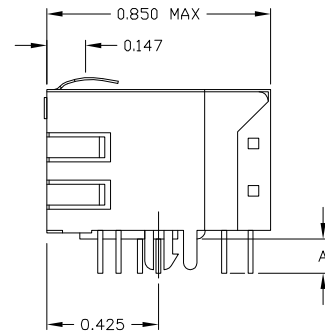
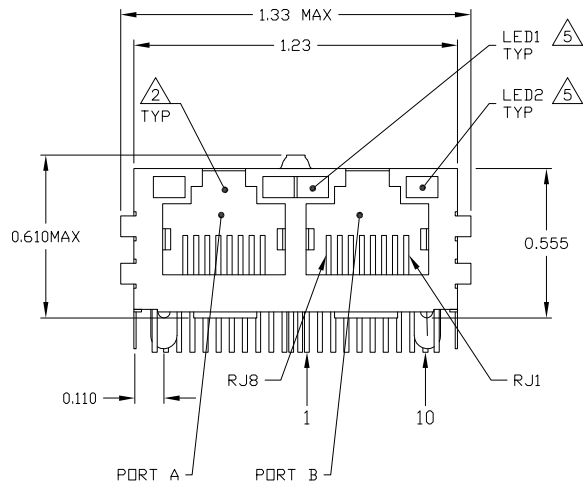
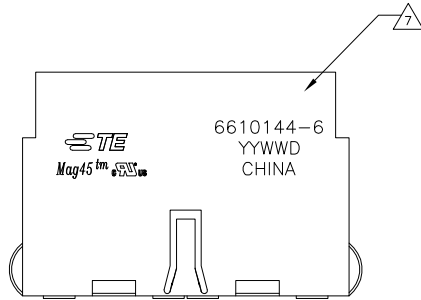


LOC		DIST		REVISIONS			
AA	22	REV	DESCRIPTION	DATE	BY	APP'D	
D		REV PER	ECO-08-015464	05JUN2008	QL	TX	
E		ECO-11-013425		20MAY2011	EL	LR	

MECHANICAL:



1X2 SUGGESTED PANEL CUTOUT

- 1. MATERIALS:
 - HOUSING - THERMOPLASTIC PET POLYESTER FLAMMABILITY RATING UL 94V-0.
 - SHIELD - 0.010" THICK, C26800 BRASS PREPLATED WITH 30μINCH MIN SEMI-BRIGHT NICKEL. SOLDER TABS POST DIPPED WITH 100μINCH MIN SAC SOLDER.
 - MOD JACK CONTACTS - 0.0157" X 0.018" PHOSPHOR BRONZE, 50μINCH MIN OVERALL NICKEL UNDERPLATE WITH SELECT 50μINCH MIN HARD GOLD FINISH PLATE.
 - SOLDERTAILS WITH 100μINCH MIN MATTE TIN AND/OR SAC SOLDER DIP.
 - LIGHT EMITTING DIODE(LED) - DIFFUSED EPOXY LENS, 0.020" X 0.020" CARBON STEEL WIREFRAME LEADS PRE-PLATED WITH 80μINCH SILVER OVER 40μINCH NICKEL UNDERPLATE OVER 40μINCH COPPER UNDERPLATE. POST-PLATED WITH 100μINCH MIN MATTE TIN AND/OR SAC SOLDER DIP OR PURE TIN SOLDER DIP.
- 2. RJ45 JACK CAVITY CONFORMS TO FCC RULES AND REGULATIONS PART 68, SUB PART F.
- 3. MAGNETICS
 - IMPEDANCE: 100 OHMS
 - TURNS RATIO (CHIP: CABLE): 1:1 ALL FOUR PAIRS
 - OPEN CIRCUIT INDUCTANCE (OCL): 350μH MIN @100kHz, 0.1VRMS, 8mADC BIAS FROM 0 °C TO 70 °C, ALL FOUR PAIRS
 - ALL FOUR PAIRS BI-DIRECTIONAL
 - PERFORMANCE @ 25 °C:
 - INSERTION LOSS (IL): 1.1dB MAX FROM 0.5MHz TO 100MHz
 - RETURN LOSS (RL): 18dB MIN FROM 0.5MHz TO 40MHz
 - 12-20LOG(f/80)dB MIN FROM 40.1MHz TO 100MHz
 - CROSSTALK ATTENUATION: 35dB MIN FROM 0.5MHz TO 40MHz
 - 33-20xLOG(f/50)dB MIN FROM 40.1MHz TO 100MHz
 - COMMON MODE REJECTION RATIO (CMRR): 30dB MIN FROM 0.5MHz TO 100MHz
 - ISOLATION VOLTAGE: 2250VDC (MAX) FOR 60 SECONDS WITH A RISE TIME OF 500V/SEC AND WITH ALL PORTS CONNECTED.
- 4. OPERATING TEMPERATURE: FROM 0°C TO + 70°C.
- 5. LED IS DRIVEN WITH CONSTANT CURRENT AT APPROX 20mA.
 - LED COLOR-DOMINANT WAVELENGTH(D):GREEN 568nm TYP. AT IF=20mA
 - FORWARD VOLTAGE (VF): GREEN 2.2V TYP. AT IF=20mA
 - DOMINANT WAVELENGTH(D):YELLOW 588nm TYP. AT IF=20mA
 - FORWARD VOLTAGE (VF): YELLOW 2.1V TYP. AT IF=20mA.
- 6. THE MAGNETICS ARE SYMMETRICAL AND SUPPORT AUTO-MDI/MDIX.
- 7. TE CONNECTIVITY LOGO, PART NUMBER, DATE CODE, COUNTRY OF ORIGIN AND AGENCY APPROVAL MARKING IN APPROXIMATE LOCATION SHOWN.
- 8. THESE PARTS ARE RECOMMENDED FOR WAVE SOLDERING PROCESS, PEAK WAVE SOLDERING TEMPERATURE IS 265°C MAX, 10 SECONDS MAX.

0.110±0.010	GREEN/YELLOW	GREEN/YELLOW	2-6610144-6
0.145±0.010	GREEN	YELLOW	6610144-8
0.145±0.010	GREEN/YELLOW	GREEN/YELLOW	6610144-6
DIM "A"	LED1 (triangle 5)	LED2 (triangle 5)	PART NUMBER

DIMENSIONS:		DRAWING SPEC:		MATERIAL:		FINISH:		WEIGHT:		SCALE:		SHEET:		REV:	
0	PAC	±	-	1	PAC	±	0.010	2	PAC	±	0.010	3	PAC	±	0.010
4	PAC	±	0.005	1	PAC	±	0.005	1	PAC	±	0.005	1	2	1	2
MATERIAL		FINISH		WEIGHT		SCALE		SHEET		REV		CUSTOMER DRAWING		SCALE	
TE Connectivity		1X2 MAG45(TW) MODULAR JACK, 704 SCHEMATIC, (10 PIN HORIZONTAL), 7G06 SERIES GIGABIT CIRCUIT, SHIELDED, WITH LEADS		A1 00779		C=6610144		4:1		1 of 2		REV F			

