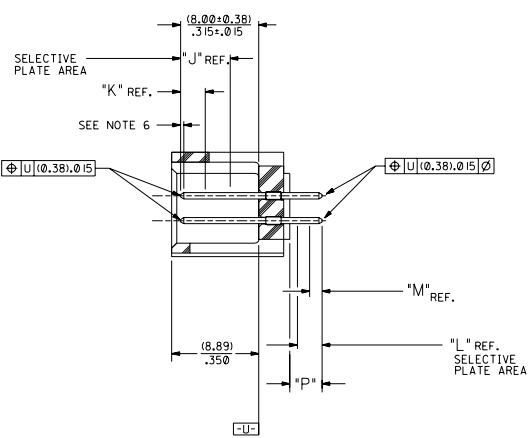


RECOMMENDED P.C. BOARD HOLE LAYOUT



SECTION J-J

NOTES:

- 1- 20 CIRCUIT SIZE SHOWN FOR ILLUSTRATION PURPOSES.
- 2- PIN PUSHOUT FORCE: (17.79 N) 4 LBS.
- 3- PINS MUST MEET SOLDERABILITY SPEC. MIL-STD-202 METHOD 208B.
- 4- WINDOW NOT AVAILABLE ON 6 AND 8 CIRCUIT SIZE.
- 5- FOR CHARTED DIMENSIONS AND ASSEMBLY NO.S NOT SHOWN ON THIS SHEET - SEE SHEET 2.
- 6- ROW TO ROW PIN HEIGHT VARIATION MUST NOT EXCEED (0.13)/.005 IN.
- 7- PRODUCT CONFORMS TO PS-8723.

MATERIAL:

SHROUDED WAFER: GLASS FILLED POLYESTER, 94V-0; COLOR: BLACK.
PINS: PHOSPHOR BRONZE,
SEE SHEET 2 FOR FINISHES.

ASSEMBLY STYLE "A" AND "B"

CKT.	DIM. "A"		DIM. "B"		DIM. "C"		DIM. "D"		DIM. "E"	
	INCH	MILL	INCH	MILL	INCH	MILL	INCH	MILL	INCH	MILL
06	(1.68) .066	(8.43) .332	(5.08) .200	(1.68) .066						
08	(1.68) .066	(10.97) .432	(7.62) .300	(1.68) .066						
10	(1.68) .066	(13.51) .532	(10.16) .400	(4.22) .166						
12	(1.68) .066	(16.05) .632	(12.70) .500	(4.22) .166						
14	(1.68) .066	(18.59) .732	(15.24) .600	(4.22) .166						
16	(1.68) .066	(21.13) .832	(17.78) .700	(4.22) .166						
18	(1.68) .066	(23.67) .932	(20.32) .800	(4.22) .166						
20	(1.68) .066	(26.21) .1032	(22.86) .900	(4.22) .166						
22	(1.68) .066	(28.75) .1132	(25.40) .1000	(4.22) .166						
24	(1.68) .066	(31.29) .1232	(27.94) .1100	(4.22) .166						
26	(1.68) .066	(33.83) .1332	(30.48) .1200	(4.22) .166						
28	(1.68) .066	(36.37) .1432	(33.02) .1300	(4.22) .166						
30	(1.68) .066	(38.91) .1532	(35.56) .1400	(4.22) .166						
32	(1.68) .066	(41.45) .1632	(38.10) .1500	(4.22) .166						
34	(1.68) .066	(43.99) .1732	(40.64) .1600	(4.22) .166						
36	(1.68) .066	(46.53) .1832	(43.18) .1700	(4.22) .166						
38	(1.68) .066	(49.07) .1932	(45.72) .1800	(4.22) .166						
40	(1.68) .066	(51.61) .2032	(48.26) .1900	(4.22) .166						
42	(1.68) .066	(54.15) .2132	(50.80) .2000	(4.22) .166						
44	(1.68) .066	(56.69) .2232	(53.34) .2100	(4.22) .166						
46	(1.68) .066	(59.23) .2332	(55.88) .2200	(4.22) .166						
48	(1.68) .066	(61.77) .2432	(58.42) .2300	(4.22) .166						
50	(1.68) .066	(64.31) .2532	(60.96) .2400	(4.22) .166						
52	(1.68) .066	(66.85) .2632	(63.50) .2500	(4.22) .166						
54	(1.68) .066	(69.39) .2732	(66.04) .2600	(4.22) .166						
56	(1.68) .066	(71.93) .2832	(68.58) .2700	(4.22) .166						
58	(1.68) .066	(74.47) .2932	(71.12) .2800	(4.22) .166						
60	(1.68) .066	(77.01) .3032	(73.66) .2900	(4.22) .166						
62	(1.68) .066	(79.55) .3132	(76.20) .3000	(4.22) .166						
64	(1.68) .066	(82.09) .3232	(78.74) .3100	(4.22) .166						
66	(1.68) .066	(84.63) .3332	(81.28) .3200	(4.22) .166						
68	(1.68) .066	(87.17) .3432	(83.82) .3300	(4.22) .166						
70	(1.68) .066	(89.71) .3532	(86.36) .3400	(4.22) .166						
72	(1.68) .066	(92.25) .3632	(88.90) .3500	(4.22) .166						

- U ADD -3803 OPT
DCP2004-2268
DMORGAN 04/05/20
- T LEAD FREE
USP2004-1770
R WHITE 04/04/26
- S ADD -3802 OPTION
ECN #022004-052
DMORGAN 04/01/2
- R2 TAB DIF DIM 6 CIR
ECN #010999-0145
DMORGAN 56/09/01
- R1 ADD WDG LATCH NOTE
ECN #010998-0399
DMORGAN 56/06/23
- R ADDED SHEET 7
PER ECR NO US0208
03-23-96
- O REMOVE FDP NO.S
PER ECR NO US0205
05-04-93
- P CHGD WINDOW NOTES
PER ECR NO US0316
05-04-93
- O CHANGED MATERIAL
PER ECR NO US0146
01-22-93
- R2 REVISED A REDRAWN
PER ECR NO US0173
05-28-92
- LTR REVISIONS

DIMENSIONS SHOWN METRIC INCH
 UNLESS OTHERWISE SPECIFIED
 1 INCH = 25.4 MILLIMETERS
 1 MILLIMETER = 0.03937 INCHES
 DIM. METRIC DIM. INCH
 1 P LK ± .005 ± .013
 2 P LK ± .01 ± .013
 1 P LK --- ± .025
 DIMENSIONS SHOWN METRIC INCH UNLESS OTHERWISE SPECIFIED
 DATE: 08/02/07
 SHEET NO. 1 OF 7
 DATE: 08/02/07
 PART NO. SDA-8723-*****
 SEE CHART
 FILE NO. S8723A1
 SCALE 4:1
 REV. 1
 DATE: 08/02/07
 SHEET NO. 1 OF 7
 DATE: 08/02/07
 PART NO. SDA-8723-*****
 SEE CHART
 FILE NO. S8723A1
 SCALE 4:1

NO. OF CKTS	TIN		TIN		15 GOLD		15 GOLD		30 GOLD		30 GOLD		50 GOLD		50 GOLD					
	EDP NUMBER	ENG NUMBER	EDP NUMBER	ENG NUMBER	EDP NUMBER	ENG NUMBER	EDP NUMBER	ENG NUMBER	EDP NUMBER	ENG NUMBER	EDP NUMBER	ENG NUMBER	EDP NUMBER	ENG NUMBER	EDP NUMBER	ENG NUMBER	EDP NUMBER	ENG NUMBER	EDP NUMBER	ENG NUMBER
	06	15-42-6006	A-8723-06A164	15-42-6106	A-8723-06B164	15-29-6006	A-8723-06A571	15-29-6106	A-8723-06B571	15-41-7006	A-8723-06A574	15-41-7106	A-8723-06B574	A-8723-06A596	A-8723-06B596					

CONNECTOR END PLATING		P.C. BOARD END PLATING		PACKAGING	
TYPE	J LENGTH	K MEAS.	TYPE	L LENGTH	M MEAS.
TIN	(2.54) .100	(2.54) .100	TIN	(1.27) .050	(1.27) .050

SALES ASSEMBLY
WAFER-STRAIGHT MT. FULLY SHROUDED
.100 GRID-FOR USE W/.025 SQ. PINS
WITH .066 END WALLS

MOLEX INCORPORATED
86032

DATE: 9/2/07 17
SHEET NO. 2

SEE CHART SDA-8723-*****

DIMENSIONS SHOWN METRIC INCH

UNLESS OTHERWISE SPECIFIED
TOLERANCES ARE AS FOLLOWS:

	INCH	METRIC
PLATE 1	± .015	± .38
PLATE 2	± .015	± .38
PLATE 3	± .015	± .38

DATE: 9/2/07 17
SCALE: 1:1

REV. DATE: 9/2/07 17