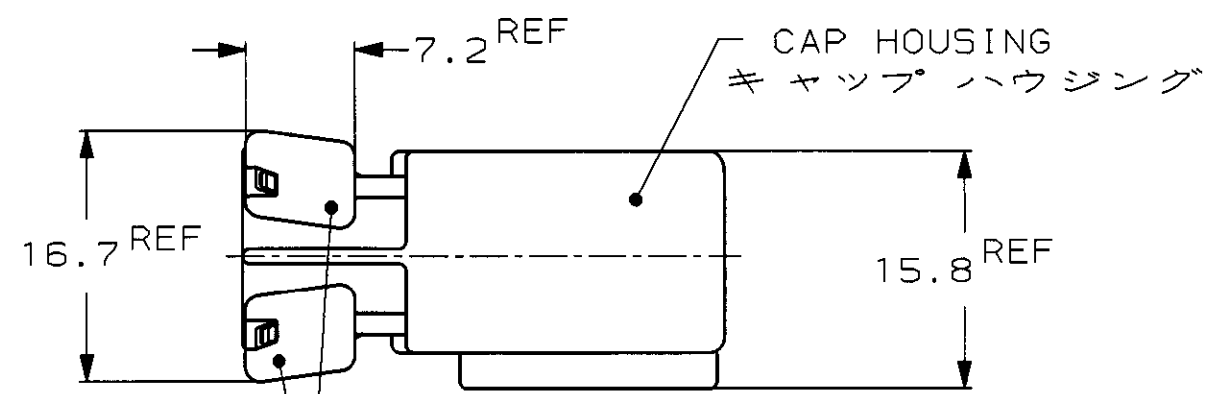
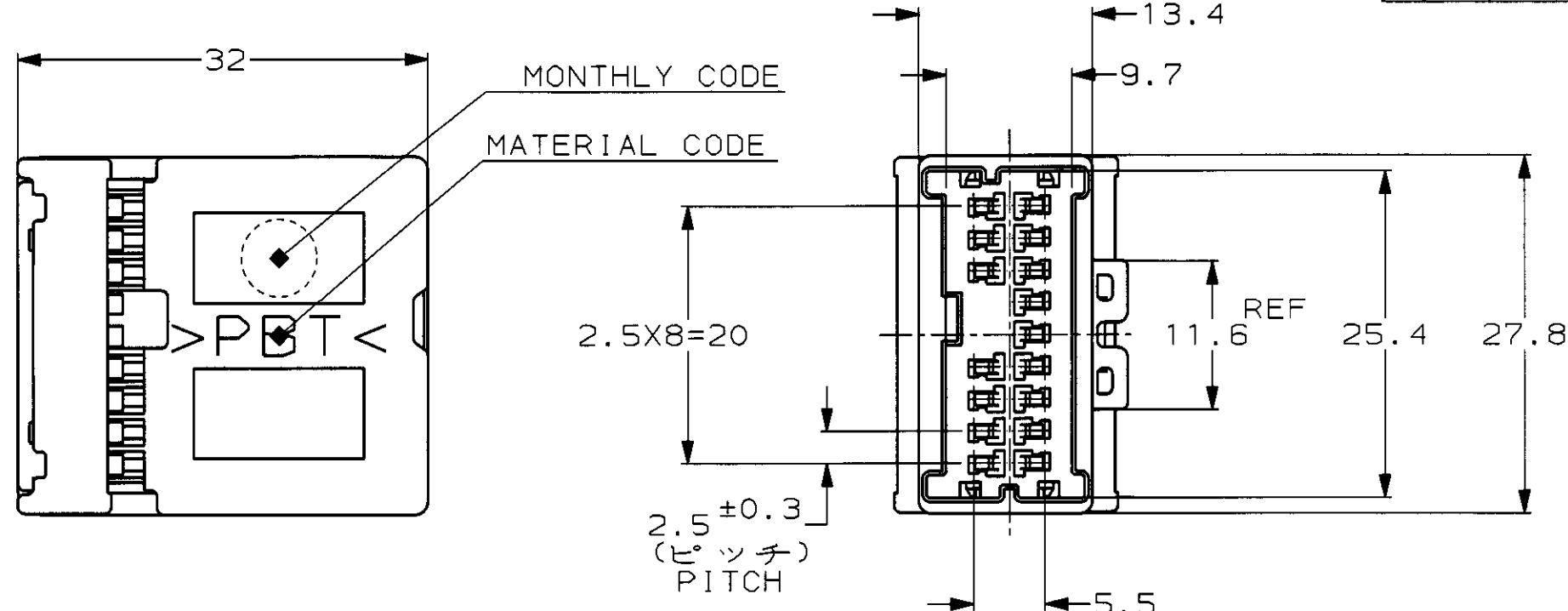
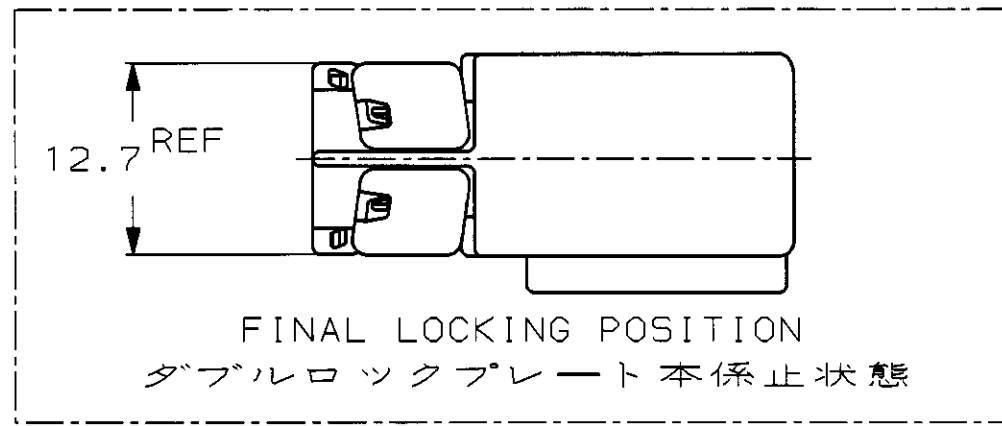


P	LTR	DESCRIPTION	ECN	DATE	DWN	APVD
	A	再作成 REDRAWN	FJ00-0506-98	10APR98	TM	MT
	B	変更 REVISED	FJ00-1797-99	29OCT99	KS	MT
	C	変更 REVISED	FJ00-2112-99	08DEC99	KS	MT



DOUBLE LOCK PLATE (NATURAL)  
ダブルロックプレート (自然色)



1123371-1	353537-1 353537-2 (Au)	自然色 (NATURAL)	1123350-1
嵌合相手ハウジング型番 MATING HOUSING PART NUMBER	適用端子型番 APPLICABLE CONTACT PART NUMBER	色 (COLOR)	型番 PART NUMBER
<small>THIS DRAWING IS A CONTROLLED DOCUMENT FOR AMP INCORPORATED. IT IS SUBJECT TO CHANGE AND THE CONTROLLING ENGINEERING ORGANIZATION SHOULD BE CONTACTED FOR THE LATEST REVISION.</small>		08APR98 T. MINEMATSU 08APR98 E. SASAKI 10APR98 M. TSUKAKOSHI	
DIMENSIONS: 単位: 概 mm	TOLERANCES UNLESS OTHERWISE SPECIFIED 一般公差 10% : ±0.2 30% : ±0.25 100% : ±0.3 ANGLE : ±0.3°	<b>AMP</b> 日本エー・エム・ピー株式会社 Kawasaki, Japan	
MATERIAL 材料 PBT		NAME 040III MULTILOCK CONNECTOR 16POSITION CAP HOUSING ASSEMBLY (WIRE TO WIRE) 040III マルチロック コネクタ 16極 キャップハウジング アッセンブリ (対電線用)	
FINISH 仕上		APPLICATION SPEC 取付適用規格 114-5228	WEIGHT 7.1g
CUSTOMER DRAWING		SIZE A3 CAGE CODE 00779 DRAWING NO. 1123350	RESTRICTED TO -
		SCALE 2:1 SHEET 1 OF 1	REV C