



SERIES JS1300 SWITCHES

NAVIGATION SWITCHES



SPECIFICATIONS

Contact Rating:	20mA @ 12 VDC
Life Expectancy:	200,000 actuations
Contact Resistance:	100mΩ MAX (INITIAL)
Insulation Resistance:	100MΩ
Dielectric Strength:	100 VAC
Operating Temperature:	-20°C to 70°C
Travel:	.25 ±.15 mm

MATERIALS

Cover:	Nickel
Base:	Nylon
Actuator:	Nylon
Terminals:	Copper alloy, silver plated
Moving Contact:	Stainless steel, silver plated
Tape:	Teflon

FEATURES & BENEFITS

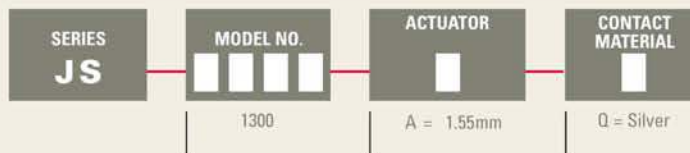
- ▶ 5-position navigation
- ▶ Very low profile SMT design
- ▶ Unique design

APPLICATIONS/MARKETS

- ▶ Consumer electronics where user interface is needed
- ▶ Handheld instrumentation
- ▶ Navigation
- ▶ Telecommunication



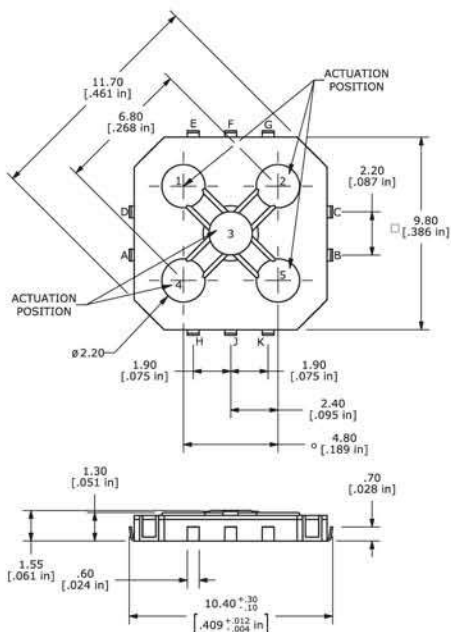
HOW TO ORDER



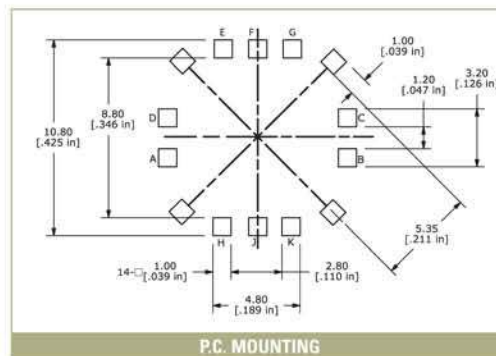
Example Ordering Number
JS1300AQ

Specifications subject to change without notice.

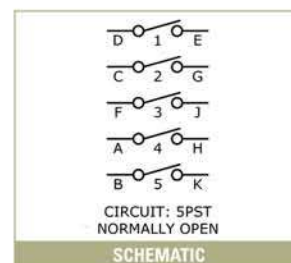
JS 1300



Actuation Position	Circuit
1	D - E
2	C - G
3 (Center)	F - J
4	A - H
5	B - K



P.C. MOUNTING



TACT SWITCHES

NAVIGATION SWITCHES

PUSHBUTTON SWITCHES

TOGGLE SWITCHES

ROCKER SWITCHES

SLIDE SWITCHES

SNAP-ACTION SWITCHES

DIP SWITCHES

KEYLOCK SWITCHES

ROTARY SWITCHES

DETECTOR SWITCHES

CAP OPTIONS