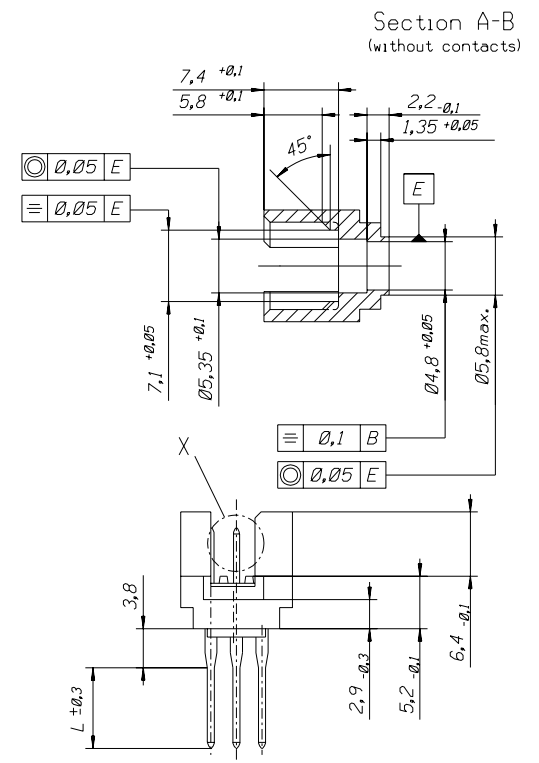
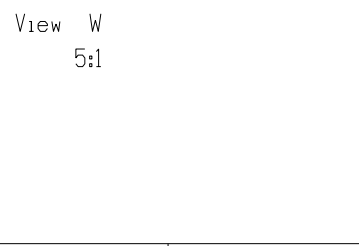
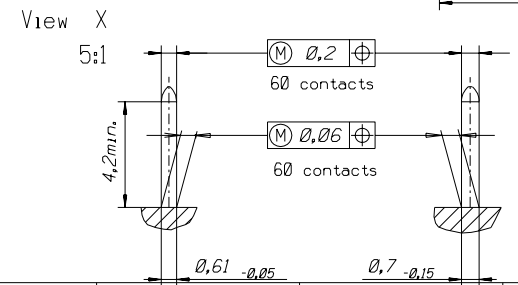
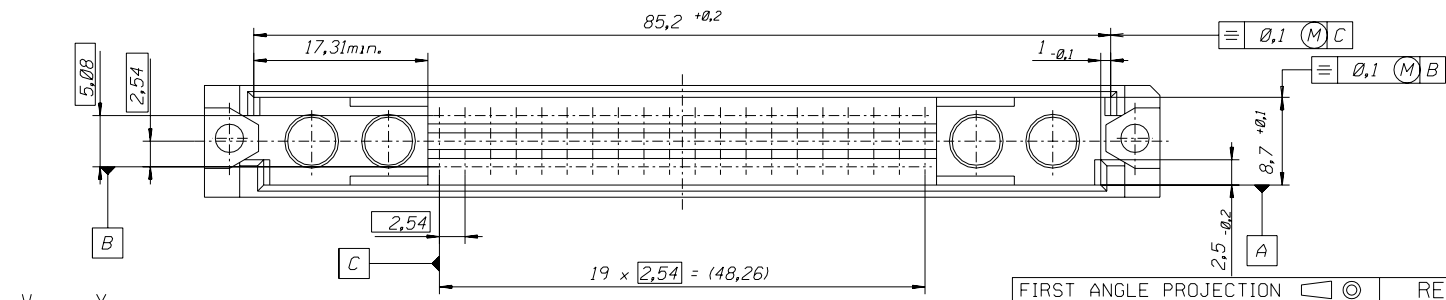
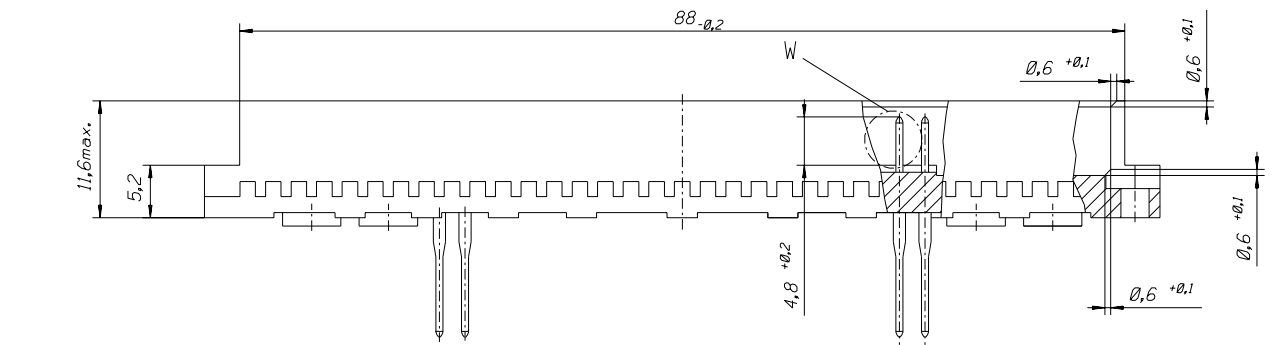
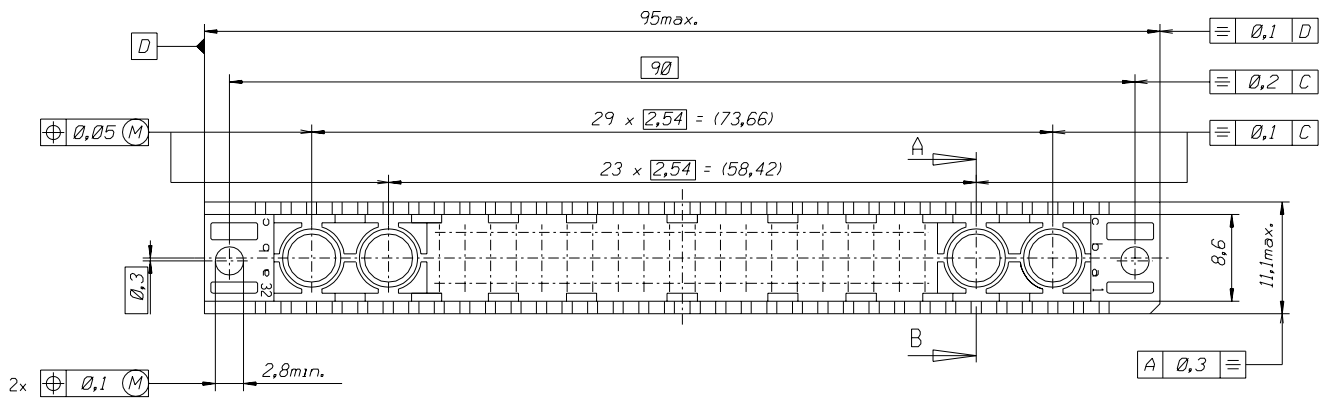
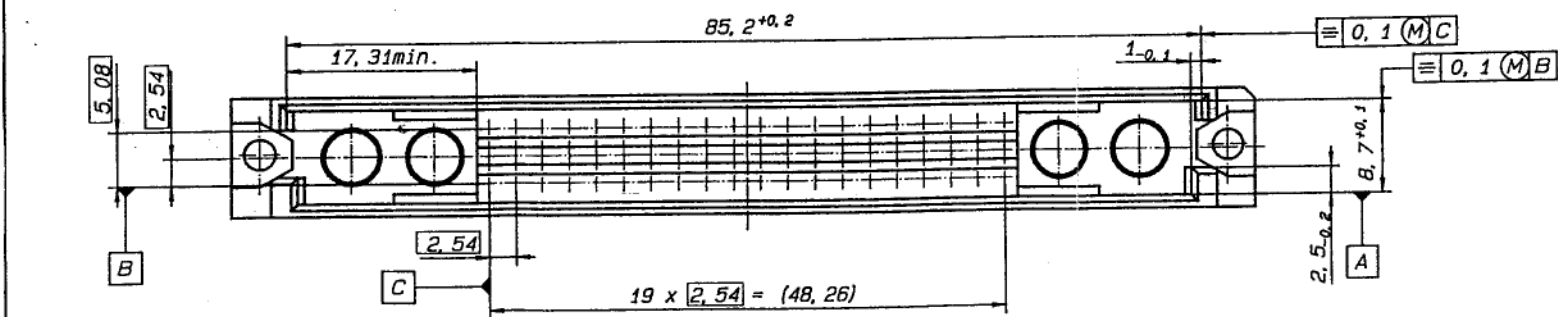
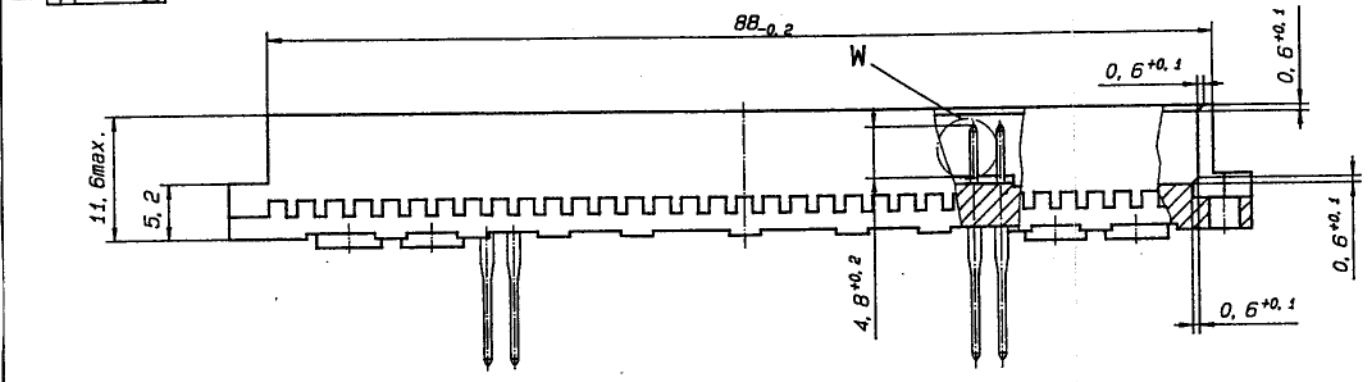
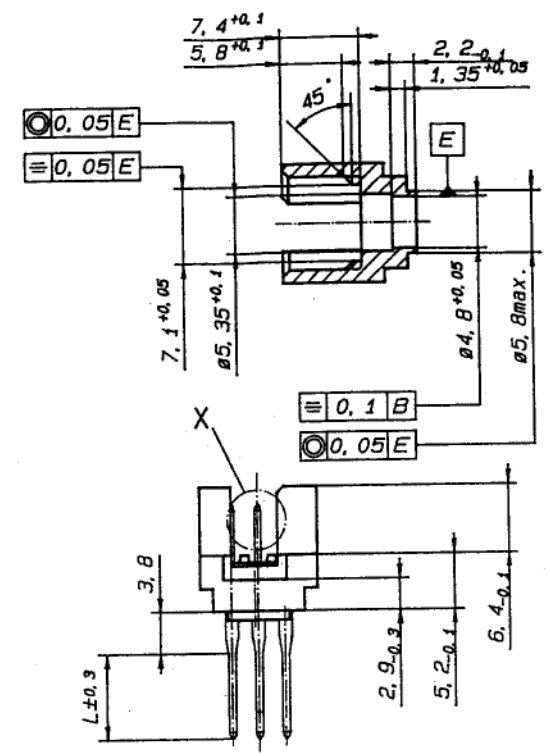
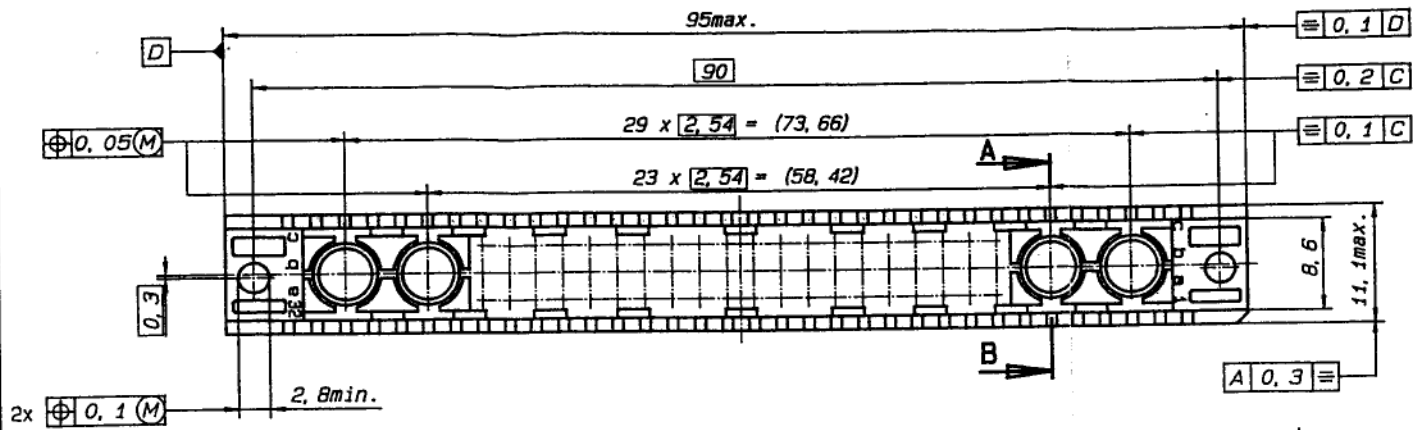


PART NO.
DWG. NO.

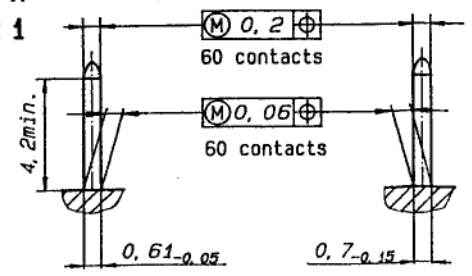


FIRST ANGLE PROJECTION		REVISE ONLY ON CAD SYSTEM		SH.	REV.
UNLESS OTHERWISE SPECIFIED TOLERANCES: ANGULAR ±2°		DRWG BY	SIGN	CAD/CAM PROJECT NAME	
INCH		Ca		60393231	
METRIC		CHK'D BY	SIGN	THIS DRAWING CONTAINS INFORMATION THAT IS PROPRIETARY TO MOLEX INC. & SHOULD NOT BE USED WITHOUT WRITTEN PERMISSION	
3 PLACE ± . ±		KN		TITLE	
2 PLACE ± . ±		APP'D BY	SIGN	60 pos. Male connector DIN 41612 style M (C-Pin) inverted / Dimensions	
1 PLACE ± . ±				MOLEX EUROPE	
DRAFT WHERE APPLICABLE MUST REMAIN WITHIN DIMENSIONS		SCALE		SHEET NO. DATE	
DESIGN DIMENSION <input type="checkbox"/> MM <input type="checkbox"/> IN.		2:1		1 OF 3 95/05/23	
EQUIVALENT DIMENSION <input type="checkbox"/> MM <input type="checkbox"/> IN.				PART NO. DWG NO. SIZE	
IF TWO DIMENSIONS ARE SHOWN THE UPPER IS THE DESIGN DIMENSION, LOWER IS SECONDARY				see sh. no. 2 of 3 603-6093-23 B	

Section A-B
(without contacts)



View X
5:1



View W
5:1

NO RELEASE
REFERENCE
USE ONLY

RoHS COMPLIANT

EC NO: 12066-0679 DRAWN BY: SHANKAR CHECKED BY: CHIKO SUDHIR APPROVED BY: JAPPA SUDHIR	QUALITY SYMBOLS	GENERAL TOLERANCES (UNLESS SPECIFIED)	DIMENSION STYLE	SCALE	DESIGN UNITS	THIRD ANGLE PROJECTION
	4 PLACES \pm 3 PLACES $\pm 0,05$ 2 PLACES $\pm 0,1$ 1 PLACE $\pm 0,15$ ANGULAR $\pm 2^\circ$	mm INCH	MM ONLY NTS METRIC	DRAWN BY: SHANKAR DATE: 2006/06/06 CHECKED BY: SSUDHIR DATE: 2006/06/06 APPROVED BY: SSUDHIR DATE: 2006/06/06	ASSY DIN 41612 STYLE M INVERTED, 60 POS MALE C-PIN CONNECTOR	MOLEX INCORPORATED
DRAFT WHERE APPLICABLE MUST REMAIN WITHIN DIMENSIONS		SEE SHEET 2 SD-85017-003		THIS DRAWING CONTAINS INFORMATION THAT IS PROPRIETARY TO MOLEX INCORPORATED AND SHOULD NOT BE USED WITHOUT WRITTEN PERMISSION		

60P-6093-0731-9	85017-0282	no	2	----- 2	1, 2, 3...20	a+b+c
60P-6093-0731-7	85017-0294	no	2	Wire wrap 13, 3	1, 2, 3...20	a+b+c
60P-6093-0731-6	85017-0268	no	2	Wire wrap 16, 4	1, 2, 3...20	a+b+c
60P-6093-072V-9	85017-0115	yes	2	----- 2	1, 2, 3...20	a+b+c
60P-6093-072V-8	85017-0103	yes	2	Wire wrap 9, 4	1, 2, 3...20	a+b+c
60P-6093-072V-7	85017-0098	yes	2	Wire wrap 13, 3	1, 2, 3...20	a+b+c
60P-6093-072V-6	85017-0086	yes	2	Wire wrap 16, 4	1, 2, 3...20	a+b+c
60P-6093-0722-9	85017-0024	no	1	----- 2	1, 2, 3...20	a+b+c
Engineering number	Ordering code	Molex std.	Perform. level hard gold acc. MIL-645204	Termination / L	Contact sequence / row	



RoHS COMPLIANT

EC NO: 12006-0679 DRAWN BY: SHANKAR CHECKED BY: SSUDHIR APPROVED BY: SSUDHIR DATE: 2006/06/06 DATE: 2006/06/06 DATE: 2006/06/06	QUALITY SYMBOLS	GENERAL TOLERANCES (UNLESS SPECIFIED)	DIMENSION STYLE	SCALE	DESIGN UNITS	THIRD ANGLE PROJECTION
	▽-0	mm INCH	MM ONLY	NTS	METRIC	<input checked="" type="checkbox"/> THIRD ANGLE PROJECTION
	▽-0	4 PLACES ±	DRAWN BY: SHANKAR	DATE: 2006/06/06	TITLE: ASSY DIN 41612 STYLE M INVERTED, 60 POS MALE C-PIN, CONNECTOR	
		3 PLACES ±	CHECKED BY: SSUDHIR	DATE: 2006/06/06	Molex MOLEX INCORPORATED	
	2 PLACES ±	APPROVED BY: SSUDHIR	DATE: 2006/06/06	DOCUMENT NO: SD-85017-003		
	1 PLACE ±			SHEET NO: 2 OF 3		
	ANGULAR ± °	DRAFT WHERE APPLICABLE MUST REMAIN WITHIN DIMENSIONS	SEE CHART	THIS DRAWING CONTAINS INFORMATION THAT IS PROPRIETARY TO MOLEX INCORPORATED AND SHOULD NOT BE USED WITHOUT WRITTEN PERMISSION		

1. General : Technical Data
60pos. Male connector acc.DIN 41612 style M inverted (C-Pin)
2. Material :
 - 2.1 Moulding material : Thermoplastic Polyester GV30 grey RAL 7032
 - 2.1.1 Moulding material
burning properties acc. to UL94 V0
 - 2.1.2 Resistance against solvents : good
 - 2.2 Pin contact : CuSn
 - 2.2.1 Contact plating : Performance level I or II (Test acc.DIN 41612 part.5)
3. Printing : Part.No., date of manufacturing



RoHS COMPLIANT

EC NO: 02006-0679 DRAWN BY: SHANKAR CHECKED BY: SSUDHIR APPROVED BY: SSUDHIR	2006/06/06 2006/06/06 2006/06/06	DUALITY SYMBOLS ▽=0 ▽-0	GENERAL TOLERANCES (UNLESS SPECIFIED)	DIMENSION STYLE		SCALE	DESIGN UNITS	THIRD ANGLE PROJECTION
				MM ONLY	NTS			
REV		DESCRIPTION		DRAWN BY		DATE		TITLE
A		A		SHANKAR		2006/06/06		
				CHECKED BY		DATE		MOLEX INCORPORATED
				SSUDHIR		2006/06/06		
				APPROVED BY		DATE		DOCUMENT NO.
				SSUDHIR		2006/06/06		
				MATERIAL NO.		SEE SHEET 2		SHEET NO. 3 OF 3
				SIZE		A1		
				DRAFT WHERE APPLICABLE MUST REMAIN WITHIN DIMENSIONS		THIS DRAWING CONTAINS INFORMATION THAT IS PROPRIETARY TO MOLEX INCORPORATED AND SHOULD NOT BE USED WITHOUT WRITTEN PERMISSION		