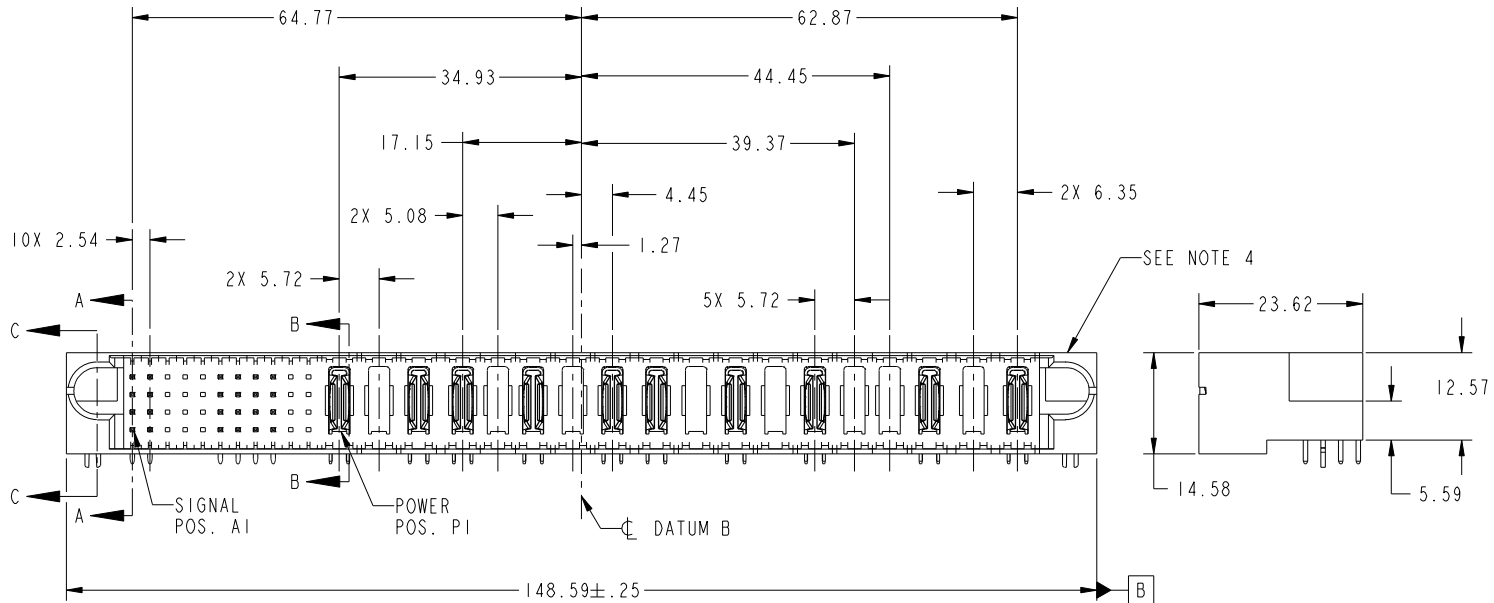


Tous droits strictement reserves. Reproduction ou communication a des tiers interdite sous quelque forme que ce soit sans autorisation écrite du propriétaire. Propriete de c FCI. Droits de reproduction FCI.



All rights strictly reserved. Reproduction or issue to third parties in any form whatever is not permitted without written authority from the proprietor. Property of FCI. Copyright FCI.

PRODUCT NO. 51939-112-- NOTE: 3	ROWS D C B A	SIGNAL											POWER																		E2
		E1	1	2	3	4	5	6	7	8	9	10	11	P1	P2	P3	P4	P5	P6	P7	P8	P9	P10	P11	P12	P13	P14	P15	P16	P17	
		UU	XX	XX	XX	UU	UU	UU	XX	XX	XX	XX	PA	X	PA	PA	X	PA	X	PA	PA	X	PA	X	PA	X	X	PA	X	PA	
		TT	XX	XX	XX	SS	SS	SS	XX	XX	XX	XX																			
		RR	XX	XX	XX	RR	RR	RR	XX	XX	XX	XX																			



CODE	DIM "M" MATING LENGTH	CONTACT TYPE
R	[6.86]	SIGNAL
S	[6.86]	SIGNAL
T	[6.86]	SIGNAL
U	[6.86]	SIGNAL
PA	[N/A]	POWER
HA	[N/A]	HOLD-DOWN
X	OMITTED	OMITTED

mat'l code				SEE NOTE		tolerances unless otherwise specified		CUSTOMER		FCI	
ltr	ecn no.	dr	date	linear	0.X ± 0.5	projection		COPY		www.fciconnect.com	
A	V04-0241	TAB	03/17/04	angles	0.XX ± 0.25	MIM		title		44S + 18P	
B	V04-0945	TAB	09/21/04		0.XXX ± 0.10	← MIM →		RIGHT ANGLE SOLDER HEADER		product family	
C	DG06-0013	RYAN	01/10/06		0° ± 2°	scale		PwrBlade		code	
D	DG08-0272	JW	09/27/08	dr	T. BRUNGARD 03/17/04	1:1		size		213	
				enrg	M. GRAY 03/17/04			dwg no		1 of 4	
				chr	M. GRAY 03/17/04			51939-112			
				appd	M. GRAY 03/17/04			A			
sheet index	revision sheet	D	D	D	D			cage code		22526	
1	2	3	4							4	

Pro/E

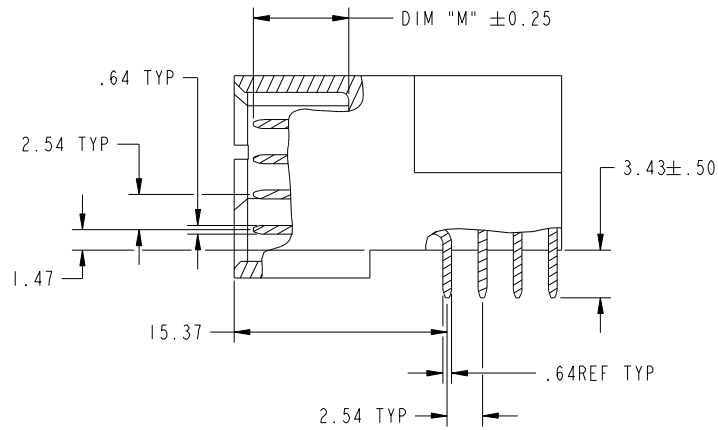
cage code 22526

Tous droits strictement reserves. Reproduction ou communication a des tiers interdite sous quelque forme que ce soit sans autorisation écrite du propriétaire. Propriete de c FCI. Droits de reproduction FCI.

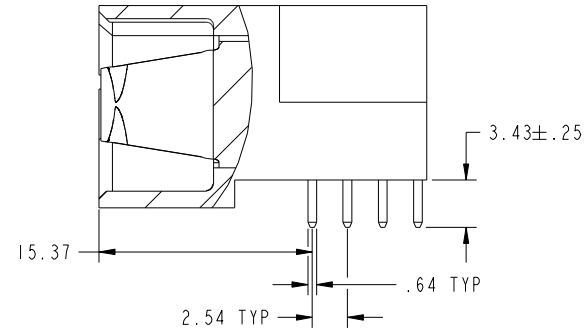


All rights strictly reserved. Reproduction or issue to third parties in any form whatever is not permitted without written authority from the proprietor. Property of FCI. Copyright FCI.

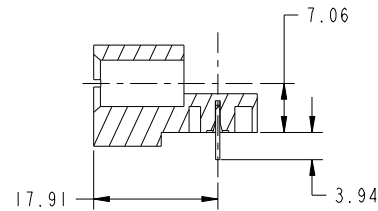
PRODUCT NUMBER
51939-112--
NOTE: 3



BROKEN-OUT SECTION A-A
SCALE 2:1



BROKEN-OUT SECTION B-B
SCALE 2:1



SECTION C-C

mat'l code		SEE NOTE		tolerances unless otherwise specified		CUSTOMER		www.fciconnect.com	
ltr	ecr no.	dr	date	linear	0.X ±0.5	COPY		title	
D					0.XX ±0.25	projection		44S + 18P	
				angles	0.XXX ±0.10			RIGHT ANGLE SOLDER HEADER	
				dr	0° +2°			product family PwrBlade code	
				enr	T. BRUNGARD 03/17/04	scale		size	
				chr	M. GRAY 03/17/04	1:1		dwg no	
				appd	M. GRAY 03/17/04	A		51939-112	
sheet index	revision sheet							sheet	
								2	

cage code 22526

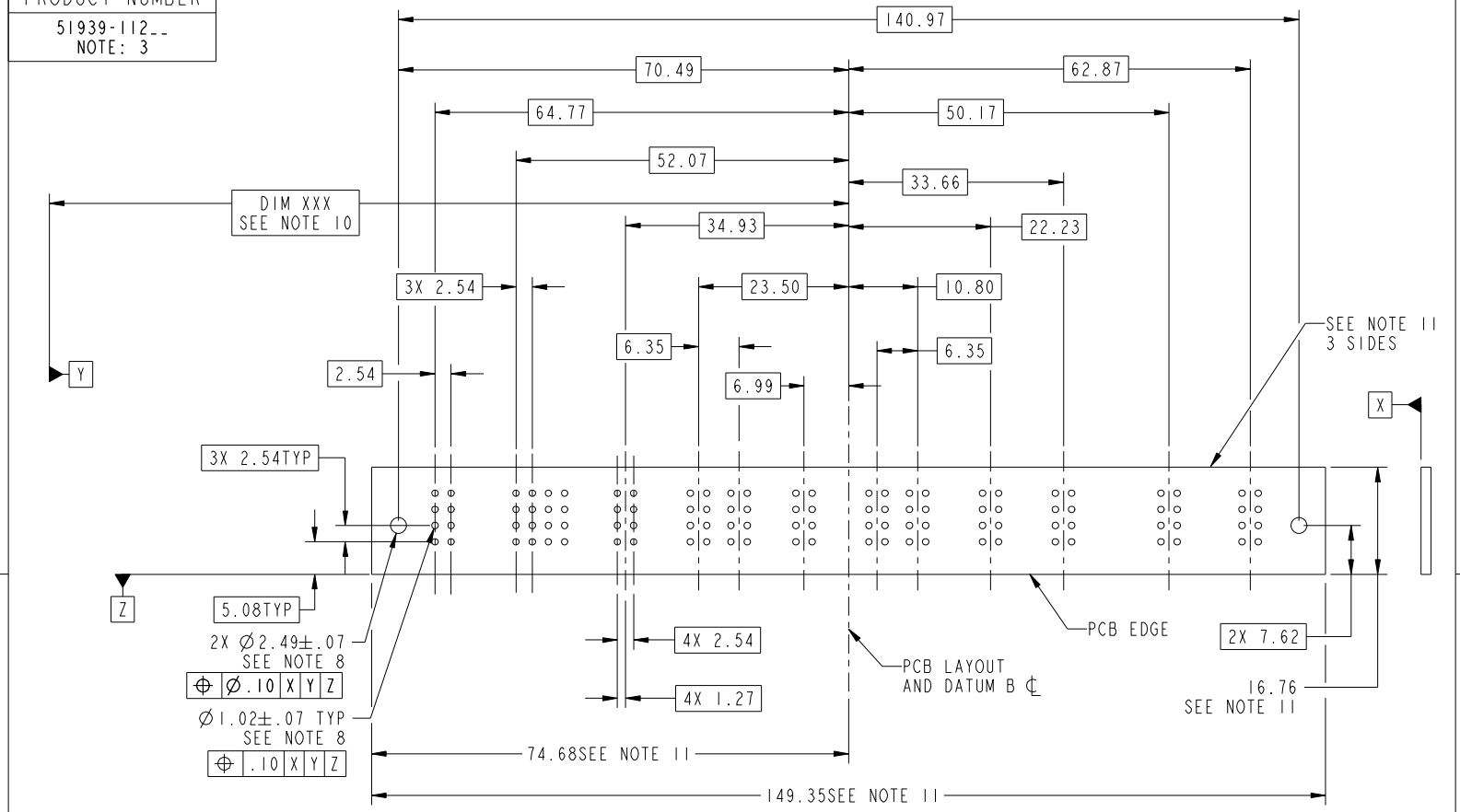
Pro/E

Tous droits strictement reserves. Reproduction ou communication a des tiers interdite sous quelque forme que ce soit sans autorisation écrite du propriétaire. Propriete de c FCI. Droits de reproduction FCI.



All rights strictly reserved. Reproduction or issue to third parties in any form whatever is not permitted without written authority from the proprietor. Property of FCI. Copyright FCI.

PRODUCT NUMBER
51939-112--
NOTE: 3



RECOMMENDED PCB LAYOUT

mat'l code				SEE NOTE		tolerances unless otherwise specified		CUSTOMER		www.fciconnect.com	
ltr	ecn no.	dr	date	linear	0.X ±0.5		COPY		title 44S + 18P RIGHT ANGLE SOLDER HEADER		
D					0.XX ±0.25		projection				
					angles	0.XXX ±0.10				PwrBlade	
				dr	T. BRUNGARD	03/17/04	MIM		size	dwg no	sheet
				enr	M. GRAY	03/17/04			A	51939-112	3
				chr	M. GRAY	03/17/04	scale		1:1		
				appd	M. GRAY	03/17/04					
sheet index	revision sheet										

cage code 22526

Pro/E

Tous droits strictement reserves. Reproduction ou communication a des tiers interdite sous quelque forme que ce soit sans autorisation écrite du propriétaire. Propriete de c FCI. Droits de reproduction FCI.



All rights strictly reserved. Reproduction or issue to third parties in any form whatever is not permitted without written authority from the proprietor. Property of FCI. Copyright FCI.

PRODUCT NUMBER
51939-112--
NOTE: 3

NOTES:

1. DIMENSIONS AND TOLERANCES ARE IN ACCORDANCE WITH ASME Y14.5M, 1994 UNLESS OTHERWISE SPECIFIED.

CONNECTOR NOTES:

2. HOUSING MATERIAL: UL 94 V-0 GLASS FILLED
HIGH-TEMP THERMOPLASTIC
POWER CONTACT MATERIAL: COPPER ALLOY
SIGNAL PIN MATERIAL: COPPER ALLOY

3. PLATING:
SEE ITEM 1&2 IN PRINT 10064183 FOR PLATING SPEC OF 51939-112; 51939-112LF PRESPECTIVELY

4. MANUFACTURER'S NAME, P/N, AND DATE CODE TO APPEAR ON THIS SURFACE.

5. PRODUCT SPECIFICATION GS-12-149.
APPLICATION SPECIFICATION BUS-20-067.

6. PACKAGED IN TRAYS.

PCB NOTES:

7. ALL HOLE DIAMETERS ARE FINISHED HOLE SIZE.

8. MOUNTING HOLES, WHERE APPLICABLE, ARE UNPLATED.

9. $\varnothing 1.151 \pm 0.025$ DRILLED HOLES PLATED WITH 0.008 MIN SnPb OR Sn OVER 0.03 TO 0.08 Cu PLATING TO ACHIEVE $\varnothing 1.02 \pm .07$ HOLE.

10. "DIM XXX" TO BE DETERMINED BY THE CUSTOMER.

11. CONNECTOR KEEP-OUT ZONE.

12. A Δ SYMBOL WILL BE NEXT TO ANY DIMENSION, VIEW, OR NOTE WHICH HAS BEEN MODIFIED WITH THE CURRENT DRAWING REVISION.

mat'l code		SEE NOTE		tolerances unless otherwise specified		CUSTOMER		FCI www.fciconnect.com	
ltr	ecn no.	dr	date	linear	0.X ± 0.5	COPY		title	
D					0.XX ± 0.25	projection		44S + 18P RIGHT ANGLE SOLDER HEADER	
				angles	0.XXX ± 0.10			product family PwrBlade code	
				dr	0° + 2°			size	
				enr	T. BRUNGARD 03/17/04	scale		213	
				chr	M. GRAY 03/17/04	1:1		sheet	
				appd	M. GRAY 03/17/04	A		4	
sheet index	revision sheet							cage code	
								22526	

1 | 2

3 |

4

1 | 2

Pro/E

3 |

cage code 22526

4