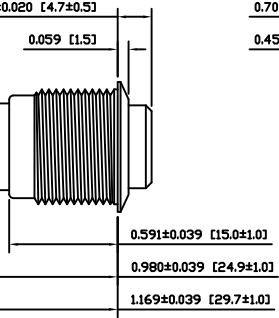
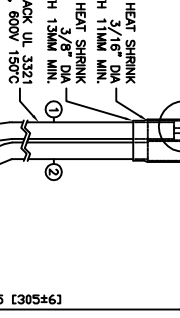


0.709 [18.0]
0.453 [11.5]



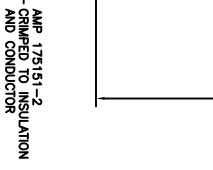
0.185±0.020 [4.7±0.5]
0.059 [1.5]

0.591±0.039 [15.0±1.0]
0.980±0.039 [24.9±1.0]
1.169±0.039 [29.7±1.0]



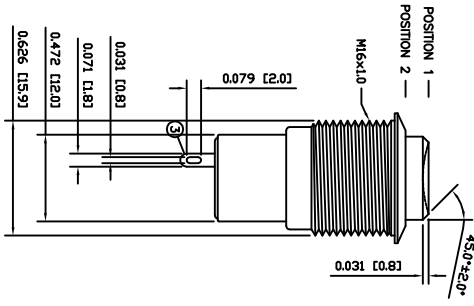
HEAT SHRINK
LENGTH 11MM MIN.
HEAT SHRINK
LENGTH 13MM MIN.
3/8 DIA
BLACK UL 3321
AWG 22, 600V 150°C

12.0±.25 [305±6]



AMP 175151-2
CRIMPED TO INSULATION
AND CONDUCTOR

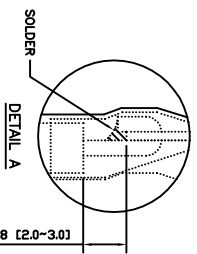
AMP 176271-1



0.079 [2.0]
45.0°±2.0°
0.031 [0.8]
M16x1.0

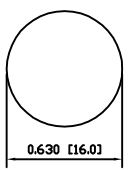
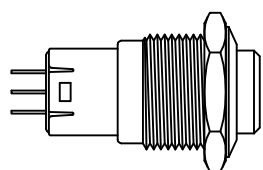
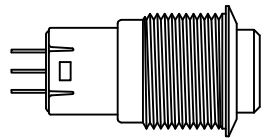
POSITION 1
POSITION 2

0.031 [0.8]
0.071 [1.8]
0.472 [12.0]
0.626 [15.9]

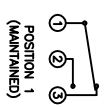


SOLDER
DETAIL A

0.079-0.118 [2.0-3.0]



SUGGESTED PANEL CUTOUT
MAXIMUM PANEL THICKNESS: 0.315 [8.0mm]

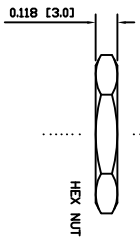


SUGGESTED PANEL CUTOUT

SCHEMATIC

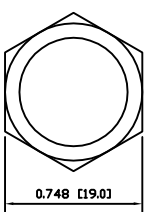
SPECIFICATIONS

FUNCTION:
1P2T ON-ON
RATING:
-003-SQF1-2000 (200901C07839):
2A 490°C [IND]
CONTACT RESISTANCE:
Initial: 50mΩ Max. at 1A 120°C
1,500mΩ Min. at 500VDC
INSULATION RESISTANCE:
2,000VAC Min. for 1 Minute
ELECTRICAL LIFE:
50,000 Cycles
MECHANICAL LIFE:
200,000 Cycles
TEMPERATURE:
Operating: -25°C to 85°C
APPROVALS:
NDP
COMPLIANT



0.118 [3.0]
HEX NUT

EXPLODED VIEW



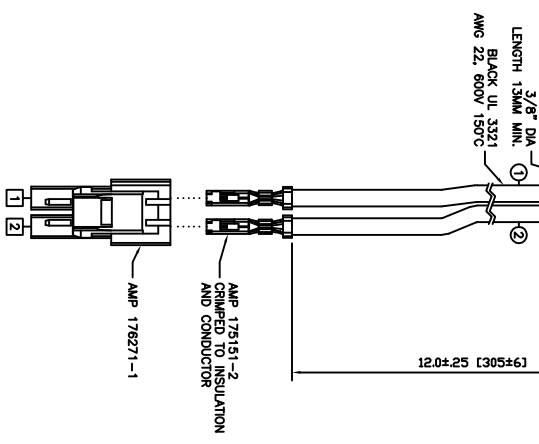
0.748 [19.0]
ASSEMBLED VIEW

COLORS AND FINISH

BEZEL:
Stainless Steel
Polished Finish
ACTUATOR:
Stainless Steel
Polished Finish
ILLUMINATION:
None
MARKING:
None

MATERIALS

BUSING:
Stainless Steel (304)
BASE:
Polybutylene Terephthalate (PBT)
ACTUATOR:
Stainless Steel (304)
Polycarbonate (PC)
INNER ASSEMBLY:
Polyoxymethylene (POM)
Polycarbonate (PC)
Polybutylene Terephthalate (PBT)
Silver Plated Brass (H62)
Beryllium Copper
SPRING:
Stainless Steel (304)
CONTACTS:
Silver/Cadmium Oxide (AgCdO)
TERMINALS:
Silver Plated Brass (H62)



1
2

A B C D

A B C D

REV.	DATE	BY	CHK
1	10/07/28	CAB	
2	09/07/10	CAB	
3	10/07/11	CAB	
4	09/12/23	CAB	

THE INFORMATION CONTAINED IN THIS DOCUMENT IS PROPRIETARY TO E-SWITCH AND IS NOT TO BE COPIED OR TRANSMITTED IN ANY FORM OR BY ANY MEANS, ELECTRONIC OR MECHANICAL, INCLUDING PHOTOCOPYING, RECORDING, OR BY ANY INFORMATION STORAGE AND RETRIEVAL SYSTEM.

REV.	DATE	BY	CHK
1	2014	11/09/13	BGL
2	2022	11/09/23	CAB
3			BY

INCHES [MILLIMETERS]	SCALE
±0.008 [±0.2] / ±1'	DRAWING NOT TO SCALE

E-SWITCH
LAMB INDUSTRIES

ITEM NUMBER: PV3SZ01Z1330SS
DATE: JUNE 23, 2011
REVISION: B