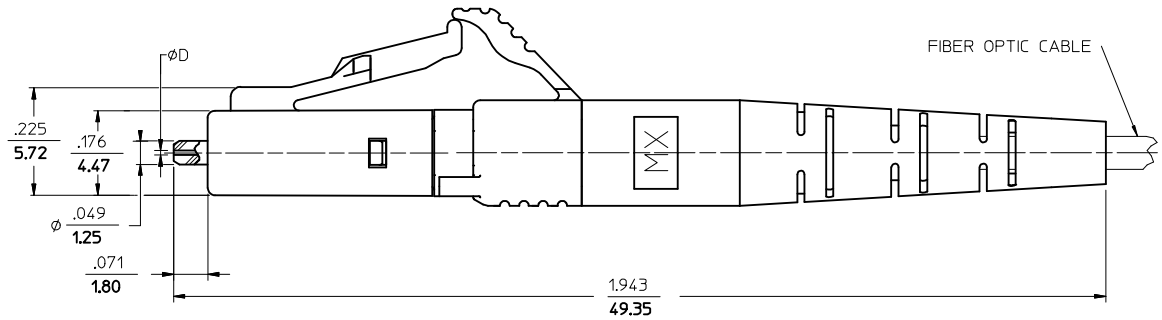
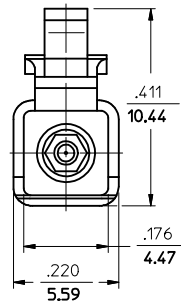


CONNECTOR P/N	ØD (4m)	BOOT COLOR	CABLE DESCRIPTION & Ø (mm)	CABLE TYPE
106024-2000	125.50	WHITE	SIMPLEX 1.6	SINGLE MODE
106024-2300			SIMPLEX 2.0	
			ZIPCORD 1.6	
106024-3000	127.00		SIMPLEX 1.6	MULTIMODE
106024-3300			SIMPLEX 2.0	
106024-3310*			ZIPCORD 1.6	
106024-3320				
106024-3390	125.00		SIMPLEX 1.6	SINGLE MODE
106024-4000			SIMPLEX 2.0	
106024-4300			ZIPCORD 1.6	
106024-430*	126.00		SIMPLEX 1.6	SINGLE MODE
106024-5000			SIMPLEX 2.0	
106024-5300		ZIPCORD 1.6		
106024-5310*	125.25	SIMPLEX 1.6	SINGLE MODE	
106024-6000		SIMPLEX 2.0		
106024-6300		ZIPCORD 1.6		
106090-4250	125.10-125.50	SIMPLEX 1.6	SINGLE MODE	
106090-4260		SIMPLEX 2.0		
106090-4270		ZIPCORD 1.6		
106090-4280	125.51-125.90	SIMPLEX 1.6	SINGLE MODE	
106090-2900		SIMPLEX 2.0		
106090-2930		ZIPCORD 1.6		
106090-4100	125.50	SIMPLEX 1.6	SINGLE MODE	
106090-4100		SIMPLEX 2.0		
106090-4130		ZIPCORD 1.6		
106090-6100	125.00	SIMPLEX 1.6	SINGLE MODE	
106090-6100		SIMPLEX 2.0		
106090-6130		ZIPCORD 1.6		
106090-6100	125.25	SIMPLEX 1.6	SINGLE MODE	
106090-6130		SIMPLEX 2.0		
106090-6135		ZIPCORD 1.6		
106024-3100	126.00		SIMPLEX 2.0	MULTIMODE
			ZIPCORD 1.6	



NOTES:

- 1. DUST CAPS ARE NOT SHOWN BUT INCLUDED.
- *2. P/N 106024-4301, 106024-3310 AND 106024-5310 ARE BULK PACKED.

ENTER DESCRIPTION EC NO: MF2013-0244 DRW:KPEVZNER 2012/10/29 CHKD: APPR:IGJMIN 2012/10/31	QUALITY SYMBOLS	GENERAL TOLERANCES (UNLESS SPECIFIED)	DIMENSION STYLE	SCALE	DESIGN UNITS	THIRD ANGLE PROJECTION
	▽=0	mm INCH	IN/MM	4:1	INCH	
	▽=0	4 PLACES ± --- ± ---	DRAWN BY DATE	TITLE		
		3 PLACES ± --- ± ---	PGIBLIN 2005.09.01	LC CONNECTOR		
	2 PLACES ± --- ± ---	CHECKED BY DATE	molex			
	1 PLACE ± --- ± ---	APPROVED BY DATE	SD-1060RR-RRRR			
	0 PLACE ± ±		SHEET NO. 1 OF 1			
		ANGULAR ±1/2°	THIS DRAWING CONTAINS INFORMATION THAT IS PROPRIETARY TO MOLEX INCORPORATED AND SHOULD NOT BE USED WITHOUT WRITTEN PERMISSION			
		DRAFT WHERE APPLICABLE MUST REMAIN WITHIN DIMENSIONS				