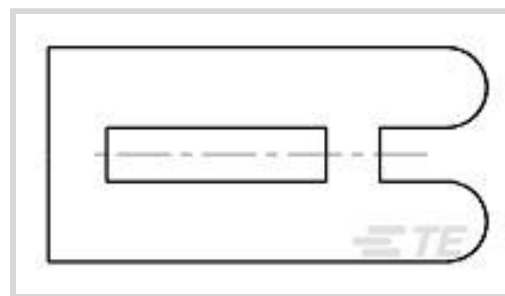




Connectors > PCB Connectors > PCB Connector Accessories > PCB Connector Keying



Connector Keying Accessory Type: **Keying Plug**

Features

Product Type Features

| | |
|---------------------------------|-------------|
| Connector Keying Accessory Type | Keying Plug |
|---------------------------------|-------------|

Packaging Features

| | |
|------------------|-----|
| Packaging Method | Bag |
|------------------|-----|

Product Compliance

[For compliance documentation, visit the product page on TE.com>](#)

| | |
|---|--|
| EU RoHS Directive 2011/65/EU | Compliant |
| EU ELV Directive 2000/53/EC | Compliant |
| China RoHS 2 Directive MIIT Order No 32, 2016 | No Restricted Materials Above Threshold |
| EU REACH Regulation (EC) No. 1907/2006 | Current ECHA Candidate List: JUNE 2023 (235) Candidate List Declared Against: JAN 2023 (233) Does not contain REACH SVHC |
| Halogen Content | BFR/CFR/PVC Free, but Br/Cl >900 ppm in other sources. |
| Solder Process Capability | Not applicable for solder process capability |

Product Compliance Disclaimer

This information is provided based on reasonable inquiry of our suppliers and represents our current actual knowledge based on the information they provided. This information is subject to change. The part numbers that TE has identified as EU RoHS compliant have a maximum concentration of 0.1% by weight in homogenous materials for lead, hexavalent chromium, mercury, PBB, PBDE, DBP, BBP, DEHP, DIBP, and 0.01% for cadmium, or qualify for an exemption to these limits as defined in the Annexes of Directive 2011/65/EU (RoHS2). Finished electrical and electronic equipment products will be CE marked as required by Directive 2011/65/EU. Components may not be CE marked. Additionally, the part numbers that TE has identified as EU ELV compliant have a maximum concentration of 0.1% by weight in homogenous materials for lead, hexavalent chromium, and mercury, and 0.01% for cadmium, or qualify for an exemption to these limits as defined in the Annexes of Directive 2000/53/EC (ELV). Regarding the REACH Regulation, the information TE provides on SVHC in articles for this part number is based on the latest European Chemicals Agency (ECHA) 'Guidance on requirements for substances in articles' posted at this URL: <https://echa.europa.eu/guidance-documents/guidance-on-reach>

Compatible Parts



TE Part # 926476-3
MOD 4 HSG



TE Part # 926476-8
MOD 4 HSG



TE Part # 926475-3
03P MODU 4 HSG.S.R.



TE Part # 926475-4
MOD 4 HSG



TE Part # 926476-6
MOD 4 HSG



TE Part # 926475-8
MOD 4 HSG



TE Part # 1-926475-0
MOD 4 HSG



TE Part # 1-926476-7
MOD 4 HSG



TE Part # 926475-7
MOD 4 HSG



TE Part # 926475-5
MOD 4 HSG



TE Part # 926475-6
MOD IV HSG SR 6 POS



TE Part # 926476-5
MOD 4 HSG



TE Part # 1-926476-3
MOD 4 HSG



TE Part # 926476-4
2X4P MODU 4 HSG.



TE Part # 926476-7
MOD 4 HSG



TE Part # 1-926476-0
MOD 4 HSG



TE Part # 3-926475-0
MOD 4 HSG



TE Part # 926476-9
MOD 4 HSG



TE Part # 1-926475-2
MOD 4 HSG



TE Part # 1-926475-3
MOD 4 HSG

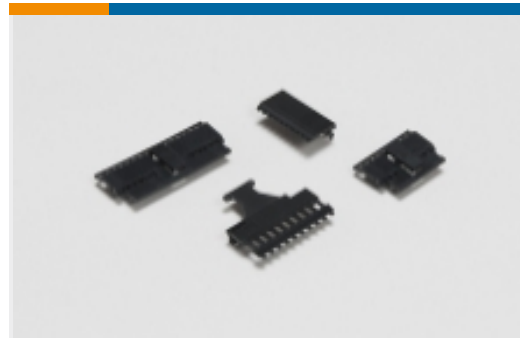
Also in the Series | Modu Connector System



Automotive Housings(2)



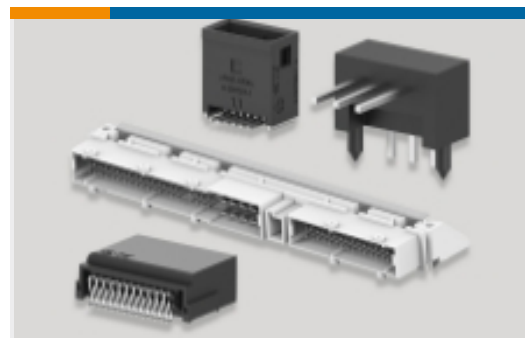
Board-to-Board Jumpers & Shunts(5)



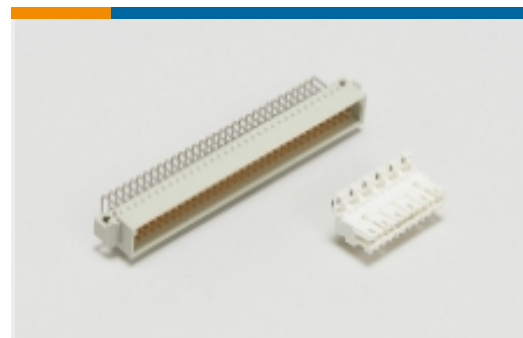
PCB Connector Covers(4)



PCB Connector Keying(4)



PCB Headers & Receptacles(1245)



Standard Edge Connectors(2)

Customers Also Bought



TE Part #926475-3
03P MODU 4 HSG.S.R.



TE Part #826467-3
3P MOD II SHROUDED HEADER, ST



TE Part #8-1879215-4
CPF 0402 34K 0.1% 25PPM 1K RL



TE Part #3-1879215-2
CPF 0402 8K66 0.1% 25PPM 1K RL



TE Part #5-2301996-1
RJ45 JACK INT.MAG. 10/100 1X2 INV.



TE Part #826468-4
4P MOD II SHROUDED HEADER, RT ANG.



TE Part #826469-6
2X6P MOD II SHROUDED HEADER, ST

Documents

Product Drawings

[KEYING PART](#)

English

CAD Files

[Customer View Model](#)

[ENG_CVM_926498-1_1.3d_igs.zip](#)



English

Customer View Model

[ENG_CVM_926498-1_1.3d_stp.zip](#)

English

Customer View Model

[ENG_CVM_926498-1_1.2d_dxf.zip](#)

English

[3D PDF](#)

[3D](#)

By downloading the CAD file I accept and agree to the [Terms and Conditions](#) of use.

Product Specifications

[Product Specification](#)

English

Product Environmental Compliance

[MD_926498-1_11102017118_dmtec](#)

English

[MD_926498-1_11102017118_dmtec](#)

English