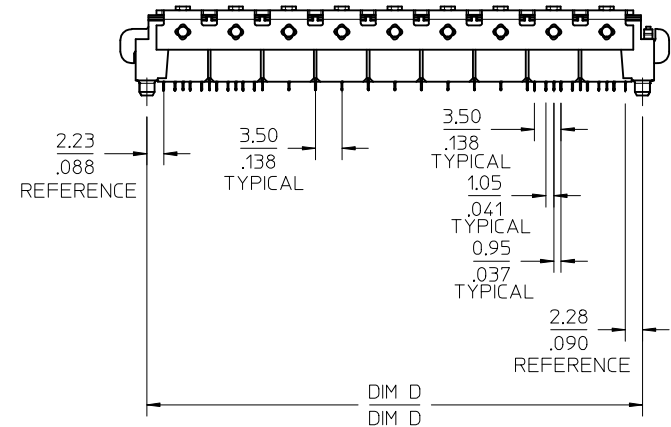
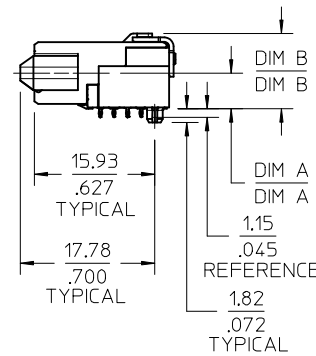
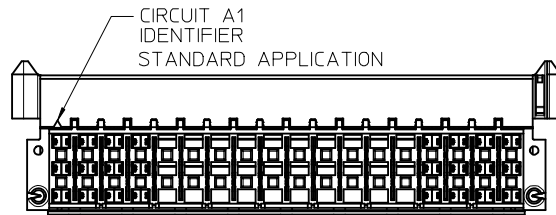
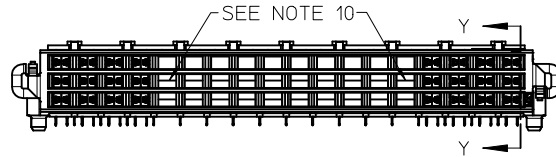


CIRCUIT A1
IDENTIFIER
INVERTED APPLICATION

MARKING
SEE NOTE 13



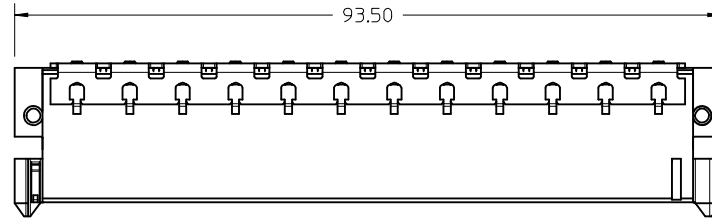
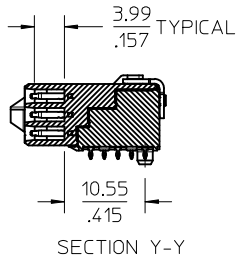
NOTES:

- 1) MATERIALS:
HOUSING - LIQUID CRYSTAL POLYMER, UL94 V-0
WAFER DIELECTRIC - LIQUID CRYSTAL POLYMER, UL94 V-0
CONTACT - COPPER ALLOY
CLIPS - STAINLESS STEEL
- 2) FINISHES: SEE SHEET 2
- 3) PRODUCT SPECIFICATION: THIS PART CONFORMS TO MOLEX SPECIFICATION PS-74148-0000.
- 4) PACKAGING SPECIFICATION: THIS PART TO BE PACKAGED PER SPECIFICATION PK-75020-030.
- 5) APPLICATION SPECIFICATION: THIS PART TO BE APPLIED PER SPECIFICATION AS-74148-0000. APPLICATION TOOL AND INSTRUCTIONS PER AS-74148-0000.
- 6) MATING INFORMATION
THIS PART MATES WITH 74148-XXXX (108 CIRCUIT).
WILL MATE WITH MAXIMUM OF 1.27mm MIS-ALIGNMENT
WILL MATE WITH MAXIMUM 0.75° MIS-ALIGNMENT
- 7) ORIENTATION
THIS PART CAN BE USED IN A STANDARD OR INVERTED ORIENTATION (I.E. ROTATED 180°)
- 8) SEE SHEET 3 FOR PCB LAYOUT INFORMATION
- 9) SEE SHEET 4 FOR CIRCUIT DESIGNATION
- 10) CIRCUITS IN THIS ZONE HAVE BEEN OMITTED TO SIMPLIFY THE MODEL. ACTUAL PRODUCT IS FULLY LOADED WITH TERMINALS
- 11) APPLICATION TOOLING KEEP OUT AREA. NO COMPONENTS ALLOWED IN THIS AREA.
- 12) CONFORMS TO MOLEX COSMETIC SPECIFICATION PS-45499-002 AND PS-45499-003.
- 13) MARKING: PART NUMBER, MX, DDD
- 14) RECOMMENDED DRILL SIZE 0.48±0.03 TO YIELD FINISHED PLATED THROUGH HOLE 0.39±0.05
- 15) HOLD DOWN SCREWS ARE RECOMMENDED FOR THIS CONNECTOR.
REFERENCE MOLEX DOCUMENT AS-74148-0000 SECTION 4.5.

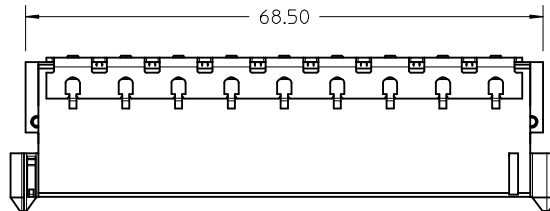
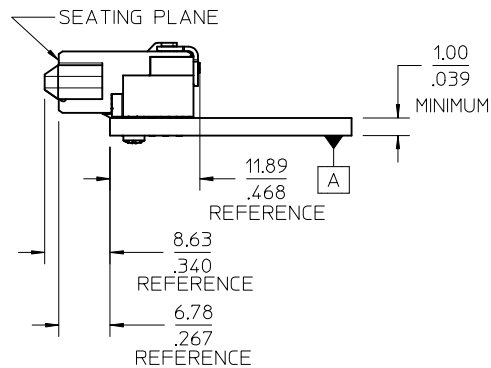
ADD NOTE 15 / MOD VIEWS EC NO: UCP2015-2894 DRWN:MPOFF 2013/08/29 CHKD:BBARKER 2015/01/19 APPR:SMILLER 2015/01/29	QUALITY SYMBOLS 	GENERAL TOLERANCES (UNLESS SPECIFIED)		DIMENSION STYLE		SCALE	DESIGN UNITS	THIRD ANGLE PROJECTION			
				MM/IN		2:1	METRIC				
				DRAWN BY DATE		TITLE		HS DOCK+ FLOATING CONNECTOR molex			
				MPOFF 2012/09/19		CHECKED BY DATE					
		2 PLACES ±0.13 ±.01		TIBARRA 2012/09/19		APPROVED BY DATE		DOCUMENT NO.			
		1 PLACE ±0.25 ±.---		SMILLER 2012/10/01		MATERIAL NO.		SD-74149-0001			
		0 PLACE ± ±				ANGULAR ±1/2°		SHEET NO.			
						DRAFT WHERE APPLICABLE MUST REMAIN WITHIN DIMENSIONS		1 OF 5			
						SIZE C		THIS DRAWING CONTAINS INFORMATION THAT IS PROPRIETARY TO MOLEX INCORPORATED AND SHOULD NOT BE USED WITHOUT WRITTEN PERMISSION			

ITEM NUMBER	CIRCUIT SIZE	NO. OF COLUMNS 'N'	CENTERLINE DIMENSION 'A' mm(in)	O/A HEIGHT DIMENSION 'B' mm(in)	O/A LENGTH DIMENSION 'C' mm(in)	PEG TO PEG DIMENSION 'D' mm(in)	FIRST-LAST SIGNAL DIMENSION 'E' mm(in)	FIRST-LAST GROUND DIMENSION 'F' mm(in)	PLATING FINISH	HOUSING FINISH	GROUND OPTION
74149-1001	144	24	4.74 (.187)	9.98 (.393)	93.50 (3.681)	86.51 (3.406)	82.00 (3.228)	77.00 (3.031)	OPTION 1	NICKEL	2 TAIL
74149-1101	144	24	4.74 (.187)	9.98 (.393)	93.50 (3.681)	86.51 (3.406)	82.00 (3.228)	77.00 (3.031)	OPTION 1	NICKEL	3 TAIL
74149-3001	144	24	4.74 (.187)	9.98 (.393)	93.50 (3.681)	86.51 (3.406)	82.00 (3.228)	77.00 (3.031)	OPTION 2	GOLD	2 TAIL
74149-3101	144	24	4.74 (.187)	9.98 (.393)	93.50 (3.681)	86.51 (3.406)	82.00 (3.228)	77.00 (3.031)	OPTION 2	GOLD	3 TAIL
74149-4002	108	18	4.74 (.187)	9.98 (.393)	72.50 (2.854)	65.51 (2.579)	61.00 (2.402)	56.00 (2.205)	OPTION 1	NICKEL	2 TAIL
74149-4102	108	18	4.74 (.187)	9.98 (.393)	72.50 (2.854)	65.51 (2.579)	61.00 (2.402)	56.00 (2.205)	OPTION 1	NICKEL	3 TAIL
74149-5002	108	18	4.74 (.187)	9.98 (.393)	72.50 (2.854)	65.51 (2.579)	61.00 (2.402)	56.00 (2.205)	OPTION 2	GOLD	2 TAIL
74149-5102	108	18	4.74 (.187)	9.98 (.393)	72.50 (2.854)	65.51 (2.579)	61.00 (2.402)	56.00 (2.205)	OPTION 2	GOLD	3 TAIL

144 CKT



108 CKT



FINISHES:

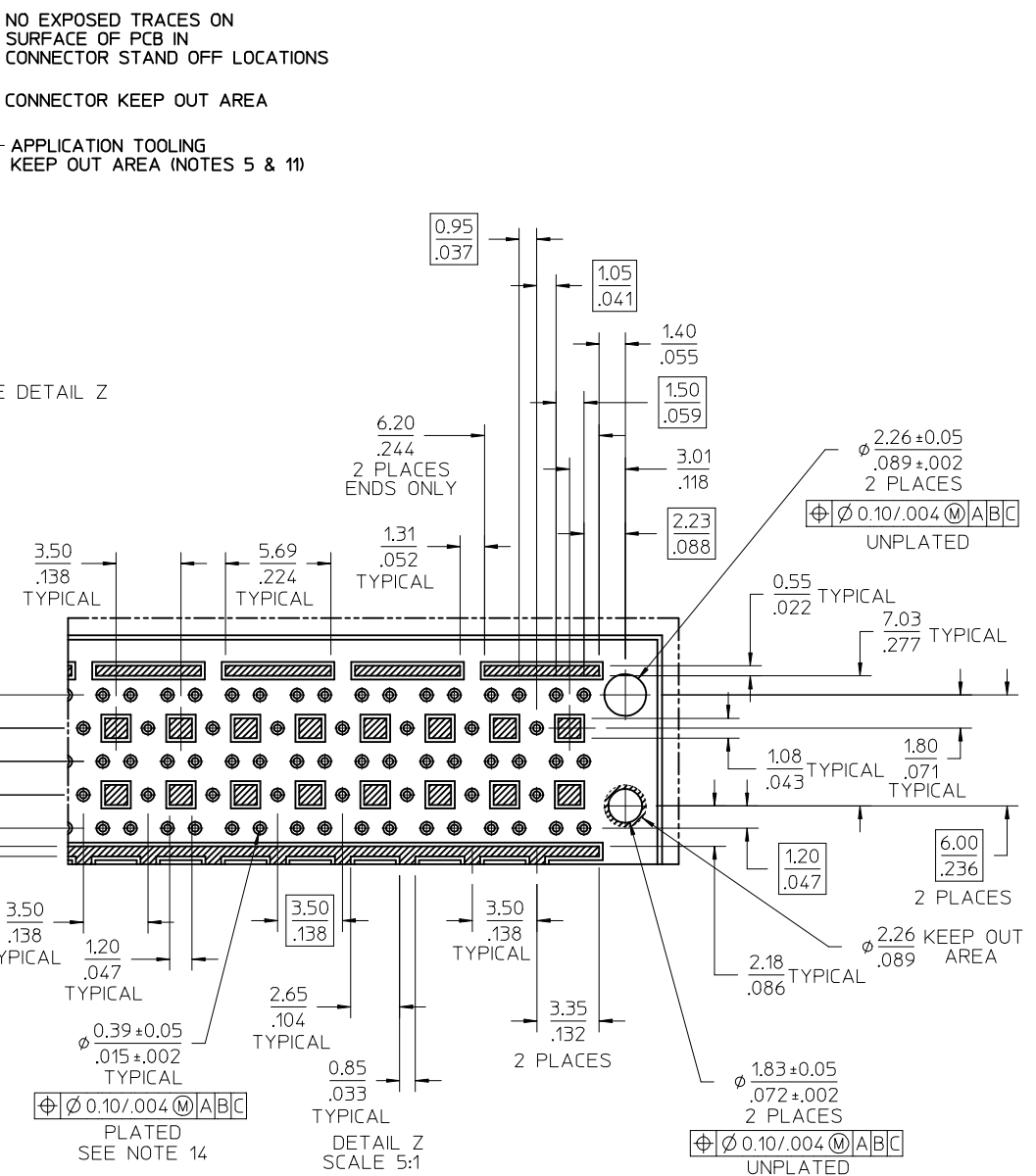
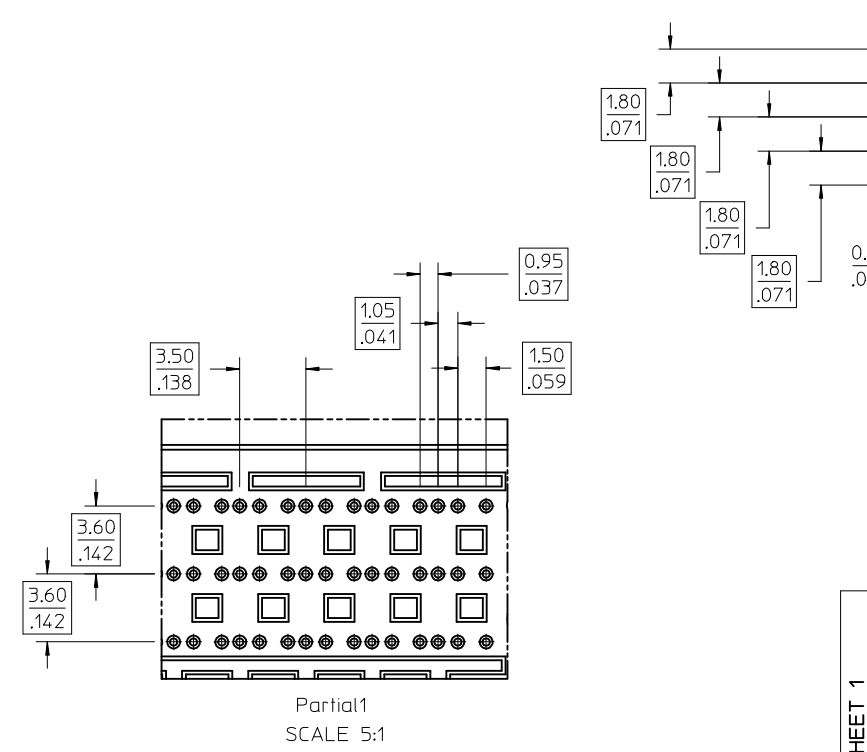
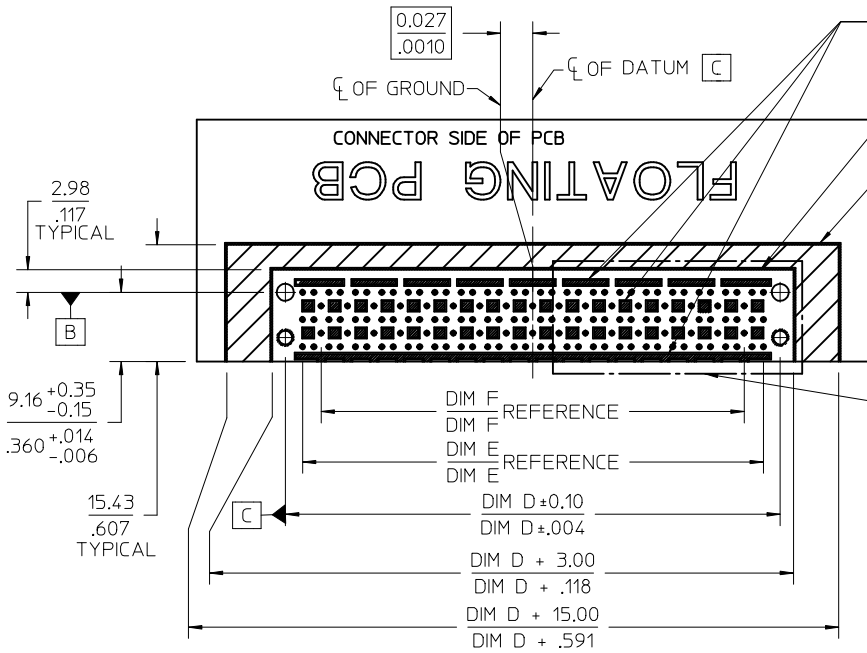
OPTION 1

- CONTACT INTERFACE
- 0.76 MICROMETER MINIMUM SELECT GOLD
- 1.27 MICROMETER MINIMUM NICKEL OVERALL
- COMPLIANT INTERFACE
- 0.76 MICROMETER MINIMUM SELECT TIN OVER
- 1.27 MICROMETER MINIMUM NICKEL OVERALL
- HOUSING
- 3.81 MICROMETER MINIMUM HIGH PHOS NICKEL OVER
- 3.81 MICROMETER MINIMUM COPPER OVERALL

OPTION 2

- CONTACT INTERFACE
- 0.76 MICROMETER MINIMUM SELECT GOLD
- 1.27 MICROMETER MINIMUM NICKEL OVERALL
- COMPLIANT INTERFACE
- 0.76 MICROMETER MINIMUM SELECT TIN OVER
- 1.27 MICROMETER MINIMUM NICKEL OVERALL
- HOUSING
- 0.10 MICROMETER MAXIMUM IMMERSION GOLD
- 3.81 MICROMETER MINIMUM HIGH PHOS NICKEL OVER
- 3.81 MICROMETER MINIMUM COPPER OVERALL

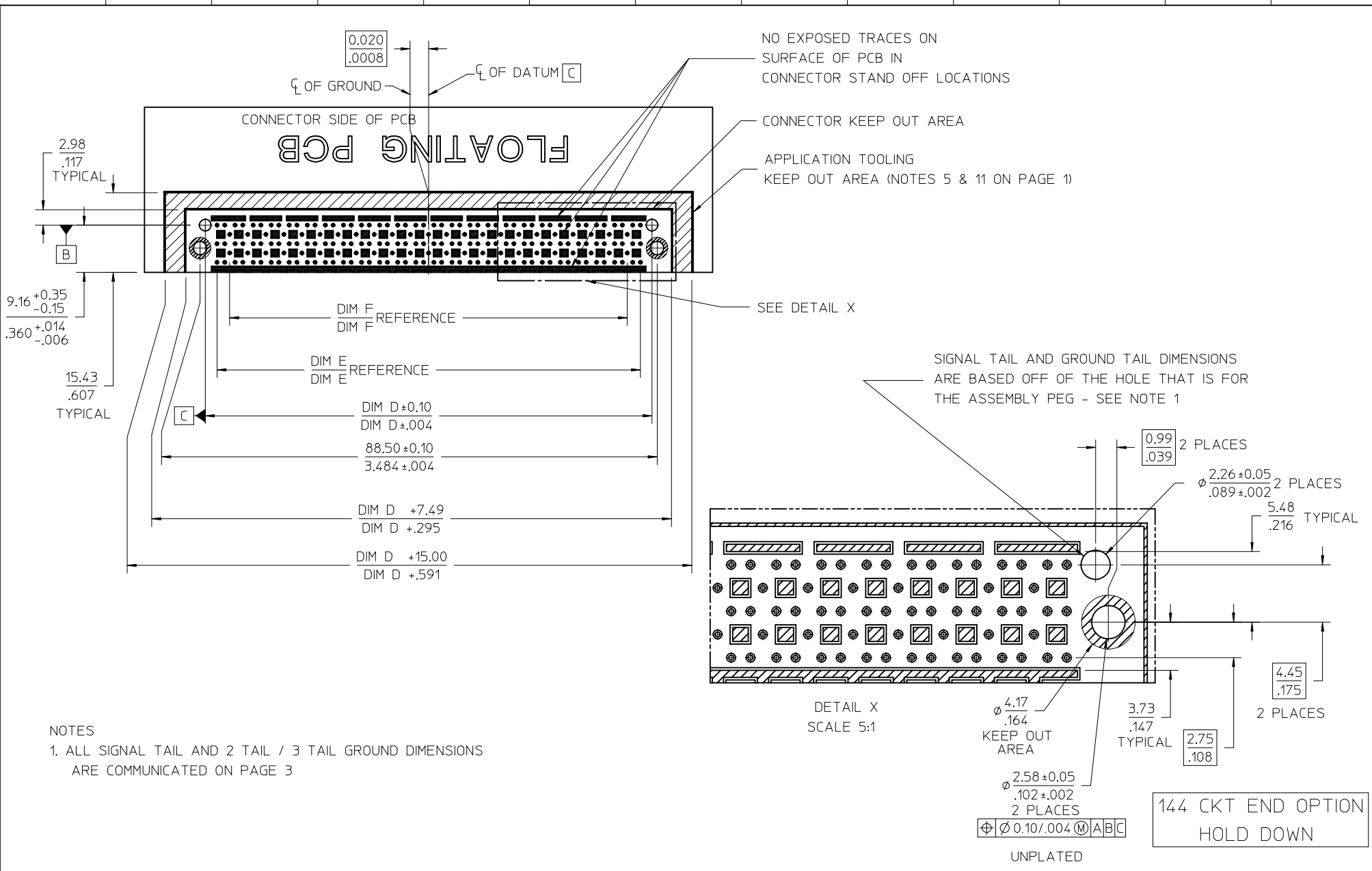
SEE SHEET 1 EC NO: UCP2015-2894 DRWN:MPOFF 2013/08/29 CHKD:BBARKER 2015/01/19 APPR:SMILLER 2015/01/29	QUALITY SYMBOLS ▽=0 ▽=0 ▽=0	GENERAL TOLERANCES (UNLESS SPECIFIED)		DIMENSION STYLE		SCALE	DESIGN UNITS	THIRD ANGLE PROJECTION
		mm	INCH	MM/IN		2:1	METRIC	
		4 PLACES ± ---	± ---	DRAWN BY	DATE	TITLE HS DOCK+ FLOATING CONNECTOR		
		3 PLACES ± ---	± .005	MPOFF	2012/09/19			
2 PLACES ± 0.13	± .01	CHECKED BY	DATE					
1 PLACE ± 0.25	± ---	TIBARRA	2012/09/19	MATERIAL NO. SEE TABLE		DOCUMENT NO. SD-74149-0001		
0 PLACE ±	±	APPROVED BY	DATE					SHEET NO. 2 OF 5
DRAFT WHERE APPLICABLE MUST REMAIN WITHIN DIMENSIONS		ANGULAR ±1/2°		SIZE C		THIS DRAWING CONTAINS INFORMATION THAT IS PROPRIETARY TO MOLEX INCORPORATED AND SHOULD NOT BE USED WITHOUT WRITTEN PERMISSION		



3 TAIL GROUND OPTION

2 TAIL GROUND OPTION - 108 CKT END OPTION

SEE SHEET 1 EC NO: UCP2015-2894 DRWN:MPOFF 2013/08/29 CHKD:BBARKER 2015/01/19 APPR:SMILLER 2015/01/29	QUALITY SYMBOLS ▽=0 ▽=0 ▽=0	GENERAL TOLERANCES (UNLESS SPECIFIED)		DIMENSION STYLE		SCALE	DESIGN UNITS	THIRD ANGLE PROJECTION		
				MM/IN		2:1	METRIC			
						DRAWN BY	DATE	TITLE		
						CHECKED BY	DATE	HS DOCK+ FLOATING CONNECTOR		
				APPROVED BY		DATE	molex DOCUMENT NO. SD-74149-0001 SHEET NO. 3 OF 5			
				SMILLER		2012/10/01				
		ANGULAR ±1/2°		MATERIAL NO.						
		DRAFT WHERE APPLICABLE MUST REMAIN WITHIN DIMENSIONS		SEE TABLE						
				THIS DRAWING CONTAINS INFORMATION THAT IS PROPRIETARY TO MOLEX INCORPORATED AND SHOULD NOT BE USED WITHOUT WRITTEN PERMISSION						

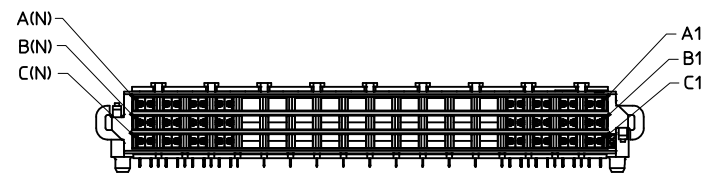
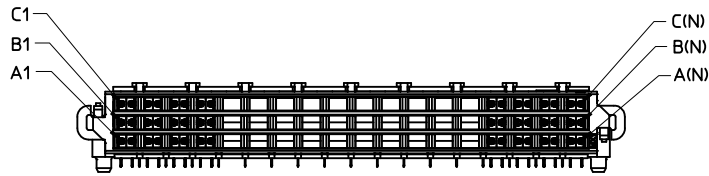
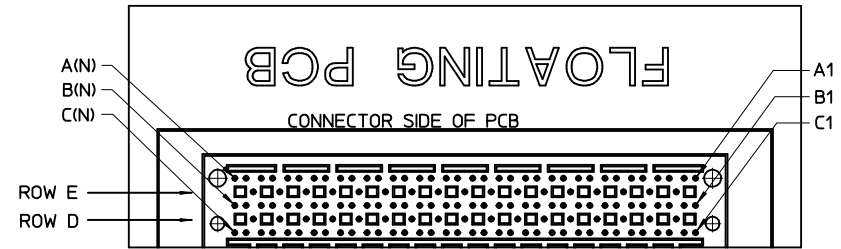
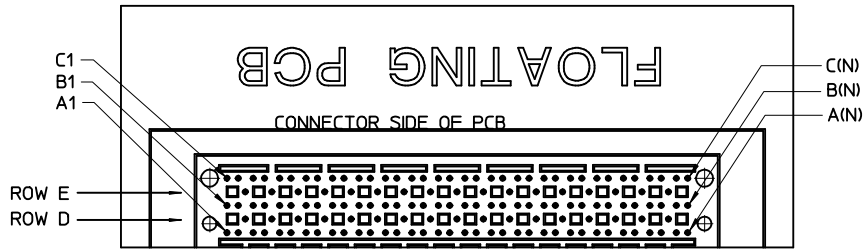
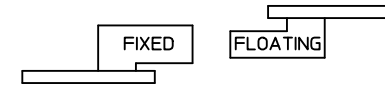
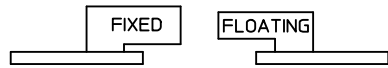


NOTES
 1. ALL SIGNAL TAIL AND 2 TAIL / 3 TAIL GROUND DIMENSIONS ARE COMMUNICATED ON PAGE 3

SEE SHEET 1 EC NO: UCP2015-2894 DRWN:MPOFF 2013/08/29 CHKD:BBARKER 2015/01/19 APPR:SMILLER 2015/01/29	QUALITY SYMBOLS ▽=0 ▽=0 ▽=0	GENERAL TOLERANCES (UNLESS SPECIFIED)		DIMENSION STYLE MM/IN		SCALE 2:1	DESIGN UNITS METRIC	THIRD ANGLE PROJECTION	
		4 PLACES ± --- ± ---	3 PLACES ± --- ± .005	DRAWN BY MPOFF	DATE 2012/09/19	TITLE HS DOCK+ FLOATING CONNECTOR			
		2 PLACES ± 0.13 ± .01	1 PLACE ± 0.25 ± ---	CHECKED BY TIBARRA	DATE 2012/09/19	APPROVED BY SMILLER		DATE 2012/10/01	
		0 PLACE ± ±	ANGULAR ±1/2°		MATERIAL NO. SEE TABLE		DOCUMENT NO. SD-74149-0001	SHEET NO. 4 OF 5	
DRAFT WHERE APPLICABLE MUST REMAIN WITHIN DIMENSIONS		THIS DRAWING CONTAINS INFORMATION THAT IS PROPRIETARY TO MOLEX INCORPORATED AND SHOULD NOT BE USED WITHOUT WRITTEN PERMISSION							

STANDARD APPLICATION CIRCUIT DESIGNATIONS

INVERTED APPLICATION CIRCUIT DESIGNATIONS



CIRCUIT DESIGNATION

FIRST MATE: HOUSING - SIGNAL GROUND
 SECOND MATE: A1, C1, A(N), C(N) (FOR POWER RETURN)
 THIRD MATE: A2, B2, C2, A(N-1), B(N-1), C(N-1) & ALL OTHERS
 (A2, C2, A(N-1) & C(N-1) FOR POWER)
 (ALL OTHERS FOR SIGNAL)
 LAST MATE: B1, B(N) (FOR CARD DETECT)

ALL COLUMNS FROM 3 THROUGH (N-2) ARE SUITABLE FOR DIFFERENTIAL PAIRS
 EG: A3-A4, B3-B4, C3-C4, A(N-2)-A(N-3), B(N-2)-B(N-3)

SIGNAL GROUND: ROWS D & E

SEE SHEET 1 EC NO: UCP2015-2894 DRWN:MPOFF 2013/08/29 CHKD:BBARKER 2015/01/19 APPR:SMILLER 2015/01/29	QUALITY SYMBOLS ▽=0 ▽=0 ▽=0	GENERAL TOLERANCES (UNLESS SPECIFIED)		DIMENSION STYLE MM/IN		SCALE 2:1	DESIGN UNITS METRIC	THIRD ANGLE PROJECTION		
		4 PLACES ± --- ± ---	mm	INCH	DRAWN BY MPOFF	DATE 2012/09/19	TITLE HS DOCK+ FLOATING CONNECTOR molex DOCUMENT NO. SD-74149-0001 SHEET NO. 5 OF 5			
		3 PLACES ± --- ± .005			CHECKED BY TIBARRA	DATE 2012/09/19				
		2 PLACES ± 0.13 ± .01			APPROVED BY SMILLER	DATE 2012/10/01				
1 PLACE ± 0.25 ± ---			MATERIAL NO.							
0 PLACE ± ±			ANGULAR ±1/2°							
DRAFT WHERE APPLICABLE MUST REMAIN WITHIN DIMENSIONS		SIZE C		SEE TABLE						