

1

2

3

4

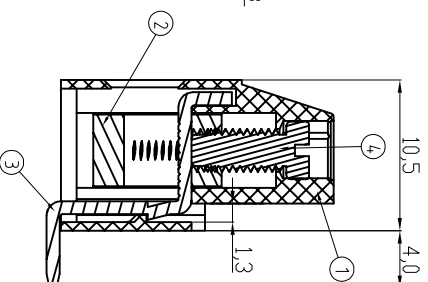
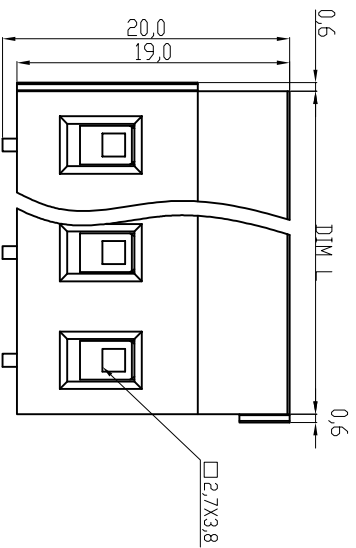
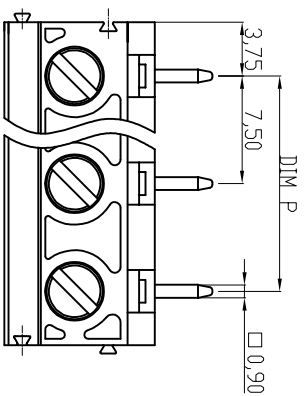
5


6

7

Material

- ① Terminal housing: Thermoplastic (UL94V-0), GREEN
 ② Clamp: Brass, Ni plated
 ③ Wire guard solder pin: Copper, Tin plated
 ④ Terminal screw: Steel Zinc plating " " slot type



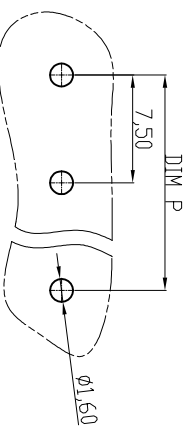
Electrical cULus
 Voltage rating: 300VAC
 Current rating: 20A
 Wire range:
 Solid wire(AWG): 12-30
 Stranded wire(AWG): 12-30
 Torque(Lb-In): 3.5
 Screw: M3
 Wire strip length: 6-7mm
 Withstanding Voltage: 1.6KV
 Operating temperature: -40°C to +115°C
 Soldering temperature: 250°C±10°C/5 Sec
 Safety Approval: 

DIMENSION

L	Nx7.5
P	(N-1)x7.5

N=Number of poles

Poles	Tolerance
2p-6p	±0.15
7p-12p	±0.25
13p-16p	±0.35



RECOMMENDER PCB LAYOUT

RoHS compliant



File No.: E349947

Scale	1:1
TOLERANCE	
X.	±0.50
X.X	±0.30
X.XX	±0.10
DIM	TOL
X.°	±1°
Angle	TOL

①	Add the UL File No.	19.04.2016	Winnie
②	Drawn	19.04.2010	Alex
Id.	Modification	Date	Name

Date	Name	
19.04.2010	Alex	
19.04.2016	Winnie	
Approved	19.04.2016	Winnie

ASSMANN
 WSW/ components

Customer-No.	ASSMANN WSW-No. A-TB750-VJXXV
Drawing-No.	ASS 4112 CO
Replace	rev01
Sheet	

G

G

H

H

1

2

3

4

5

6

7

E

E

D

D

C

C

B

B

A

A