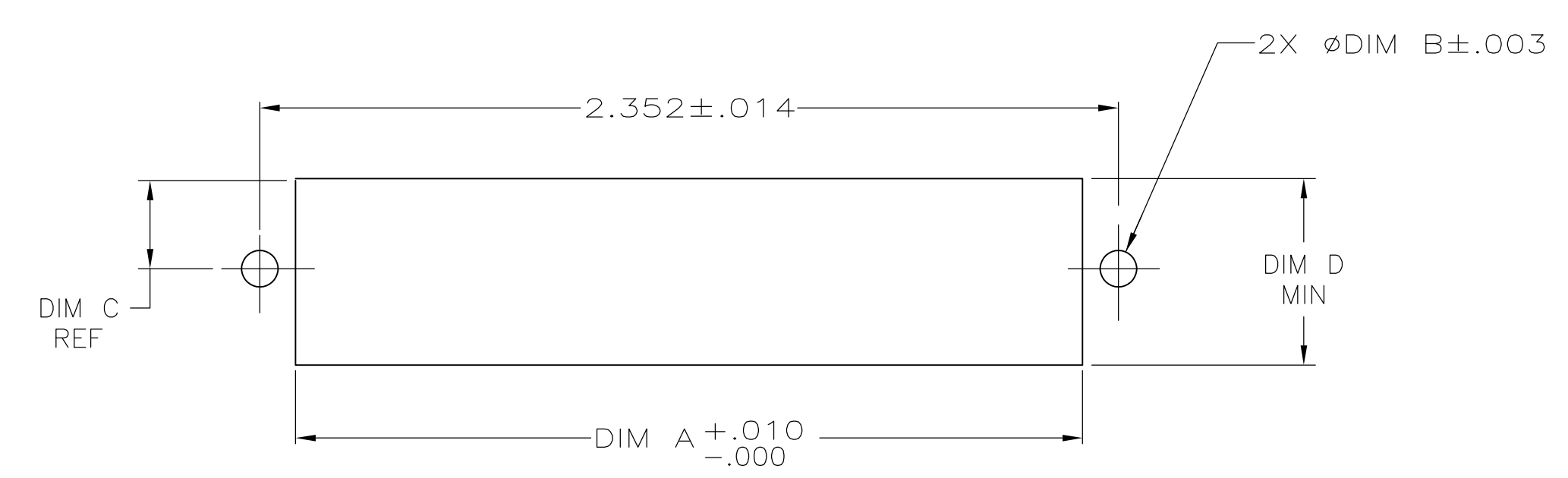
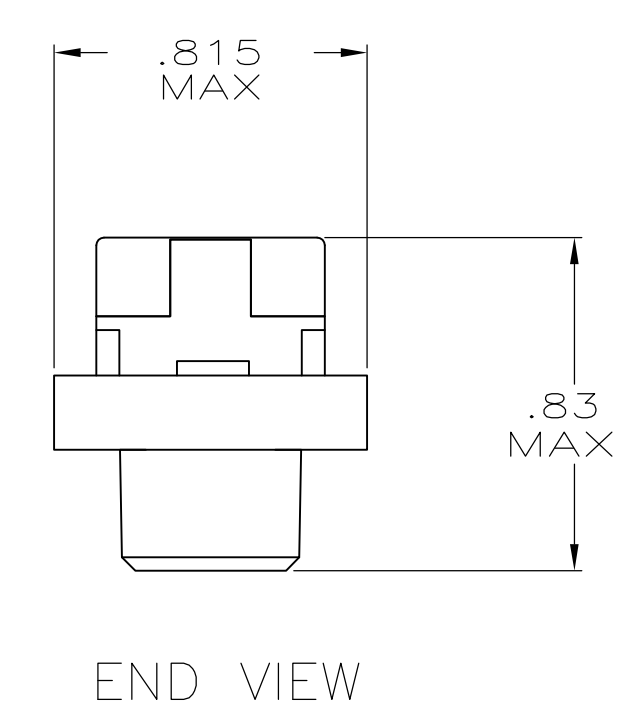
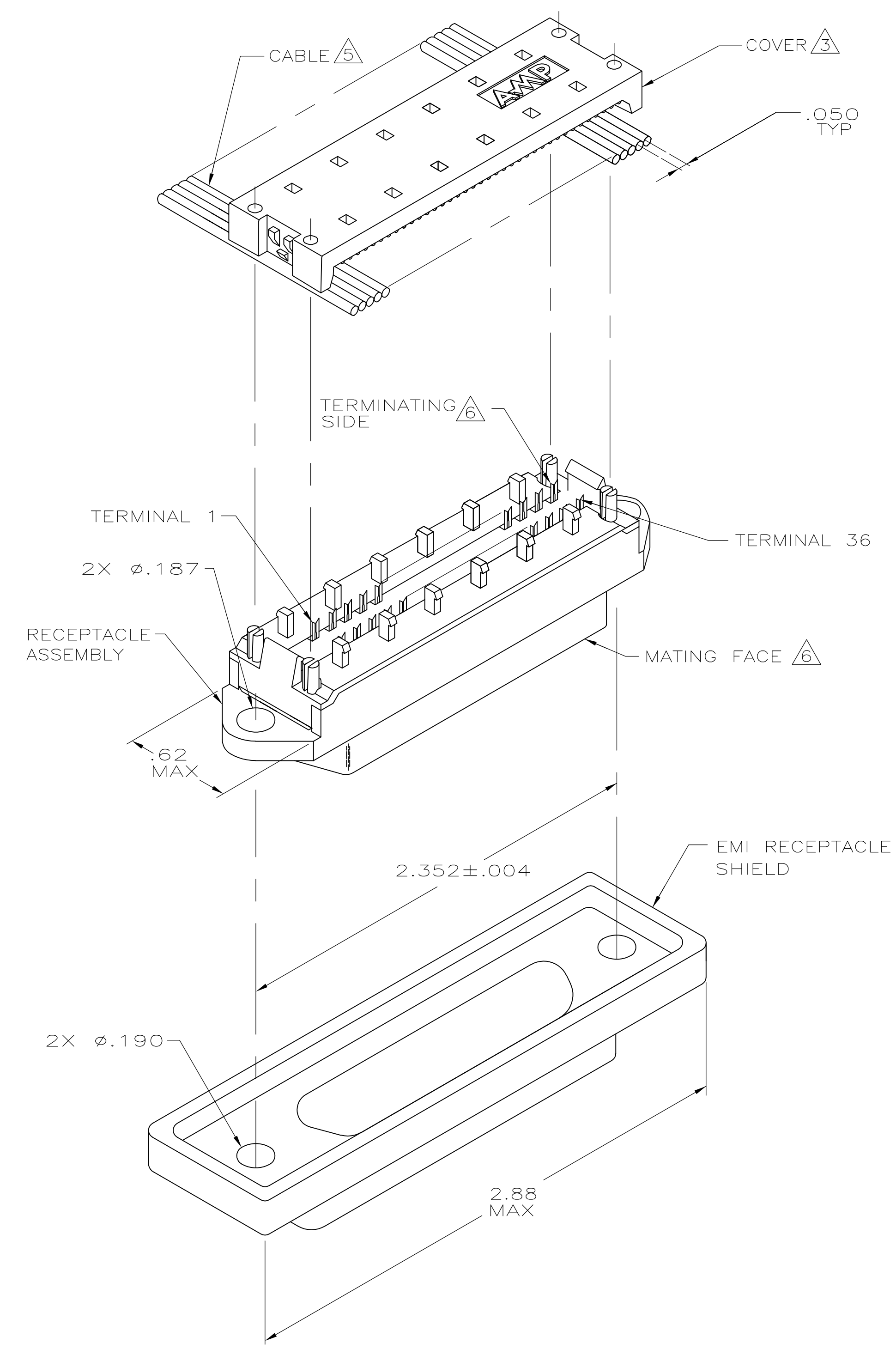


LOC		DIST		REVISIONS			
GP	00	REV	DATE	BY	CHK	APPV	
C		1	17APR08	BM	WM		
DESCRIPTION				REVISED PER ECO-08-007327			



1. THE CONTACT SURFACES OF THE TERMINALS ARE COATED WITH LUBRICANT.
2. MATERIAL:
HOUSING AND COVER - POLYPHENYLENE OXIDE (BLACK).
TERMINALS - PHOS BRONZE PLATED WITH EITHER .000030 MINIMUM GOLD PLATE OR GOLD FLASH OVER PALLADIUM NICKEL PLATE, .000030 MIN TOTAL ON MATING SURFACE. GOLD FLASH PLATED ON TERMINATING SIDE. .000050 MINIMUM NICKEL UNDERPLATE OVER ENTIRE TERMINAL.
EMI SHIELD: NICKEL PLATED DIE CASTING.
3. COVER SHOWN LOOSE BUT SHIPPED ASSEMBLED.
4. WIRE RANGE: 26 AWG SOLID THRU 30 AWG SOLID AND 28 AWG STRANDED RIBBON CABLE.
5. FLAT CABLE SHALL BE FURNISHED BY CUSTOMER.
6. MATING FACE CONSISTS OF TWO ROWS OF TERMINALS ON .085 CENTERS. TERMINATING SIDE CONSISTS OF TERMINALS ON .100 CENTERS FOR AN EFFECTIVE .050 TERMINATION.
7. PANEL THICKNESS RANGE:
OUTSIDE MOUNTING - .125 MAX.
INSIDE MOUNTING - .062 MAXIMUM.
8. EMI SHIELD SHIPPED LOOSE.
9. FOR MORE INFORMATION REFER TO AMP PRODUCT SPECIFICATION 108-6076 & APPLICATION SPEC 114-6030.

.620	.310	.149	2.085	REAR PANEL MOUNTING	5554348-1
.640	.320	.126	2.000	FRONT PANEL MOUNTING	
DIM D	DIM C	DIM B	DIM A	DESCRIPTION	PART NUMBER

THIS DRAWING IS A CONTROLLED DOCUMENT.		DIN 15	16JAN06	Tyco Electronics Corporation Harrisburg, PA 17105-3608	
DIMENSIONS: INCHES		CHK W	16JAN06	NAME	
TOLERANCES UNLESS OTHERWISE SPECIFIED:		W	16JAN06	EMI RECEPTACLE ASSEMBLY, 36 POSITION, LOW PROFILE, SHIELDED, CHAMP LATCH	
0. PLC ± -	1. PLC ± -	W	16JAN06	PRODUCT SPEC	108-6076
2. PLC ± -	3. PLC ± .005	W	16JAN06	APPLICATION SPEC	114-6030
4. PLC ± -	ANGLES ± -	W	16JAN06	SIZE	A1
MATERIAL	FINISH	W	16JAN06	SCALE	2:1
2	2	W	16JAN06	SHEET	1 OF 1
CUSTOMER DRAWING		W	16JAN06	REV	C