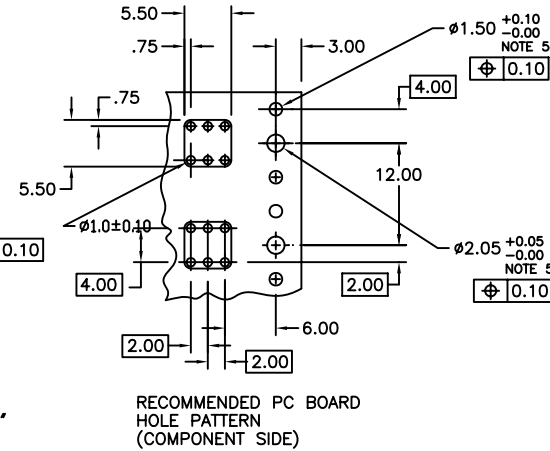
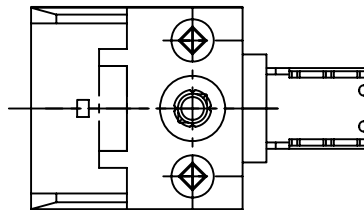
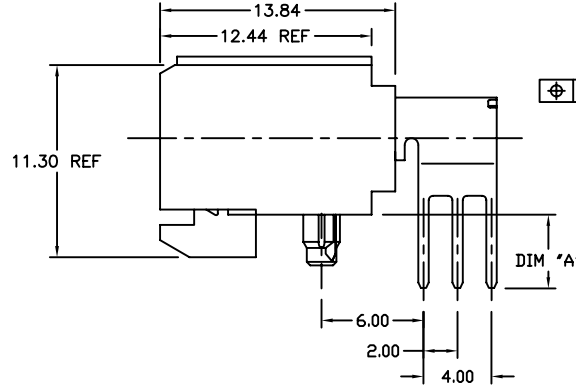
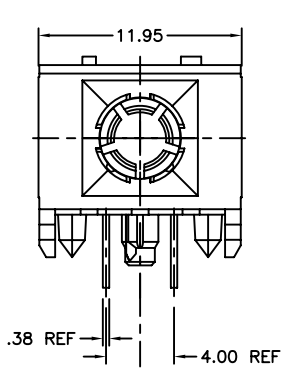


PRODUCT NO.	PCB THICKNESS	DIM A
70426-002	2.4	3.5
70426-003	1.6	2.7
70426-002LF	2.4	3.5
70426-003LF	1.6	2.7



NOTES:

- BODY MATERIAL: LCP, 30% GLASS-FILLED, FLAME RETARDANT, ACC, UL94-V0
- TERMINAL MATERIAL: BeCu
- PLATING SOLDER TAILS: FOR 70246-OXX SnPb
FOR 70246-OXXLF Sn (LEAD FREE)
- PLATING CONTACT AREA: 0.80 μ m Au OVER 1.3 μ m Ni.
- INDICATED HOLES ARE UNPLATED
- PRODUCT MARKETING: PART NUMBER & BATCH I.D.
- THE PRODUCTS WHERE THE PART NUMBER ENDS IN "LF" MEET THE EUROPEAN DIRECTIVES AND OTHER COUNTRY REGULATIONS AS DESCRIBED IN GS-22-008.
- ALL PRODUCTS WILL WITHSTAND EXPOSURE TO 260° FOR 60 SECONDS IN A CONVECTION, INFRA-RED OR VAPOR PHASE REFLOW OVEN.

mat'l. code		surface		tolerance		projection		product family	
		ASME Y14.5		ASME Y14.5		MM		METRAL (tm)	
ltr	ecn no	dr	date	tolerances unless otherwise specified		MM		title	
A	V60323	SAR	1996-09-03	angles	XXx3	MM		POWER CONNECTORS ASS'Y	
B	V61725	SAR	1996-11-18	flat	XXx.B	scale 1:1		W/ METRAL HSG 89092	
C	V81212	MDF	1998-06-17	0° ±2'	XXXx.051			dwg no	
D	V01598	JWS	2000-07-12	dr	S. ROYER	1996-09-06		sheet 1 of 1	
E	VO4-1128	DAI	2005-02-08	engr	C. PENDLETON	1996-09-06		size	
F	VO6-0808	JRV	2006-06-21	chr	C. PENDLETON	1996-09-06		70426	
sheet index		revision sheet		F		appd		type	
		1						CUSTOMER Drawing	