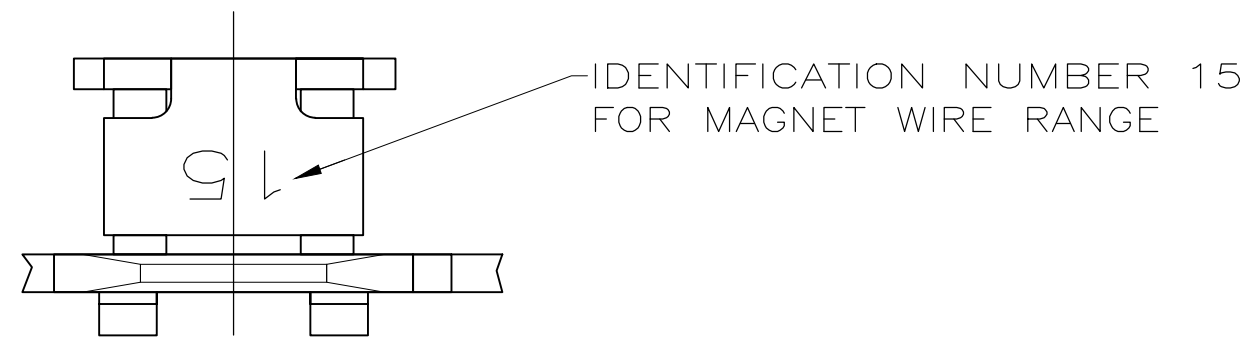
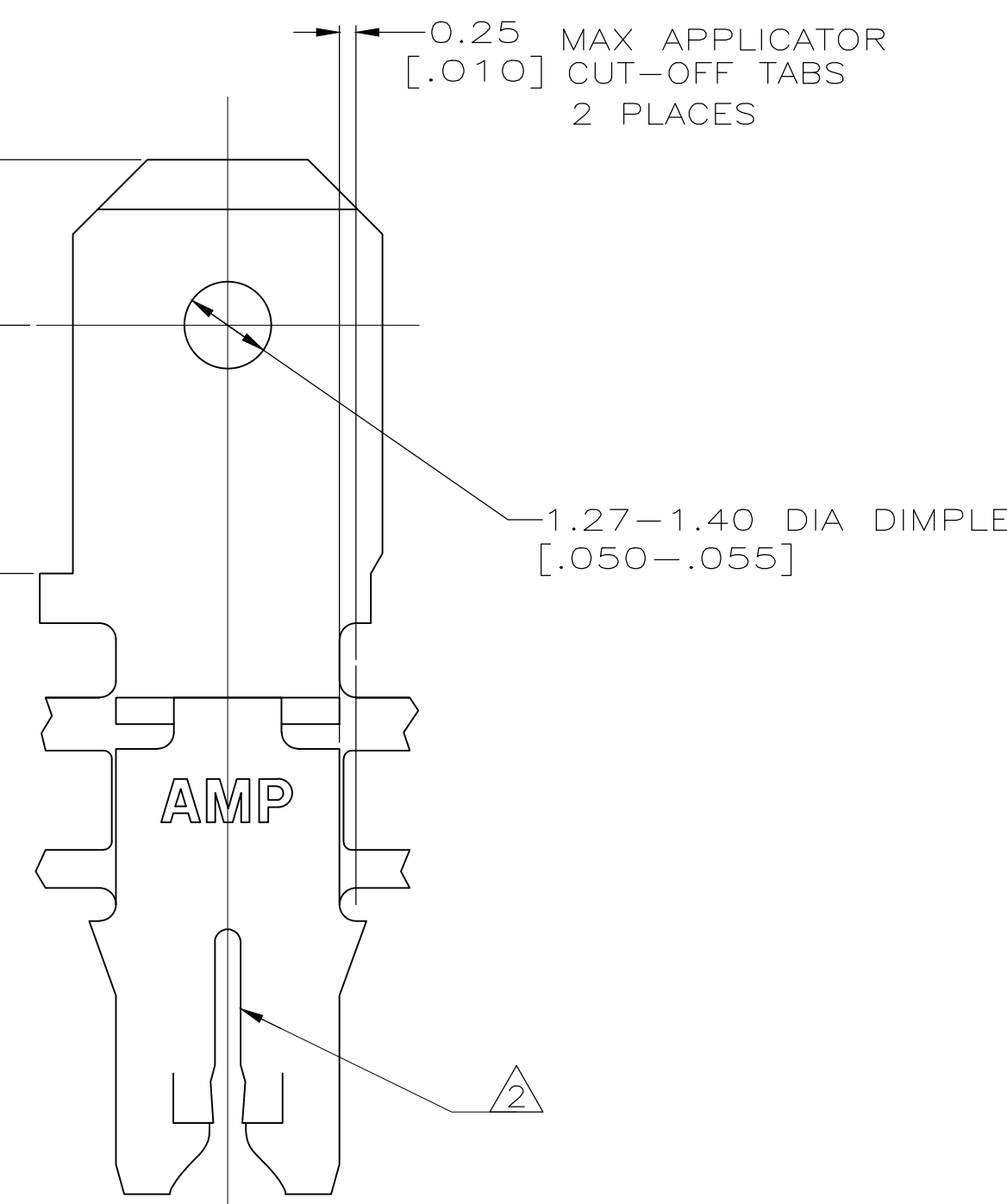
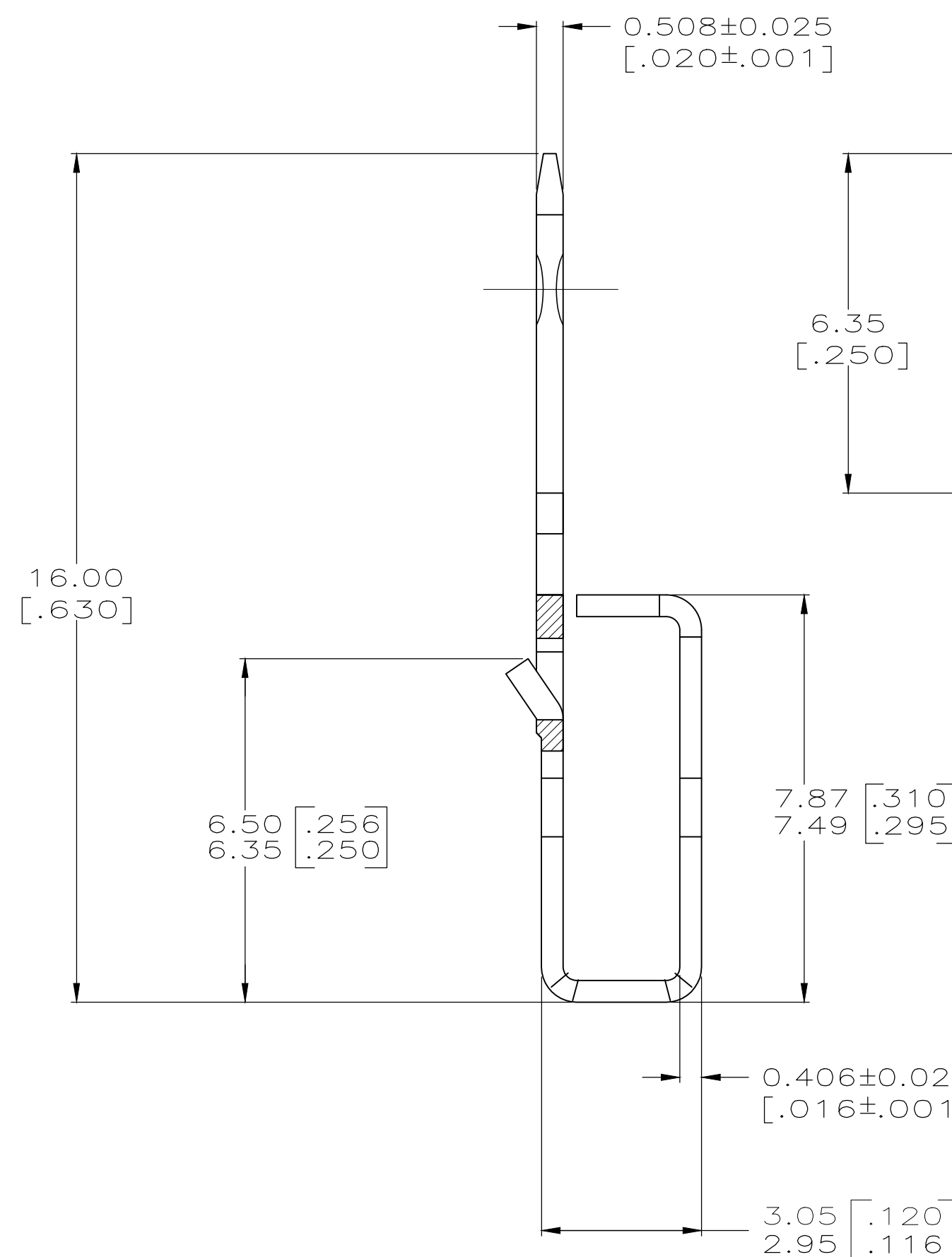
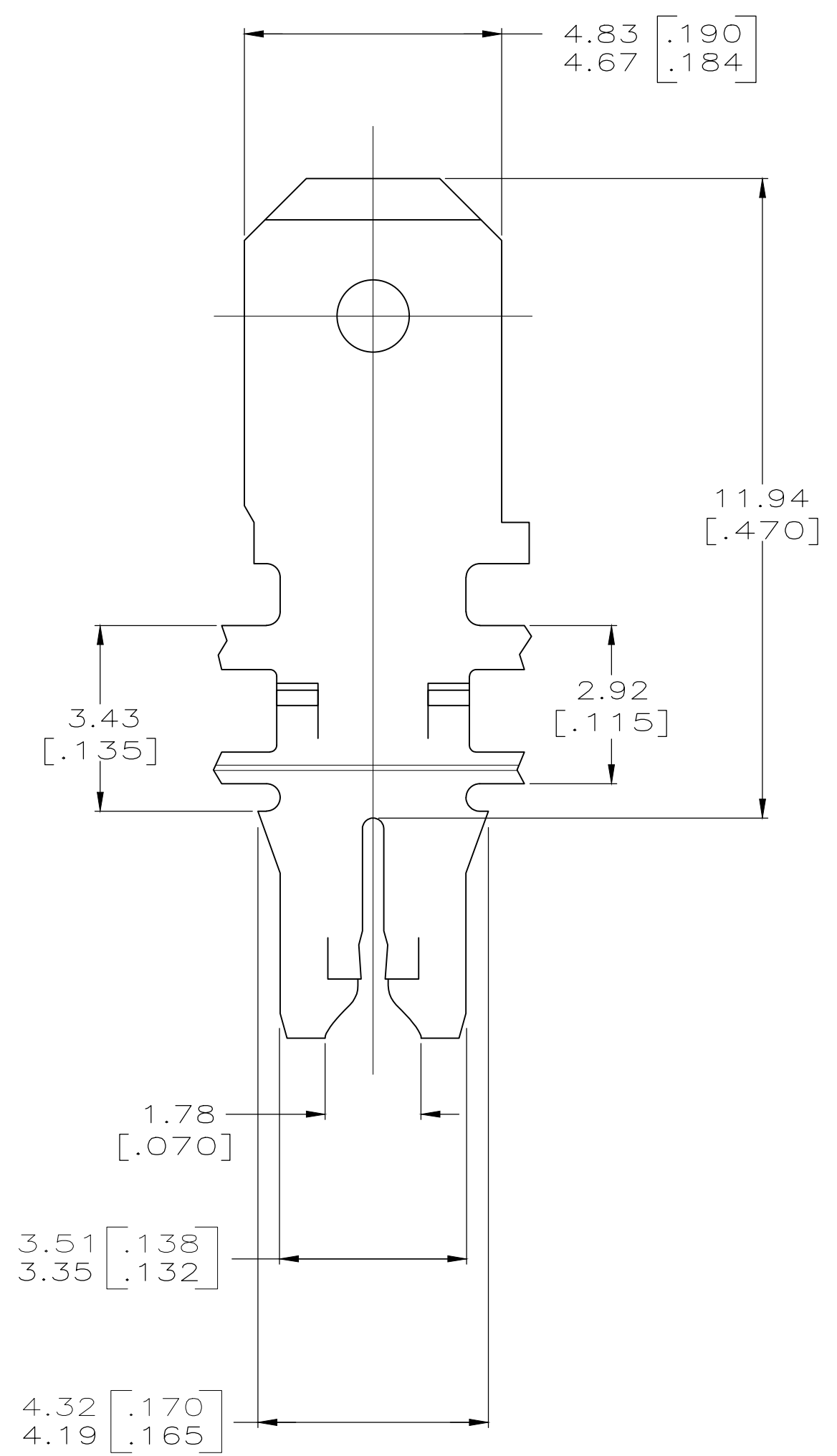


THIS DRAWING IS UNPUBLISHED. RELEASED FOR PUBLICATION  
 © COPYRIGHT - By - ALL RIGHTS RESERVED.

LOC		DIST		REVISIONS			
P	LTR	DESCRIPTION		DATE	DWN	APVD	
AF	50	B3	REVISED PER ECR-19-013909	30SEP2019	PC	MB	



1 CONTINUOUS STRIP ON REELS WITH TERMINALS LOCATED ON 5.59±0.08 [.220±.003] CENTERS. SLOT TERMINATES A SINGLE MAGNET WIRE ONLY. COPPER RANGE: 0.57-0.81mm [#23-#20] AWG. ALUMINUM RANGE: 0.72-0.91mm [#21-#19] AWG, ALUMINIUM WIRE RANGE APPLIES FOR POST TIN PLATED PART NUMBERS ONLY.



63340-1  
PART NUMBER

THIS DRAWING IS A CONTROLLED DOCUMENT.		DWN MICHAEL S. FEHER 26JUL96	<b>STE</b> TE Connectivity		
DIMENSIONS: INCHES		CHK RICHARD GRZYBOWSKI 29JUL96			
TOLERANCES UNLESS OTHERWISE SPECIFIED:		APVD NELSON E. NEFF 29JUL96	NAME TERMINAL, TAB, 4.75 [.187] FASTON, <sup>TM</sup> MAG-MATE <sup>TM</sup>		
0 PLC ± - 1 PLC ± - 2 PLC ± 0.25[.010] 3 PLC ± - 4 PLC ± - ANGLES ± -		PRODUCT SPEC 108-2012	SIZE A2	CAGE CODE 00779	DRAWING NO C-63340
MATERIAL BRASS		FINISH TIN PLATED	WEIGHT -	RESTRICTED TO -	SCALE 10:1
CUSTOMER DRAWING			SHEET 1 OF 1	REV B3	