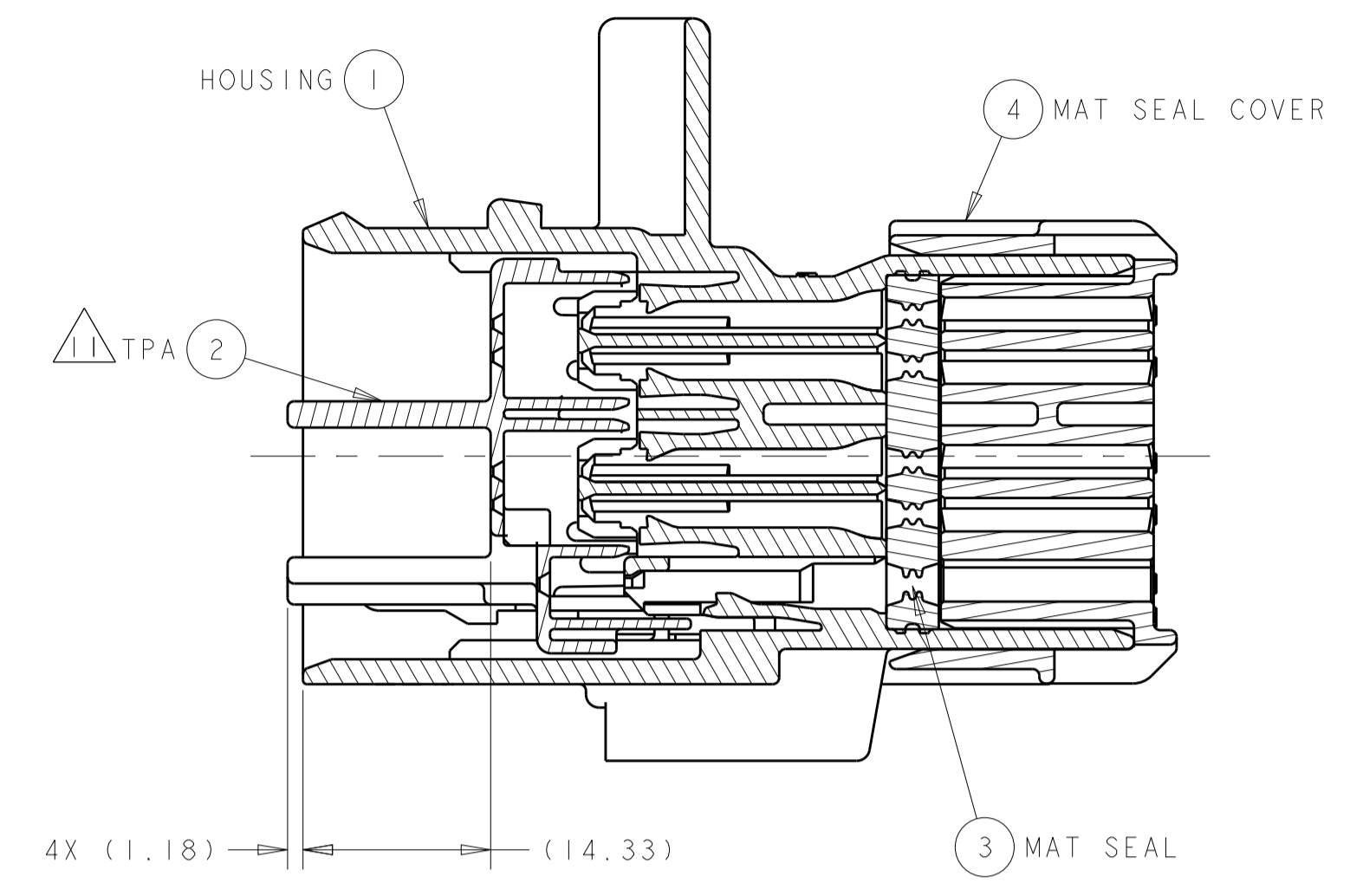
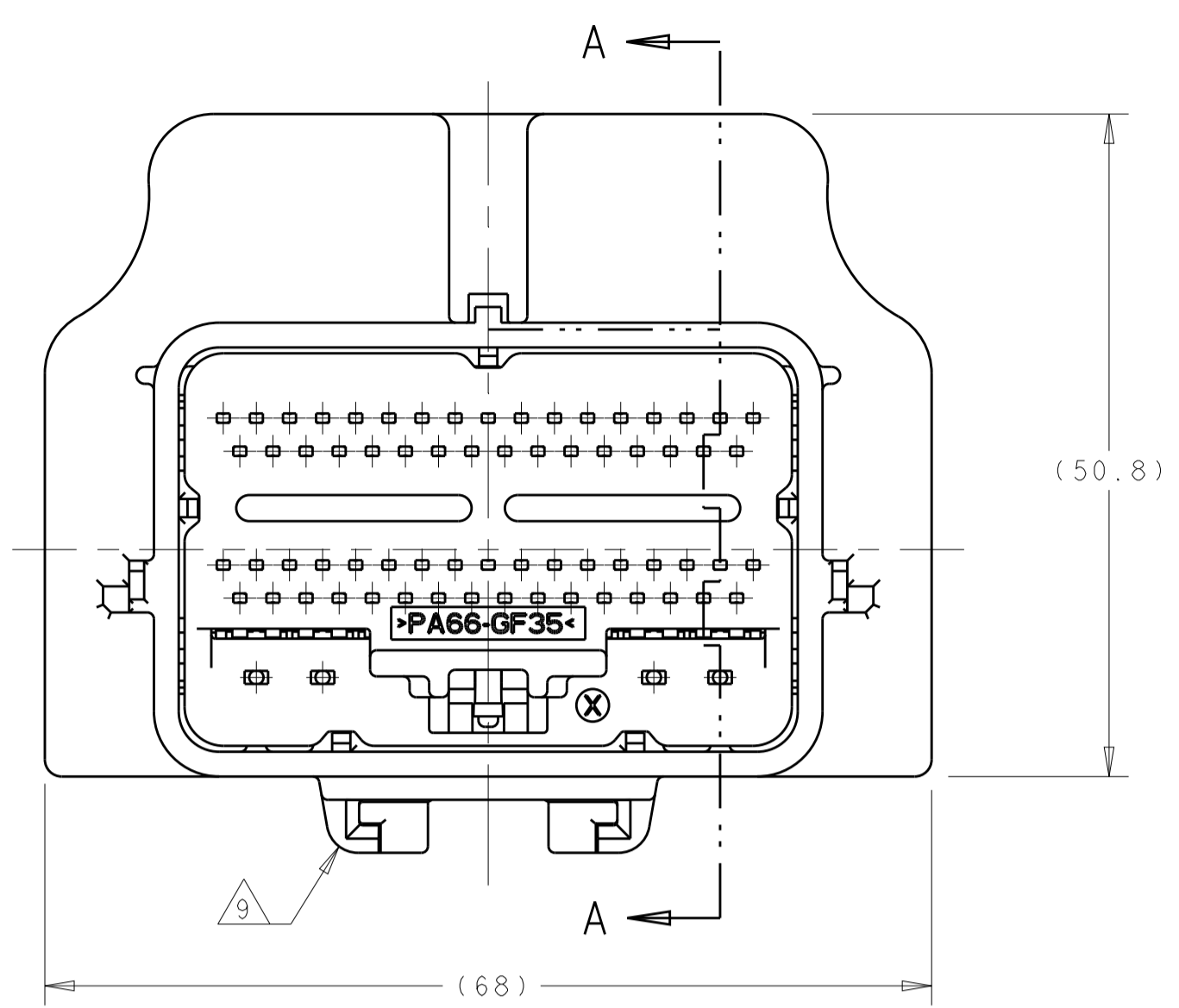
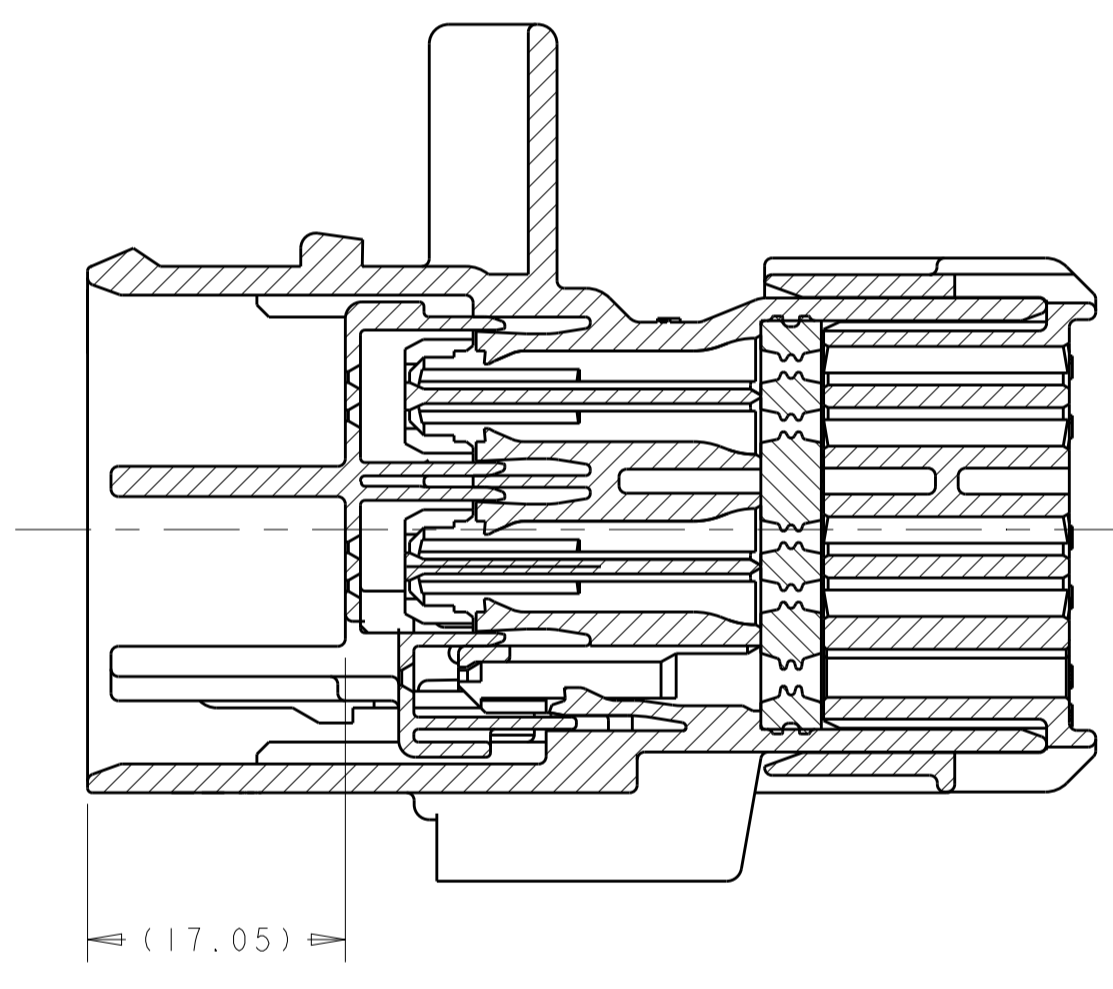
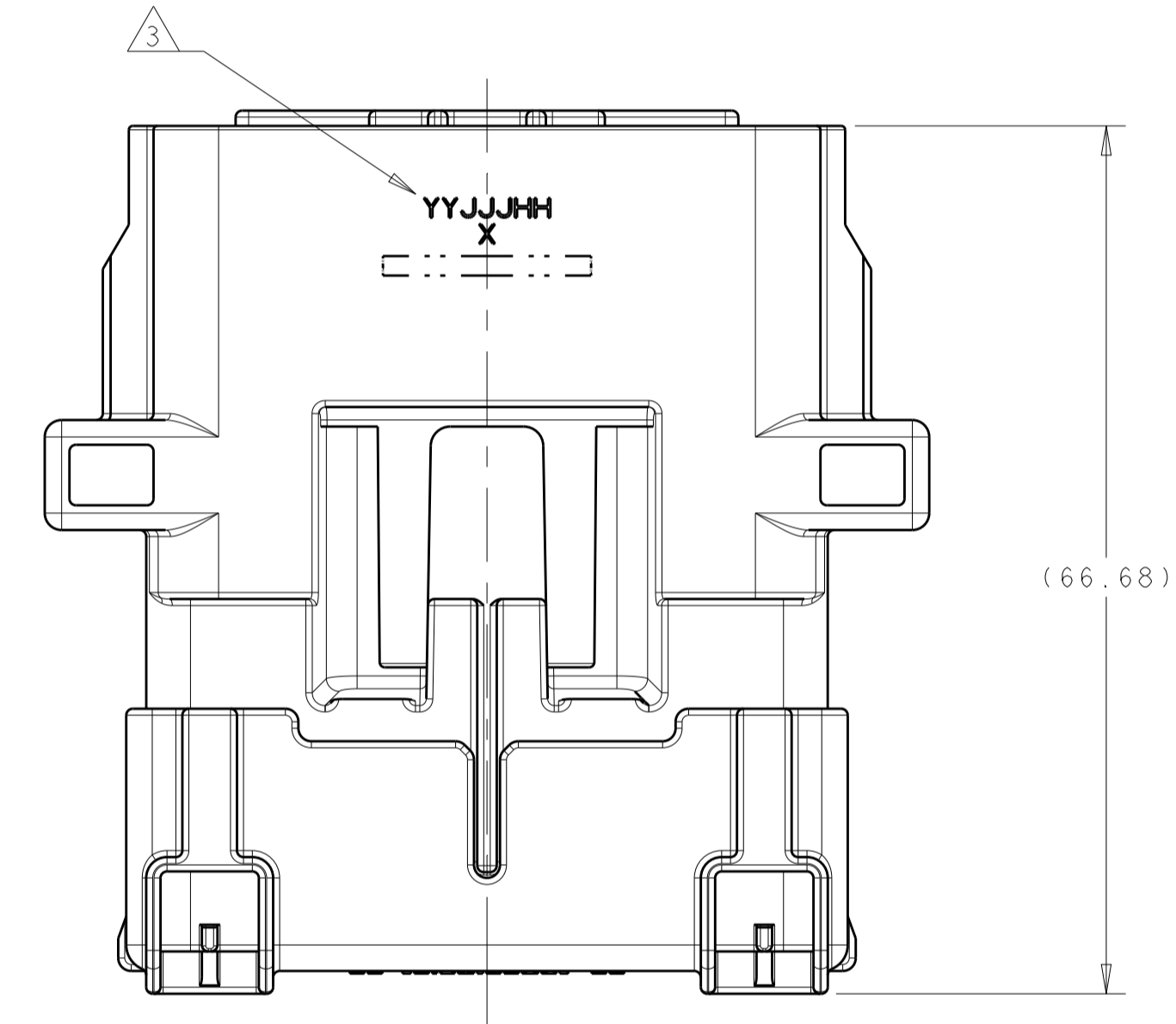


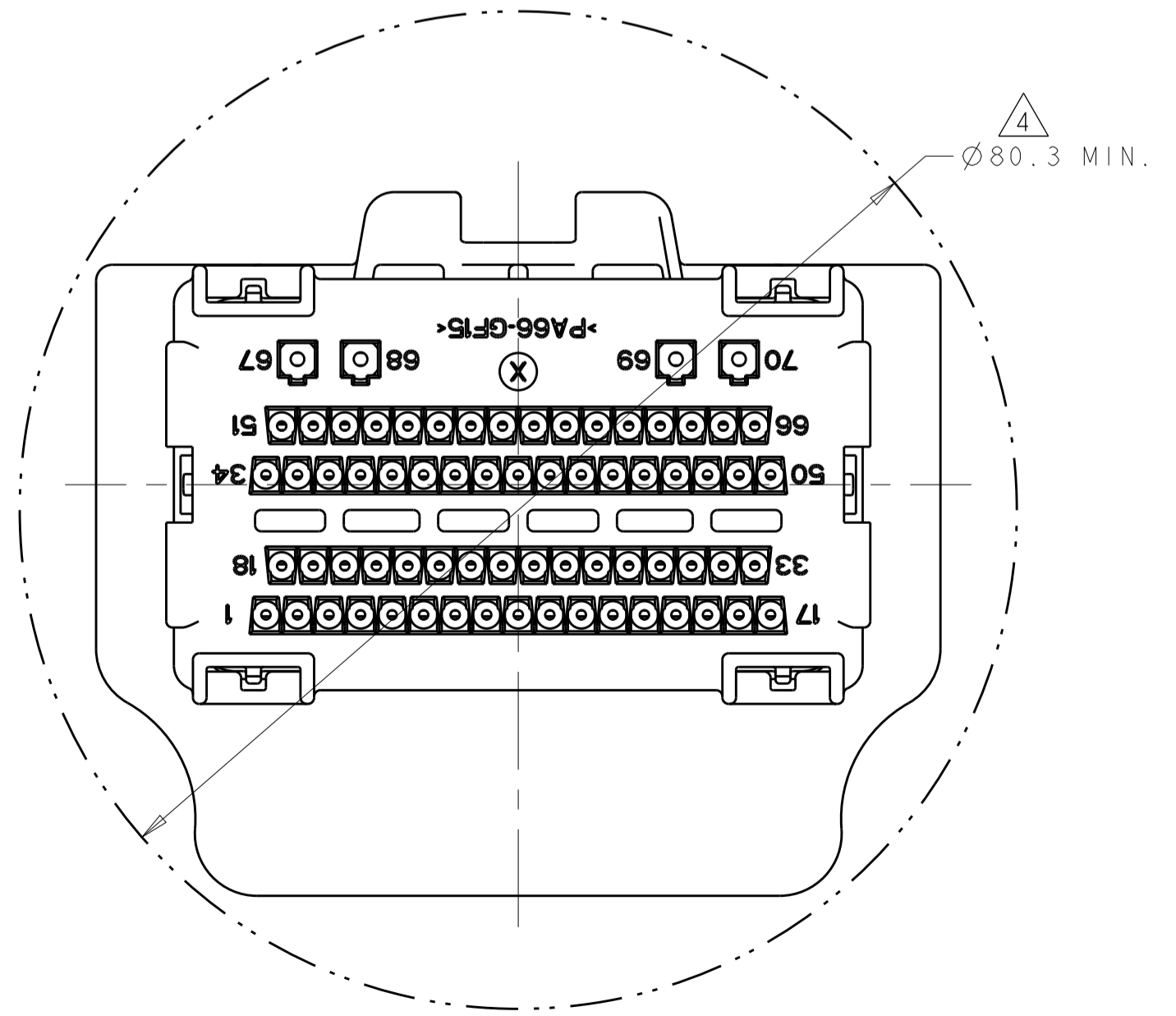
REVISIONS				
P.	LTN	DESCRIPTION	DATE	OWN APVD
D4		REVISED PER ECO-12-002457	07FEB2012	DLD DCM
D5		REVISED PER ECO-14-015175	16OCT2014	DLD DCM
D6		REVISED PER ECO-20-012739	24SEP2020	AP CM



SECTION A-A
 TPA SHOWN IN ITS SHIPPING
 POSITION FROM TYCO ELECTRONICS



SECTION A-A
 TPA SHOWN IN ITS SHIPPING
 POSITION FROM THE HARNESS
 ASSEMBLY PLANT.



- PART NUMBER 1438726-1 SHOWN ON THE DRAWING.
- THE TPA IS SHIPPED IN ITS PRE-LATCHED POSITION.
- TRACEABILITY CODE (YY = TWO DIGIT YEAR, JJJ = THREE DIGIT JULIAN DAY, HH = TWO DIGIT MILITARY HOUR) AND CUSTOMER PART NUMBER PRINTED IN THIS LOCATION AT ASSEMBLY.
- MINIMUM FEED THROUGH CONDITION WITH 1.0mm CLEARANCE ALL AROUND.
- APPLICABLE 0.64 TE CONNECTIVITY (TE) TERMINAL PART NUMBERS (SOLD SEPARATELY).
 FOR TIN APPLICATION: SEE DRAWING 1488220 FOR APPLICABLE PART NUMBERS, WIRE SIZES, AND REELING OPTIONS.
 FOR GOLD APPLICATIONS: SEE DRAWING 1488208 FOR APPLICABLE PART NUMBERS, WIRE SIZES, AND REELING OPTIONS.
- APPLICABLE 1.5 MOLEX TERMINALS PART NUMBERS (SOLD SEPARATELY). 33000-0002 (TIN) WITH WIRE SIZES 16-20AWG OR METRIC EQUIVALENT.
- PART MATES WITH TE PART NUMBER 1438136-X (SOLD SEPARATELY).
- OPTIONAL MATING WIRESHIELD PART NUMBER: 1488374-1 (SOLD SEPARATELY)
- OPTIONAL MATING DELPHI RETENTION CLIP PART NUMBER: 15439357 (SOLD SEPARATELY).
- THIS IS A 3 POSITION TPA.
 STAGE 1: AS SHIPPED TO HARNESS SUPPLIER.
 STAGE 2: AS SHIPPED TO OEM.
 STAGE 3: AS ASSEMBLED IN VEHICLE.
- TPA FORCE REQUIREMENTS FOR THIS PRODUCT ARE AS FOLLOWS:
 MOVE STAGE 1 TO STAGE 2: 68N MAX
 MOVE STAGE 2 TO STAGE 1: 15N MIN, 50N MAX.
 MOVE STAGE 1 TO OFF: 15N MIN
- REFERENCE TE INSTRUCTION SHEET 408-10054.

SEE SHEET 2 FOR
 THE BILL OF MATERIALS

THIS DRAWING IS A CONTROLLED DOCUMENT. DIMENSIONING AND TOLERANCING PER ASME Y14.5M-2009		OWN: M. FORLSKA 04NOV2004 CHK: G. MARTIN 08NOV2004 APVD: G. MARTIN 08NOV2004	TE Connectivity ASSEMBLY, TERMINAL HOUSING, 70 WAY, SEALED INLINE HYBRID
DIMENSIONS: mm	TOLERANCES UNLESS OTHERWISE SPECIFIED: 0 PLC ± 1 PLC ±0.3 2 PLC ±0.10 3 PLC ± 4 PLC ± ANGLES ±1°	PRODUCT SPEC APPLICATION SPEC WEIGHT CUSTOMER DRAWING	
MATERIAL: -		SIZE: A100779 CAGE CODE: - DRAWING NO: 1438726	RESTRICTED TO: - SCALE: 2:1 SHEET 1 OF 2 REV: D6

