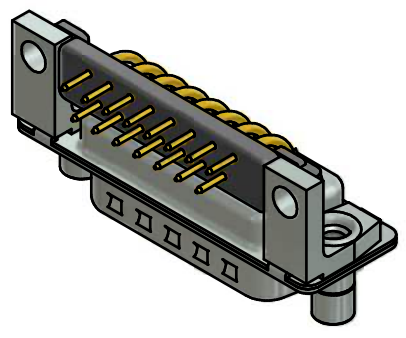


NOTES:

- METAL SHELLS: STEEL; min. 315µm TIN over 40-80µm NICKEL
- INSULATORS: PBT GF UL 94 V-0; BLACK
- CONTACTS: COPPER ALLOY; PLATING (SEE PART-NO.):
 - PLEASE ADD A for GOLD FLASH over NICKEL (PREFERRED TYPE)
 - PLEASE ADD B for 20µm HARD GOLD over min. 50µm NICKEL
 - PLEASE ADD C for 30µm HARD GOLD over min. 50µm NICKEL
- METAL BRACKETS: ZINC DIE CAST; 300µm COPPER/40-120µm NICKEL/120-200µm TIN
- THREADED LOCKS: COPPER ALLOY; min. 200µm TIN over 80µm NICKEL
- FIXING-PLATE: PBT GF UL 94 V-0; BLACK
- MAXIMUM TORQUE VALUE FOR THREAD: 6 in.LB
- CONNECTOR IS PART MARKED: **163□16569X CONEC ABC** (see note 3)



RoHS compliant

THIS DRAWING MAY NOT BE COPIED OR REPRODUCED IN ANY WAY, AND MAY NOT BE PASSED ON TO A THIRD PARTY WITHOUT WRITTEN PERMISSION. OWNERSHIP AND COPYRIGHT OF CONEC GmbH DO NOT ALTER CAD DRAWING BY HAND	tolerance		dim. in mm		scale: 2:1 (5:1)		
					material: SEE NOTES		
			date	name		title:	
			drawn	30.09.15	Unkrüer		D-SUB MALE 90° 15pos. SOLDER PIN ANGLED 0.318inch threaded lock and metal bracket
			appd.	01.10.15	Lehmenkühler		
		norm			dwg no:		
		d-old	16K11MUA/16K1A1185		DIN-A3		
1 x b	Ä 5843	05.10.15	L.U.		16K1A3721 (b)		
a	Original				sh: 1		
rev.	description	date	name		part no: 163□16569X (see note 3)		

