

POTTER & BRUMFIELD SOLID STATE RELAYS

SSRK SSRM Series

TE Connectivity's (TE) Potter & Brumfield solid state relays are featured in Industrial applications, where silent, fast and long electrical life in switching is required. They are used in heating, lighting, industrial automation and industrial machinery applications. SSRK and SSRM series are mounted on DIN Rail for loads up to 65A and 600VAC.



Applications

Heating Control

- Plastic molding machinery
- HVAC & Refrigeration
- Professional food equipment

Industrial Automation

Industrial Machinery

Electrical

- 10A, 20A and 30A Load Current
- 240VAC or 600VAC Load Voltage
- Zero-cross switching
- AC or DC Input Control
- 4000V rms optical isolation
- SCR Output for heavy industrial load

Mechanical

- DIN Rail Mounting
- 22.5 or 45mm wide
- Ships with integrated Heatsink

Specifications

- UL approval: E29244

Materials


- Heatsink: Black Anodized Aluminum
- Heat Dissipation: Aluminum clad
- Engineering Plastics: UL 94-V0

Benefits

- Allows for high heat dissipation with integrated heatsink
- Save cabinet space with slim 22.5mm profile with DIN Rail mounting
- Easy installation with finger-safe (IP20) screw clamp terminals for load and control


Product Selection Information

SSRK Series - Solid State Relay, DIN Rail Mount with Paired SCR Output, Integral Heatsink

	Part Number	Part Code	Description
	9-1393030-1	SSRK-240A30	30A, 240VAC - AC Input
	7-1393030-1	SSRK-600A30	30A, 600VAC - AC Input
	9-1393030-3	SSRK-240D20	20A, 240VAC - DC Input
	9-1393030-4	SSRK-240D30	30A, 240VAC - DC Input
	6-1393030-8	SSRK-600D30	30A, 600VAC - DC Input

For more part numbers see the [SSRK Series data sheet](#) on [te.com](#)

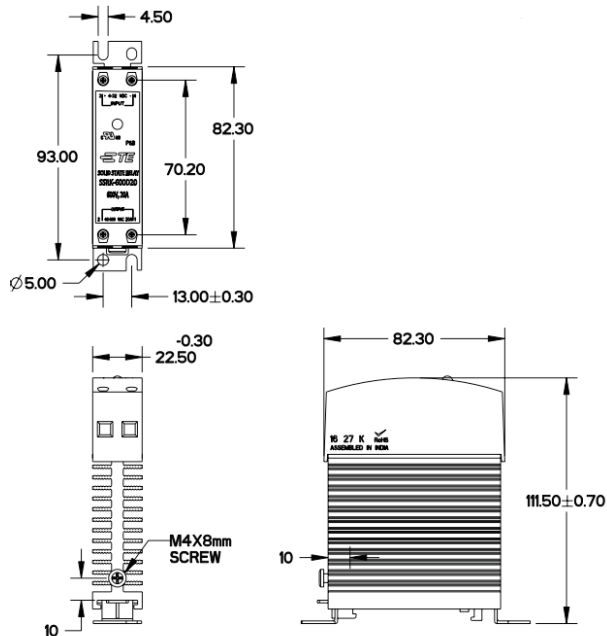
SSRM Series - Solid State Relay, DIN Rail Mount with Paired SCR Output, Integral Heatsink

	Part Number	Part Code	Description
	7-1393030-5	SSRM-600A45	45A, 600VAC - AC Input
	7-1393030-2	SSRM-600D45	45A, 600VAC - DC Input
	7-1393030-4	SSRM-600D65	65A, 600VAC - DC Input

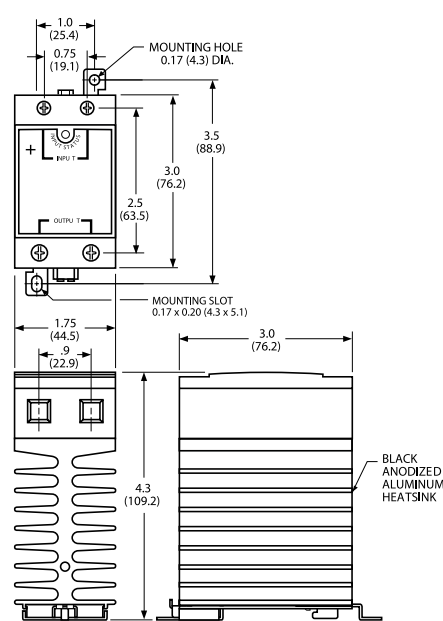
For more part numbers see the [SSRM Series data sheet](#) on [te.com](#)

Dimensions

SSRK Series



SSRM Series



te.com

© 2018 TE Connectivity. All Rights Reserved. Potter & Brumfield, TE, TE Connectivity, and the TE connectivity (logo) are trademarks of the TE Connectivity Ltd. family of companies. Other logos, product and Company names mentioned herein may be trademarks of their respective owners.

While TE has made every reasonable effort to ensure the accuracy of the information in this brochure, TE does not guarantee that it is error-free, nor does TE make any other representation, warranty or guarantee that the information is accurate, correct, reliable or current. TE reserves the right to make any adjustments to the information contained herein at any time without notice. TE expressly disclaims all implied warranties regarding the information contained herein, including, but not limited to, any implied warranties of merchantability or fitness for a particular purpose. The dimensions in this catalog are for reference purposes only and are subject to change without notice. Specifications are subject to change without notice. Consult TE for the latest dimensions and design specifications.

1-1773947-4 JN 03/2018

USA: +1 (800) 522-6752
 Canada: +1 (905) 475-6222
 Mexico: +52 (0) 55-1106-0800
 Latin/S. America: +54 (0) 11-4733-2200
 Germany: +49 (0) 6251-133-1999
 UK: +44 (0) 800-267666
 France: +33 (0) 1-3420-8686
 The Netherlands: +31 (0) 73-6246-999
 China: +86 (0) 400-820-6015