

SparkFun AST-CAN485 I/O Shield (24V)

DEV-14598

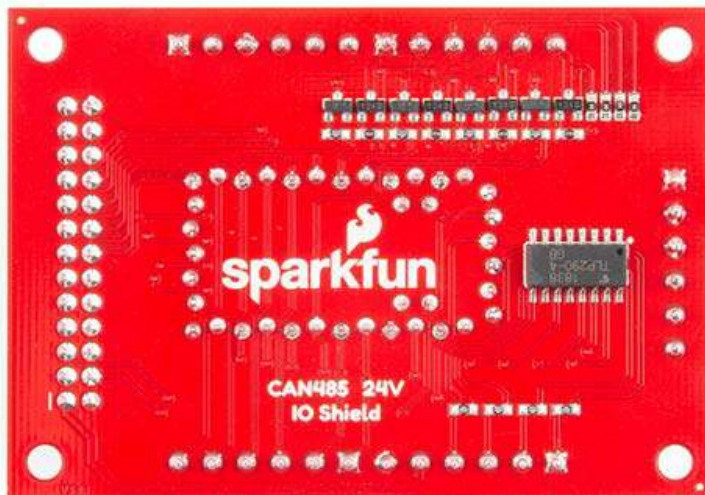
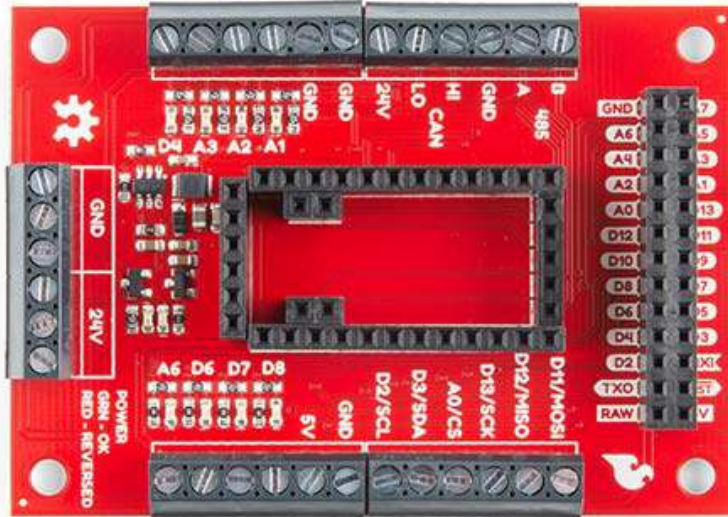
The SparkFun AST-CAN485 I/O Shield allows you to use the [AST-CAN485 Dev Board](#) with 24VDC Inputs and Outputs, a popular voltage level for industrial automation devices as well as 5v devices. By providing screw terminals, the board can easily and safely interface with I/O in a semi-permanent manner which allows for inputs, outputs, or the board itself to be swapped out. With all pins pre-populated with either females pin headers or screw terminals, setup time is minimized.

The AST-CAN485 I/O Shield provides a socket to break out all of the I/O of the AST-CAN485 Dev Board. To make a secure connection to your industrial equipment, screw terminals come pre-soldered to the board to get you up and running in no time. The AST-CAN485 I/O Shield is designed to work in the industrial 24V environment, but has a wide supply input range of 7-24V. The board comes with input reverse voltage protection with a green and red status LEDs (green means power is connected properly, and red indicates reversed power, and blocks power to the rest of the board).

Note: This board has pins that operate at 24V as well as pins that operate at 5V. Care should be taken during wiring as 24V has the potential to do significant damage to 5V circuits.

FEATURES

- Toshiba TLP290-4 Logic Controller
- I/O and Power Pins broken out into both Female Headers and Screw Terminals
- Fully Populated, no soldering necessary
- 7-24VDC Input



<https://www.sparkfun.com/products/14598/3-1-19>