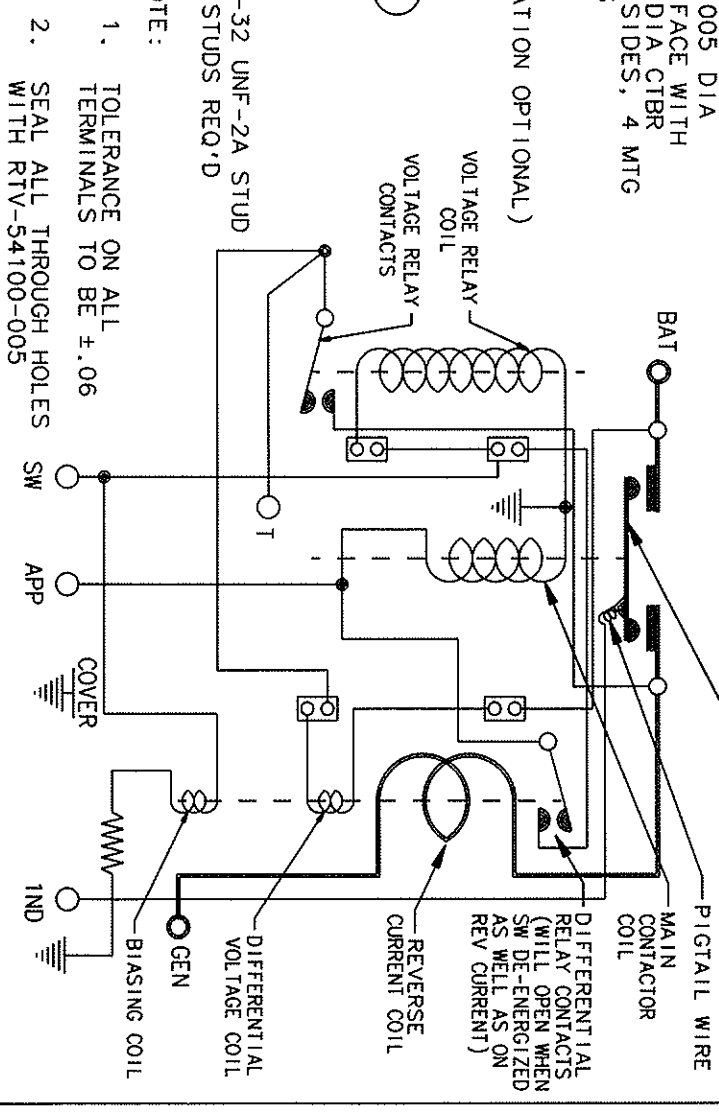
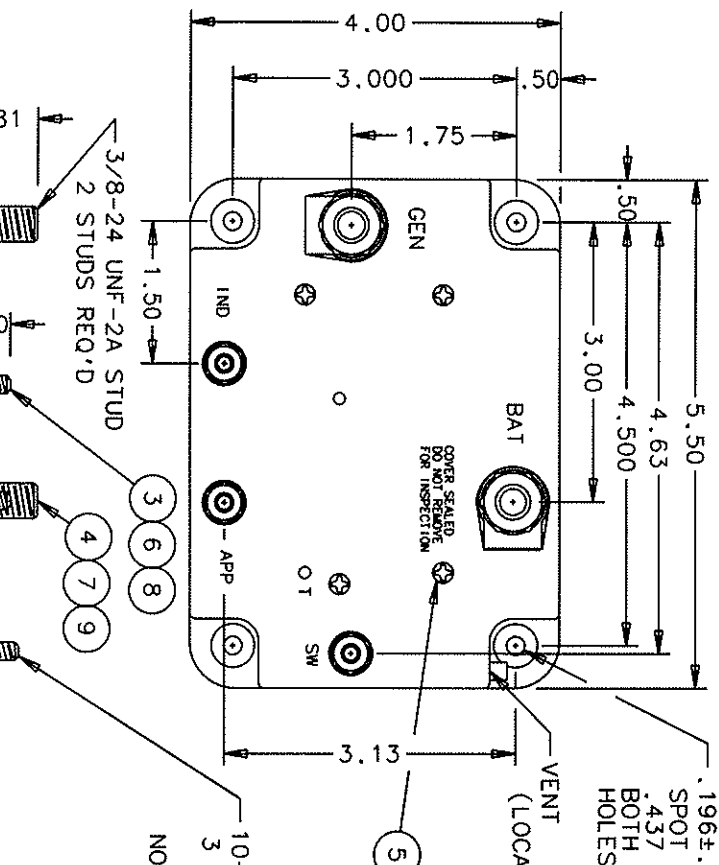
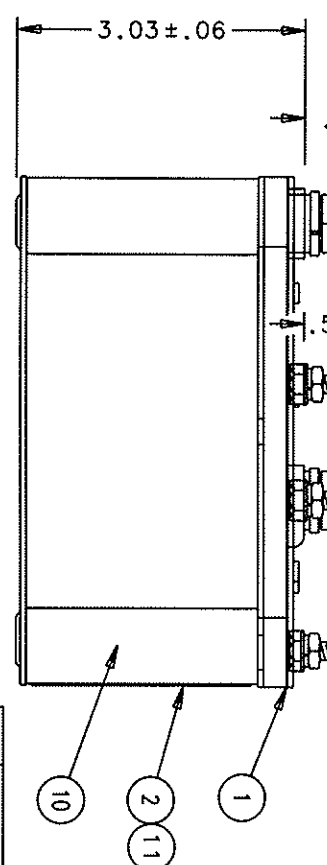


REV.	DESCRIPTION	DATE	APPROVED
H 22814	ITEM 2 WAS 16043-001	93/02/17	WS
J 25173	ADD TOLERANCES	93/03/23	WS
K 31152	FIND NO 11 ADDED	96/10/07	RS
L 42228	FIND NO 10 WAS 33384-010	00/04/17	RS



- NOTE:
1. TOLERANCE ON ALL TERMINALS TO BE ±.06
  2. SEAL ALL THROUGH HOLES WITH RTV-54100-005



FIND NO.	QTY	PART OR IDENTIFYING NO.	DESCRIPTION	FORM NO.	DRAWING OR SPECIFICATION	MATERIAL OR NOTE
11	1	39529-001	OVERLAY			
10	1	33384-040	CUTOUT ASSEMBLY PRIMARY			
9	2	51807-071	WASHER, SPLIT 3/8x.688x.094			AN935-616 STEEL
8	3	51810-031	WASHER, SPLIT No. 10x.337x.047			AN935-10 STEEL
7	2	51704-161	WASHER, FLAT 5/8x.390x.064			AN960-616 STEEL
6	3	51702-851	WASHER, FLAT 7/16x13/64x.032			AN960-10L STEEL
5	4	51200-020	SCREW No. 4x1/4 PAN HD			S.S.
4	2	50407-166	NUT, HEX 3/8-24x5/8x7/32			MS20365-616 BRASS
3	3	50410-086	NUT, HEX 10-32x3/8x1/8			MS20365-10 BRASS
2	1	16043-022	PLATE-NAME			
1	1	07597-000	PLATE COVER-BASE INSULATION			

NOMINAL VOLTAGE		28 VOLTS DC
CURRENT RATING		600 AMP
REVERSE CURRENT SETTINGS		18 - 35 AMP
MAX WEIGHT		3.9 LBS

UNLESS OTHERWISE SPECIFIED DIMENSIONS ARE IN INCHES	
2 PL. DEC. 13 PL. DEC. JANGLES	1.016 ± .005 ± .1*

DR BY	RLS	00/05/01
CHK BY	RS	06/05/01
ENGR	RS	06/05/01
MF G	RS	06/05/01
RELEASE		
CONTR. NO.		
GOVT. APPL.		

HARTMAN ELECTRICAL MANUFACTURING		MAANSFIELD, OHIO
CUTOUT - REVERSE CURRENT		
24 VOLT DC SYSTEM		093
SIZE	CODE IDENT	DWG NO.
C	74063	A-702AAP
SCALE	NONE	SHEET