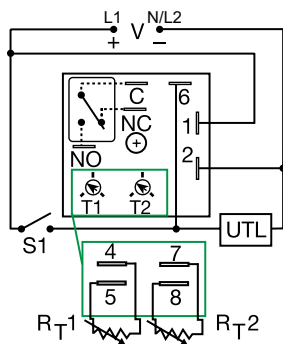


KRPD SERIES

Relay Output Timer



Wiring Diagram



V = Voltage
C = Common, Transfer Contact
NC = Normally Closed
NO = Normally Open
S1 = Initiate Switch
UTL = Untimed Load

A knob is supplied for adjustable units or R_T terminals for external adjust. The untimed load is optional. S1 is not used for some functions.

Description

The KRPD Series is a factory programmed time delay relay available with 1 of 12 standard dual functions. The time delays can be factory fixed, onboard or externally adjustable or a combination of fixed and adjustable. The SPDT output relay contacts offer a full 10A rating with complete isolation. Its microcontroller timing circuit provides excellent repeat accuracy and stability. Encapsulation protects against shock, vibration, and humidity. The KRPD Series is a cost effective approach for OEM applications that require small size, isolation, accuracy and long life.

Features & Benefits

| FEATURES | BENEFITS |
|--|--|
| Microcontroller based | Repeat Accuracy +/- 0.5% |
| Compact design | Allows flexibility for OEM applications |
| Isolated, 10A, SPDT output contacts | Allows control of loads for AC or DC voltages |
| Encapsulated | Encapsulated to protect against shock, vibration, and humidity |

Accessories



P1004-95, P1004-95-X Versa-Pot
Panel mountable, industrial potentiometer recommended for remote time delay adjustment.



P0700-7 Versa-Knob
Designed for 0.25 in. (6.35 mm) shaft of Versa-Pot. Semi-gloss industrial black finish.



P1015-64 (AWG 14/16) Female Quick Connect
These 0.25 in. (6.35 mm) female terminals are constructed with an insulator barrel to provide strain relief.



P1015-18 Quick Connect to Screw Adapter
Screw adapter terminal designed for use with all modules with 0.25 in. (6.35 mm) male quick connect terminals.



C103PM (AL) DIN Rail
35 mm aluminum DIN rail available in a 36 in. (91.4 cm) length.



P1023-20 DIN Rail Adapter
Allows module to be mounted on a 35 mm DIN type rail with two #10 screws.

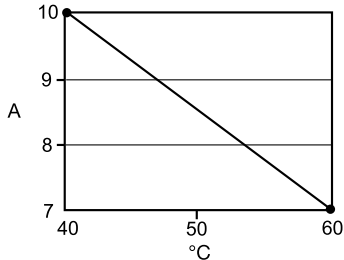
Ordering Information

| MODEL | INPUT | ADJUSTMENT 1 | TIME DELAY 1 | ADJUSTMENT 2 | TIME DELAY 2 | FUNCTION |
|-----------------|-----------------|--------------|--------------|--------------|--------------|------------------------------|
| KRPD215S190SMB | 24VAC | Fixed | 5s | Fixed | 90s | Delay-on-Make/Delay-on-Break |
| KRPD417M113MRXD | 120VAC | Fixed | 7m | Fixed | 13m | Recycling/Off Time First |
| KRPDA175S130SMI | 24 to 240VAC/DC | Fixed | 75s | Fixed | 30s | Delay-on-Make/Interval |
| KRPDA2129RXE | 24 to 240VAC/DC | Onboard | 0.1 - 10s | Onboard | 10 - 1000h | Recycling |
| KRPDD2121MB | 12 to 48VDC | Onboard | 0.1-10s | Onboard | 0.1-10s | Delay-on-Make/Delay-on-Break |

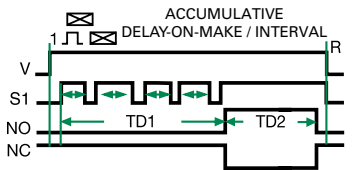
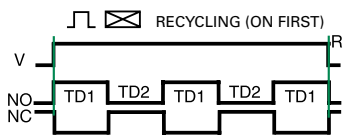
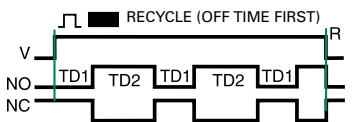
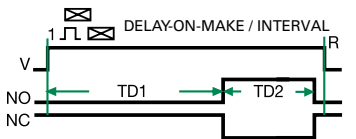
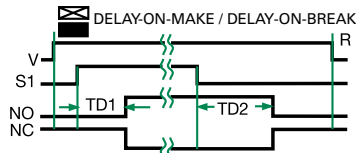
If you don't find the part you need, call us for a custom product 800-843-8848

KRPD SERIES

Output Current/Ambient Temperature



Function Diagrams



V = Voltage
S1 = Initiate Switch
NO = Normally Open Contact
NC = Normally Closed Contact
TD1, TD2 = Time Delay
R = Reset
— = Undefined Time

Specifications

| | |
|--|--|
| Time Delay Type | Microcontroller circuitry |
| Range | 0.1s - 1000h in 9 adjustable ranges or fixed (to 999) |
| Repeat Accuracy | ±0.5% or 20ms, whichever is greater |
| Tolerance (Factory Calibration) | ≤ ±2% |
| Reset Time | ≤ 150ms |
| Initiate Time | ≤ 40ms; 750 operations per minute |
| Time Delay vs. Temperature & Voltage | ≤ ±2% |
| Input Voltage | 12 to 48VDC; 24 to 240VAC/DC |
| Tolerance | -15% - 20% |
| 12 to 48VDC | -20% - 10% |
| 24 to 240VAC/DC | 50/60 Hz / ≤ 10% |
| AC Line Frequency/DC Ripple | AC ≤ 2VA; DC ≤ 2W |
| Power Consumption | |
| Output Type | Isolated relay contacts |
| Form | SPDT |
| Rating (at 40°C) | 10A resistive @ 125VAC 5A resistive @ 230VAC & 28VDC 1/4 hp @ 125VAC 250VAC |
| Max. Switching Voltage | 250VAC |
| Life (Operations) | Mechanical - 1 x 10 ⁷ ; Electrical - 1 x 10 ⁵ |
| Protection Circuitry | Encapsulated |
| Isolation Voltage | ≥ 1500V RMS input to output |
| Insulation Resistance | ≥ 100 MΩ |
| Polarity | DC units are reverse polarity protected |
| Mechanical Mounting | Surface mount with one #10 (M5 x 0.8) screw |
| Dimensions | H 50.8 mm (2"); W 50.8 mm (2"); D 30.7 mm (1.21") |
| Termination | 0.25 in. (6.35 mm) male quick connects |
| Environmental Operating/Storage Temperature | -40° to 60°C / -40° to 85°C |
| Humidity | 95% relative, non-condensing |
| Weight | ≈ 2.6 oz (74 g) |