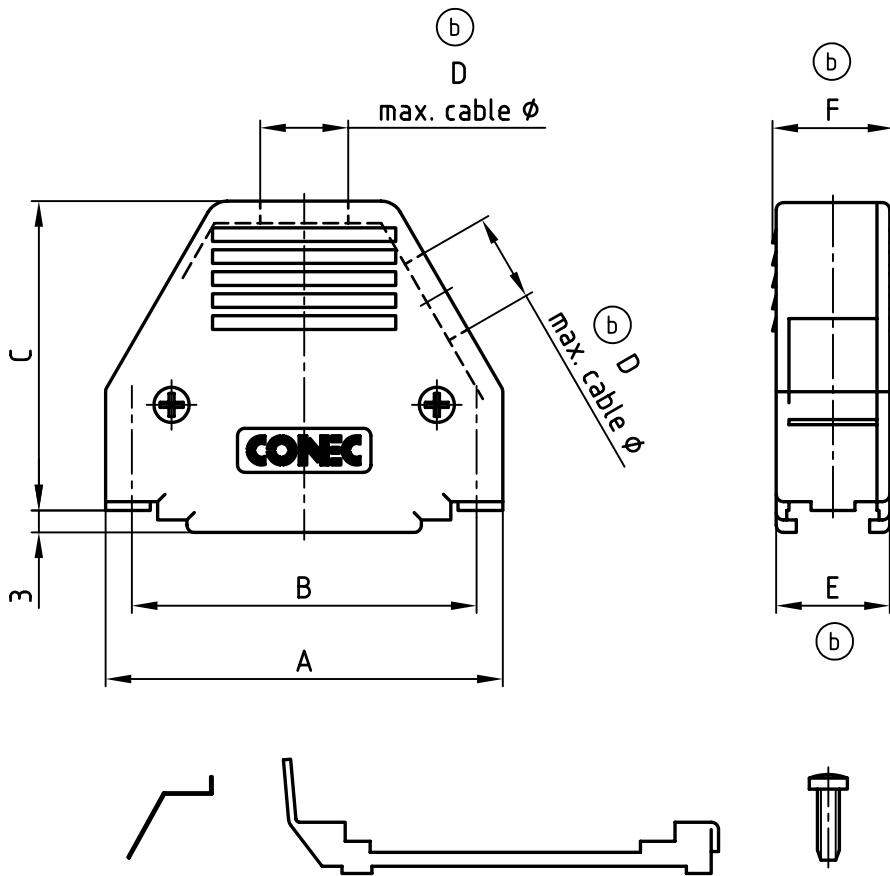


used for: D-SUB



SLIDE LOCK

| POS. | A | B | C | D max. cable ϕ | E | F | Part No: Bulk package |
|------|------|------|------|------------------------|------|------|---------------------------|
| 9 | 32.0 | 25.0 | 36.7 | 6.3 | 15.5 | 16.5 | 165X11279X |
| 15 | 40.0 | 33.3 | 38.2 | 8.0 | 15.5 | 16.5 | 165X11289X |
| 25 | 54.2 | 47.0 | 42.2 | 10.5 | 15.5 | 16.5 | 165X11299X (165X11299X-S) |
| 37 | 70.6 | 63.5 | 47.2 | 11.5 | 15.5 | 16.5 | 165X11309X |
| 50 | 68.2 | 61.1 | 47.2 | 13.7 | 19.6 | 20.6 | 165X16549X |

MATERIAL:
 HOOD: ABS UL 94 V-0; BLACK
 SLIDE LOCK: STEEL; NICKEL PLATED
 SPRING: STEEL; TIN PLATED

THIS DRAWING MAY NOT BE COPIED OR REPRODUCED IN ANY WAY, AND MAY NOT BE PASSED ON TO A THIRD PARTY WITHOUT WRITTEN PERMISSION.
 OWNERSHIP AND COPYRIGHT OF CONEC GmbH
 DO NOT ALTER CAD DRAWING BY HAND

| | | | |
|-----------|-------------|-----------------|------|
| tolerance | | | |
| 2000 | date | name | |
| drawn | 03.07. | A. Mickenbecker | |
| appd. | 03.07. | E. Mickenbecker | |
| norm | | | |
| d-old | | | |
| 6x b | Ä 2620 | 05.12.2006 | ES |
| rev. | description | date | name |



| | | |
|-------------|---|---------|
| scale: | 1:1 | |
| material: | SEE NOTES | |
| title: | PLASTIC HOOD 9-50pos. with top and side cable exit with slide lock | |
| dwg no: | AutoCAD 2000 | DIN-A |
| | 16K1A024A | 4 |
| product no: | SEE TABLE | |
| | | sh: 1/1 |